

TULPEHAKING

nature center

at the Abbott Marshlands



2024 FALL

www.mercercounty.org/parks

FALL PROGRAMS

Register at register.communitypass.net/mercer unless otherwise noted.

Morning Mushroom Walk

Saturday, September 7

@ MERCER MEADOWS

Saturday, October 5

@ MERCER COUNTY PARK

Saturday, November 2

@ TULPEHAKING NATURE CENTER

9-11am

Free

All ages

There are many mighty mushrooms sprouting in Mercer County. These phenomenal fungi are fantastic facets of forest floors filling us with fascination and fabulous feelings. Learn more about mushrooms and more on this guided hike.

[Registration required.](#)



Backyard Birds for Families

Saturday, September 14

2-3:30 pm

TULPEHAKING NATURE CENTER

Free

Families

Do you know the song a chickadee makes? We'll learn the songs of several species of birds commonly found in our backyards. Then we'll head out to see if we can spot our feathered friends in their natural habitat.

[Registration required.](#)



Back 2 School Hike

Saturday, September 7

2-4pm

TULPEHAKING NATURE

CENTER

Free

Families

Join our naturalist for a hike around Roebling Memorial

Park to experience nature and end summer break on a high note.

[Registration required.](#)

Early Bird Walk

Thursday, September 19

@ BALDPATE MOUNTAIN

Thursday, September 26

@ FIDDLERS CREEK

PRESERVE

Thursday, October 3

@ MERCER MEADOWS

Thursday, October 17

@ ROSEDALE PARK

8:30-11 am

Free

Adults and Teens

Bring binoculars or borrow ours.

[Registration required.](#)



Nature Under the Microscope

Saturday, September 14

Saturday, October 12

Saturday, November 9

10:30-noon

TULPEHAKING NATURE CENTER

Free

Families

Explore nature up close, really close! We'll guide you through the use of a microscope to examine our collection of insects, butterfly wings, seeds, plus any natural treasures that you find while we explore outside the nature center.

[Registration required.](#)



Guided Nature Walk

Friday, September 20

@ MERCER MEADOWS, REED BRYAN FARM

Friday, October 18 @ MCP, EAST PICNIC AREA

Friday, November 15

@ MERCER MEADOWS, ROSEDALE LAKE

2-4 pm

Free

All ages

[Registration required.](#)

4th Friday Family Game Night

Friday, September 27

Friday, October 25

Friday, November 22

6–8 pm

TULPEHAKING NATURE CENTER

Free

Families

Visit the Tulpehaking Nature Center for an evening of family fun with board games, bingo, turtle time, and light refreshments!

[Registration required.](#)



Rise & Shine Hike

Saturday, September 28

@ BALDPATE MOUNTAIN, FIDDLERS CREEK ROAD

Saturday, October 26

@ MERCER MEADOWS, POLE FARM

Saturday, November 23

@ TULPEHAKING NATURE CENTER

8–10 am

Free

Adults

[Registration required.](#)

Forest Explorers

Saturday, September 28

2–4 pm

BALDPATE MOUNTAIN, PLEASANT VALLEY RD.

Free

Families

Take a walk in the woods to enjoy the majestic trees, spectacular scenery, and forest habitat while looking for evidence of wildlife, such as tracks, scat, or paths.

[Registration required.](#)

Owls for Kids

Sunday, September 29

1–3 pm

MERCER COUNTY

WILDLIFE CENTER

Free

Families

Join a naturalist and a wildlife rehabilitator at the Mercer County Wildlife Center's Outdoor Education Environment! You'll learn what adaptations make an owl such an awesome predator of the night. You will also meet the wildlife ambassador owls and have fun with owl activities.

[Registration required.](#)



Leave the Leaves:

Walk and Talk

Saturday, October 5

2–4 pm

TULPEHAKING NATURE CENTER

Free

Adults and Teens, 16 and older

As some folks may notice, there are not as many birds or bugs around as there had been in decades past. Join us for a hike and discussion on some of the contributing factors to their decline and simple ways we can change to help these keystone creatures.

[Registration required.](#)

Meadow Restoration Walk

Sunday, October 6

2–4 pm

MERCER MEADOWS, REED BRYAN FARM

Free

Adults and Teens, 16-year & up.

Join the Mercer Chapter of the Native Plant Society of NJ for a Fall walk focused on meadow plants.

We'll enjoy the plants in the fullness of their season and discuss meadow maintenance including periodic burns. This walk occurs on flat terrain.

Bring your binoculars or borrow ours.

Registration required at <https://npsnj.org/chapters/mercer/>. Registration opens September 3rd.



Free Fishing Day!

Saturday, October 19

All Day

ROSEDALE PARK

Free

All ages

Join us from anywhere in

Mercer County for a Virtual Fishing Derby by registering online and sharing your catches to our Instagram using #MCVirtualFishDerby. Fishing poles and fishing assistance will be provided on a limited basis at Rosedale Park from 9am–noon. No freshwater license is required on this day.

[Registration required.](#)

Spectacular Spiders

Saturday, October 19

10–11:30 am

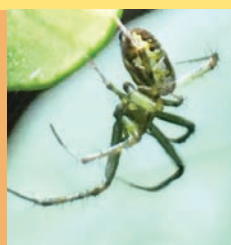
CAPITAL CITY FARM

Free

Families

Turn your spider “eeews” into “aaahs” during this family-oriented program. Our Naturalist will lead you through arachnid activities for all ages that will debunk the many spider myths and increase your appreciation for these tiny creatures.

[Registration required.](#)



Leaf Peeping and Tree ID

Saturday, October 19

2-4 pm

BALDPATE MOUNTAIN

Free

Adults and Teens, 16 and older

The fall foliage is in popping and there's no time to waste! Join us at Baldpate Mountain to learn how to identify these gorgeous plants as well as get some great photos from the mountainside.

[Registration required.](#)



Woolly Worm Weather Forecasting

Saturday, November 9

2-3:30 pm

HOWELL LIVING HISTORY FARM

Free

Families

According to colonial American Folklore, the width of a woolly bear caterpillar's brown stripe forecast winter weather. During this walk, we will replicate Dr. Curran's infamous woolly worm research and predict the weather for the upcoming winter season.

[Registration required.](#)

Winter Waterfowl Walk

Saturday, October 26

Saturday, November 23

2-4 pm

**ROEBLING PARK,
SPRING LAKE**

Free

All ages

Bring your binoculars or borrow ours.

[Registration required.](#)



Woodpecker Walk

Saturday, November 2

2-4 pm

ROSEDALE PARK

All ages

Bring your binoculars or borrow ours.

[Registration required.](#)



Meet our Animal Ambassadors

Saturday, November 9

2-3 pm

TULPEHAKING NATURE CENTER

Free

All ages

Stop by the Tulpehaking Nature Center to learn about how our local wildlife need our help to maintain their habitats. You will meet our live animal ambassadors and get a closer look at them while learning about their adaptations.

No registration required.



Raptor Watch

Thursday, November 7

Noon-4:30 pm

MERCER MEADOWS, REED BRYAN FARM

Free

All ages.

Join us as we search the skies for these awesome fliers on their journey south. Binoculars will be available for loan.

No registration required

Outdoor Skills: Making Rope From Flowers

Saturday, November 16

10-noon

MERCER MEADOWS, POLE FARM

Free

Adults and Teens, 16 and older

Dogbane and Milkweed have been used for hundreds if not thousands of years to make rope using the fibers from dead stems. Join our naturalist to learn this previously prominent skill.

[Registration required.](#)



Animal Tracking

Saturday, November 16
2-4 pm

TULPEHAKING NATURE CENTER
Free
All ages

Identifying animals by their tracks and recognizing game trails can be a daunting task when you are first learning the skill. Join us in an animal tracks hike where we will investigate the forest and marsh to learn how to identify animals by their tracks and spot their ideal pathways.

[Registration required.](#)



Thanksgiving for Birds

Saturday, November 23
Noon-1:30 pm

TULPEHAKING NATURE CENTER
Free
All ages

Let's give an offer of gratitude to our feathered

friends who bring us such joy all year long. After making a simple bird feeder, we'll walk the trails of Roebeling Park to find the best place to hang our Thanksgiving gift.

Drop In.



Baldpate Summit Hike

Saturday, November 30
10-noon

BALDPATE MOUNTAIN
Free
All ages

Enjoy this phenomenal rocky trail, learning about native plants and animals all while getting your steps in.

[Registration required.](#)

In the Footsteps of the Lenape

Saturday, November 30
2-4 pm

TULPEHAKING NATURE CENTER
Free
All ages

Learn about the Lenape, their culture, and the ways in which they used artistic expression. Then, learn about and create land art inspired by the Lenape in the Watson Woods.

[Registration required.](#)



It's a Birthday for the Nature Center!

Saturday, October 12
Noon-4 pm

TULPEHAKING NATURE CENTER
Free; All ages

The Tulpehaking Nature Center is 10 years old! We're celebrating with drop-in family activities all afternoon. Go on a treasure hunt, explore with microscopes, and join us for cake & ice cream and help us sing Happy Birthday!



Family Sundays at the Nature Center

1:30-2:30 pm

TULPEHAKING NATURE CENTER
Free; All ages
No registration required.



Kids in the Garden

Sunday, October 6

Sunday, November 3

Is your child a budding gardener? Bring your family to help us keep our native plant garden beds in tip top shape with planting, mulching, weeding, and watering.

Feed the Animals

Sunday, October 13

Sunday, November 10

It's lunchtime for our education animals! See what it takes to keep them healthy, clean, and fed. We might even enlist some willing hands to help. Will you be our animal caretaker for a day?

Exploration Station

Sunday, October 20

Sunday, November 17

Unearth your inner naturalist! Each month we'll have a new guided nature activity featuring our one-of-a-kind animal artifacts for you to explore.

Leaf Art

Sunday, October 27

Sunday, November 24

We'll explore the grounds of the nature center for some of the season's bountiful leaves and use them to create beautiful art.

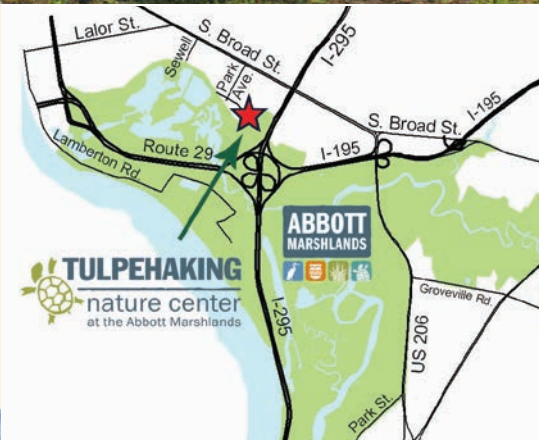
TULPEHAKING NATURE CENTER



**157 Westcott Avenue
Hamilton, NJ 08610
(609) 888-3218**

**Open to the Public:
Wednesday – Saturday:
10 am – 4 pm
Sunday: 1–4 pm**

**Tulpehaking Nature Center is located
2 miles south of downtown Trenton,
NJ, off of Route 206 (S. Broad Street).**



**FOR MORE PROGRAMMING, visit
Friends for the Abbott Marshlands
abbottmarshlands.org/events/list/**



Registration Information

Registration & payment for all Mercer County Park Commission public programs are taken online at register.communitypass.net/mercer. For assistance with registration, please contact natureprograms@mercercounty.org or call (609) 888-3218, option 2.

Park Commission Nature Programs

Tulpehaking Nature Center is owned by Mercer County and is the headquarters of the Mercer County Park Commission's Department of Environmental Education.

We are passionate about providing high quality engaging experiences in the outdoors for everyone regardless of age, ability, or background. Our programs take an explorative approach to learning about the natural world as we showcase the incredible natural history of Mercer County.

