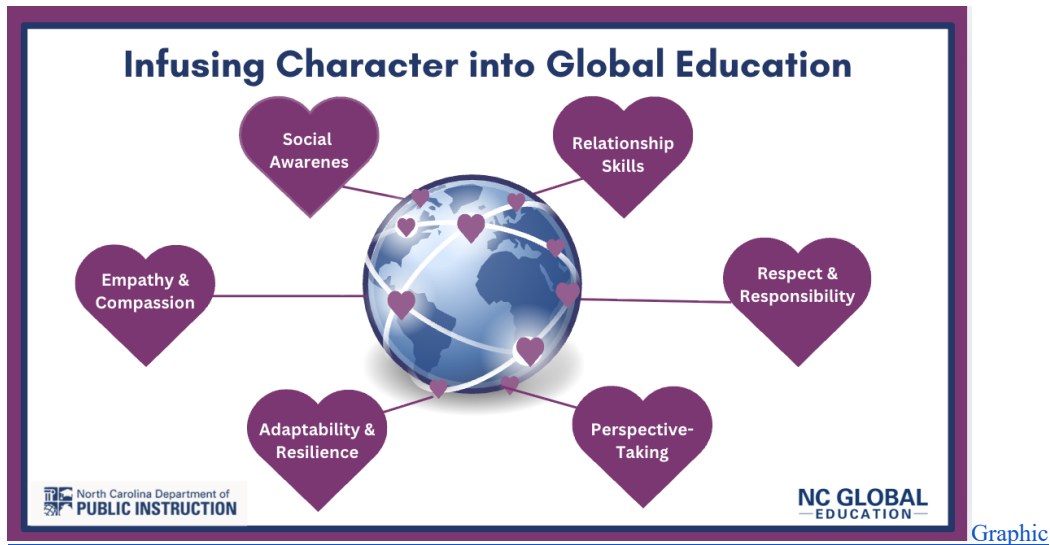


# Infusing Global Education and Character Education



## Introduction

In an increasingly interconnected world, our students need both knowledge and character to succeed. Global Education provides them with tools to understand different perspectives around the world, while Character Education ensures that they have the values to act responsibly within it. Together, these approaches prepare students for college, careers, and life in an interconnected society.

This document aims to provide educators with practical ways to incorporate global perspectives into their teaching, highlighting the benefits and potential outcomes for students, and illustrating how these efforts align with Character Education.

## Infusing Global Education & Character Education

**Global and Character Education are deeply connected through:**

- **Empathy:** Studying global issues fosters compassion and understanding.
- **Social Awareness:** Recognizing multiple perspectives helps students build communities where everyone belongs.
- **Relationship Skills:** Global projects encourage collaboration and teamwork.
- **Responsible Decision-Making:** Applying global knowledge prepares students to make ethical choices with local and worldwide impact.



# Infusing Global Education and Character Education

## Student Outcomes

Students who engage with Global Education can achieve significant outcomes, including:

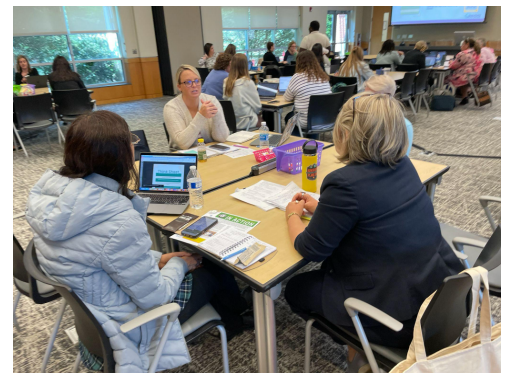


1. **Broadened Perspectives:** Learning about different cultures, countries, and global issues helps students develop a more comprehensive worldview.
2. **Empathy and Compassion:** Exposure to various experiences and challenges fosters empathy and a sense of global responsibility.
3. **Improved Communication Skills:** Interacting with people from different backgrounds enhances students' communication and collaboration skills.
4. **Adaptability and Resilience:** Understanding and navigating global contexts prepares students to be adaptable and resilient in an ever-changing world.
5. **Academic and Career Readiness:** Global competencies are increasingly valued in higher education and the workforce, giving students a competitive edge.

## The Institute on Global Perspectives

The Institute on Global Perspectives provides educators with the opportunity to deeply engage with world issues, various perspectives, and strategies for classroom integration. It is designed to strengthen both global and character education by:

- Highlighting how global challenges connect to local communities and classroom learning.
- Helping educators design instruction that encourages students to analyze issues, consider multiple perspectives, and practice empathy.
- Offering pathways for teachers to connect their learning to initiatives such as the Global Educator Digital Badge, the Global Ready Schools/District designations, and the Portrait of a Graduate.
- Reinforcing the importance of character education by linking global awareness to responsibility, empathy, integrity, and ethical decision-making.



The Institute builds educator capacity, ensuring that students experience learning that is both globally informed

# Infusing Global Education and Character Education

and rooted in strong character values.



For more resources and information about Global Education, please visit:

- [North Carolina Department of Public Instruction's Global Education program page](#)

## Connecting Social Studies and Global Education to Portrait of a Graduate

[Link to View the Infographic](#)

