

REMOTE CHARTER ACADEMIES

Presented NCAPCS Conference July 17, 2025

Mr. Bruce Friend

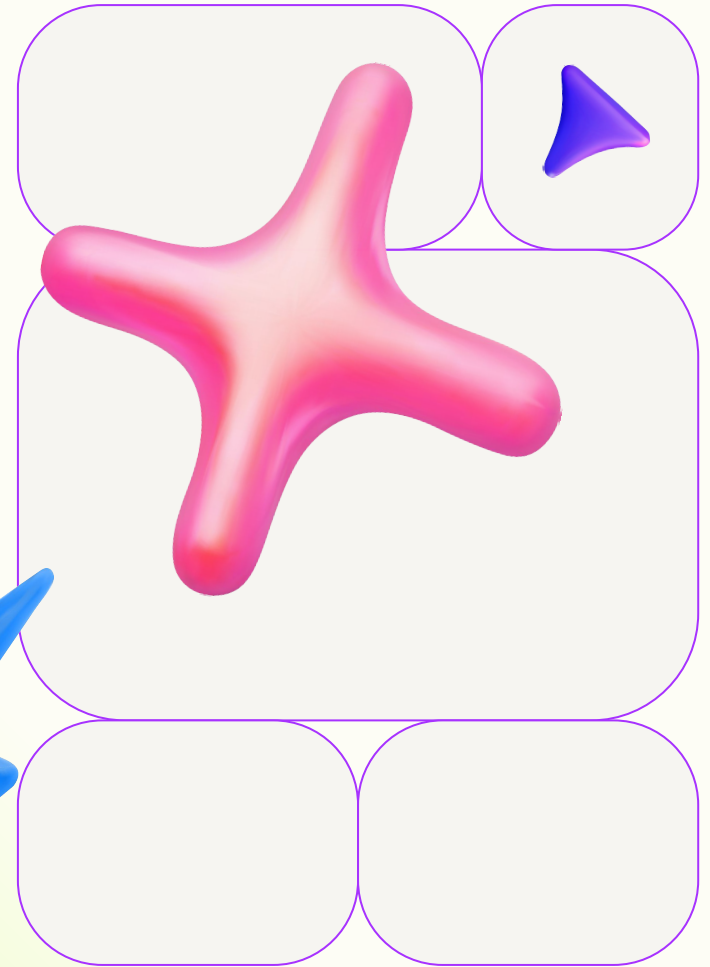
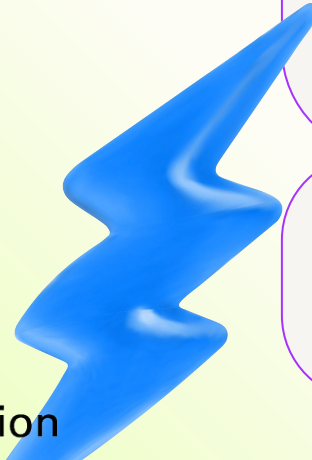
Superintendent - Pine Springs Preparatory Academy

[Ms. Ashley Baquero](#)

Executive Director - NC Office of Charter Schools



Office of
CHARTER SCHOOLS
NC Department of Public Instruction





REMOTE CHARTER BASICS

- **New schools** apply through the new charter school application process. The 2025 application currently open contains a remote academy section. Requires application, fee, and interview process, as well as Ready to Open.
- **Existing schools** apply through the *amendment* process; essentially, adding a remote charter academy (“RCA”) to the existing charter.

SESSION 2023 – HB 259

- Three types to choose from - must specify during application process.
- (A) As part of an **application or modification** of a charter, a nonprofit may apply to the Review Board for approval to include a remote charter academy that meets the requirements of this Part as part of the nonprofit's charter.
 - (1) Provide **only remote instruction** to enrolled students served by the charter...
 - (2) Provide **remote instruction** to students enrolled in the remote charter academy **and provide in-person instruction** to **other** students served by the charter.
 - (3) Provide enrolled students **both remote instruction and in-person instruction**. A student who receives more than half of the student's instruction through remote instruction shall be classified as enrolled in the charter's remote charter academy.



ENROLLMENT AREAS 115C-218.120(b)

As part of the application/amendment, the BOD shall designate either:



1. Statewide enrollment



2. Regional enrollment

Admits students only from the county in which the charter school facility is located and the counties of NC contiguous to that county.

INSTRUCTION 115C-218.120(c)

- (C) A remote charter academy (RCA) provides instruction **primarily online** through a combination of synchronous and asynchronous instruction delivered outside the school facility and **may include any combination of grade levels**.

HOURS 115C-218.120(d)

- (D) An approved RCA may satisfy the minimum required number of instructional days or hours through remote instruction.
 - 185 days or 1025 hours is the statewide charter requirement.



ENROLLMENT

115C-218.120(d)

(A)

A student shall not be assigned to attend an RCA without parental consent.

(B)

A RCA shall identify characteristics for successful remote learning and establish criteria for admittance that is available to parents.

(C)

A student may not be denied admission... on the basis that the student is a child with a disability... that student's IEP team... must plan for a successful student entry and accommodations necessary.

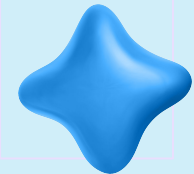
(D)

A charter that provides in-person instruction may reassign a student... if the BOD – or Chief Administrator if delegated - determines that in-person instruction would better ensure academic success for that student.



REQUIREMENTS 115C-218.122

- Except as provided in this part, a RCA shall meet the same requirements established by Article 14A.
 - *All admissions requirements found in Article 14A would apply such as nondiscrimination, open lottery, and 30 day open enrollment.*



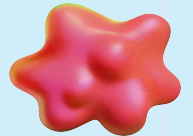
REQUIREMENTS 115C-218.122 (b)

- A RCA shall provide all of the following to students:
 - (1) Any **hardware and software** needed to participate in the RCA. Students may not be charged rental fees but may be charged damage fees under rules adopted by the SBE.
 - (2) Access to a **learning management platform** that enables monitoring of student performance and school-owned devices, as well as video conferencing and supervised text-based chat for synchronous communication.
 - (3) **Access to the internet** that is available during instructional hours, evenings, and weekends.
 - (4) **Technical support** that is available during instructional hours.
 - (5) For Children with an IEP or 504 plan, **adaptive or assistive devices...** as required by that program or plan.



REQUIREMENTS 115C-218.122 (c)-(d)

- (C) A RCA may require students to attend in person to **fulfill State-mandated student assessments**. A RCA may conduct optional in-person meetings between students, parents, and instructors at a charter school facility.
- (D) The employees of a RCA shall meet the same licensure and evaluation requirements as required by G.S. 115C-218.90 and shall ensure sufficient... support staff including **at a minimum**:
 - (1) An instructional Technology Facilitator
 - (2) A School Library Media Coordinator
 - (3) A Data Manager
 - (4) Sufficient Remote technicians to ensure technical support throughout the instructional day.



APPROVAL PROCESS 115C-218.123

- A non-profit shall submit to CSRB a plan (whether new or operating/amendment) that provides for the following:

(1) Whether the enrollment area of the RCA will be statewide or regional.

(2) The range of grades for which the RCA will offer courses.

(3) The method by which the RCA will monitor compliance: calendar, enrollment, daily attendance, course credit accrual, progress toward graduation, and course completion.

(4) Hardware, software, and learning management platforms that support online learning.

(5) The measures used to ensure that both synchronous and asynchronous work... support mastery of student achievement goals.

(6) The professional development that will be provided to those teaching related to the pedagogy of remote instruction.

(7) The identified characteristics for successful remote learning and criteria for admission to the RCA. The BOD will identify how this is communicated to parents/the public.

(8) **Any school nutrition services** or transportation services that will be provided to students.

APPROVAL PROCESS 115C-218.123(b)

- (B) The Review Board shall review and approve a charter or charter modification that meets the requirements established in this Part **for a term of five years**... The Review Board shall approve a minimum of two statewide remote charter academies that meet the qualifications of this Part for operation beginning with the 2026-2027 school year and thereafter.



OPERATION AND RENEWAL 115C-218.124



(A)

Each approved RCA shall adhere to the plan submitted to and approved by the Review Board or the SBE unless the BOD obtains a charter modification.



(B)

Each approved RCA shall receive a school code... If a school has a code for both in-person and remote charter academy, they shall provide all financial reporting for both on a joint form directed by DPI.



(C)

A nonprofit may apply for renewal of the RCA for additional terms of 5 years. The Review Board shall consider compliance with the requirements of this Part and success of the RCA in determining whether to approve a renewal request.

EVALUATION 115C-218.125

- The SBE shall evaluate the success of RCA's approved under this Part... Success shall be measured by school performance scores/grades, retention rates, attendance rates, and, for grades 9-12, high school completion and dropout rates.
- The Board shall report by Nov. 15th of each year to the Joint Legislative Education Oversight Committee on the evaluation of these academies and on any recommended statutory changes.





SL 2014-100 IMPLICATIONS

- The two statewide virtual charter schools pilot ends with the 2025-2026 school year.
 - NC Cyber
 - NC Virtual
- **Shall be eligible to apply for a charter renewal as a RCA.**

APPLICATION PROCESS

Application TENTATIVE Timeline

Application window open in October 2025

Deadline: January 2026

CSRB Approval Required: Interview Process



Amendment process for currently operating schools

1

Application

2

Remote Instruction
Plan

3

Budget

4

Board meeting
minutes that reflect
approval

5

Cover letter signed by school leader and
board chair

OPERATIONS AND RENEWAL



School Code

- Will be a separate code under your school number

Accountability

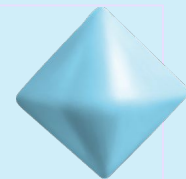
- RCAs will receive a separate SPG
- Will get an "I" until meet min requirements for testing numbers
- Will need a testing coordinator assigned to both schools (brick and mortar/RCA) although can be same person.

Renewal

- 5 year term

ADMISSIONS

- **Admission criteria:** Align with the legislative requirements of running a RCA. For example, may not deny admission solely on basis of disability/IEP.
- **Dismissal:** Clear process/policy in place for when this will take place and how that will impact students on the waiting list at the in person campus (if applicable).
- **Communication:** Ensure transparency to families enrolling students in the RCA.
- **Admissions policy:** Must have a separate RCA admissions policy OR a section in your current admissions policy clearly addressing the RCA policies. Approved schools receive guidance from OCS pertaining to this.



FAQs



Just to clarify, if we were to request soon, this would be for the 2026-2027 school year for start up?

Application period scheduled to open in Fall 2025, with January 2026 deadline for the 26-27 school year.



If you have enrollment caps in your original charter does the RCA have to follow those caps or will RCA have a separate enrollment cap?

You will project enrollment for a 5 year period solely for your RCA.



Can you bring in your remote students for EOC/EOG?

Yes, you can require. The requirement must be communicated to families as part of the remote academy enrollment.

Lessons Learned in opening a Remote Charter Academy ...

