

OCTOBER IS: LEARNING DISABILITY AND DYSLEXIA AWARENESS MONTH



NC DPI'S SLD PAGE

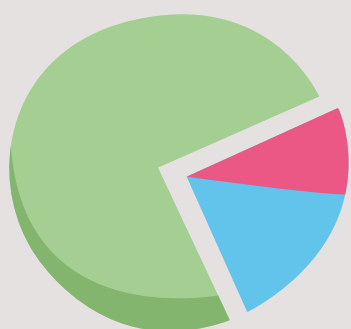
North Carolina's updated SLD Policy 2020, fact sheets, and several webinars can be found:

<https://ec.ncpublicschools.gov/disability-resources/specific-learning-disabilities/sld-policy-addendum-and-resources>

NC INTERNATIONAL DYSLEXIA ASSOCIATION

A Virtual Dyslexia Dash with prizes, coffee talks, and other resources are on their Dyslexia Awareness Calendar!

<https://nc.dyslexiaida.org/wp-content/uploads/sites/41/2020/09/Dyslexia-Awareness-Calendar-2020.pdf>



DID YOU KNOW?

2018-19 school year data reported that of all students identified under one of the fourteen areas of EC eligibility, 39.71% of these were identified with Learning Disability as the primary disability. Specific Learning Disability represents the largest disability population in North Carolina.

DYSLEXIA DELEGATES

Six new delegates will join the current team of 75 throughout NC to continue educating and providing facts regarding dyslexia. Stay tuned to the NCSIP calendar as dates for *Deep Dive Into Dyslexia* will be added soon! <https://www.ncsip.org/events>



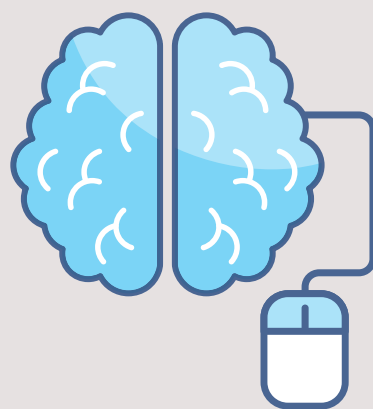
STORIES FROM THE SOURCE

Read, learn, and find inspiration from the challenges, successes, disappointments and achievements of individuals who live with, and work to remove, the stigma of LD as a barrier.

<https://www.nclid.org/ldvoices>

PD OPPORTUNITIES

- *Demystifying Dyslexia*
<https://ncees.homebase.ncpublicschools.gov/ia/em-pari/learning2/course/viewCourseSearch?courseId=16622>
- *Implementing the Instructional Model for Identification & Evaluation for Specific Learning Disabilities* will be available soon!
- These courses are available for certified NC public school employees with access to NCEES.



Exceptional Children Division
North Carolina Department of Public Instruction
6356 Mail Service Center Road
Raleigh, NC 27699-6356