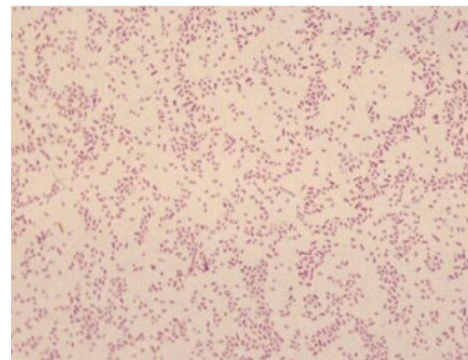


Brucellosis-causing *Brucella* spp. (BBS) Summary of Significant Changes:

1. Recent taxonomic changes to the *Brucella* spp. have added non-pathogenic, environmental bacteria to the traditional highly pathogenic, intracellular bacterial species known to cause Brucellosis (e.g., *B. melitensis*, *B. canis*, *B. suis*, and *B. abortus*).
2. Sentinel laboratories are now expected to perform rule-out testing for Brucellosis-causing *Brucella* spp., formerly categorized as select agent *Brucella* spp., to differentiate them from non-Brucellosis-causing *Brucella* spp. A new [BBS Rule-Out Flowchart](#) and [Differentiation of BBS from Other urea-positive gram-negative coccobacilli Table](#) is provided in the Sentinel Guidelines.
3. Recognition of the Gram-variable staining possibility of *Brucella* spp. instead of the previously reported gram-negative staining characteristic.
4. Additional specifications have been added to the specimen collection information.
5. *Brucella* spp. was removed as a select agent in December 2024. Guidance has been provided on biosecurity and other public health requirements for rule-out BBS cases.
6. The case definition for brucellosis has been updated to align with the 2025 Council of State and Territorial Epidemiologists (CSTE) Case Definition.

Reminder: Although the deregulation of a select agent changes the **biosecurity requirements** (e.g., documentation, required forms, destruction), it does NOT change the **biosafety precautions** necessary for laboratory personnel safety. BBS is a highly infectious, reportable disease. Potential isolates should undergo rule-out procedures in the sentinel lab using a minimum of BSL-2 facilities with BSL-3 practices and be referred to the MTL SB, your LRN Reference Laboratory, for definitive identification if unable to rule out BBS.



BBS colony morphology on BAP, 48 h incubation, and culture gram stain.