

Hennepin Ave S Reconstruction Project

(W Lake St. to 26th St)

Construction & Traffic Impact Update

June 15- 21, 2025



Page 1



WHAT'S HAPPENING

Lake St to 26th St

- Hennepin Ave is open to traffic.
- Buses have returned to Hennepin
- There will be misc. work in the area during the spring months
- Misc. punchlist work will continue



WHAT TO EXPECT

Lake St to 26th St

- Roadway and utility punchlist work and final landscaping will occur in the spring months. This will require periodic short term closures of the bus/parking lane during the day.
- Cross streets will at times be reduced to 1-lane.
- Parking lanes will be closed at certain locations on side streets.
- Business access will remain open during the construction.
- Pedestrian detours will be set up as needed. Greater impacts can be expected at intersections where work is occurring.



STAY CONNECTED

Visit the project website

Sign up for project updates on the project website.

[Minneapolismn.gov/government/projects/hennepin-ave-s/](https://minneapolismn.gov/government/projects/hennepin-ave-s/)



CONTACT US

Adam Hayow, Project Engineer - Public Works

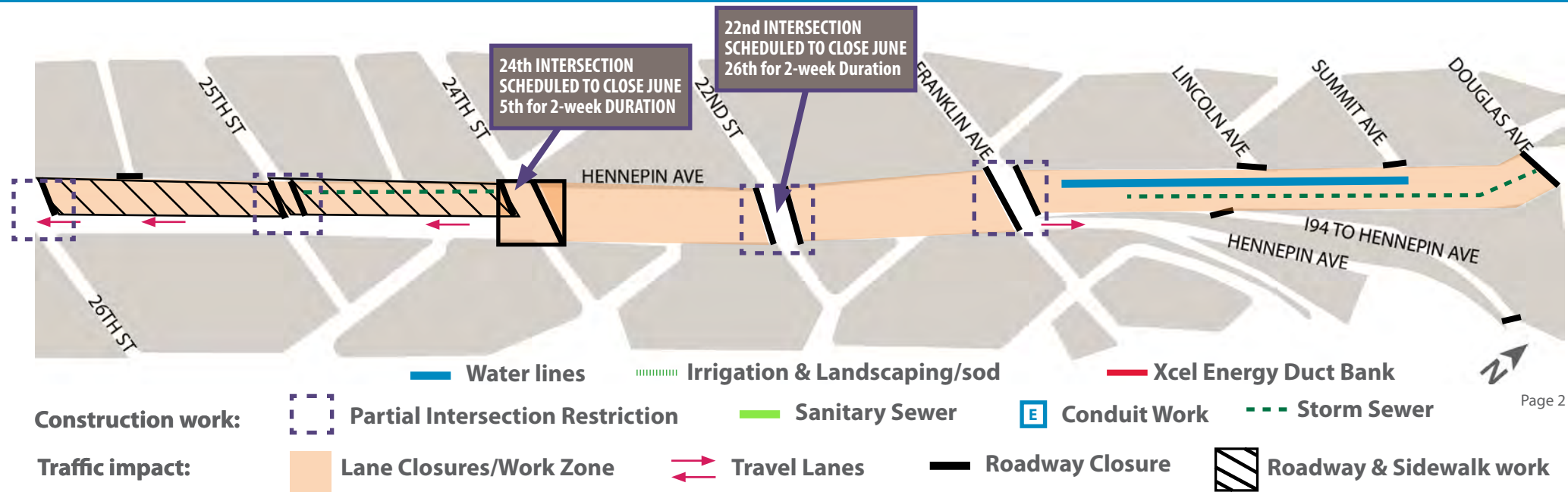
📞 612-673-2172 📧 adam.hayow@minneapolismn.gov

Hennepin Ave S Reconstruction Project

(W 26th St. to Douglas Ave)

Construction & Traffic Impact Update

June 15- 21, 2025



Page 2



WHAT'S HAPPENING

26th St to Douglas Ave

- Roadway construction has begun. This work includes removals, sawcutting, grading, storm sewer work and water service replacement
- Hennepin is closed from Douglas to 24th-Work is being done to replace hydrants, water services, storm sewer and sanitary sewer structure reconstructs.
- Roadway work consisting of grading, placing gravel, pouring concrete curbs and asphalt paving is taking place from 24th to 26th



WHAT TO EXPECT

26th St to Douglas Ave

- Roadway & Utility work using heavy equipment will increase noise, vibration, and dust in work areas and sidewalks.
- Cross streets will at times be reduced to 1-lane or closed to traffic.
- Parking lanes will be closed at certain locations on side locations.
- Business access will remain open during the construction.
- Pedestrian detours will be set up as needed. Greater impacts can be expected at intersections where work is occurring.
- Traffic Delays in the area, closures, and detours.



STAY CONNECTED

Visit the project website

Sign up for project updates on the project website.

[Minneapolismn.gov/government/projects/hennepin-ave-s/](https://minneapolismn.gov/government/projects/hennepin-ave-s/)



CONTACT US

Adam Hayow, Project Engineer - Public Works

612-673-2172 | adam.hayow@minneapolismn.gov

Hennepin Ave S Reconstruction Project

(W Lake St. to Douglas Ave.)

Block-by-Block Work Summary

June 15- 21, 2025

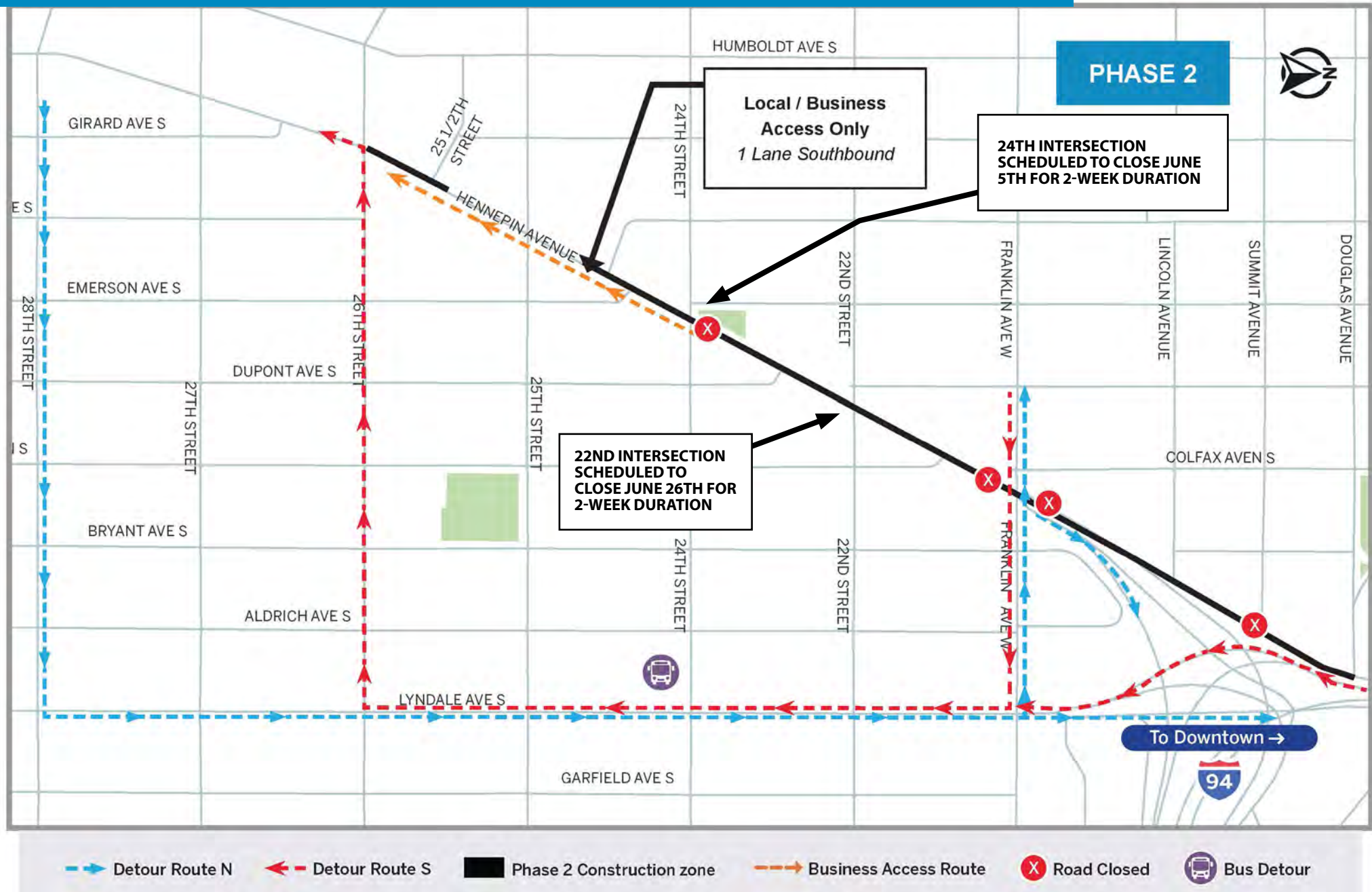


STREET BLOCK	PROJECT RELATED WORK	ANTICIPATED ROAD/PEDESTRIAN RESTRICTIONS				
		TEMPORARY PED RAMPS	PARKING RESTRICTIONS	TWO LANES OPEN (5-9 AM + 3-7 PM)	ONE LANE OPEN	NOTES
Lake St. Intersection						
Lake St. - Lagoon Ave	Punchlist					
Lagoon Ave Intersection						
Lagoon Ave -29th St.	Punchlist					
29th St. Intersection						
29th St. - 28th St.	Punchlist					
28th St. Intersection						
28th St. - 27th St.	Punchlist					
27th St. Intersection						
27th St - 26th St.	Punchlist					
26th St. Intersection						
26th St. -25th St.	Concrete Curb and Asphalt Paving	X	X		X	Single Business access lane south bound
25th St. Intersection		X	X			
25th St - 24th St.	Concrete Curb and Asphalt Paving	X	X		X	Single Business access lane south bound
24th St. Intersection	Concrete Curb and Asphalt Paving	X	X			CLOSED
24th St. - 22nd St.			X		X	Closed
22nd St. Intersection		X	X			
22nd St. - Franklin Ave.			X			Closed
Franklin Ave. Intersection			X			
Franklin Ave -Lincoln Ave.	Watermain offset and Storm Sewer		X			Closed
Lincoln Ave. Intersection	Watermain offset and Storm Sewer	X	X			Closed
Lincoln Ave. - Summit Ave.	Watermain offset and Storm Sewer		X			Closed
Summit Ave. Intersection	Watermain offset and Storm Sewer	X	X			Closed
Summit Ave. - Douglas Ave.	Watermain offset and Storm Sewer		X			Closed

Hennepin Ave S Reconstruction Project

(W Lake St. to Douglas Ave.)

Detour Routes
June 15- 21, 2025

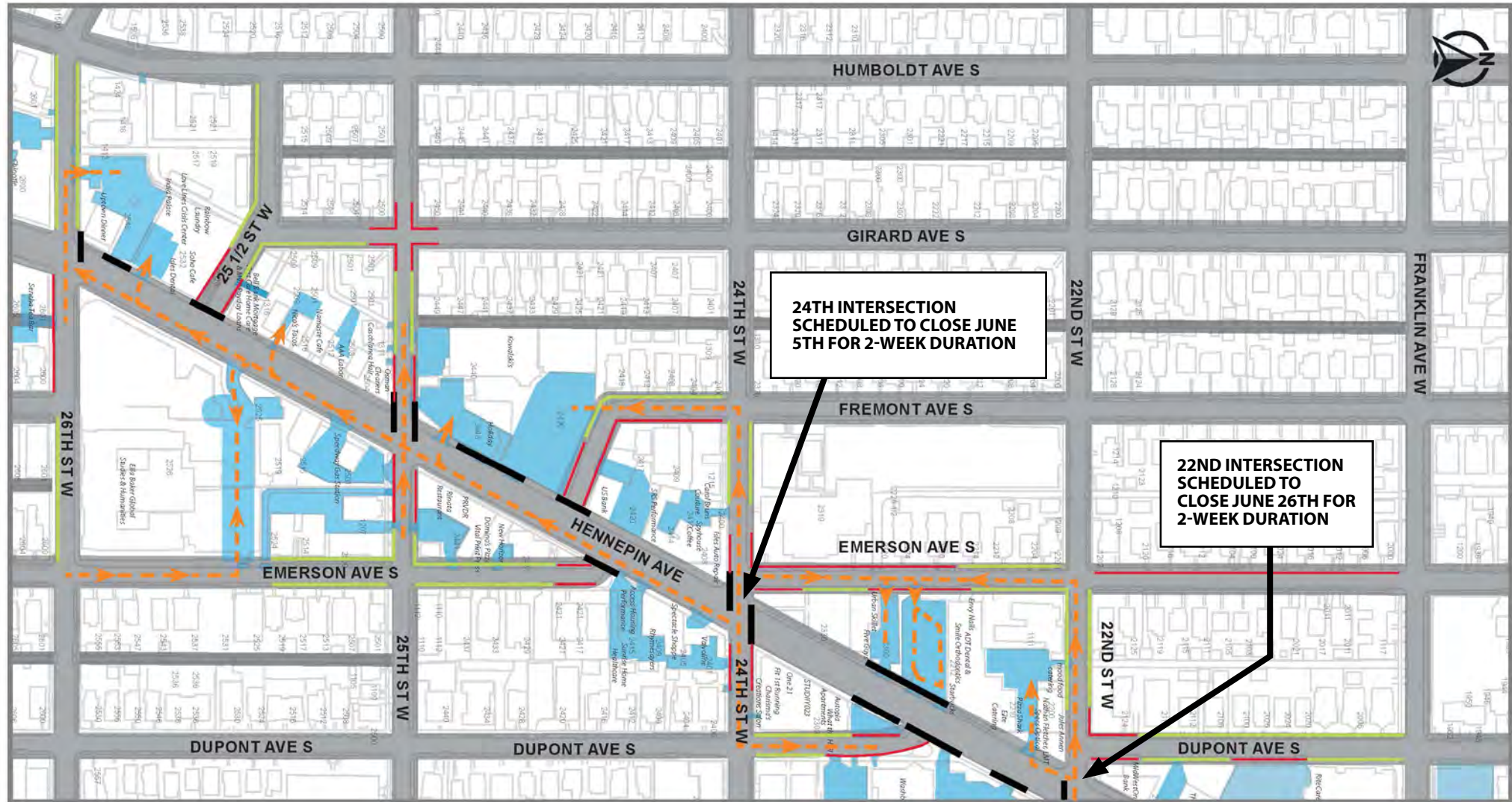


Hennepin Ave S Reconstruction Project

(W Lake St. to Douglas Ave.)

Business Parking / Access

June 15- 21, 2025



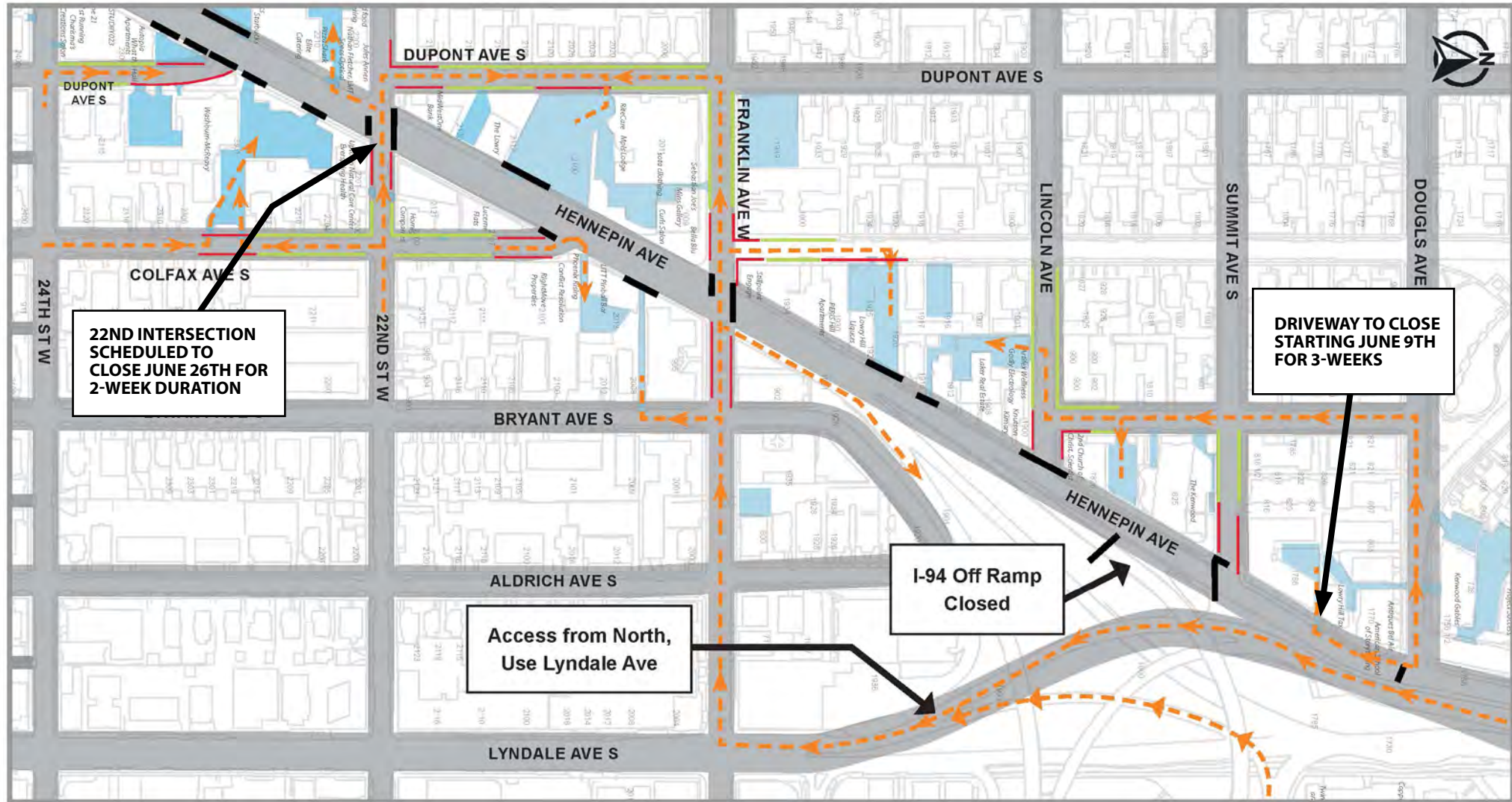
- Private/Business parking
- No Parking
- Onstreet Parking
- Road or Access Closed
- Business Access Route

Hennepin Ave S Reconstruction Project

(W Lake St. to Douglas Ave.)

Business Parking / Access

June 15- 21, 2025



■ Private/Business parking
 ■ No Parking
 ■ Onstreet Parking
 ■ Road or Access Closed
 → Business Access Route

Hennepin Ave S Reconstruction Project

(W Lake St. to Douglas Ave.)

In-Progress Images

June 15- 21, 2025



Hennepin Ave S Reconstruction Project

(W Lake St. to Douglas Ave.)

In-Progress Images

June 15- 21, 2025



Hennepin Ave S Reconstruction Project

(W Lake St. to Douglas Ave.)

In-Progress Images

June 15- 21, 2025



Hennepin Ave S Reconstruction Project

(W Lake St. to Douglas Ave.)

In-Progress Images

June 15- 21, 2025



Hennepin Ave S Reconstruction Project

(W Lake St. to Douglas Ave.)

In-Progress Images

June 15- 21, 2025

