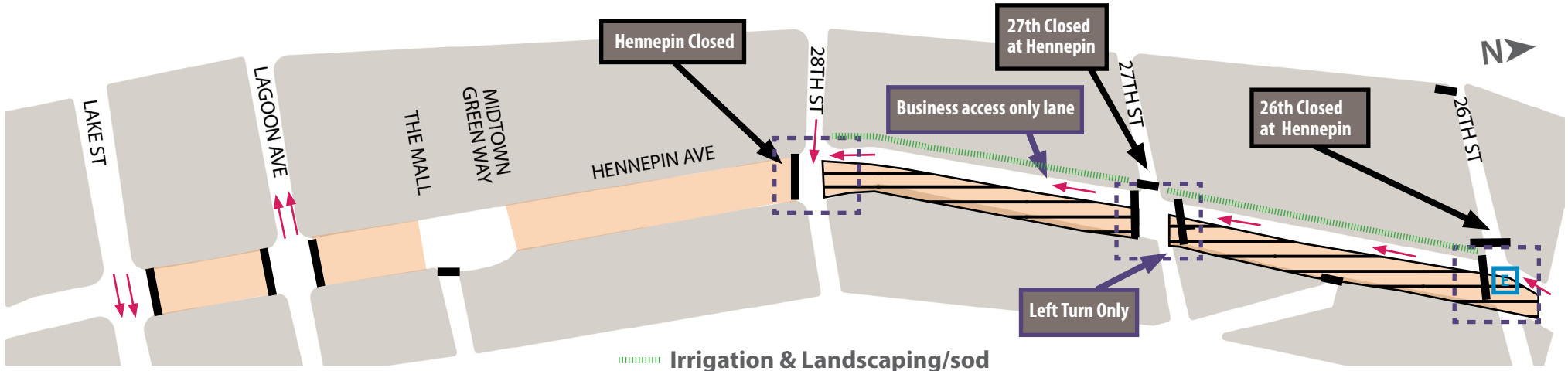


Hennepin Ave S Reconstruction Project

(W Lake St. to 26th St)

Construction & Traffic Impact Update

November 17-23, 2024



Page 1

WHAT'S HAPPENING

Lake St to 26th St

- Roadway work is finishing up for the season between 28th and 26th.
- Minor concrete work on sidewalks, medians, and curb will finish up next week
- Landscaping, and striping will continue into next week

WHAT TO EXPECT

Lake St to 26th St

- Roadway & Utility work using heavy equipment will increase noise, vibration, and dust in work areas and sidewalks.
- Cross streets will at times be reduced to 1-lane.
- Parking lanes will be closed at certain locations on side streets.
- Business access will remain open during the construction.
- Pedestrian detours will be set up as needed. Greater impacts can be expected at intersections where work is occurring.
- Metro Transit buses will be detoured over to Lyndale Ave. via Lake St or 31st St. and 24th St.

STAY CONNECTED

Visit the project website

Sign up for project updates on the project website.

[Minneapolis.gov/government/projects/hennepin-ave-s/](https://www.minneapolis.gov/government/projects/hennepin-ave-s/)



CONTACT US

Adam Hayow, Project Engineer - Public Works

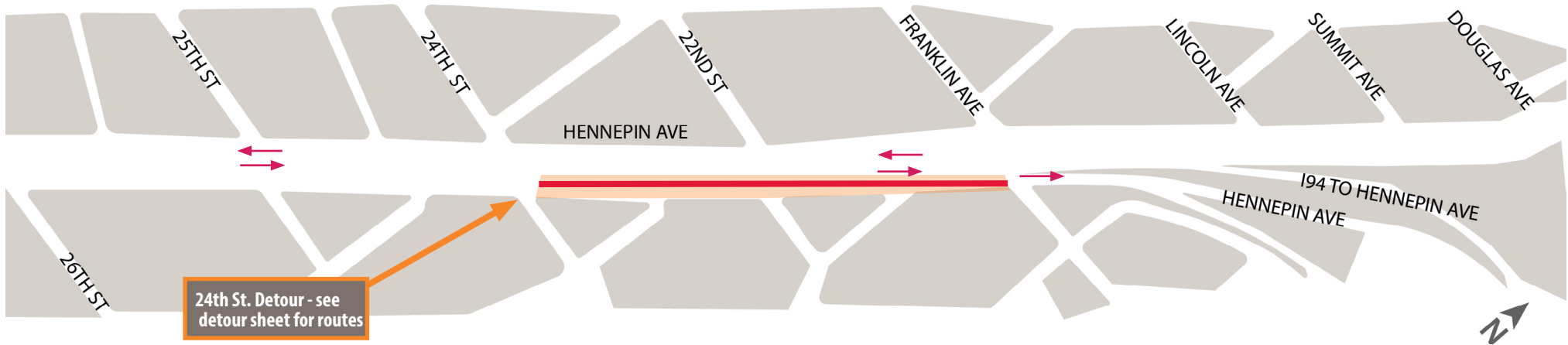
📞 612-673-2172 ✉️ adam.hayow@minneapolismn.gov

Hennepin Ave S Reconstruction Project

(W 26th St. to Douglas Ave)

Construction & Traffic Impact Update

November 17-23, 2024



Page 2

Construction work: — Xcel Energy Duct Bank

Partial Intersection Restriction

Traffic impact: Lane Closures

Travel Lanes CenterPoint Gas



WHAT'S HAPPENING

26th St to Douglas Ave

- Utility work on Phase 2 between 26th and Franklin has begun. Both CenterPoint Energy and Xcel Energy will be working in the east side parking lane and North Bound Lane to install new gas mains, concrete duct banks, manholes, and replace gas services.



WHAT TO EXPECT

26th St to Douglas Ave

- Roadway & Utility work using heavy equipment will increase noise, vibration, and dust in work areas and sidewalks.
- Vehicle traffic will reduce travel lanes down to 1-lane in both directions during non-rush hours. Depending on the block's construction activity.
- Cross streets will at times be reduced to 1-lane.
- Parking lanes will be closed at certain locations on side locations.
- Business access will remain open during the construction.
- Pedestrian detours will be set up as needed. Greater impacts can be expected at intersections where work is occurring.
- Metro Transit buses will be detoured over to Lyndale Ave. via Lake St or 31st. St. and 24th St.



STAY CONNECTED

Visit the project website

Sign up for project updates on the project website.

[Minneapolis.gov/government/projects/hennepin-ave-s/](https://www.minneapolis.gov/government/projects/hennepin-ave-s/)



CONTACT US

Adam Hayow, Project Engineer - Public Works
 ☎ 612-673-2172 ✉ adam.hayow@minneapolis.gov

Hennepin Ave S Reconstruction Project

(W Lake St. to Douglas Ave.)

Block-by-Block Work Summary

November 17-23, 2024



STREET BLOCK	PROJECT RELATED WORK	ANTICIPATED ROAD/PEDESTRIAN RESTRICTIONS				NOTES
		TEMPORARY PED RAMPS	PARKING RESTRICTIONS	TWO LANES OPEN (5-9 AM + 3-7 PM)	ONE LANE OPEN	
Lake St. Intersection						
Lake St. - Lagoon Ave	Signing and Striping	ROAD CLOSED				
Lagoon Ave Intersection	Signing and Striping					
Lagoon Ave -29th St.	Signing and Striping	ROAD CLOSED				
29th St. Intersection	Signing and Striping	X	X		X	
29th St. - 28th St.	Signing and Striping	X	X		X	
28th St. Intersection	Signing and Striping, Landscaping	X	X		X	
28th St. - 27th St.	Signing and Striping, Landscaping	X	X		X	Business access lane open Southbound from 26th to 28th
27th St. Intersection	Signing and Striping, Landscaping	X	X		X	Business access lane open Southbound from 26th to 28th. Intersection closed WESTof Hennepin.
27th St - 26th St.	Signing and Striping, Landscaping	X	X		X	Business access lane open Southbound from 26th to 28th
26th St. Intersection	Signing and Striping, Electrical	X	X		X	Business access lane open Southbound from 26th to 28th. Intersection closed WESTof Hennepin.
26th St. -25th St.						
25th St. Intersection						
25th St - 24th St.						
24th St. Intersection						
24th St. - 22nd St.	Xcel Energy Utility work	X	X			
22nd St. Intersection	Xcel Energy Utility work	X	X			
22nd St. - Franklin Ave.	Xcel Energy Utility work	X	X			
Franklin Ave. Intersection						
Franklin Ave -Lincoln Ave.						
Lincoln Ave. Intersection						
Lincoln Ave. - Summit Ave.						
Summit Ave. Intersection						

Hennepin Ave S Reconstruction Project

(W Lake St. to Douglas Ave.)

Detour Routes
November 17-23, 2024



•▶ Detour Route N

-▶ Detour Route S

■ Phase 1 Construction zone

-▶ Business Access Route

ⓧ Road Closed

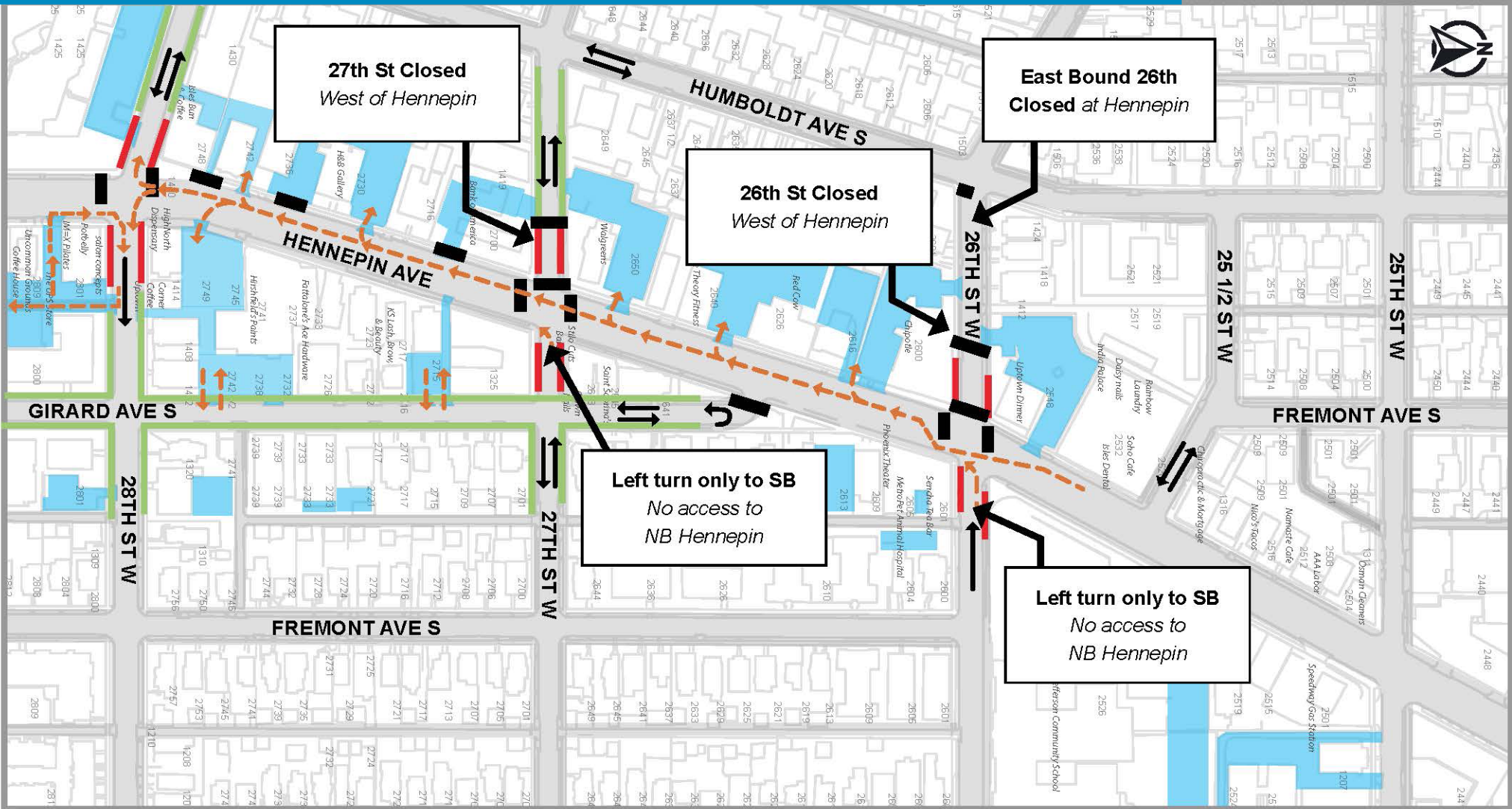
🚌 Bus Detour

Hennepin Ave S Reconstruction Project

(W Lake St. to Douglas Ave.)

Business Parking / Access Map

November 17-23, 2024



- Private/Business parking
- No Parking
- Onstreet Parking
- Road closed
- Business Access Route

Hennepin Ave S Reconstruction Project

(W Lake St. to Douglas Ave.)

In-Progress Images
November 17-23, 2024

