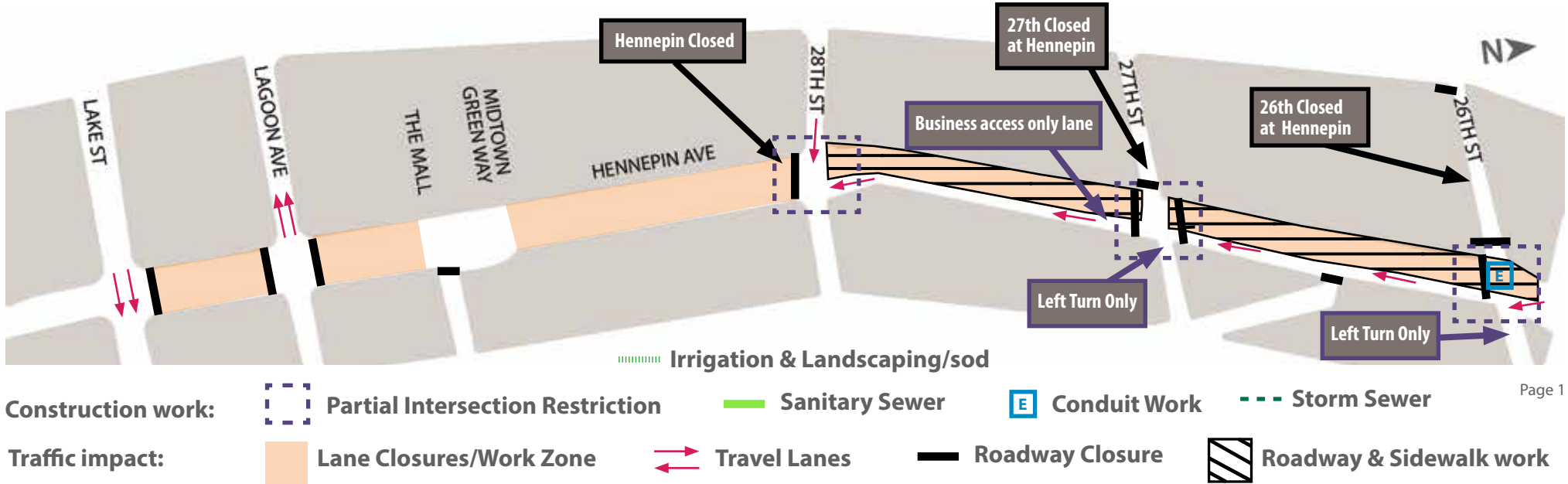


Hennepin Ave S Reconstruction Project

(W Lake St. to 26th St)

Construction & Traffic Impact Update

November 3rd-November 9th, 2024



WHAT'S HAPPENING

Lake St to 26th St

- Roadway construction continues between 28th and 26th.
- Concrete curb, medians, and sidewalk work continues over the next couple weeks.
- Asphalt paving will continue over the next couple weeks. This will require short term intermittent driveway closures and delays.

WHAT TO EXPECT

Lake St to 26th St

- Roadway & Utility work using heavy equipment will increase noise, vibration, and dust in work areas and sidewalks.
- Cross streets will at times be reduced to 1-lane.
- Parking lanes will be closed at certain locations on side streets.
- Business access will remain open during the construction.
- Pedestrian detours will be set up as needed. Greater impacts can be expected at intersections where work is occurring.
- Metro Transit buses will be detoured over to Lyndale Ave. via Lake St or 31st St. and 24th St.

STAY CONNECTED

Visit the project website

Sign up for project updates on the project website.

[Minneapolismn.gov/government/projects/hennepin-ave-s/](https://minneapolismn.gov/government/projects/hennepin-ave-s/)



CONTACT US

Adam Hayow, Project Engineer - Public Works

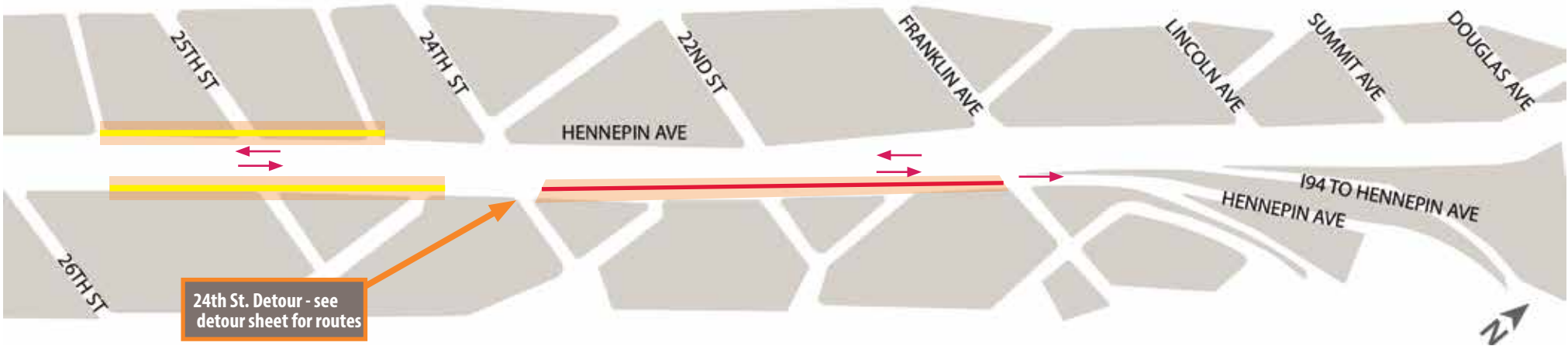
📞 612-673-2172 ✉️ adam.hayow@minneapolismn.gov

Hennepin Ave S Reconstruction Project

(W 26th St. to Douglas Ave)

Construction & Traffic Impact Update

November 3rd-November 9th, 2024



Page 2

Construction work: — Xcel Energy Duct Bank

Partial Intersection Restriction

Traffic impact: Lane Closures

Travel Lanes CenterPoint Gas



WHAT'S HAPPENING

26th St to Douglas Ave

- Utility work on Phase 2 between 26th and Franklin has begun. Both CenterPoint Energy and Xcel Energy will be working in the east side parking lane and North Bound Lane to install new gas mains, concrete duct banks, manholes, and replace gas services.



WHAT TO EXPECT

26th St to Douglas Ave

- Roadway & Utility work using heavy equipment will increase noise, vibration, and dust in work areas and sidewalks.
- Vehicle traffic will reduce travel lanes down to 1-lane in both directions during non-rush hours. Depending on the block's construction activity.
- Cross streets will at times be reduced to 1-lane.
- Parking lanes will be closed at certain locations on side locations.
- Business access will remain open during the construction.
- Pedestrian detours will be set up as needed. Greater impacts can be expected at intersections where work is occurring.
- Metro Transit buses will be detoured over to Lyndale Ave. via Lake St or 31st. St. and 24th St.



STAY CONNECTED

Visit the project website

Sign up for project updates on the project website.

[Minneapolis.gov/government/projects/hennepin-ave-s/](https://www.minneapolis.gov/government/projects/hennepin-ave-s/)



CONTACT US

Adam Hayow, Project Engineer - Public Works

📞 612-673-2172 ✉️ adam.hayow@minneapolis.gov

Hennepin Ave S Reconstruction Project

(W Lake St. to Douglas Ave.)

Block-by-Block Work Summary
November 3rd-November 9th, 2024



STREET BLOCK	PROJECT RELATED WORK	ANTICIPATED ROAD/PEDESTRIAN RESTRICTIONS				NOTES
		TEMPORARY PED RAMPS	PARKING RESTRICTIONS	TWO LANES OPEN (5-9 AM + 3-7 PM)	ONE LANE OPEN	
Lake St. Intersection	Sidewalk fill ins					
Lake St. - Lagoon Ave	Sidewalk fill ins	ROAD CLOSED				
Lagoon Ave Intersection	Sidewalk fill ins					
Lagoon Ave -29th St.	Sidewalk fill ins	ROAD CLOSED				
29th St. Intersection	Sidewalk fill ins	X	X		X	
29th St. - 28th St.	Sidewalk fill ins	X	X		X	
28th St. Intersection	Paving	X	X		X	
28th St. - 27th St.	Curb, irrigation, & Paving	X	X		X	Business access lane open Southbound from 26th to 28th
27th St. Intersection	Paving	X	X		X	Business access lane open Southbound from 26th to 28th. Intersection closed WESTof Hennepin.
27th St - 26th St.	Paving	X	X		X	Business access lane open Southbound from 26th to 28th
26th St. Intersection	Electrical	X	X		X	Business access lane open Southbound from 26th to 28th. Intersection closed WESTof Hennepin.
26th St. -25th St.	CenterPoint Energy Work	X	X			
25th St. Intersection	CenterPoint Energy Work	X	X			
25th St - 24th St.						
24th St. Intersection						
24th St. - 22nd St.	Xcel Energy Utility work	X	X			
22nd St. Intersection	Xcel Energy Utility work	X	X			
22nd St. - Franklin Ave.	Xcel Energy Utility work	X	X			
Franklin Ave. Intersection						
Franklin Ave -Lincoln Ave.						
Lincoln Ave. Intersection						
Lincoln Ave. - Summit Ave.						
Summit Ave. Intersection						

Hennepin Ave S Reconstruction Project

(W Lake St. to Douglas Ave.)

Detour Routes
November 3rd-November 9th, 2024

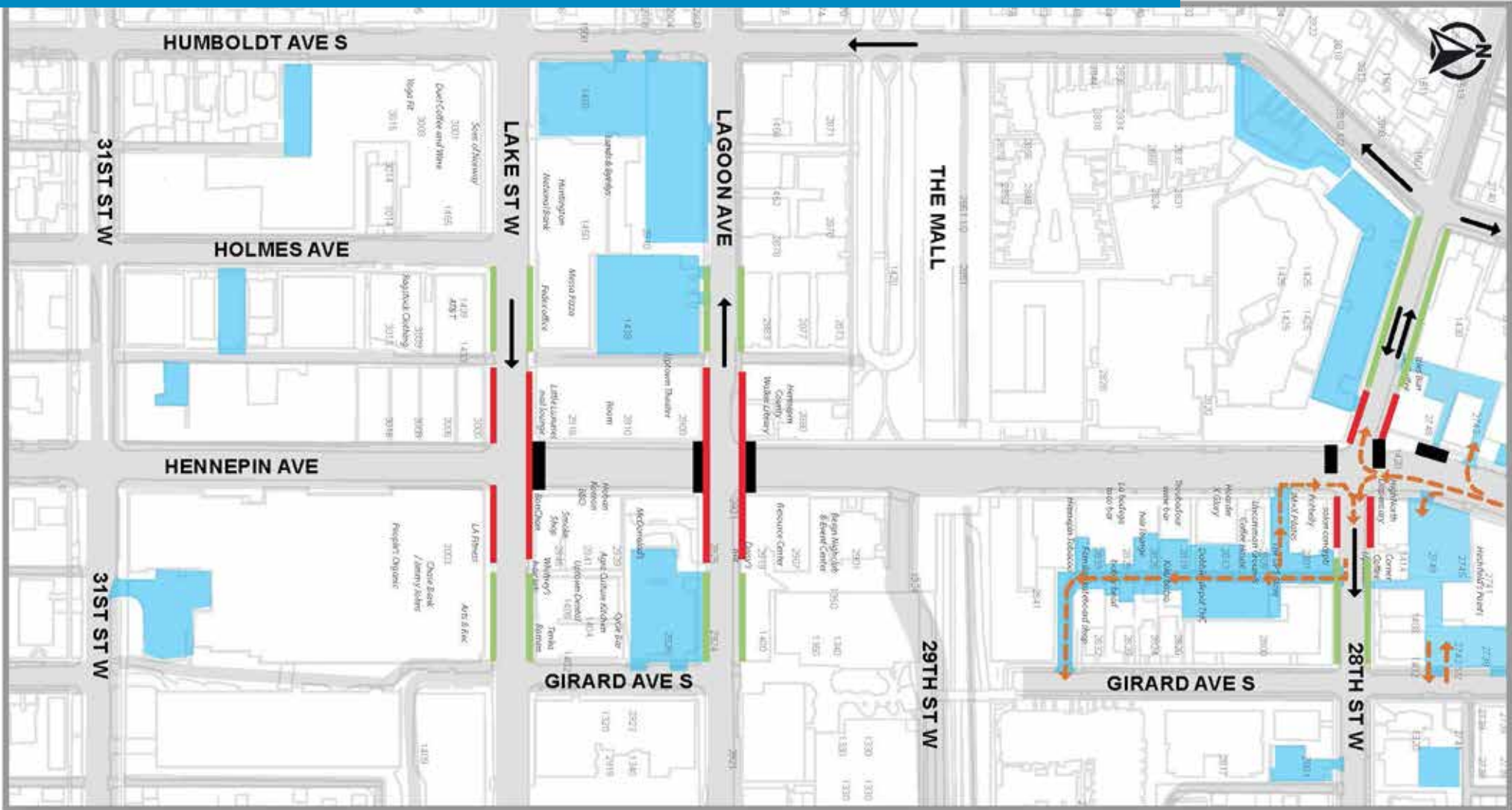


- ▶ Detour Route N
- Detour Route S
- Phase 1 Construction zone
- Business Access Route
- ⊗ Road Closed
- 🚌 Bus Detour

Hennepin Ave S Reconstruction Project

(W Lake St. to Douglas Ave.)

Business Parking / Access Map
November 3rd-November 9th, 2024

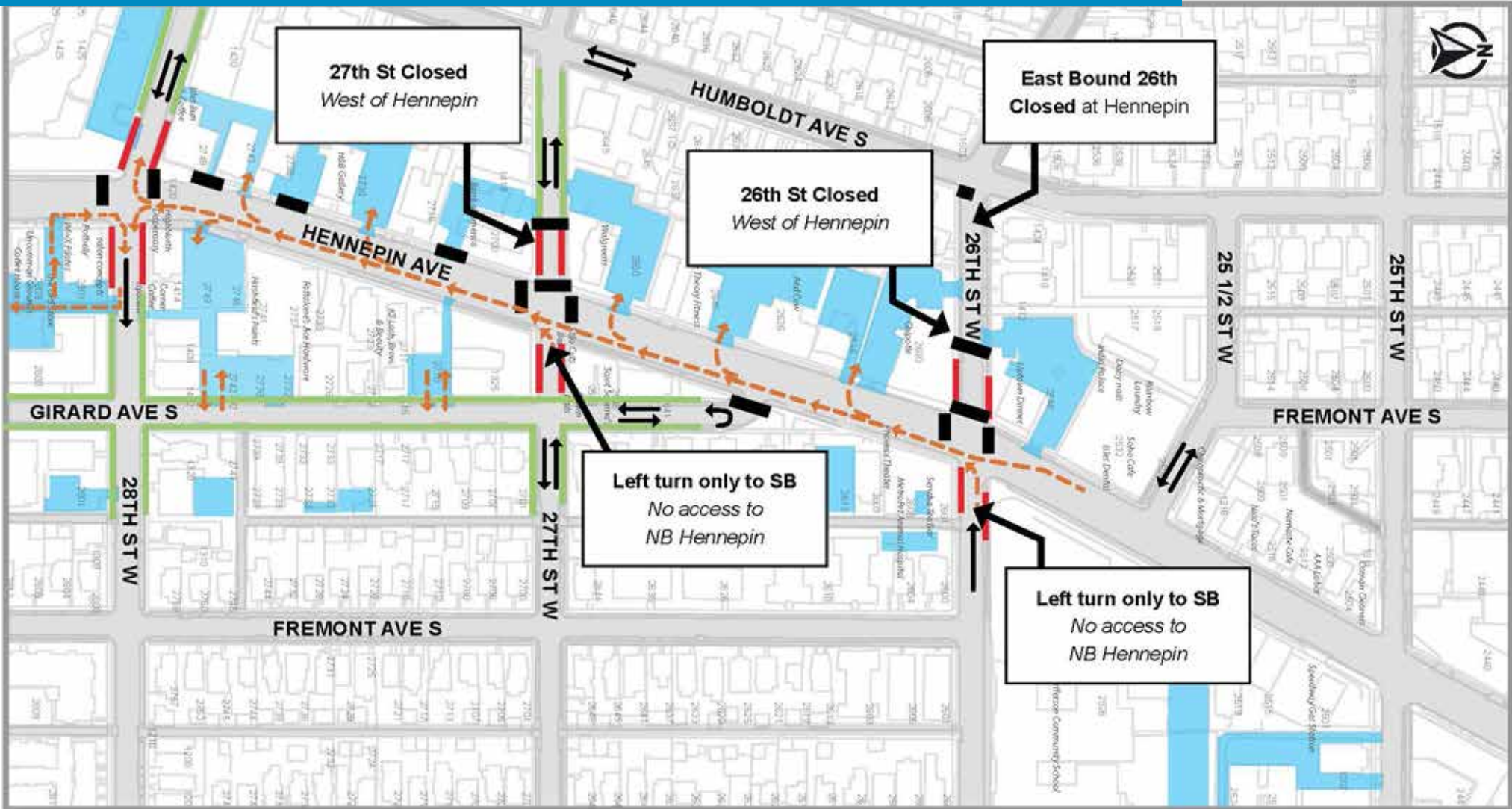


- Private/Business parking
- No Parking
- Onstreet Parking
- Road closed
- Business Access Route

Hennepin Ave S Reconstruction Project

(W Lake St. to Douglas Ave.)

Business Parking / Access Map
November 3rd-November 9th, 2024



Hennepin Ave S Reconstruction Project

(W Lake St. to Douglas Ave.)

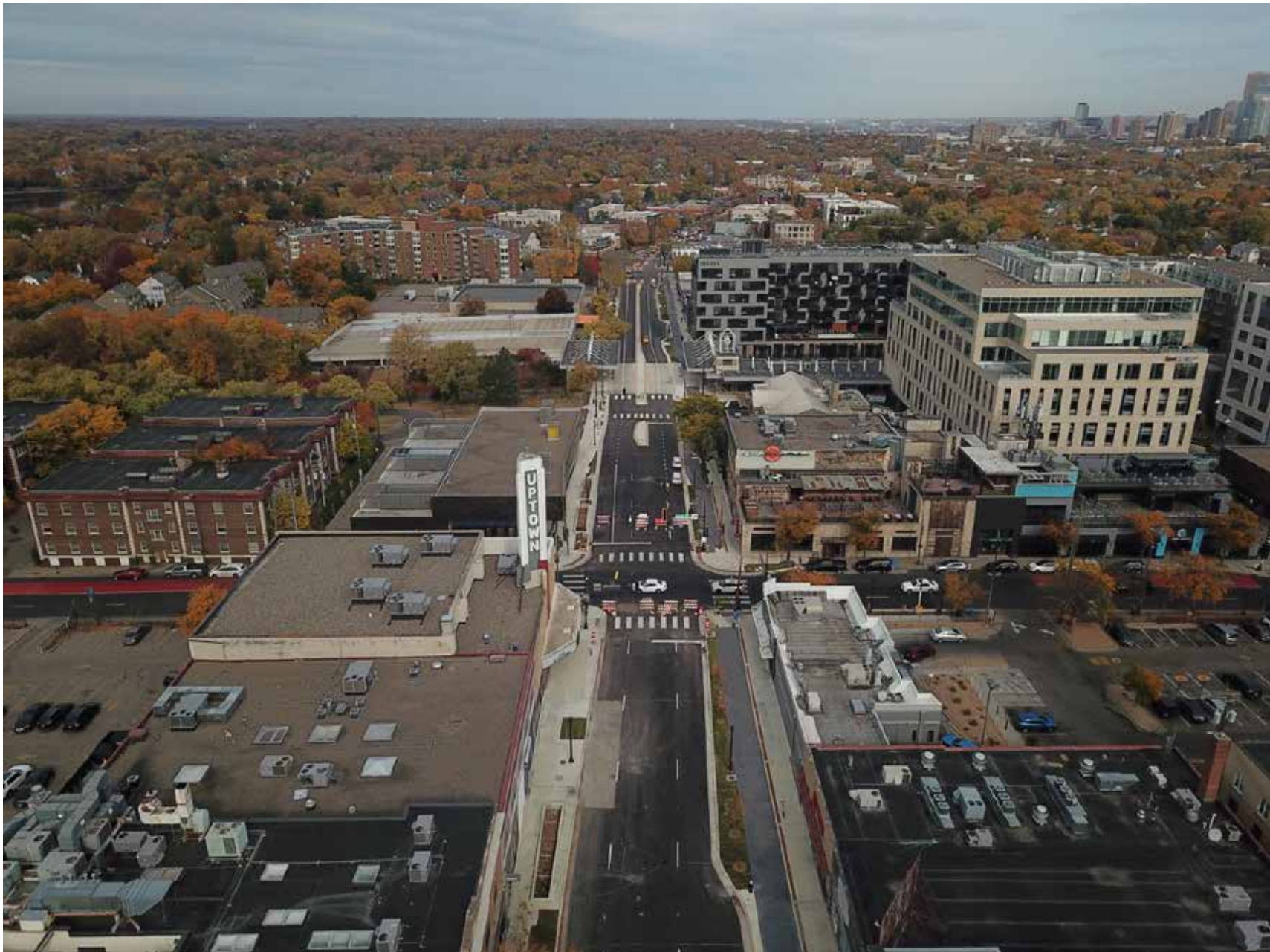
In-Progress Images
November 3rd-November 9th, 2024



Hennepin Ave S Reconstruction Project

(W Lake St. to Douglas Ave.)

In-Progress Images
November 3rd-November 9th, 2024



Hennepin Ave S Reconstruction Project

(W Lake St. to Douglas Ave.)

In-Progress Images
November 3rd-November 9th, 2024



Hennepin Ave S Reconstruction Project

(W Lake St. to Douglas Ave.)

In-Progress Images
November 3rd-November 9th, 2024





27th St

Drive to be closed

Stop Sign Facing North

Driveway to remain open

Break in Median to allow traffic access to driveways

Drive to be closed

Median stops short of this driveway allowing for traffic to not be impeded by median

28th St

Concrete Curb, Median, & Paving Plan
Wednesday 10/30 - Tuesday 11/5
Paving on 11/4-11/5 & Paving on 11/8-11/9

** Note there will be short term, intermittent driveway access disruptions during paving operations.





26th St

W 26th St

Drive to be closed

Stop Sign Facing North

Driveway to Remain Open

Traffic

Work Area

Stop Sign Facing North

Driveway to Remain Open

Drive to be closed

Stop Sign Facing North

Girard Ave S

Fremont Ave S

27th St

300 ft

Google Earth





27th St

Stop Sign facing north

Break in median to be filled in

Concrete Curb, Median, & Paving Plan
Paving on 11/5-11/9
*** All driveways will be Closed on Monday 11/11 for final wear course paving

Median stops short of this driveway allowing for traffic to not be impeded by median

Driveway closed

28th St

W 28th St

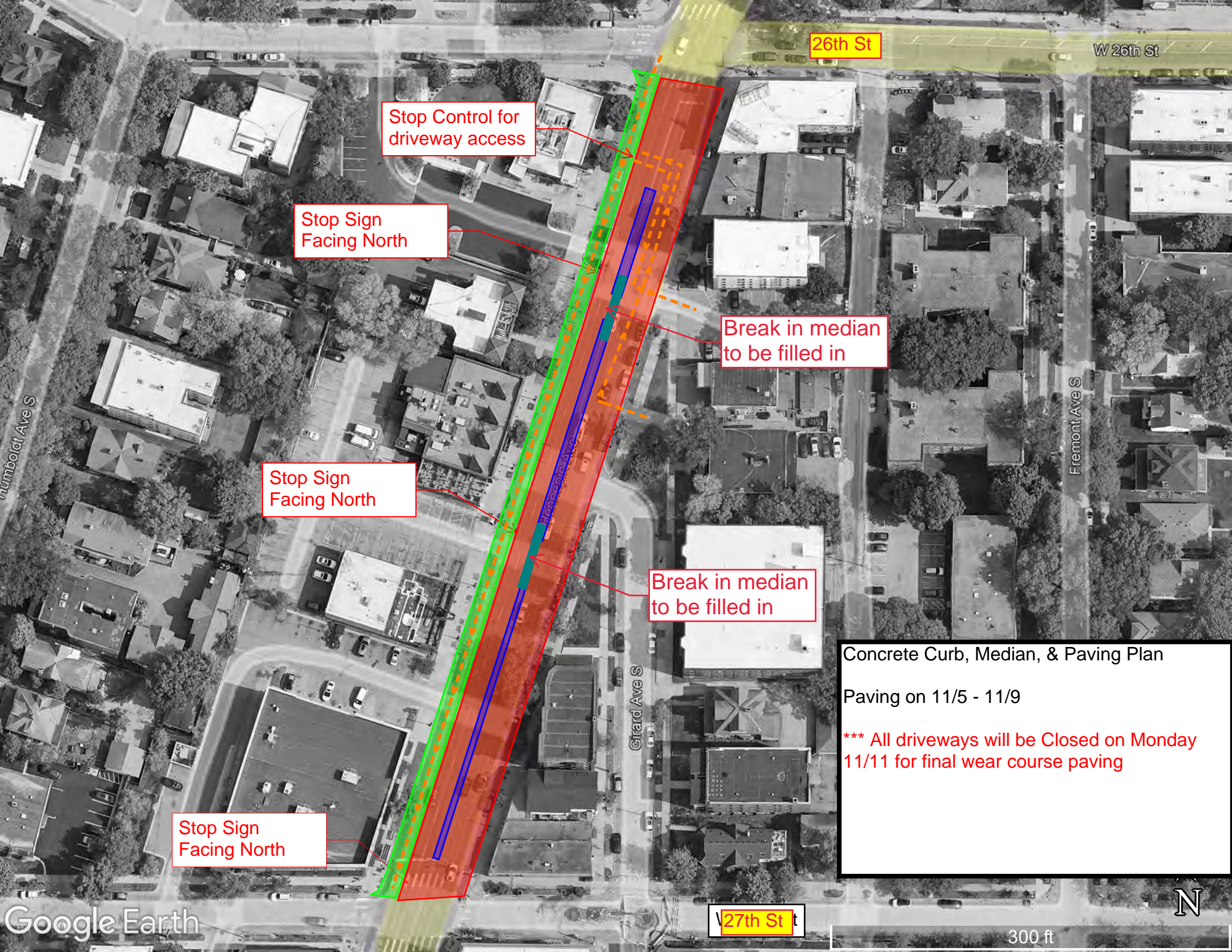
W 28th St

Ave S

Google Earth

200 ft





26th St

W 26th St

Stop Control for driveway access

Stop Sign Facing North

Break in median to be filled in

Stop Sign Facing North

Break in median to be filled in

Stop Sign Facing North

Concrete Curb, Median, & Paving Plan
Paving on 11/5 - 11/9
*** All driveways will be Closed on Monday 11/11 for final wear course paving

27th St

300 ft

