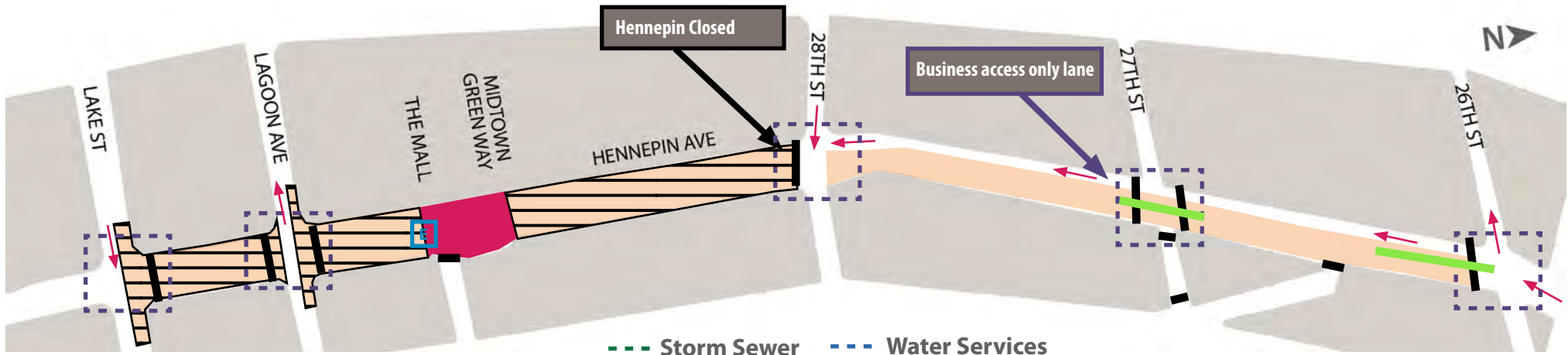


Hennepin Ave S Reconstruction Project

(W Lake St. to 26th St)

Construction & Traffic Impact Update

July 28 - August 3, 2024



Page 1



WHAT'S HAPPENING

Lake St to 26th St

- The City Roadway construction continues. This work includes roadway grading, sanitary and storm sewer work, water service replacement, and concrete work.
- Both Lake St and Lagoon are reduced to 1-lane through the intersections
- Deep Sanitary Sewer replacement will continue north of the Greenway
- New concrete curb and sidewalk work will continue
- Bridge modification work will continue on the bridge over the Midtown Greenway



WHAT TO EXPECT

Lake St to 26th St

- Roadway & Utility work using heavy equipment will increase noise, vibration, and dust in work areas and sidewalks.
- Cross streets will at times be reduced to 1-lane.
- Parking lanes will be closed at certain locations on side streets.
- Business access will remain open during the construction.
- Pedestrian detours will be set up as needed. Greater impacts can be expected at intersections where work is occurring.
- Metro Transit buses will be detoured over to Lyndale Ave. via Lake St or 31st. St. and 24th St.



STAY CONNECTED

Visit the project website

Sign up for project updates on the project website.

[Minneapolis.gov/government/projects/hennepin-ave-s/](https://www.minneapolis.gov/government/projects/hennepin-ave-s/)



CONTACT US

Adam Hayow, Project Engineer - Public Works

📞 612-673-2172 ✉️ adam.hayow@minneapolis.gov

Hennepin Ave S Reconstruction Project

(W 26th St. to Douglas Ave)

Construction & Traffic Impact Update

July 28 - August 3, 2024



24th St. Detour - see detour sheet for routes

Construction work: — Xcel Energy Duct Bank

Partial Intersection Restriction

Traffic impact: Lane Closures

Travel Lanes

WHAT'S HAPPENING

26th St to Douglas Ave

- The City Roadway construction has begun. This work includes pavement removals, clearing activities and preparations for the deep sanitary sewer replacement work.
- Utility work on Phase 1B will continue north of Franklin. Both CenterPoint Energy and Xcel Energy will be installing new gas mains, concrete duct banks, and manholes.

WHAT TO EXPECT

26th St to Douglas Ave

- Roadway & Utility work using heavy equipment will increase noise, vibration, and dust in work areas and sidewalks.
- Vehicle traffic will reduce travel lanes down to 1-lane in both directions during non-rush hours. Depending on the block's construction activity.
- Cross streets will at times be reduced to 1-lane.
- Parking lanes will be closed at certain locations on side locations.
- Business access will remain open during the construction.
- Pedestrian detours will be set up as needed. Greater impacts can be expected at intersections where work is occurring.
- Metro Transit buses will be detoured over to Lyndale Ave. via Lake St or 31st. St. and 24th St.

STAY CONNECTED

Visit the project website
Sign up for project updates on the project website.

[Minneapolismn.gov/government/projects/hennepin-ave-s/](https://www.minneapolis.gov/government/projects/hennepin-ave-s/)

CONTACT US
Adam Hayow, Project Engineer - Public Works
📞 612-673-2172 ✉️ adam.hayow@minneapolismn.gov

Hennepin Ave S Reconstruction Project

(W Lake St. to Douglas Ave.)

Block-by-Block Work Summary

July 28 - August 3, 2024

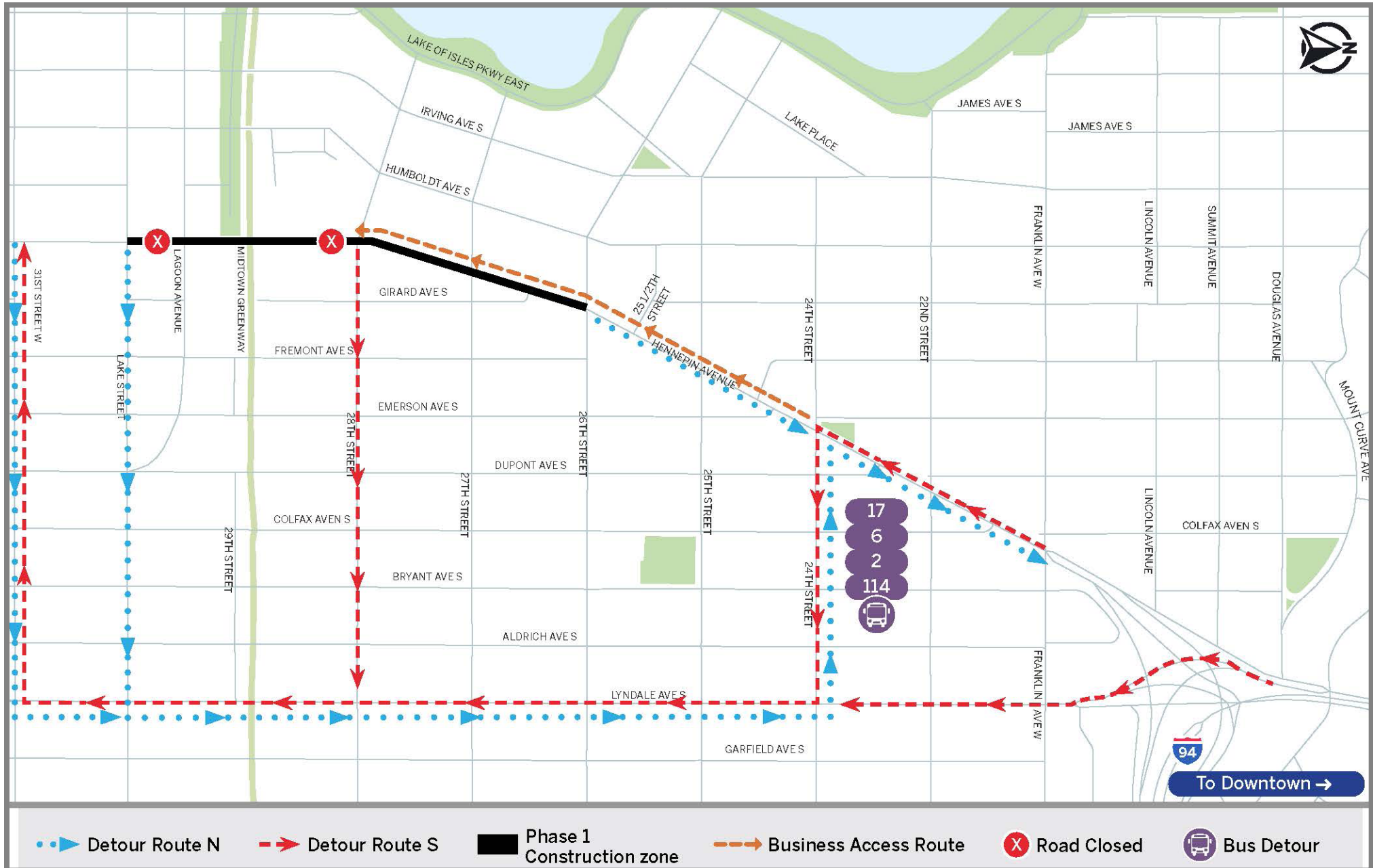


STREET BLOCK	PROJECT RELATED WORK	ANTICIPATED ROAD/PEDESTRIAN RESTRICTIONS				NOTES
		TEMPORARY PED RAMPS	PARKING RESTRICTIONS	TWO LANES OPEN (5-9 AM + 3-7 PM)	ONE LANE OPEN	
Lake St. Intersection			X		X	
Lake St. - Lagoon Ave	Planter & Sidewalk work	ROAD CLOSED				
Lagoon Ave Intersection			X		X	
Lagoon Ave -29th St.		ROAD CLOSED				
29th St. Intersection	Bridge Modification Work	X	X		X	
29th St. - 28th St.	Roadway grading, electrical, concrete curb and paving work	X	X		X	
28th St. Intersection		X	X		X	
28th St. - 27th St.		X	X		X	Business access lane open Southbound from 26th to 28th
27th St. Intersection	Sanitary Sewer work	X	X		X	Business access lane open Southbound from 26th to 28th. Intersection closed east of Hennepin.
27th St - 26th St.	Sanitary & Storm Sewer work	X	X		X	Business access lane open Southbound from 26th to 28th
26th St. Intersection						
26th St. -25th St.						
25th St. Intersection						
25th St - 24th St.						
24th St. Intersection						
24th St. - 22nd St.						
22nd St. Intersection						
22nd St. - Franklin Ave.						
Franklin Ave. Intersection						
Franklin Ave -Lincoln Ave.	Xcel Energy Utility work	X	X		X	
Lincoln Ave. Intersection	Xcel Energy Utility work	X	X		X	
Lincoln Ave. - Summit Ave.	Xcel Energy Utility work	X	X		X	
Summit Ave. Intersection						
Summit Ave. - Douglas Ave.						

Hennepin Ave S Reconstruction Project

(W Lake St. to Douglas Ave.)

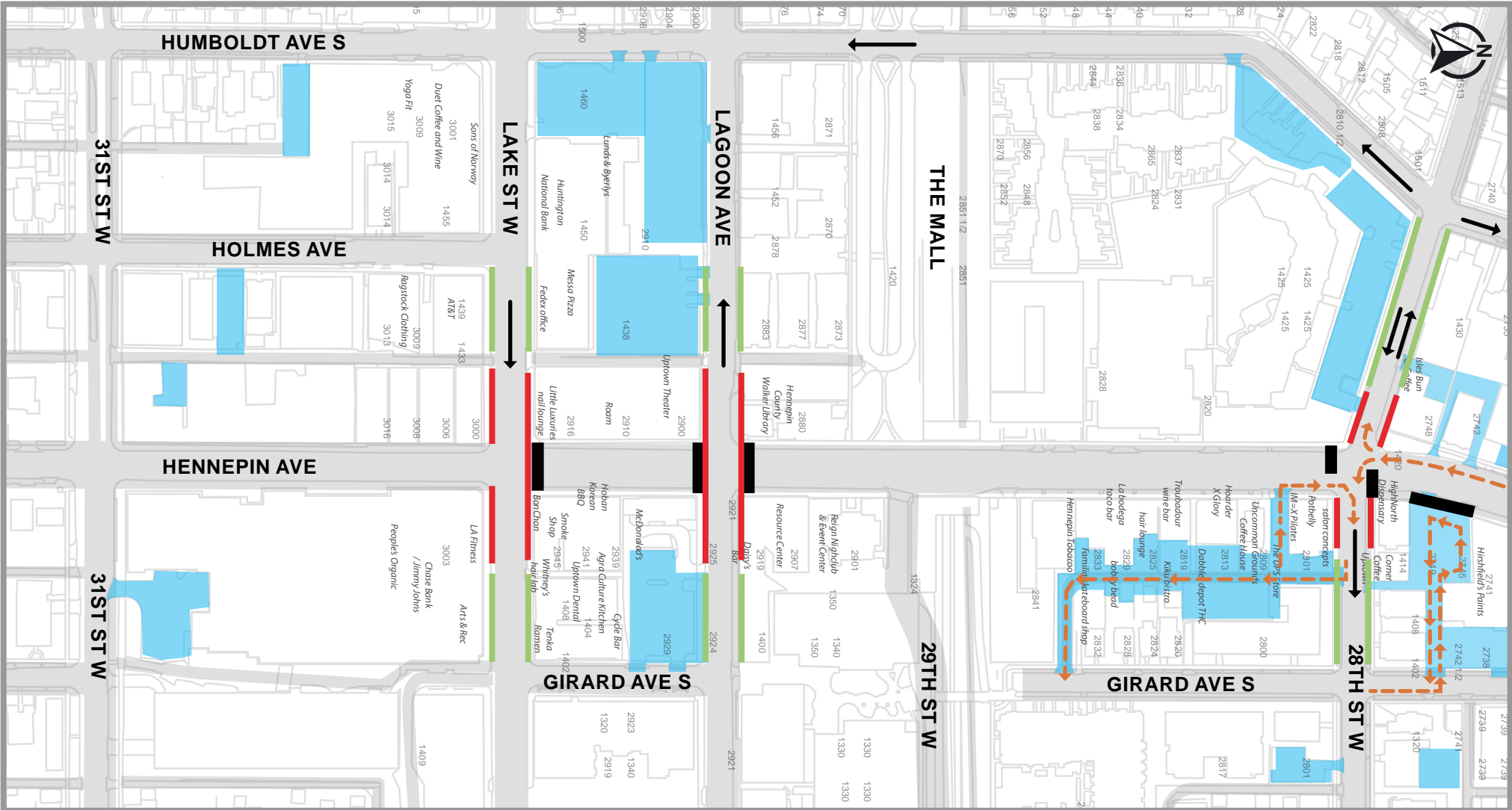
Detour Routes
July 28 - August 3, 2024



HENNEPIN AVENUE

— Reconstruction Project —

Business Parking / Access Map



■ Private/Business parking

■ No Parking

■ Onstreet Parking

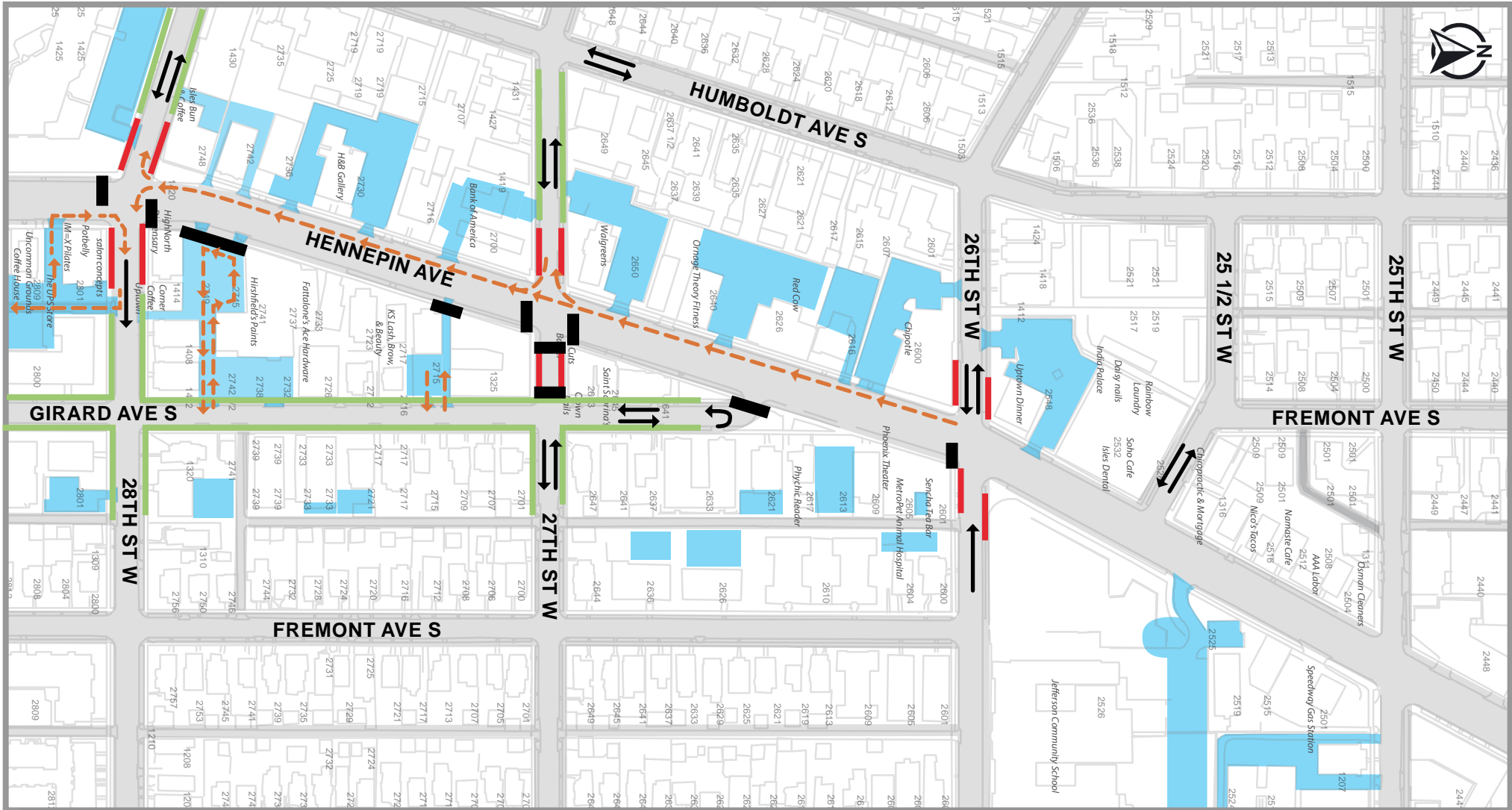
■ Road closed

- - - - - Business Access Route

HENNEPIN AVENUE

— Reconstruction Project —

Business Parking / Access Map



Private/Business parking

No Parking

Onstreet Parking

Road closed

Business Access Route

Hennepin Ave S Reconstruction Project

(W Lake St. to Douglas Ave.)

In-Progress Images
July 28 - August 3, 2024



Jul 10, 2024 11:34:19 AM
2908 Hennepin Avenue
Minneapolis
Hennepin County



Jul 11, 2024 2:28:33 PM
2809 Hennepin Avenue

Hennepin Ave S Reconstruction Project

(W Lake St. to Douglas Ave.)

In-Progress Images
July 28 - August 3, 2024



Hennepin Ave S Reconstruction Project

(W Lake St. to Douglas Ave.)

In-Progress Images
July 28 - August 3, 2024



Hennepin Ave S Reconstruction Project

(W Lake St. to Douglas Ave.)

In-Progress Images
July 28 - August 3, 2024



Hennepin Ave S Reconstruction Project

(W Lake St. to Douglas Ave.)

In-Progress Images
July 28 - August 3, 2024



Jul 25, 2024 8:32:23 AM
Minneapolis
Hennepin County



Hennepin Ave S Reconstruction Project

(W Lake St. to Douglas Ave.)

In-Progress Images
July 28 - August 3, 2024



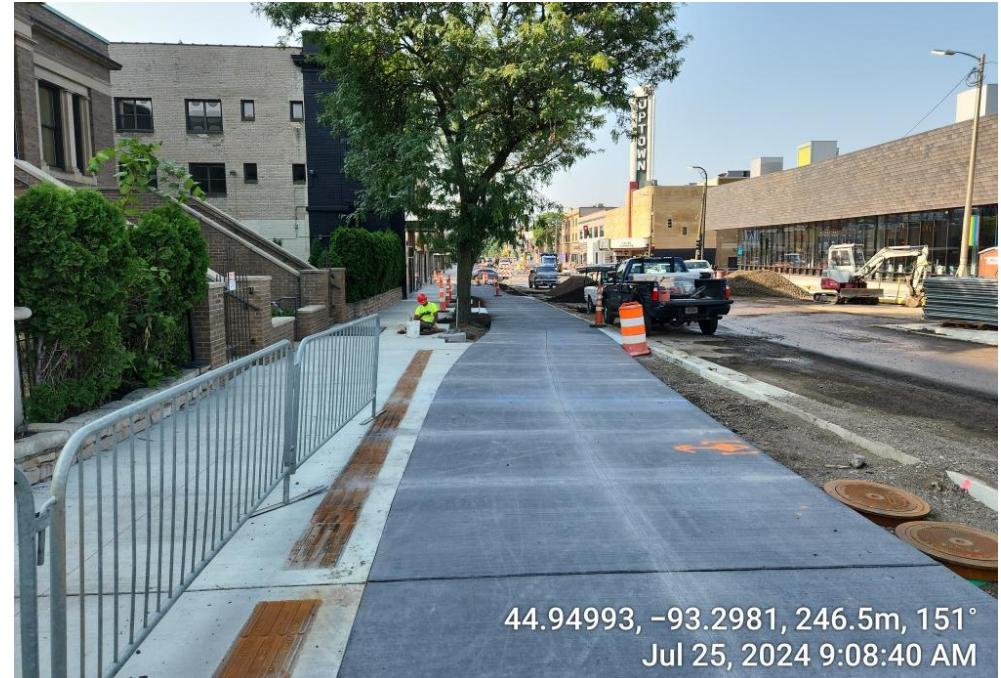
Hennepin Ave S Reconstruction Project

(W Lake St. to Douglas Ave.)

In-Progress Images
July 28 - August 3, 2024



44.94974, -93.29816, 235.4m, 147°
Jul 25, 2024 9:08:18 AM



44.94993, -93.2981, 246.5m, 151°
Jul 25, 2024 9:08:40 AM