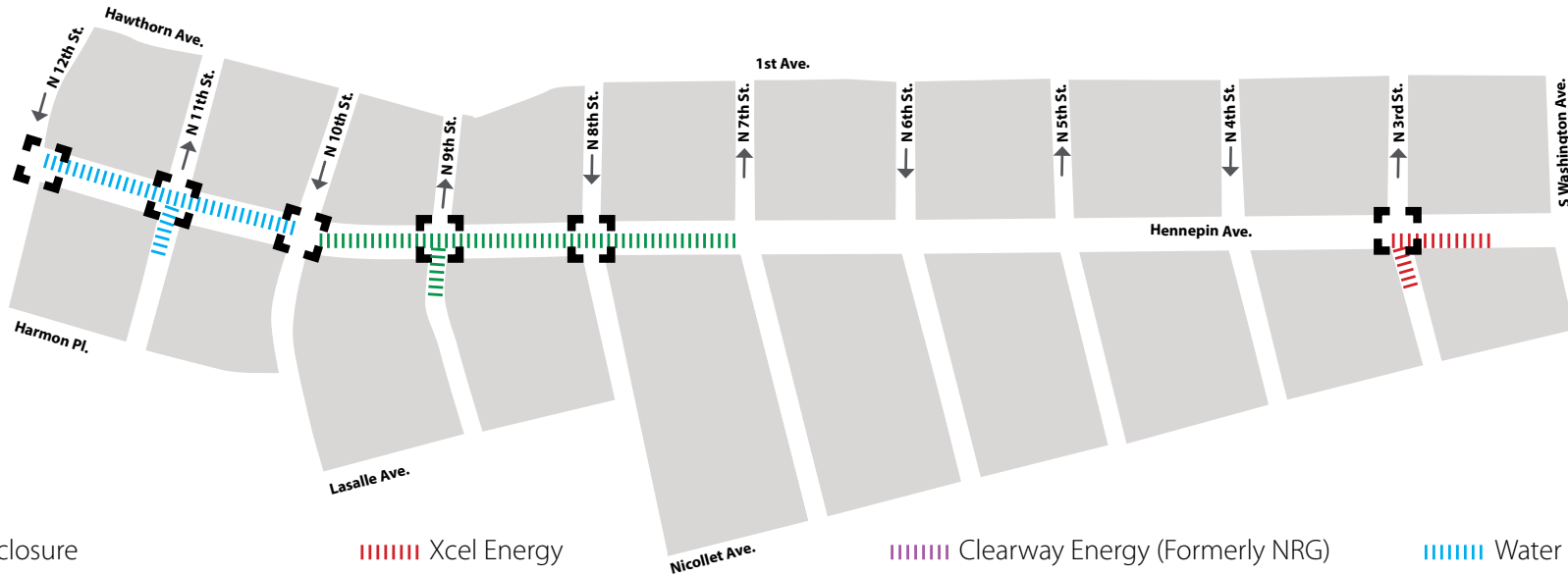


HENNEPIN AVENUE

— Reconstruction Project —

Construction Update
Volume 8: July 21–August 3, 2019



-  Full closure
-  Partial intersection reduction
-  Xcel Energy
-  Centerpoint gas
-  Clearway Energy (Formerly NRG)
-  Telecommunications
-  Water
-  City sewer



WHAT'S HAPPENING

- Utility Construction will continue from 12th to 7th. This work will continue throughout 2019.
- Utility construction will continue from 5th Street to Washington. This work will continue throughout 2020.
- Utility construction will consist of both Public and Private utility improvements, upgrades, expansion, relocations and replacements.
- Sanitary sewer work will continue at 9th Street intersection toward 7th.
- Xcel Energy will continue work between 3rd and Washington.



WHAT TO EXPECT

- Public and private utility work requiring the use of heavy equipment that will increase noise, vibration, and dust in work areas.
- Vehicle traffic congestion accompanying lane restrictions on Hennepin Ave. between 13th St and Washington Ave. Traffic will be reduced to one lane in each direction for the duration of utility construction. Lane restrictions will vary by block based on construction activity.
- Pedestrian detours as needed to facilitate construction needs. Greater impacts can be expected at intersections where work is occurring.
- Business access will remain open during the construction activity.
- Changes to Metro Transit. All Buses are detoured to Nicollet Mall. Visit Metro Transit website for specific route information.
- No left turns on or off Hennepin Ave. in certain locations.
- Cross streets will be reduced to one lane at times.

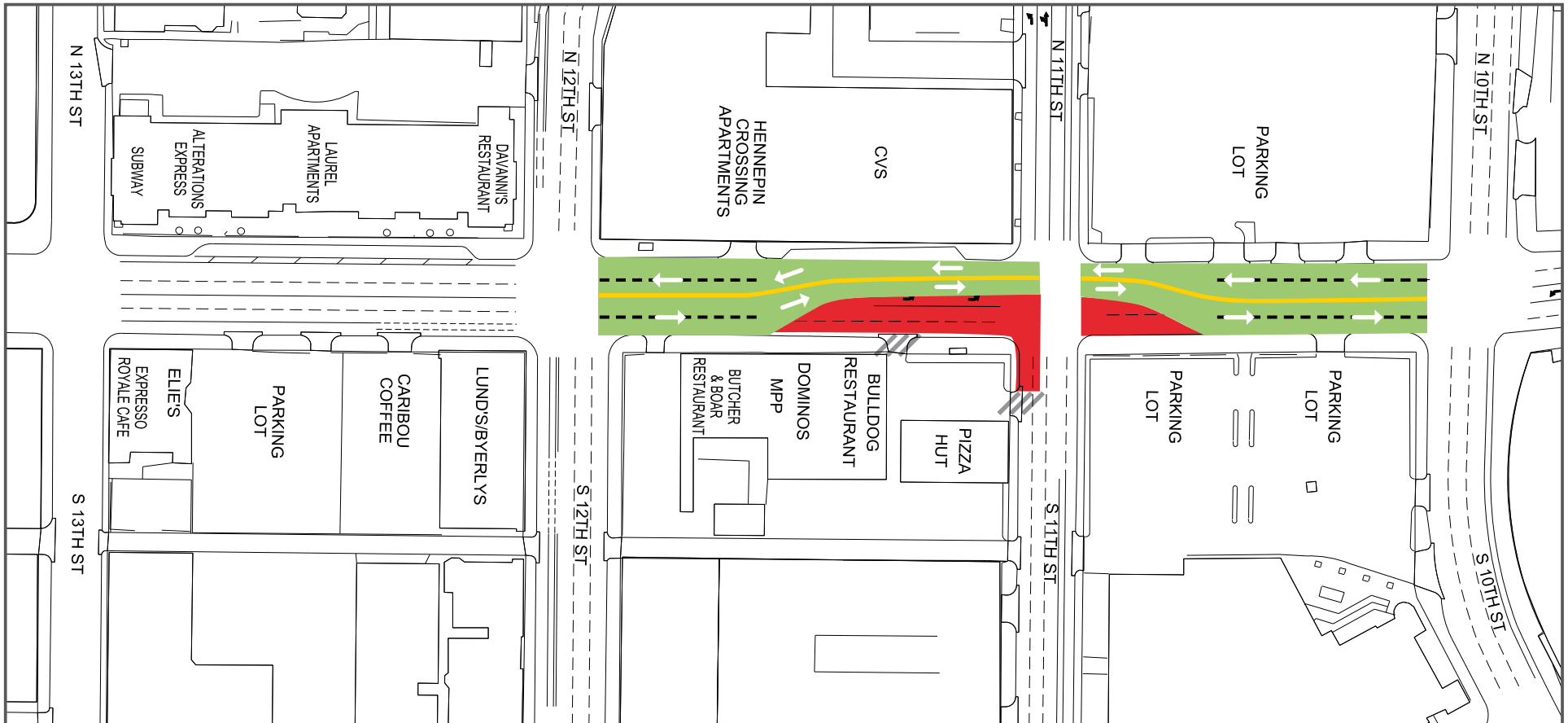


STAY CONNECTED

- Visit the project website: www.hennepindowntown.com
- Sign up for project updates on the project website.
- Contact the project hotline with questions, comments or concerns: **612-225-4049** or email HennepinCM@minneapolismn.gov



Block	Project Related Work	Anticipated Road/Pedestrian Restrictions				
		Temporary Ped Ramps	Parking Restrictions	Two Lanes Open	One Lane Open	Notes
12th Street Intersection	Water main replacement	X	X			
12th to 11th	Water main replacement		X	X		Hennepin will be reduced to 1-lane in each direction
11th Street Intersection	Water main replacement		X	X	X	
11th to 10th	Water main replacement	X	X	X		Hennepin will be reduced to 1-lane in each direction
10th Street Intersection						
10th to 9th	Sanitary sewer and manhole replacement	X	X	X		Hennepin will be reduced to 1-lane in each direction
9th Street Intersection	Sanitary sewer and manhole replacement	X	X	X		
9th to 8th	Sanitary sewer and manhole replacement	X	X	X		Hennepin will be reduced to 1-lane in each direction
8th Street Intersection	Sanitary sewer and manhole replacement	X	X		X	
8th to 7th	Sanitary sewer and manhole replacement	X	X	X		Hennepin will be reduced to 1-lane in each direction
7th Street Intersection						
7th to 6th						
6th Street Intersection						
6th to 5th						
5th Street Intersection						
5th to 4th						
4th Street Intersection						
3rd Street Intersection	Xcel Energy installing new ducts and manholes	X	X	X		
3rd to Washington	Xcel Energy installing new ducts and manholes			X		Hennepin will be reduced to 1-lane in each direction
Washington Ave Intersection						



13th Street to 10th Street

- Lane Closures will vary over the next couple weeks and are subject to change

Work zone (no vehicle access)

*Sidewalks will be maintained

Valet and loading zone

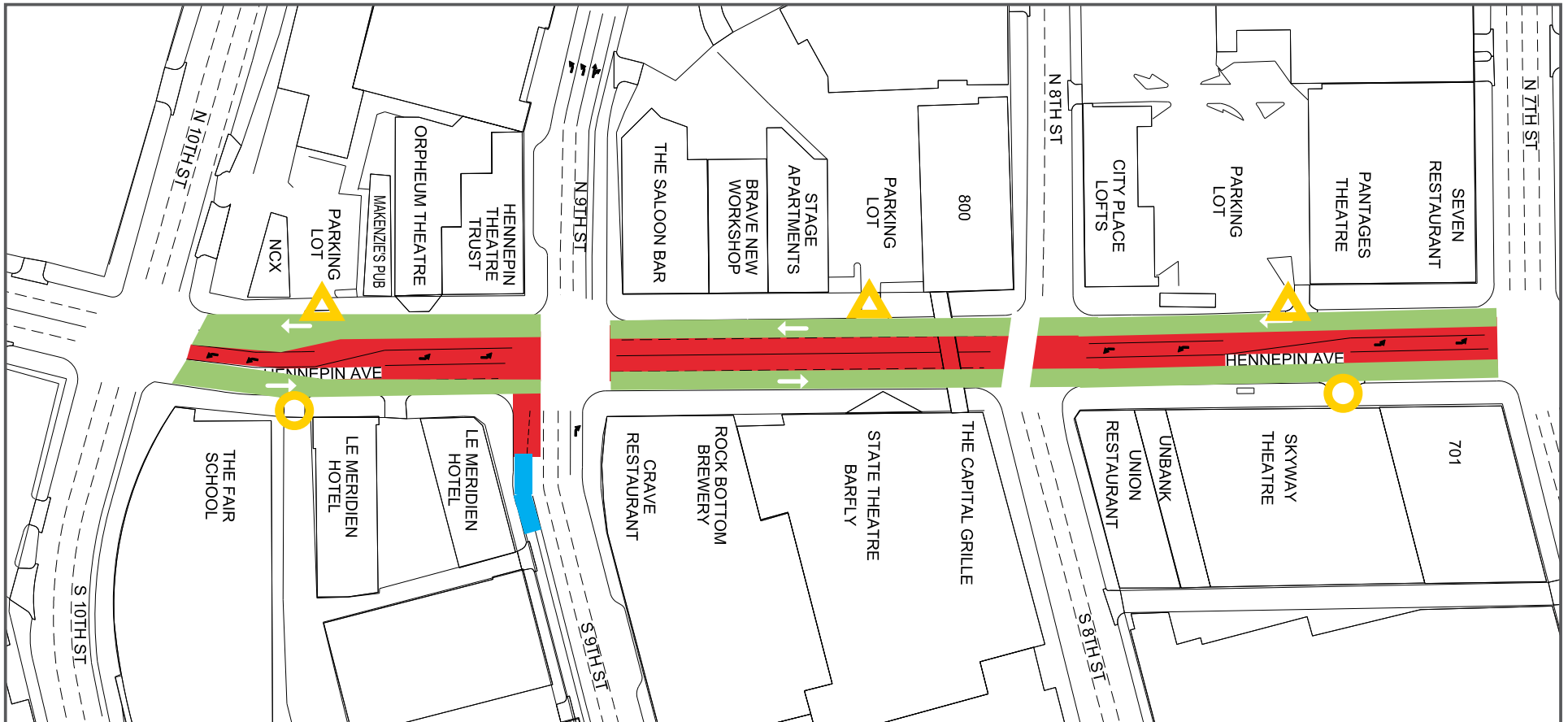
Daytime non-rush hour work zone

Work zone vehicle access maintained

Open travel lanes

Vehicle access - SB Hennepin only

Vehicle Access - NB Hennepin only



10th Street to 7th Street

- Lane Closures will vary over the next couple weeks and are subject to change

Work zone (no vehicle access)
*Sidewalks will be maintained

Valet and loading zone

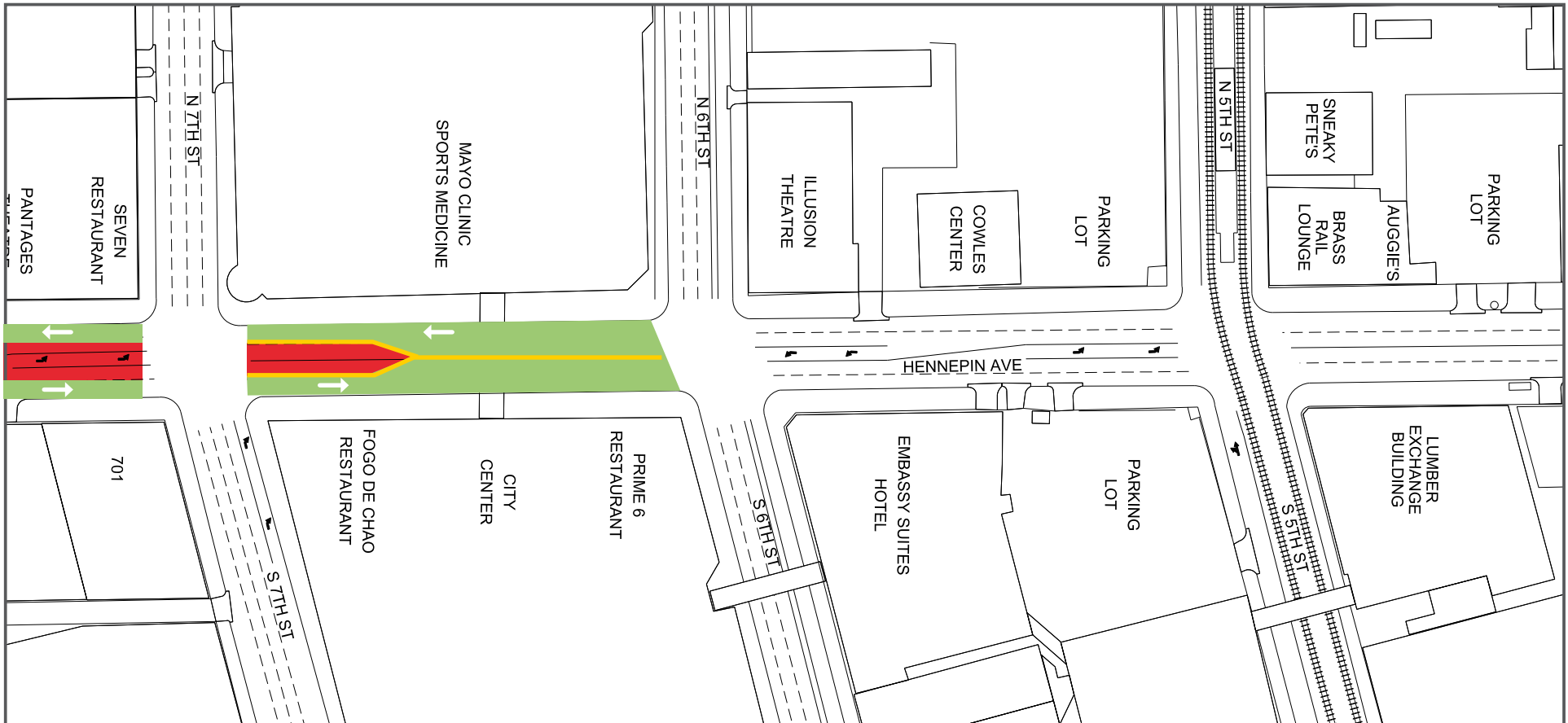
Daytime non-rush hour work zone

Work zone vehicle access maintained

Open travel lanes

Vehicle access - SB Hennepin only

Vehicle Access - NB Hennepin only



7th Street to 5th Street

- Lane Closures will vary over the next couple weeks and are subject to change

Work zone (no vehicle access)
*Sidewalks will be maintained

Valet and loading zone

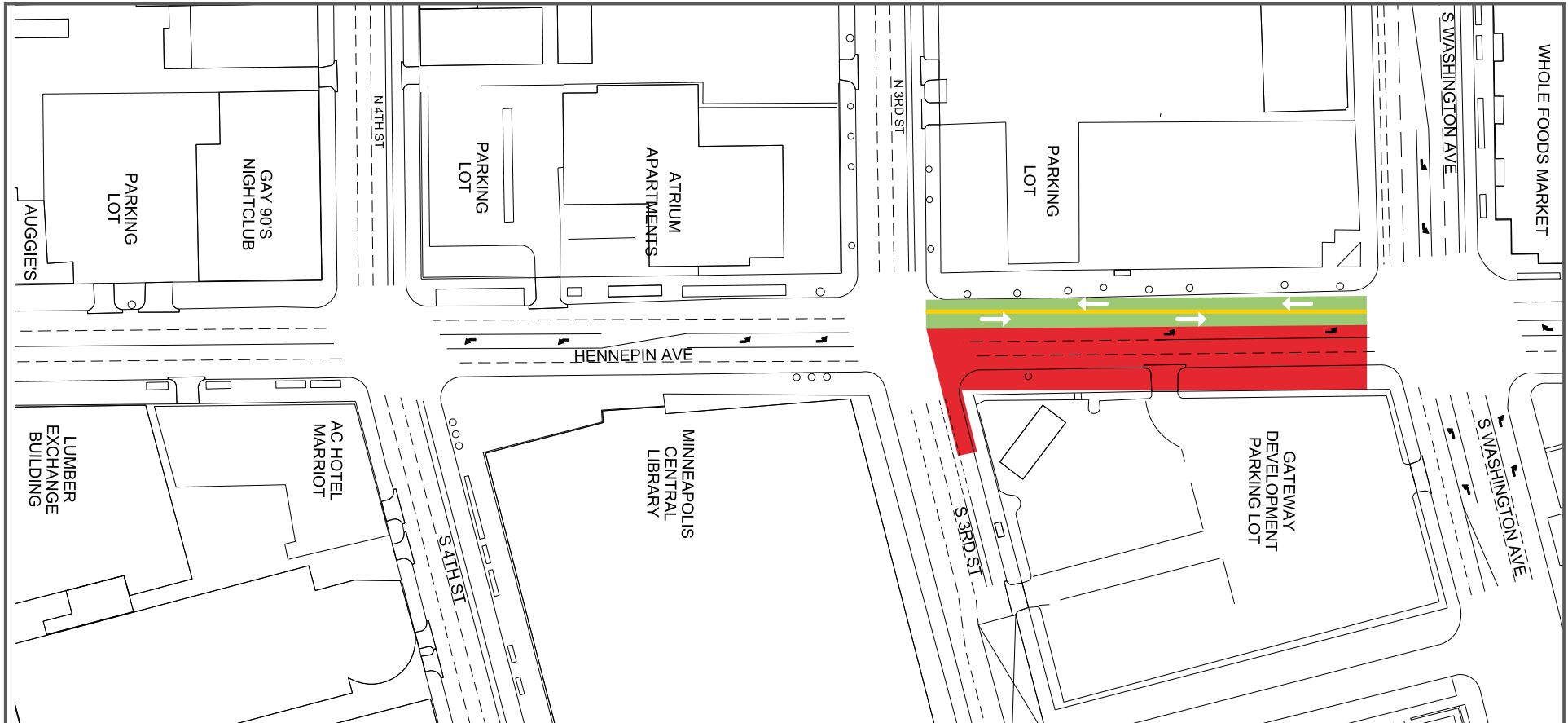
Daytime non-rush hour work zone

Work zone vehicle access maintained

Open travel lanes


Vehicle access - SB Hennepin only

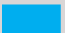
Vehicle Access - NB Hennepin only




4th Street to Washington Avenue


- Lane Closures will vary over the next couple weeks and are subject to change


 Work zone (no vehicle access)
*Sidewalks will be maintained


 Valet and loading zone

 Daytime non-rush hour work zone

 Work zone vehicle access maintained

 Open travel lanes

 Vehicle access - SB Hennepin only

 Vehicle Access - NB Hennepin only