

# Center of Excellence in Newcomer Health Webinar

## Haitian Newcomers: Considerations for Perinatal and Reproductive Health

Tuesday, January 21, 2025

1 – 2:30 p.m. ET | 12 – 1:30 p.m. CT | 11 a.m. – 12:30 p.m. MT | 10 – 11:30 a.m. PT



CENTER OF EXCELLENCE  
IN NEWCOMER HEALTH  
MINNESOTA



MINNESOTA  
MEDICAL  
ASSOCIATION

### REGISTER NOW FOR THIS FREE TRAINING

#### [Haitian Newcomers: Considerations for Perinatal and Reproductive Health](https://events.gcc.teams.microsoft.com/event/74be2566-926a-4c08-94be-1a459f154f70@eb14b046-24c4-4519-8f26-b89c2159828c)

(<https://events.gcc.teams.microsoft.com/event/74be2566-926a-4c08-94be-1a459f154f70@eb14b046-24c4-4519-8f26-b89c2159828c>)

### LEARNING OBJECTIVES

- Describe maternal and reproductive health disparities and concerns among Haitian populations in the U.S., including newcomers
- Discuss barriers faced by the Haitian community that can impact pregnancy care and outcomes
- Identify perinatal health care considerations for Haitian populations in the U.S., including newcomers
- List at least three Haitian cultural and traditional practices to support before, during, and after pregnancy
- Understand current challenges in reproductive health faced by Haitian newcomers

### PRESENTERS



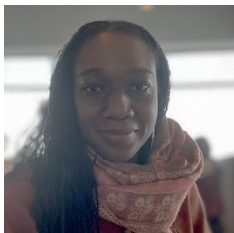
#### **Berenice Kernizan**

By My Side Doula Services Coordinator  
Healthy Start Brooklyn, New York City Department of Health and Mental Hygiene



#### **Dominique Guillaume, MSN, AAHIVE**

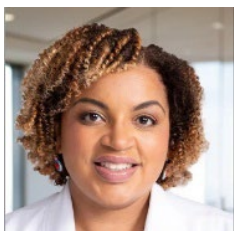
PhD Candidate  
Johns Hopkins School of Nursing



#### **Thamarah Crevecoeur, DrPH, CNM**

Assistant Professor  
Boston University Chobanian & Avedisian School of Medicine

### MODERATOR



#### **Christina Pardo, MD, MPH, FACOG**

Assistant Professor in Obstetrics & Gynecology  
Medical Director, Women's Health Practice  
Weill Cornell Medicine/New York-Presbyterian

## **CME/CONTINUING EDUCATION**

This activity has been planned and implemented in accordance with the accreditation requirements and policies of the Accreditation Council for Continuing Medical Education (ACCME) through the joint providership of the Minnesota Medical Association and Minnesota Department of Health. The Minnesota Medical Association (MMA) is accredited by the ACCME to provide continuing medical education for physicians.

The Minnesota Medical Association designates this live internet activity for a maximum of *1.5 AMA PRA Category 1 Credit(s)*<sup>™</sup>. Physicians should claim only the credit commensurate with the extent of their participation in the activity. Other participants will receive a proof of attendance document from MDH following completion of a post-webinar evaluation and are responsible for determining if this training meets CE criteria for their professional organization.

---

The Center of Excellence in Newcomer Health is supported by NU50CK000563 (MN) from the U.S. Centers for Disease Control and Prevention.

For more information or disclosures, please visit [Center of Excellence in Newcomer Health \(www.health.state.mn.us/communities/rih/coe/index.html\)](http://www.health.state.mn.us/communities/rih/coe/index.html). Contact the Minnesota Department of Health Refugee Health Program at [refugeehealth@state.mn.us](mailto:refugeehealth@state.mn.us) or 651-201-5414 for questions.