

## **Funeral Home / Transport Services Access to Hennepin Healthcare Services Morgue**

On December 7 beginning at 9am, Hennepin Healthcare will be handling morgue services for all deaths occurring at the hospital and Emergency Department that will not require an autopsy at the Hennepin County Medical Examiner's Office. The Hennepin County Medical Examiner will no longer be providing morgue services for Hennepin Healthcare after December 7 except for those decedents who require an ME-ordered autopsy.

Instructions for making removals from the Hennepin Healthcare morgue are below. The location of the morgue is in the Purple Ramp Lower Level at 701 Park Avenue. We ask that all funeral homes make arrangements to pick up individuals when the Decedent Affairs Coordinator is in the office (Monday – Friday 0900-1630). In special circumstances an afterhours pick up may be approved.

Current process should continue to be followed for Death Certificates.

To Access: Take 7<sup>th</sup> St South to the Purple Ramp Entrance, which is on the north side of 7<sup>th</sup> Street. Immediately after you enter the ramp, there is a grey garage sally port. Back up to this garage and press the doorbell intercom to alert Hennepin Healthcare staff of your arrival. You will be asked to identify yourself. Hennepin Healthcare staff will then open the garage door for you to back into. Inside, there is an industrial elevator that staff will release open for you. Take elevator to LL and elevator will open directly into the morgue. Hennepin Healthcare staff is unable to assist with physical transfer of decedents. Please bring appropriate staff to assist with removal.

### **During Business Hours Monday – Friday 0900-1630**

The Decedent Affairs Coordinator will be available to assist with removals. During this timeframe, questions can be directed to the Decedent Affairs Coordinator at 612-248-4539.

### **After Hours Monday – Friday 1630-0900 and weekends**

Approval is needed to make removals during this time. In special circumstances an afterhours pickup may be approved. Contact the Emergency Department Social Worker at 612-275-2791 to make an appointment for special circumstances. Upon arriving for the removal, Hennepin Healthcare Security will be available to assist with accessing the morgue.

Questions?

### **Andrea Hansen-Miller, MSW, LICSW**

Decedent Affairs Program Coordinator

Cell 612-248-4539 | Telmediq Andrea Hansen-Miller | f. 612-873-5122

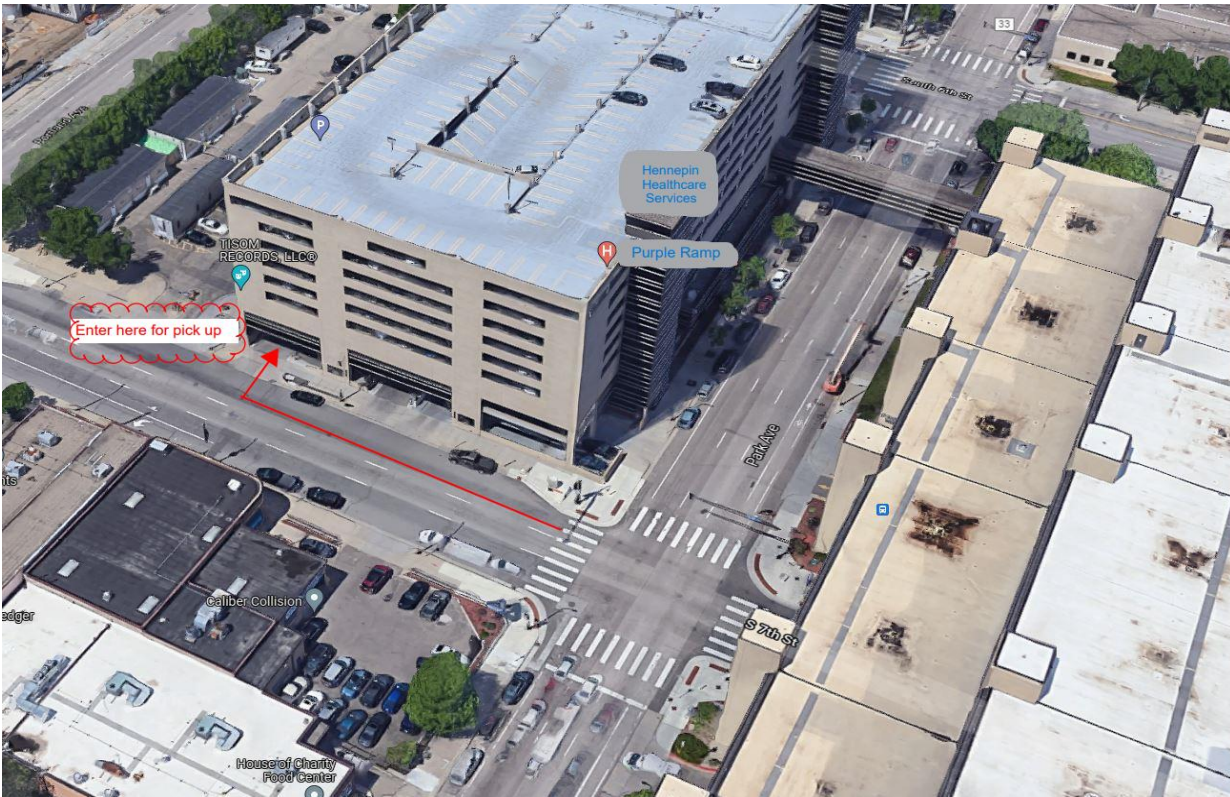
[andrea.hansen-miller@hcmcd.org](mailto:andrea.hansen-miller@hcmcd.org)

Hennepin Healthcare Office of Decedent Affairs

HCMC Purple Ramp, Lower Level

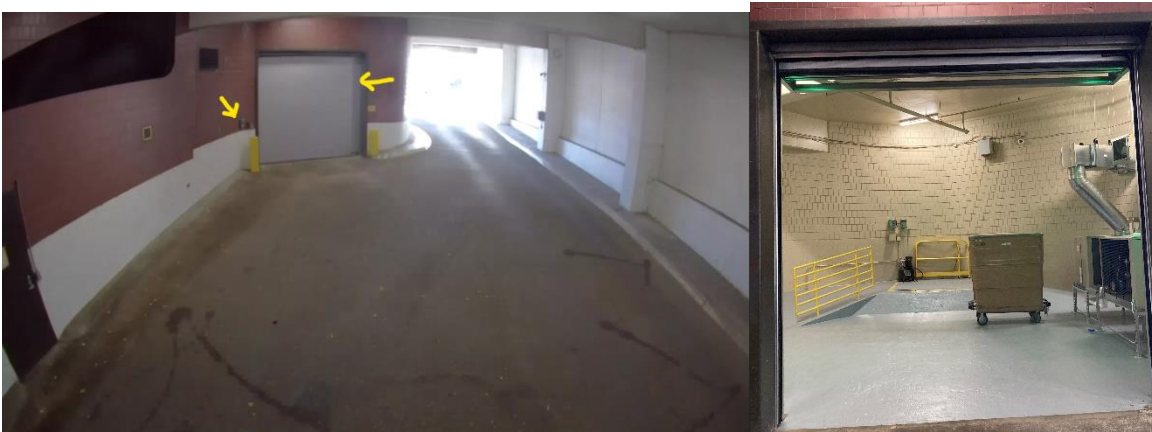
Mailing Address: 730 S 8<sup>th</sup> Street | Minneapolis, MN 55415

Picture below of entrance to the Purple Ramp:



Pictures of Purple Ramp entrance off 7<sup>th</sup> St S. Enter in the main entrance with Hennepin Healthcare Parking Sign. Clearance is 10'6".





Pictures of sally port. First photo arrows indicate how to pull forward and back up to the morgue sally port. Second photo arrows show the gray door where funeral homes will back into and also yellow arrow pointing to doorbell that should be rung upon arrival. Third photo of sally port once opened. Clearance of entrance is 10'6".



Pictures of the service elevator inside sally port. LL is secure, Decedent Affairs Coordinator or Security will assist with getting elevator to LL. Morgue view from elevator.