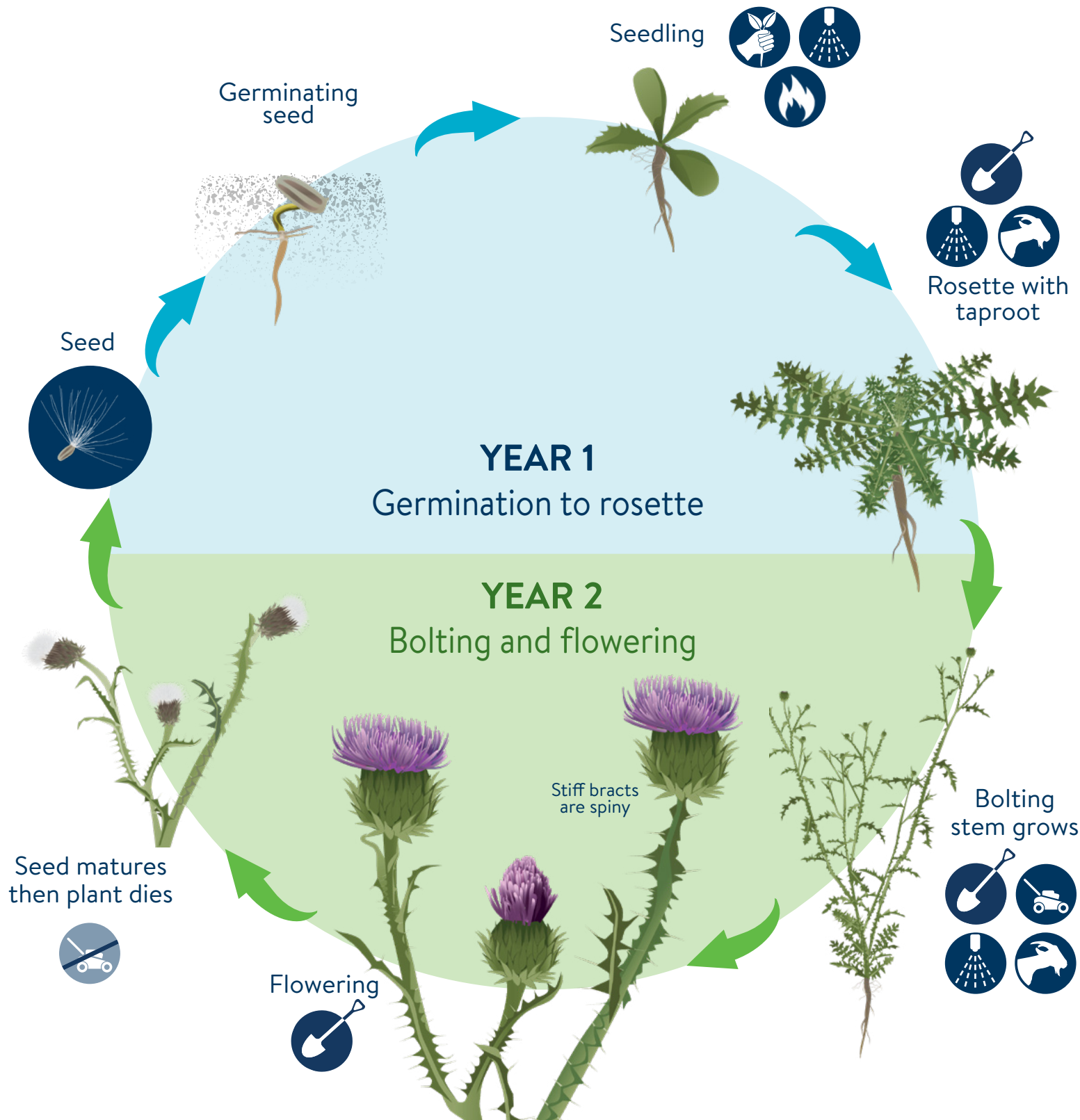


# PLUMELESS THISTLE

*Carduus acanthoides*

## BIENNIAL LIFECYCLE & TREATMENT TIMING

[mda.state.mn.us/weedcontrol](http://mda.state.mn.us/weedcontrol)



### HAND PULL

Remove seedling and root.



### DIG ROOT

Dig out root of small infestations.



### MOW

Mow at least once per year during bud stage.



### FOLIAR SPRAY

Spray after leaf out until bud stage.



### GRAZING

Goats or sheep eat in spring and at bud stage.



### PRESCRIBED FIRE

Burn seedlings and integrate with other methods.



Monitoring and repeated management is necessary for long term control of established infestations.



UNIVERSITY OF MINNESOTA EXTENSION  
Driven to Discover<sup>SM</sup>