

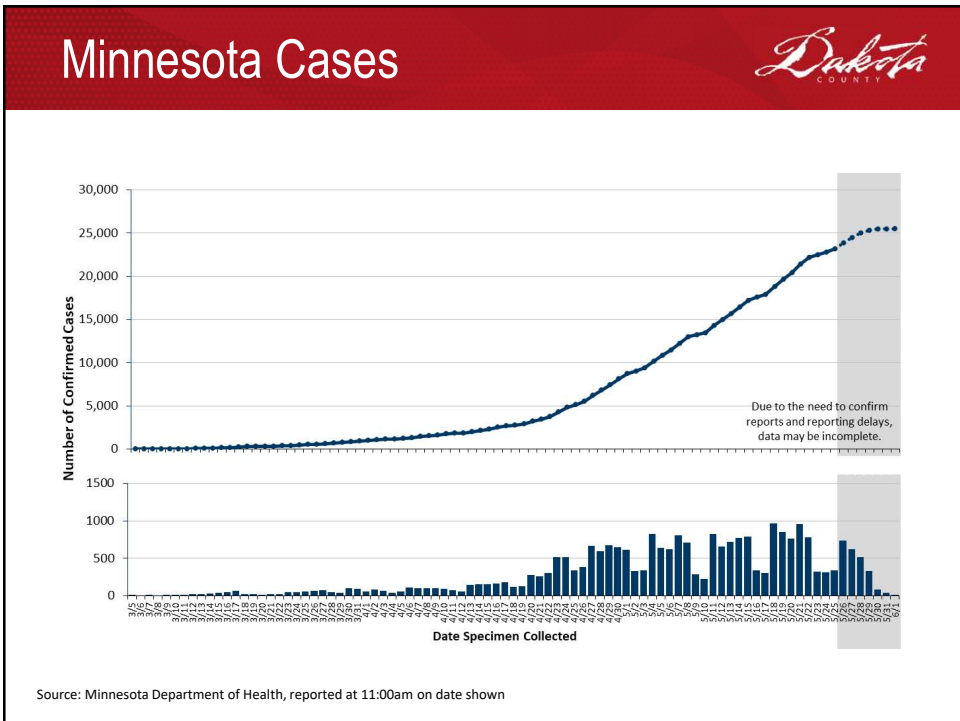
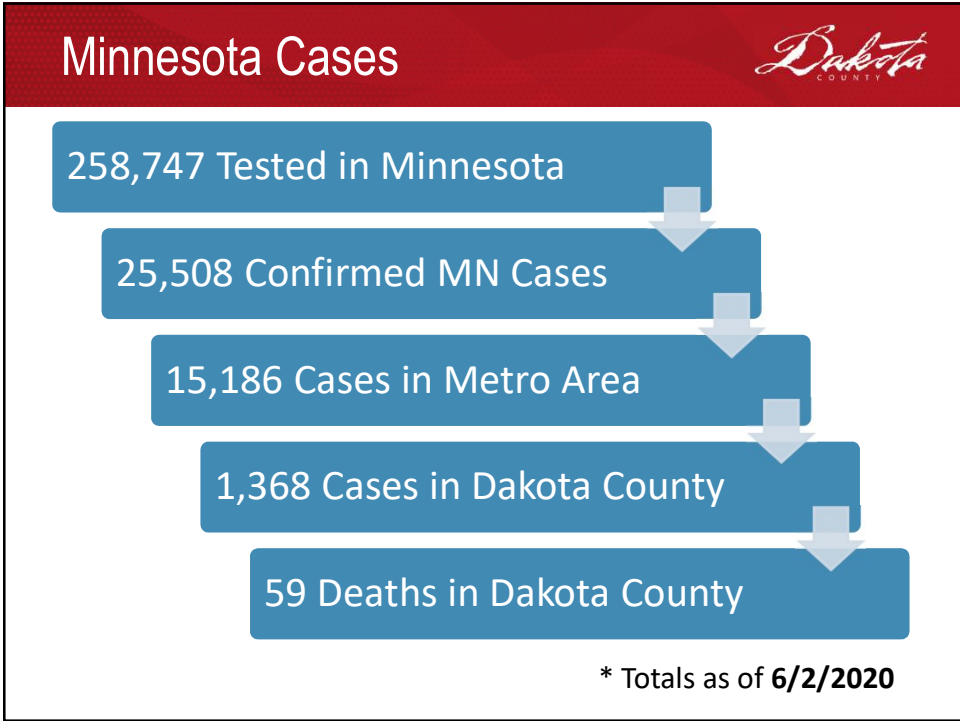


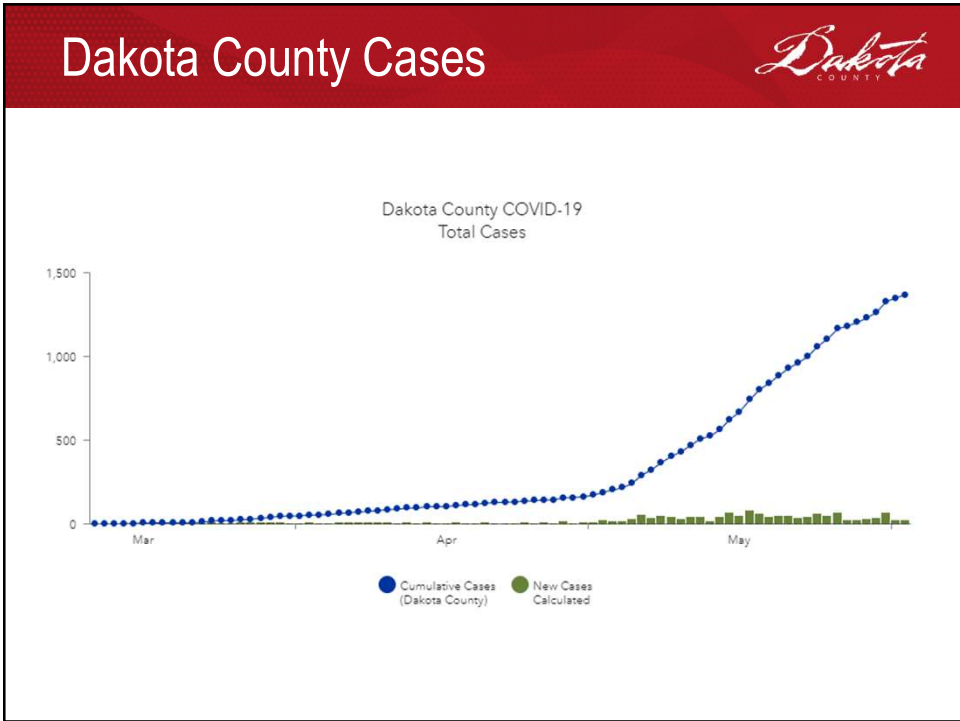
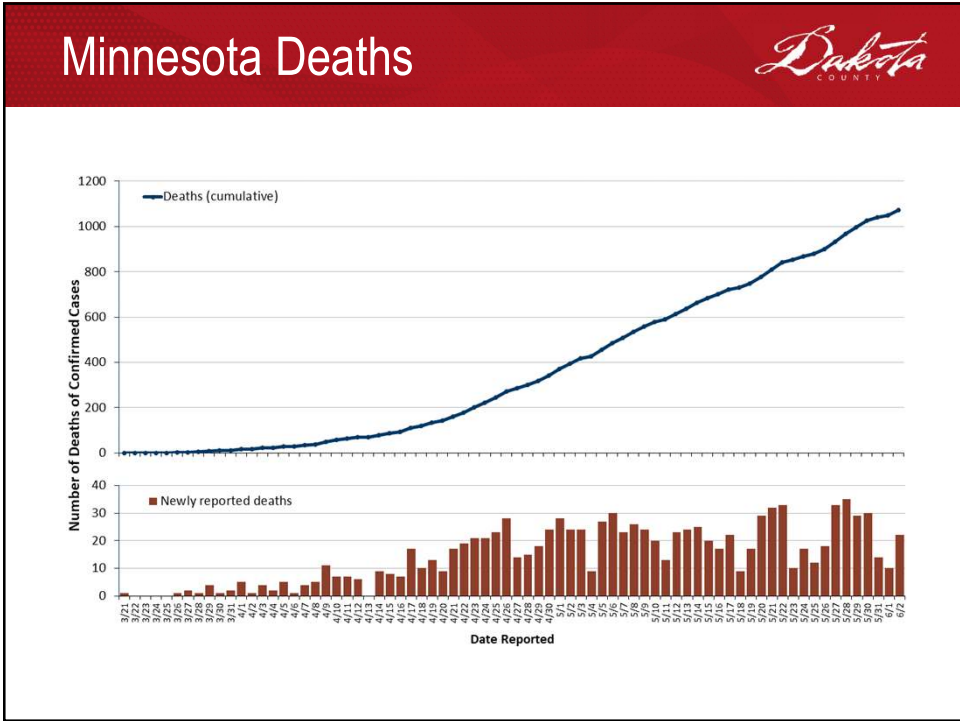
Virtual Delegation Meeting

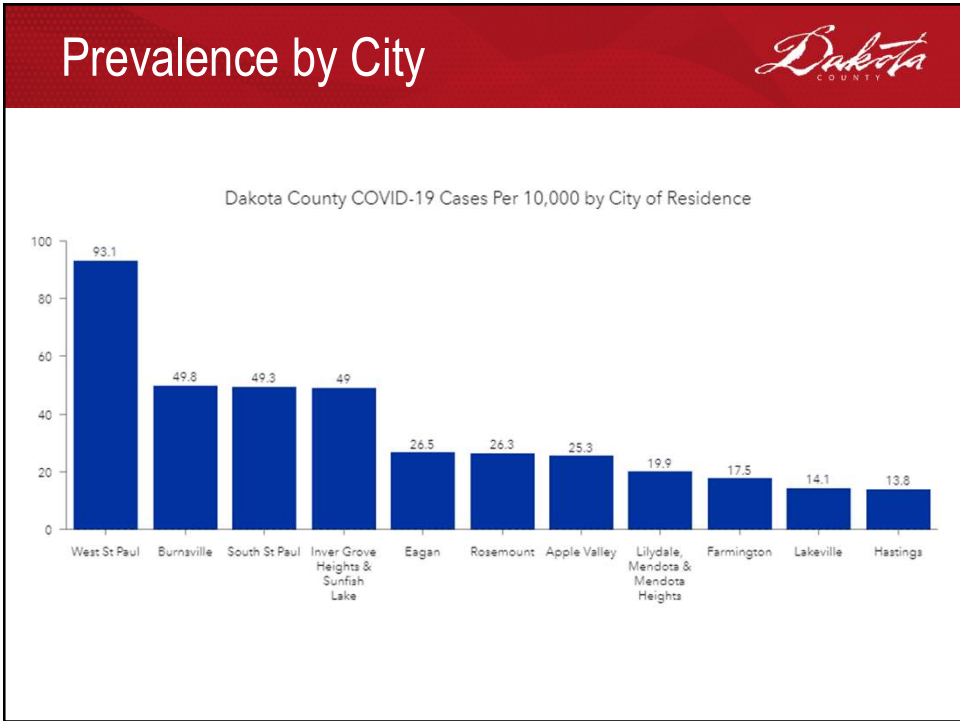
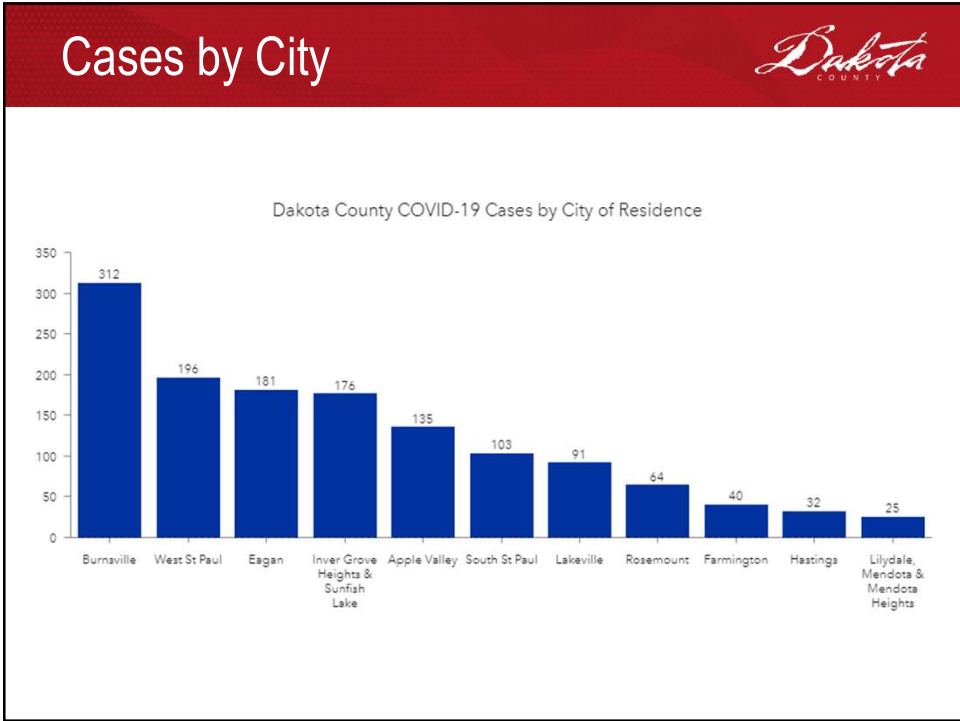
June 3, 2020



COVID-19 Update







Dakota
COUNTY

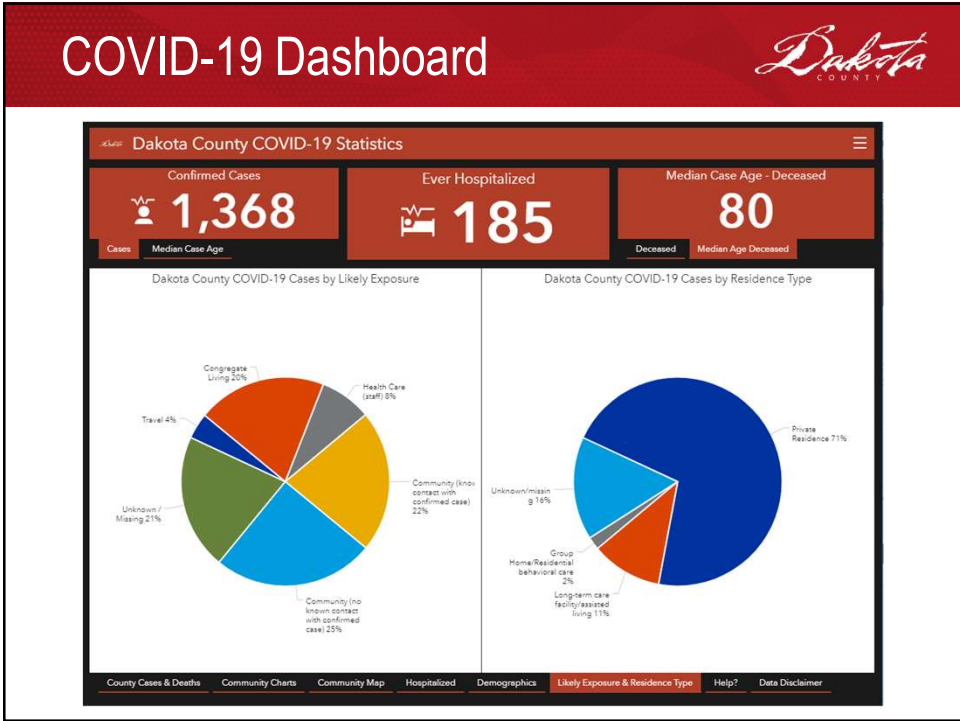
Public Health Updates

- COVID-19 Hotline**
 - Last week, 27 people called the hotline
- Case Investigations and Contact Tracing**
 - To date, over 170 interviews have been conducted by Dakota County staff
 - 12 additional staff were trained last week, bringing the total to 36
- Essential Services**
 - Last week, 26 requests for services and 16 deliveries

Dakota
COUNTY

COVID-19 Dashboard

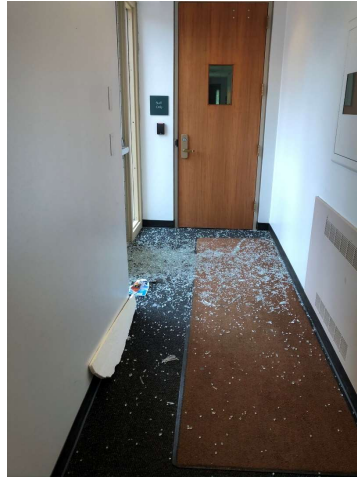
- Pulls most up to date data from MDH daily
- www.DakotaCounty.us



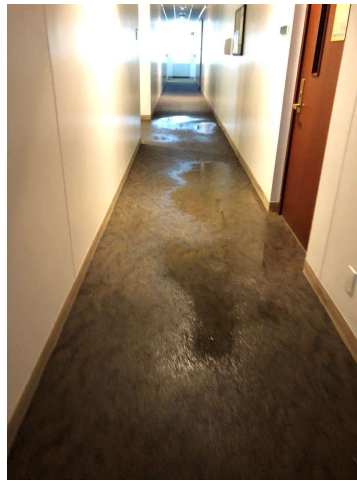
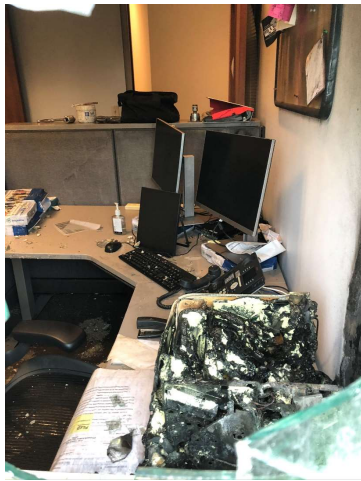
Sheriff's Office Update

Tim Leslie
County Sheriff

Western Service Center Damage



Western Service Center Damage





COVID-19 Impact

Matt Smith
County Manager


COVID-19 Impact



Unemployment Applications (through 5/26/20)

	Applications	% of March Labor Force
Dakota	57,338	23.9%
Hennepin	174,056	24.9%
Ramsey	72,917	25.4%

Data source: <https://public.tableau.com/profile/magda.olson#!/vizhome/UIAppMap/Story1>

COVID-19 Impact			
CY2020	YTD Actuals	Forecast for Remainder of Year	Total YE Forecast
Budgeted Spending (Diverted to COVID-19)	\$5,585,584	\$16,597,522	\$22,183,106
New Unbudgeted Spending on COVID-19	\$400,178	\$4,240,194	\$4,640,372
Total Spending	\$5,985,762	\$20,837,716	\$26,823,478
Projected Revenue Shortfalls			\$5,879,000
Total Projected COVID-19 Impact			\$32,702,478

Service • Integrity • People • Innovation



SMART Center Groundbreaking

Mary Beth Schubert
Director of Communications

SMART Center Groundbreaking



- Open house style (between 10 a.m.–1:00 p.m.)
- Grab a shovel and help us break ground
- Commemorative Video
- Contact Nathan Hanson for details



Legislative Priorities Update

Joe Atkins
Dakota County Commissioner

2020 Capital Investment Priorities *Dakota* COUNTY

- Byllesby Dam – \$9M
- Greenway Safety - \$22.75M
- Veterans Memorial Greenway - \$5M
- Household Hazardous Waste - \$10.44M
- School-area Safety - \$4.62M

Pedestrian Safety & Regional Bicycle Projects Dakota County Stewardship

All Projects Ready and Include Match

Request	Ready	80% Match	Legislative Districts	
River to River	\$2.5M	YES	YES	52B (Hansen)
Mendota to Lebanon Hills	\$4.0M	YES	YES	51B (Richardson), 52B (Richardson)
Mississippi River	\$4.1M	YES	YES	52B (Richardson), 54A (Calkins), 58B (Lugens), 57B (Hunt)
Minnesota River	\$3.94M	YES	YES	51A (Hansen)
Lake Marion	\$2.3M	YES	YES	56A (Larsen), 56B (Larsen), 56C (Larsen)
North Creek	\$2.32M	YES	YES	57A (Barnes), 58B (Richardson)
Veterans Memorial	\$5.0M	YES	YES	51B (Richardson), 52B (Richardson)
Total				\$27.75M

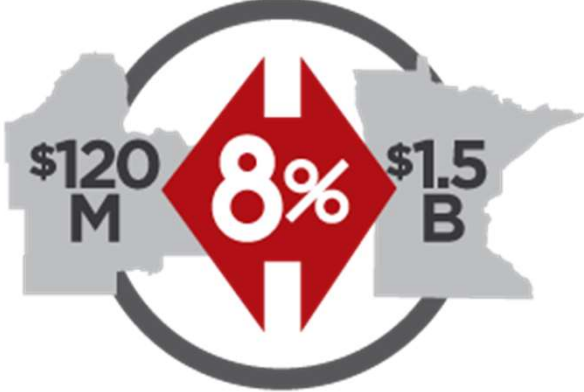

State Legislative Districts

- House Districts
- Senate Districts
- Regional Greenway - Existing
- Regional Greenway - Planned

2019-2020 State Legislators

51	Sen. Jim Carlson (DFL)	56	Sen. Dan D. Hall (R)
51A	Rep. David Meier (DFL)	56A	Rep. Thomas Cornett (DFL)
51B	Rep. Laurie Halverson (DFL)	56B	Rep. Alice Mann (DFL)
52	Sen. Matt D. Kvan (DFL)	57	Sen. Gregory D. Clopton (DFL)
52A	Rep. Rick Hansen (DFL)	57A	Rep. Robert Bennett (DFL)
52B	Rep. Ruth Richardson (DFL)	57B	Rep. John Huot (DFL)
54	Sen. Kara Ingham (DFL)	58	Sen. Matt Cole (DFL)
54A	Rep. Anne Griffin (DFL)	58A	Rep. Jon Karsick (R)
54B	Rep. Tony Jurgens (R)	58B	Rep. Patrick Genshale (R)

Prepared by: Dakota County Planning



Dakota County residents

- Make up 8% of the state's population
- Contribute 8% of the state's revenues



Virtual Delegation Meeting

Thank you for joining us!