

# Environmental education resources

Hennepin County Environment and Energy



# Environmental education resources

[www.hennepin.us/environmentaleducation](http://www.hennepin.us/environmentaleducation)

or

Search: *Hennepin County Environmental Education*

## Environmental education

A wide variety of free environmental education resources, project support and funding is available to organizations working with residents and youth in Hennepin County.

Get the latest updates on environmental education programs and resources, learn about events and training opportunities, and read what others in the field are doing:

- [Subscribe to our Environmental education news](#) monthly update email. See the [most recent edition](#) for an example of the content.
- Join our [Environmental education network Facebook group](#) to collaborate about environmental education and connect with others.

Environment and Energy

[environment@hennepin.us](mailto:environment@hennepin.us)

Phone: 612-348-3777

[Open all](#)

+ Communication resources and print materials

+ Curriculum ideas and activity guides

+ Training, volunteer and citizen science opportunities

+ Education kits, activity supplies and event displays

+ Tours, field trip transportation and presentations

+ Environmental education programs

+ Grants



# Environmental education resources

Available now

- Communications tools
  - Handouts and education materials
  - Newsletter, social media posts, images
  - Educational videos
- Network resources
  - Environmental Education News
  - Environmental Education Network facebook group
  - Networking and training opportunities

Hennepin County Environment and Energy





# Environmental education resources

**Available now**

- Environmental education resources
  - Tree Trek (virtual and outdoor education)
  - Environmental education curriculum/activity guides
- Green event resources



# Environmental education resources

Available in the fall? TBD

- Environmental education kits
- Environmental action supplies
- Field trip buses
- RiverWatch

Unknown timeline

- Tours of county waste facilities

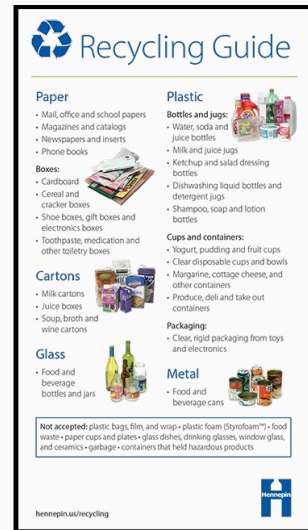
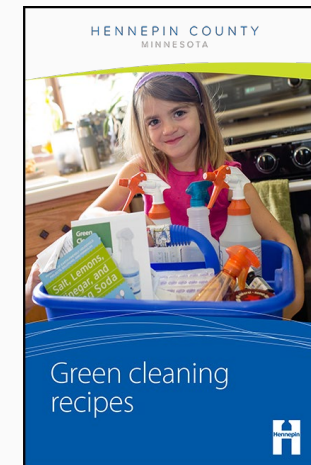




# Handouts and education materials

Available now

- Factsheets and pamphlets
  - Order on-line: [www.hennepin.us/environmentaleducation](http://www.hennepin.us/environmentaleducation)
- Recycling sign order forms
  - [www.hennepin.us/recycling](http://www.hennepin.us/recycling) (signs for home)
  - [www.hennepin.us/businessrecycling](http://www.hennepin.us/businessrecycling) (signs for the office)
  - [www.hennepin.us/schoolrecycling](http://www.hennepin.us/schoolrecycling) (signs for schools)



# Newsletter articles, social media, images

Available now

## Repair tips

- [Article and social media posts \(DOCX\)](#)
- [Fixing a lamp image \(JPG\)](#)
- [Disassembled item image \(JPG\)](#)
- [Disassembling an item image \(JPG\)](#)
- [Mending clothing – image 1 \(JPG\)](#)
- [Mending clothing – image 2 \(JPG\)](#)



# Educational videos



The Hennepin Energy Recovery Center, or HERC, is just one slice of our multi-faceted strategy

Available now

Available on  
our [YouTube channel](#)



Kira Berglund Hi I'm Kira and I work with schools in Hennepin County to help them set up





# Environmental education network resources

Available now

- Newsletters
  - [Environmental Education News](#) monthly email
- Social media
  - [Hennepin County Environmental Education Network](#) on Facebook
  - [@hennepinenviro](#) on Twitter
  - New: [Hennepin Environment on Instagram](#)
- Quarterly networking and educational workshops



# Tree Trek: Virtual and self-guided field trip


Available now

Search: Hennepin County  
Tree Trek

If you would like to experience  
Tree Trek in person, contact the  
camp to reserve a time:

Voyageur Environmental Center  
7000 County Road 15  
Mound, MN 55364  
(952) 472-4581  
<https://voyageur.bgc-tc.org/>

Hennepin County



## Tree Trek Nature Trail

Welcome to Tree trek!

Tree Trek is an interactive way to learn about the trees, ecology, and natural history of the big woods. You can traverse Tree Trek online through this interactive story map AND you can explore Tree Trek outside by visiting the Voyager Boys and Girls Camp in Mound, MN.

To navigate Tree Trek through the online story map, use the arrows and dots on the left side of the screen to move to various points of interest describing trees and other natural features. For each point of interest, read the text to learn about a specific tree or feature and explore provided links to learn more through videos and additional resources. Some links are provided at the end of each station and others are embedded in the text as underlined words. You can zoom in and out of the map by clicking on the "+" and "-" signs located in the upper left hand corner of the map image. You can also expand the legend by clicking on the legend box in the upper right corner of the map image.


If you would like to experience Tree Trek in person at the Voyager camp please contact the camp to reserve a time.

Camp Contact:  
Mike McArthur (Camp Director)

+

Home

-





# Environmental education curriculum

Available now

## Activity Guides

- Air, energy & climate change
- Recycling
- Reducing waste, including food waste
- Toxicity & hazardous waste
- Water

[www.hennepin.us/environmentaleducation](http://www.hennepin.us/environmentaleducation)



# Virtual recycling education kit

Available now

A screenshot of a webpage titled "Beginner BINGO items". The page has a dark blue header with the title in white. Below the header, there is a section titled "Pick items in random order:" followed by a list of items with checkboxes: Aluminum, Plastic, Paper, Cardboard, Milk carton, Soda bottle, Cereal box, and Juice box. To the right of this list, there is a "Contacts" section for the Environment and Energy Department, Environmental Education, with office phone 612-348-3777 and email environment@hennepin.us. Below that is a "Website" section with the URL hennepin.us/environmentaleducation.

Beginner BINGO items

Pick items in random order:

- ☐ Aluminum
- ☐ Plastic
- ☐ Paper
- ☐ Cardboard
- ☐ Milk carton
- ☐ Soda bottle
- ☐ Cereal box
- ☐ Juice box

**Contacts**  
Environment and Energy Department  
Environmental Education  
Office: 612-348-3777  
environment@hennepin.us

**Website**  
hennepin.us/environmentaleducation

## Virtual recycling education kit

Use these presentations and activities to create your own education kit to teach participants about recycling and also go through common items that are and are not recyclable in Hennepin County. Be sure to utilize our recycling guide as an additional education tool.

- [Recycling guide \(PDF\)](#)

### Recycling presentations

Use these presentations during virtual meetings or lessons to teach participants background information about recycling and also go through common items that are and are not recyclable.

- [Recycling presentation for elementary age youth \(PDF\)](#)  
18 slides with presenter notes
- [Recycling presentation for middle school age youth \(PDF\)](#)  
19 slides with presenter notes
- [Recycling presentation for high school age youth and adults \(PDF\)](#)  
12 slides with presenter notes

### Recycling BINGO activity

Have some fun with this great BINGO game! Cards are customized by Hennepin County to feature both items that are recyclable and the natural resources they come from. There are beginning and advanced versions of this game.

### Recycling BINGO materials

- [Virtual BINGO instructions \(PDF\)](#)
- Beginner players: [caller sheet \(PDF\)](#) and [BINGO card \(PDF\)](#)
- Advanced players: [caller sheet \(PDF\)](#) and [BINGO card \(PDF\)](#)



# County green event resources

## Available now

- Portable recycling bins
- Green event planning guide
- Communication tools
- Signage

Free\* event recycling containers available through a partnership between the county, Brooklyn Park and Hopkins.

City of Minneapolis rental fee includes delivery of carts and pick up and disposal of materials collected in Minneapolis.

More info at: [www.hennepin.us/eventrecycling](http://www.hennepin.us/eventrecycling)

\* Damage deposit required



# Post in the chat

Let us know what resources  
you have been using





Patience Caso

[Patience.Caso@hennepin.us](mailto:Patience.Caso@hennepin.us)

612-348-9532

Environmental education and outreach unit  
Environment and Energy Department

Hennepin County Environment and Energy

