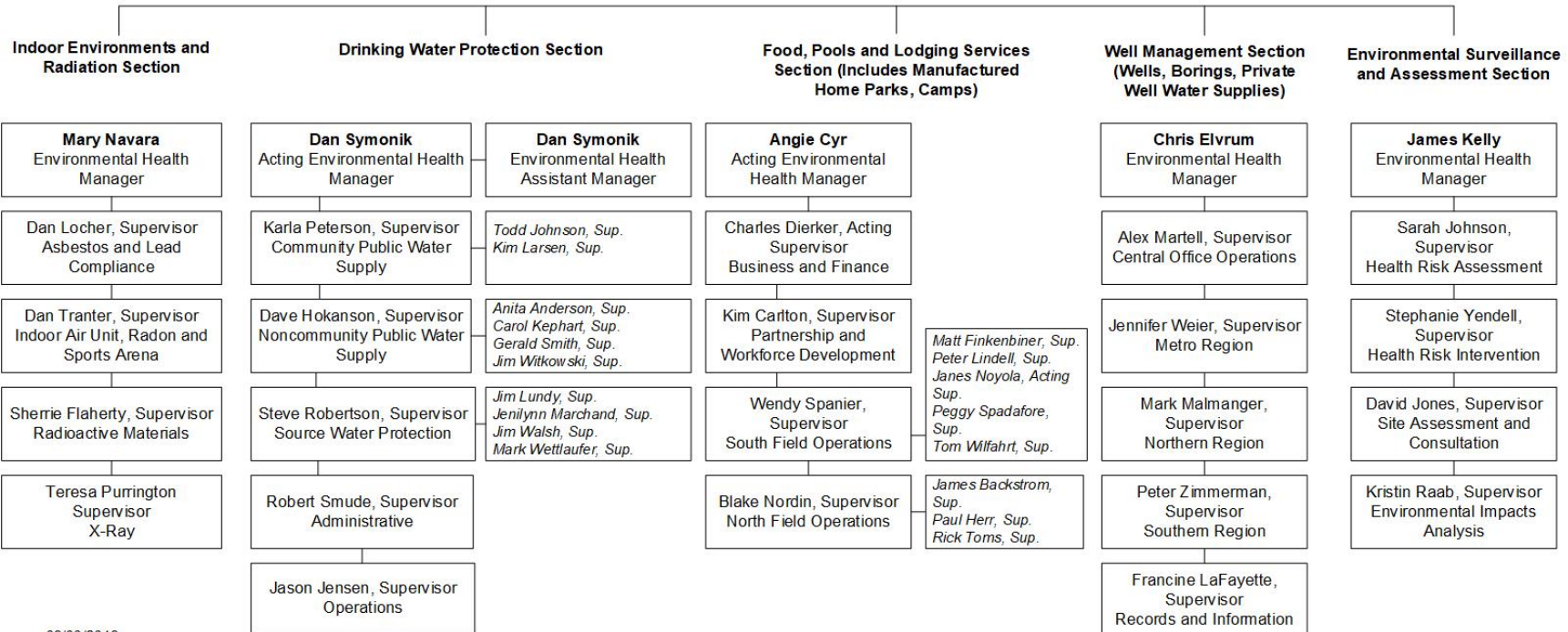




Environmental Health Division
Minnesota Department of Health



EH Operations Center (includes MN Environmental Laboratory Accreditation Program)



Environmental Health Division

Organizational Chart

This is the org chart for the Environmental Health Division leadership of the Minnesota Department of Health.

Director's Office

Tom Hogan is the Division Director and Steven Diaz is the Acting Assistant Division Director with five Section Managers reporting directly to them. The Manager of the EH Operations Center reports to the Assistant Division Director.

Indoor Environments and Radiation Section

Mary Navara, Environmental Health Manager, supervises the Indoor Environments and Radiation Section. Four unit supervisors report directly to her:

1. Dan Locher, Supervisor of the Asbestos and Lead Compliance Unit
2. Dan Tranter, Supervisor of the Indoor Air Unit, Radon, and Sports Arenas Unit
3. Sherrie Flaherty, Supervisor of the Radioactive Materials Unit
4. Teresa Purrington, Supervisor of the X-Ray Unit

Drinking Water Protection Section

Dan Symonik, Acting Environmental Health Manager, supervises the Drinking Water Protection Section. Dan Symonik is also the Assistant Environmental Health Manager. Five unit supervisors report directly to them:

1. Karla Peterson, Supervisor of the Community Public Water Supply Unit. Two program supervisors report directly to Karla:
 - Kim Larsen, Supervisor
 - Todd Johnson, Supervisor
2. Dave Hokanson, Supervisor of the Noncommunity Public Water Supply Unit. Five program supervisors report directly to Dave:
 - Anita Anderson, Supervisor
 - Carol Kephart, Supervisor
 - Gerald Smith, Supervisor
 - Jim Witkowski, Supervisor

3. Steve Robertson, Supervisor of the Source Water Protection Unit. Four program supervisors report directly to Steve:
 - Jim Lundy, Supervisor
 - Jenilynn Marchand, Supervisor
 - Jim Walsh, Supervisor
 - Mark Wettlaufer, Supervisor
4. Robert Smude, Supervisor of the Administrative Unit
5. Jason Jensen, Supervisor of the Operations

Food, Pools and Lodging Services Section (includes Manufactured Home Parks, Camps)

Angie Cyr, Acting Environmental Health Manager, supervises the Food, Pools and Lodging Services Section (includes Manufactured Home Parks, Camps). Four unit supervisors report directly to the Section Manager.

1. Charles Dierker, Acting Supervisor of Business and Finance Unit
2. Kim Carlton, Supervisor of the Partnership and Workforce Development Unit
3. Wendy Spanier, Supervisor of the South Field Operations. Four program supervisors report directly to Wendy:
 - Matt Finkenbiner, Supervisor
 - Peter Lindell, Supervisor
 - James Noyola, Acting Supervisor
 - Peggy Spadafore, Supervisor
 - Tom Wilfahrt, Supervisor
4. Blake Nordin, Supervisor of the North Field Operations. Three program supervisors report directly to Blake:
 - James Backstrom, Supervisor
 - Paul Herr, Supervisor
 - Rick Toms, Supervisor

Well Management Section (wells, borings, private well water supplies)

Chris Elvrum, Environmental Health Manager, supervises the Well Management Section (wells, borings, private well water supplies). Two unit supervisors and three regional supervisors report directly to him:

1. Francine LaFayette, Supervisor of the Records and Information Unit
2. Mark Malmanger, Supervisor of the Northern Region
3. Alex Martell, Supervisor of the Central Office Operations Unit
4. Jennifer Weier, Supervisor of the Metro Region

ENVIRONMENTAL HEALTH DIVISION

5. Peter Zimmerman, Supervisor of the Southern Region

Environmental Surveillance and Assessment Section

James Kelly, Environmental Health Manager, supervises the Environmental Surveillance and Assessment Section. Four unit supervisors report directly to him:

1. Sarah Johnson, Supervisor of the Health Risk Assessment Unit
2. Stephanie Yendell, Supervisor of the Health Risk Intervention Unit
3. David Jones, Supervisor of the Site Assessment and Consultation Unit
4. Kristin Raab, Supervisor of the Environmental Impact Analysis Unit

EH Operations Center (including Minnesota Environmental Laboratory Accreditation Program)

Justine Greene, Environmental Health Manager, supervises the EH Operations Center.

Environmental Health Division
Minnesota Department of Health
PO Box 64975
St. Paul, MN 55164-0975
651-201-4571
www.health.state.mn.us

08/06/2018

To obtain this information in a different format, call: 651-201-4571. Printed on recycled paper.