

COVID-19 Information and Resources for **Growers and Seasonal Workers**

CORONAVIRUS (COVID-19)

The Ottawa County Department of Public Health (OCDPH) is monitoring the COVID-19 situation and working closely with the Michigan Department of Health and Human Services (MDHHS), healthcare providers, and with multiple sectors within our community.

What is Coronavirus 2019?

A respiratory illness caused by a new Coronavirus (Covid-19).

Description of symptoms: Cough, fever, and shortness of breath.

How does the virus spread?

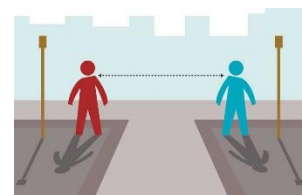
Mainly person-to-person spread between individuals within about 6' of one another. When an infected person coughs or sneezes, respiratory droplets are produced and can be transmitted by inhaling, touching an item contaminated with the virus and then rubbing your eyes, touching your mouth, or preparing food

Prevention

Hand hygiene: Wash hands often with soap and water and for at least 20 seconds—the time it takes to sing the *Happy Birthday* song or la canción de *Feliz Cumpleaños*.

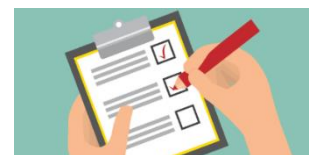


Social Distancing: maintain a distance of six feet (1.83 meters) or more between people, and minimize the number of people in a working or living space.



Evaluate how you can promote social distancing during

- Planting
- Harvesting
- Greenhouse maintenance
- Transporting workers
- Clock-in and clock-out
- Meal and break times
- Housing assignments



In need of hand sanitizer?

Check out a few local businesses who are responding to this need:

[Coppercraft Distillery](#)

[New Holland Brewing Company](#)

Interested in adding portable hand washing stations to your facility?

Reach out to a portable rental company such as [Kerkstra Services](#)

Personal Protective Equipment (PPE): such as gloves, gowns, and masks work best in combination with other prevention measures such as hand washing and social distancing. If PPE is not normally required for the assigned job

function, still consider offering some PPE to your employees.

Visit [Find the Helpers](#) to request homemade masks. This national portal is connected to a [local group](#) here in West Michigan.

Facility and equipment cleaning

Cleaning and disinfecting frequently touched surfaces is an easy way to prevent the spread of bacteria and viruses. Ensure your cleaning solutions meet the [EPA's criteria](#) for use against SARS-CoV-2, the virus that causes COVID-19.



Everyday Steps, Steps When Someone is Sick, and Considerations for Employers

[Cleaning and Disinfecting Your Facility](#)

Planning

Screen employees for signs and symptoms daily

- [Self Checker](#)
- [Example screening tool enclosed](#) (see last page)

Symptoms of CORONAVIRUS (COVID-19)



Fever Shortness of breath Cough

If someone is sick or has symptoms

- Advise the employee to get tested
- Send employee home to self-quarantine
 - Quarantine separates and restricts the movement of people who were exposed to a contagious disease to see if they become sick.
- The employee should self-monitor for worsening symptoms and seek medical care if needed

Guidance for Businesses

[Interim Guidance for Businesses and Employers to Plan and Respond to Coronavirus Disease 2019 \(COVID-19\)](#)

Rights for Agricultural Workers – Stay Safe at Work

[English](#) | [Spanish](#)

Need Testing?

Holland Hospital:
(616) 394-2080

North Ottawa Community Hospital:
(616) 935-7810

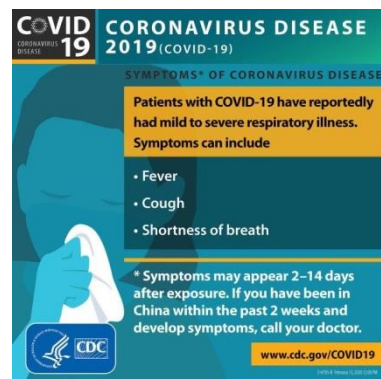
Spectrum Health:
(616) 391-2380

Call your doctor

If someone tests positive

- Isolate
 - Isolation separates sick people with a contagious disease from people who are not sick.
- Someone from the local health department will be in contact with the individual

[When to release from isolation](#)
[Exposure Guide](#)



Will my workplace stay open when many businesses are closed because of Coronavirus?

Yes, Michigan is allowing "essential" components of the Michigan food and agriculture sector to continue operating. This means that farmworkers are deemed "essential"

What if I get sick or injured?

Report it to your supervisors and stay at home or at your migrant camp. Call your doctor or clinic before you get medical care. Get care if you feel worse or you think it's an emergency. If you get sick or injured as result of performing your work, you have a right to workers compensation insurance to cover any medical costs.

What should my employer be doing to make sure my workplace is safe from Coronavirus?

The law requires your employer to make sure there are no known health and safety hazards.

Your employer should:

- Make and implement a plan for the job tasks and risks specific to your work environment.
- Increase physical distance between workers to at least 6 feet while at work.
- Separate workers by off-setting shift hours or days.
- Minimize sharing tools or equipment and make sure they are routinely cleaned and disinfected.
- Encourage workers who are sick to stay home; not require a doctor's note for respiratory illnesses.
- Have flexible sick leave policies including to care for sick family members.
- Provide clean drinking water and single use cups, clean toilets and a place to wash your hands with soap, near your worksite and allow you time to use them.

What if I am at higher risk of COVID-19?

More consideration should be taken if you are at higher risk of COVID-19 illness because of your age, medical conditions, or you are pregnant.

Tell your employer of anything that puts you at higher risk and work with them to change potentially dangerous or unhealthy conditions, or see if another work assignment may alleviate added risk.

Filing a Health and Safety Complaint

MIOASHA investigates health and safety complaints in Michigan. File as soon as possible.

If it is urgent, make your complaint by Phone: 800-866-4374

Otherwise send your complaint by mail, fax, or online:

Mail: MIOASHA **Fax:** 517-284-7755 **Online:** [click here](#)
P.O. Box 30644
Lansing, MI 48909

Michigan Immigrant's Rights Center
[English](#) | [Spanish](#)



Navigating Unemployment

There are several “immigrant benefits” or statuses that may qualify someone for unemployment insurance such as Deferred Action for Childhood Arrivals (DACA), Temporary Protected Status (TPS), asylees, refugees, parolees, Special Immigrant Juvenile Status (SIJS) withholding of removal, VAWA self-petitioners.

If you have TPS, DACA, SIJS, you can still apply for unemployment in Michigan.

However, you need to show proof of your employment authorization when you apply and meet the other eligibility requirements. These include:

- Showing proof of your wages during the work periods under review
- Showing that you lost your job for COVID-19 related reasons or through no fault of your own.

If you are an immigrant and unsure about our eligibility for unemployment insurance contact MIRC’s employment hotline at **800-968-4046**

Additional resources

Ottawa County Department of Public Health | [COVID-19 Response](#) | [Ottawa Food](#)

Ottawa County Resource List | [English](#) | [Spanish](#)

Coronavirus | [CDC.gov](#) | [Michigan.gov](#)

Regional Resources | [InterCare](#) | [Allegan, Barry and Ottawa Migrant Council](#)

English | [Prevent Getting Sick](#) | [Stop the Spread](#) | [Cloth Face Coverings](#) | [Spectrum Health Resource Center](#) | [Wash Your Hands](#) | [Living in Same House](#)

Spanish | [Lo que Necesita Saber](#) | [Detenga la Propagación](#) | [Cubierta de Tela](#) | [Spectrum Health Centro de Recursos](#) | [Lávate Las Manos](#) | [Familias en Misma Casa](#)

For questions visit www.miottawa.org/mihealth or contact the Ottawa County Dept. of Public Health at 616.396.5266.

Resources and information: cdc.gov, michigan.gov, immigrationadvocates.org, michiganimmigrant.org, spectrumhealth.org

Screening for COVID-19 Risk

Company Name: _____ Date: ___/___/___

Employee Name: _____ Time In: ___:___

Have you experienced any of the following in the past 24 hours:

Fever (100.4 F + or felt feverish)	<input type="checkbox"/> Yes <input type="checkbox"/> No
Shortness of breath	<input type="checkbox"/> Yes <input type="checkbox"/> No
Cough (new onset cough or worsening cough)	<input type="checkbox"/> Yes <input type="checkbox"/> No
Sore throat	<input type="checkbox"/> Yes <input type="checkbox"/> No
Severe headache	<input type="checkbox"/> Yes <input type="checkbox"/> No
Chills	<input type="checkbox"/> Yes <input type="checkbox"/> No
Muscle pain	<input type="checkbox"/> Yes <input type="checkbox"/> No
Loss of taste or smell	<input type="checkbox"/> Yes <input type="checkbox"/> No

In the past 14 days:

Household member who tested positive for COVID-19	<input type="checkbox"/> Yes <input type="checkbox"/> No
Contact with someone exhibiting any of these symptoms	<input type="checkbox"/> Yes <input type="checkbox"/> No

**** In some instances, people may have a sore throat, severe headache, chills, muscle pain, or loss of taste or smell.**

If you answer **“yes”** to any of the symptoms listed above, or your temperature is **100.4 F or higher**, please do not go into work.

- Isolate yourself at home
- *Get tested* (Contact your doctor or call one of the following testing sites)

For questions visit www.miottawa.org/mihealth or contact the Ottawa County Department of Public Health at 616.396.5266.

Need Testing?

Holland Hospital:
(616) 394-2080

North Ottawa Community Hospital:
(616) 935-7810

Spectrum Health:
(616) 391-2380

Call your doctor