

# Maine Weekly Influenza Surveillance Report

April 13, 2021

For MMWR week 14 (ending 4/10/2021)

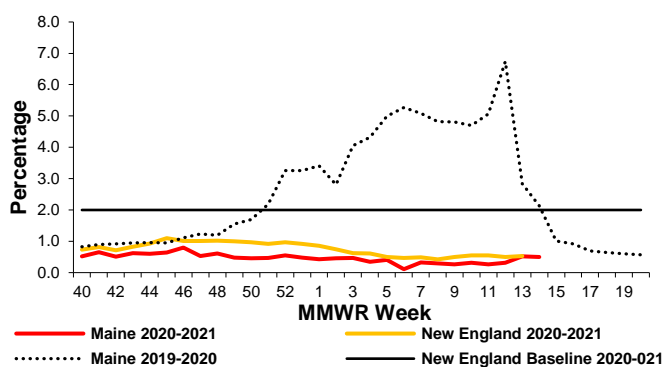


## Geographic Spread: Sporadic

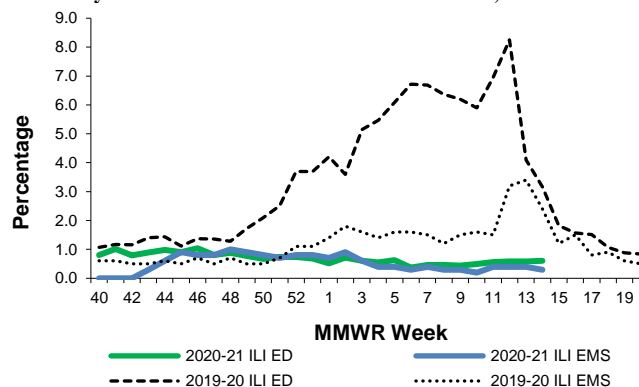
### Surveillance Information – Maine, 2020-2021 Influenza Season

- Number of ILINet Providers reporting: 47
  - % of visits for Influenza-Like Illness (ILI): 0.50
- Syndromic Surveillance
  - % of Emergency Room visits for ILI: 0.6
  - % of Emergency Medical Services (EMS) runs for ILI: 0.3

Outpatient Visits for ILI – Maine, 2019-21



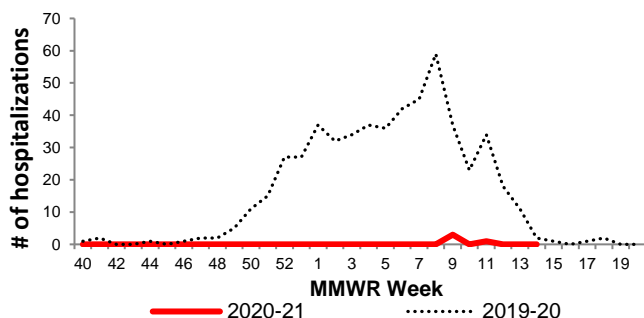
Syndromic Surveillance data for ILI – Maine, 2019-21



### Influenza Hospitalizations

- # of hospitalizations: 0

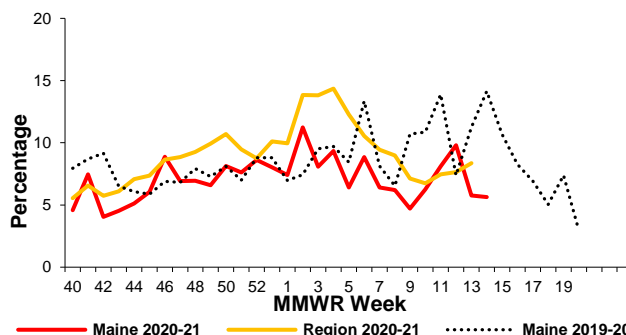
Influenza Hospitalizations – Maine, 2019-21



### Pneumonia and Influenza (P&I) Deaths

- % of deaths due to P&I: 5.6
- # influenza deaths reported this week: 0
- Total influenza deaths this season: 0

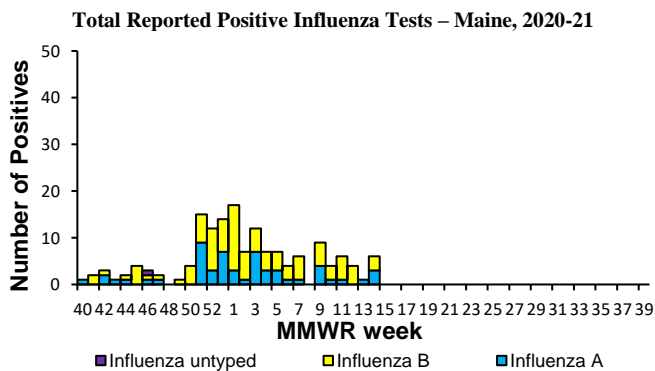
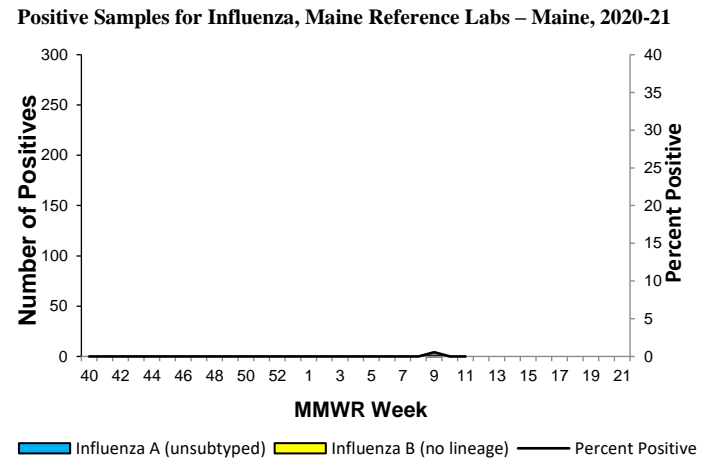
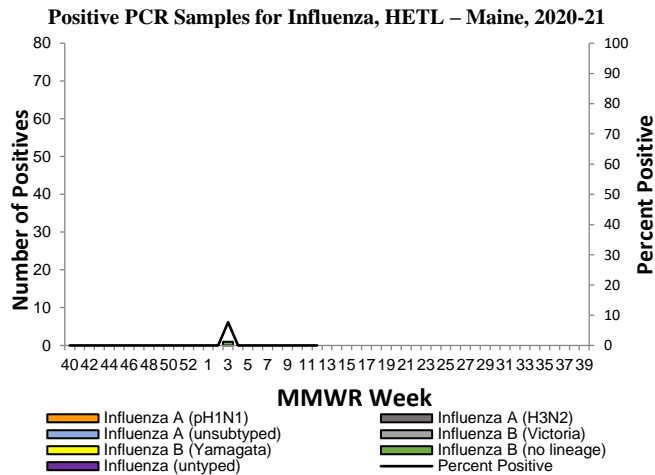
Deaths Attributable to P&I – Maine, 2019-21



\*This number represents the number of individuals who had influenza specifically listed on their death certificate. This is likely an underrepresentation of the true burden, as many influenza-associated deaths are due to secondary infections. This is why Maine CDC reports Pneumonia and Influenza (P&I) deaths.

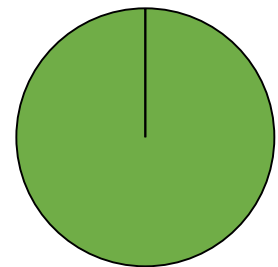
## Lab Data – Maine, 2020-2021 Influenza Season

- # of samples tested at HETL: 0
  - # positive: 0
  - % positive: 0
- # of samples tested at Maine Reference Labs: 161
  - # positive: 0
  - % positive: 0
- # of samples positive by rapid antigen test: 6



## Cumulative Influenza Positive Tests by Strain, HETL – Maine, 2020-21

- Influenza A (pH1N1)
- Influenza A (H3N2)
- Influenza A (unsubtyped)
- Influenza B (Victoria)
- Influenza B (Yamagata)
- Influenza B (no lineage)
- Influenza (untyped)



## Antiviral Resistance – Maine, 2020-21 Influenza Season

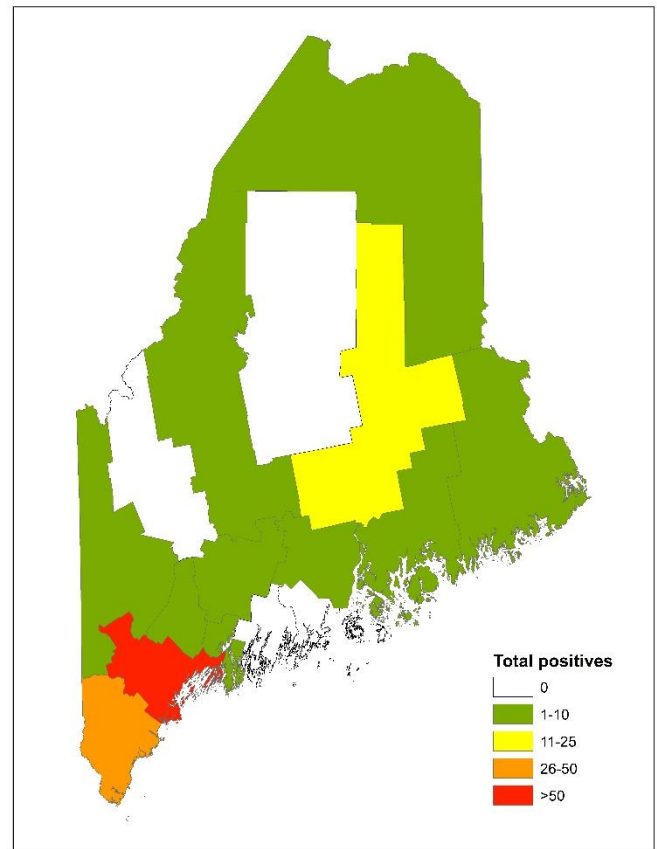
- Due to COVID-19 testing demands, pyrosequencing for antiviral resistance of influenza viruses will not be performed by HETL during the 2020-2021 influenza season. U.S. CDC will continue to perform pyrosequencing at a national level.

## Geographic Distribution of Lab Tests, Maine 2020-21\*

County	Positive labs		Hospitalizations	
	Tested this week	Total	New this week	Total
Androscoggin	0	8	0	0
Aroostook	1	6	0	0
Cumberland	1	72	0	0
Franklin	0	0	0	0
Hancock	1	8	0	0
Kennebec	0	4	0	0
Knox	0	0	0	0
Lincoln	0	0	0	0
Oxford	0	1	0	0
Penobscot	1	16	0	2
Piscataquis	0	0	0	0
Sagadahoc	0	2	0	0
Somerset	0	2	0	0
Waldo	0	4	0	0
Washington	1	2	0	1
York	1	35	0	1
<b>Total</b>	<b>6</b>	<b>160</b>	<b>0</b>	<b>4</b>

\*Only reported PCR, culture, and rapid antigen tests are included in the chart and map.

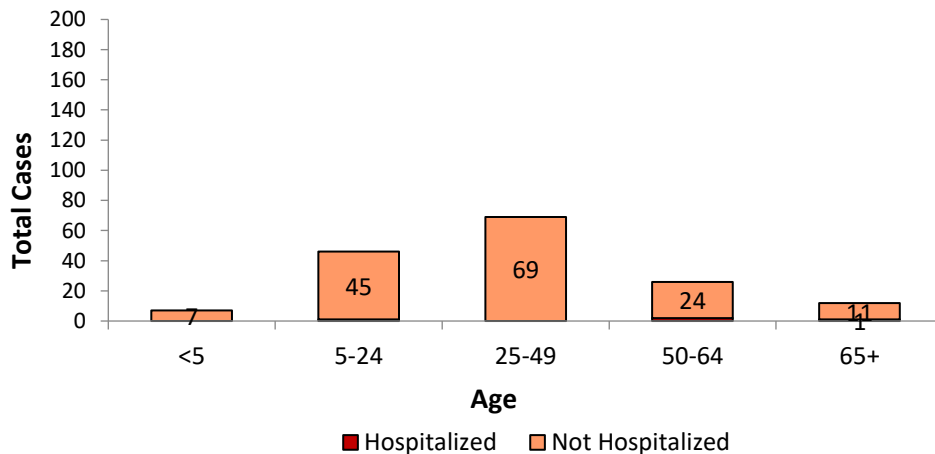
## Positive Influenza Tests, Maine 2020-21



## Age Information – Maine, 2020-21 Influenza Season

	Cases	Hospitalizations	Deaths
Minimum Age	0.6	18	NA
Mean Age	35	56	NA
Maximum Age	86	86	NA

## Positive Influenza Tests by Age and Hospitalization Status – Maine, 2020-21



*All data is preliminary and subject to change*

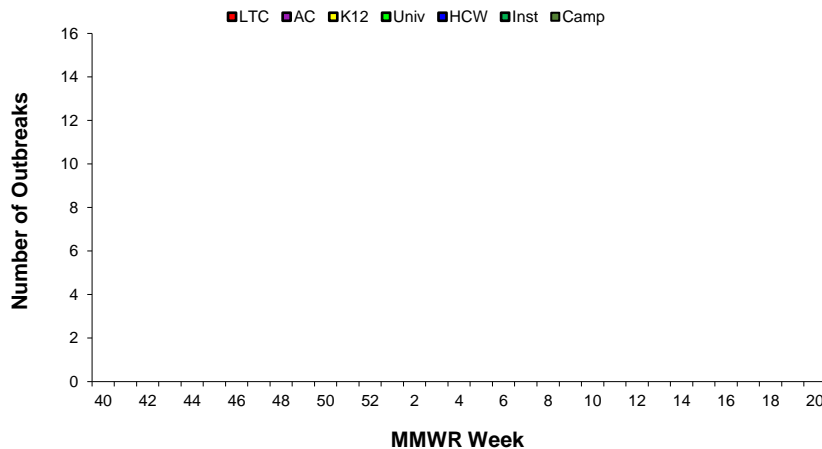
### Antigenic Characterization (Vaccine Strain Match)

- Virus characterization data from U.S. CDC will be updated weekly starting later this season when sufficient numbers of specimens have been tested.

### Influenza-Like Illness Outbreaks – Maine, 2020-21 Influenza Season

- # new outbreaks: 0
- Total outbreaks 2020-21 season: 0

#### Influenza-Like Illness Outbreaks by Facility Type – Maine, 2020-21



#### Outbreak Facility Type Key:

LTC - Long Term Care Facility  
 AC - Acute Care Facility (nosocomial)  
 K12 - School (K-12) or daycare  
 Univ - School (residential) or University  
 HCW - Health care workers  
 Inst - Other institutions (workplaces, correctional facilities etc)  
 Camp - Camp

### Influenza-Like Illness Outbreak by Facility Type and County – Maine, 2020-21

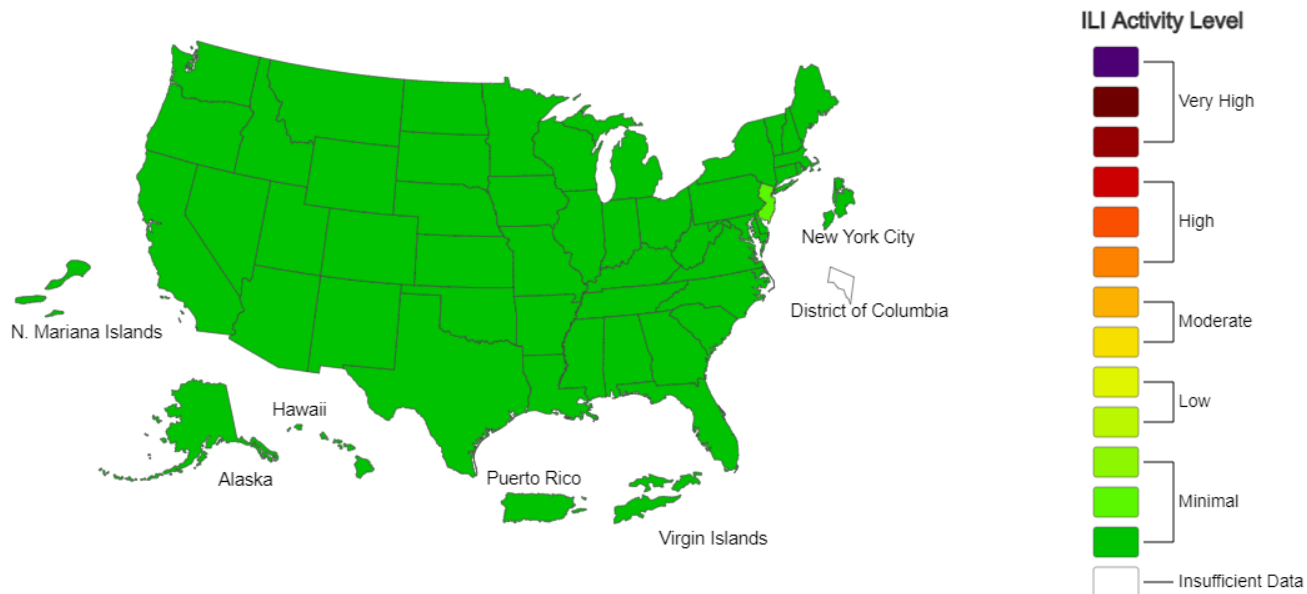
County	LTC	AC	K12	Univ	HCW	Inst	Camp	Total
Androscoggin	0	0	0	0	0	0	0	0
Aroostook	0	0	0	0	0	0	0	0
Cumberland	0	0	0	0	0	0	0	0
Franklin	0	0	0	0	0	0	0	0
Hancock	0	0	0	0	0	0	0	0
Kennebec	0	0	0	0	0	0	0	0
Knox	0	0	0	0	0	0	0	0
Lincoln	0	0	0	0	0	0	0	0
Oxford	0	0	0	0	0	0	0	0
Penobscot	0	0	0	0	0	0	0	0
Piscataquis	0	0	0	0	0	0	0	0
Sagadahoc	0	0	0	0	0	0	0	0
Somerset	0	0	0	0	0	0	0	0
Waldo	0	0	0	0	0	0	0	0
Washington	0	0	0	0	0	0	0	0
York	0	0	0	0	0	0	0	0
<b>Total</b>	0	0	0	0	0	0	0	0



**A Weekly Influenza Surveillance Report Prepared by the Influenza Division**

**Influenza-Like Illness (ILI) Activity Level Indicator Determined by Data Reported to ILINet**

**2020-21 Influenza Season Week 13 ending Apr 03, 2021**



\*This map uses the proportion of outpatient visits to healthcare providers for influenza-like illness to measure the ILI activity level within a state. It does not, however, measure the extent of geographic spread of flu within a state. Therefore, outbreaks occurring in a single city could cause the state to display high activity levels.

\*Data collected in ILINet may disproportionately represent certain populations within a state, and therefore may not accurately depict the full picture of influenza activity for the whole state.

\*Data displayed in this map are based on data collected in ILINet, whereas the State and Territorial flu activity map are based on reports from state and territorial epidemiologists. The data presented in this map is preliminary and may change as more data is received.

\*Differences in the data presented by CDC and state health departments likely represent differing levels of data completeness with data presented by the state likely being the more complete.

\*For the data download you can use Activity Level for the number and Activity Level Label for the text description.

\*This graphic notice means that you are leaving an HHS Web site.

For more information, please see CDC's Exit Notification and Disclaimer policy.

For more information on the methodology, please visit Outpatient Illness Surveillance methods section.

**Note: Due to COVID-19, states are not required to report influenza geographic spread to U.S. CDC during the 2020-2021 influenza season.**