

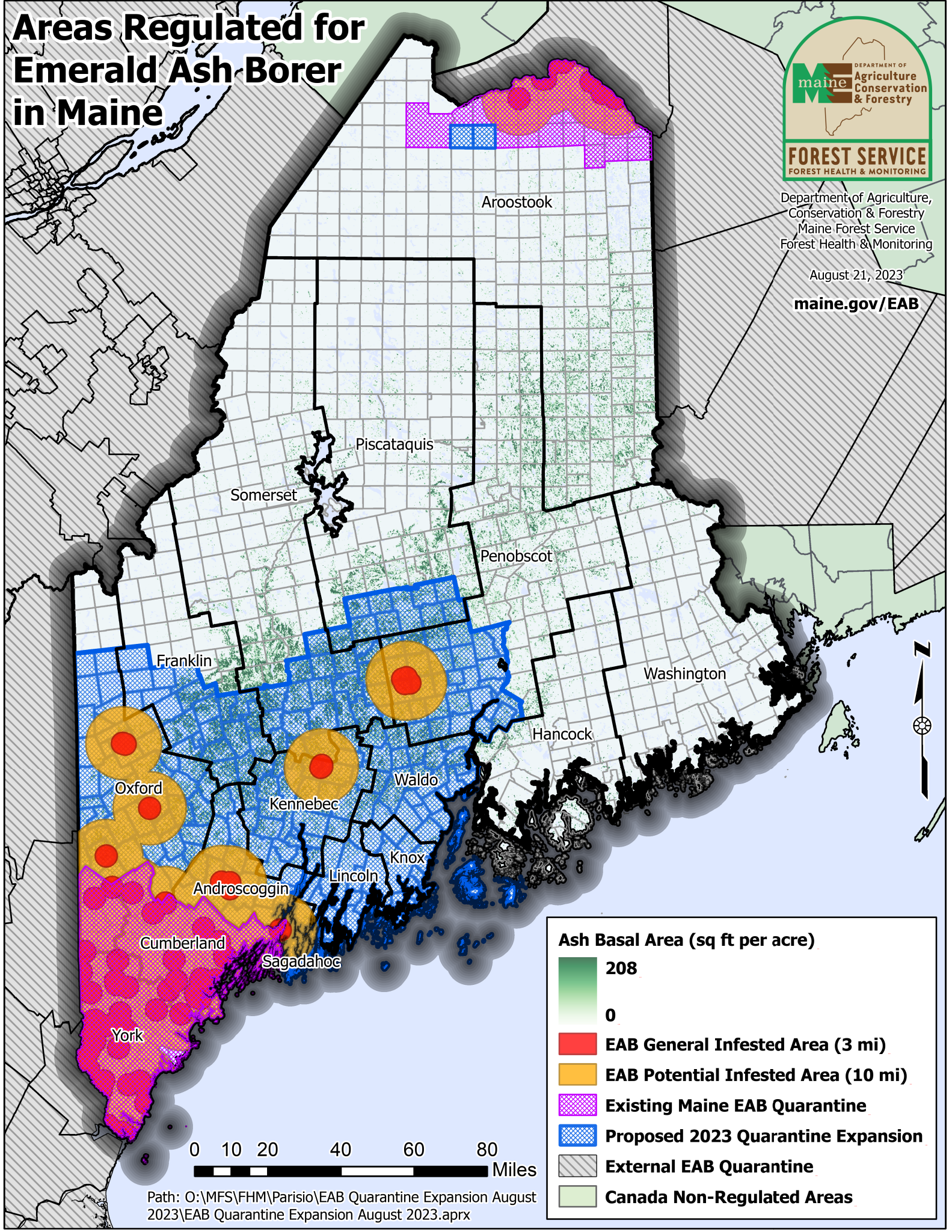
Areas Regulated for Emerald Ash Borer in Maine



Department of Agriculture, Conservation & Forestry
Maine Forest Service
Forest Health & Monitoring

August 21, 2023

maine.gov/EAB



Ash Basal Area (sq ft per acre)

- 208
- 0
- EAB General Infested Area (3 mi)
- EAB Potential Infested Area (10 mi)
- Existing Maine EAB Quarantine
- Proposed 2023 Quarantine Expansion
- External EAB Quarantine
- Canada Non-Regulated Areas

Path: O:\MFS\FHM\Pariso\EAB Quarantine Expansion August 2023\EAB Quarantine Expansion August 2023.aprx