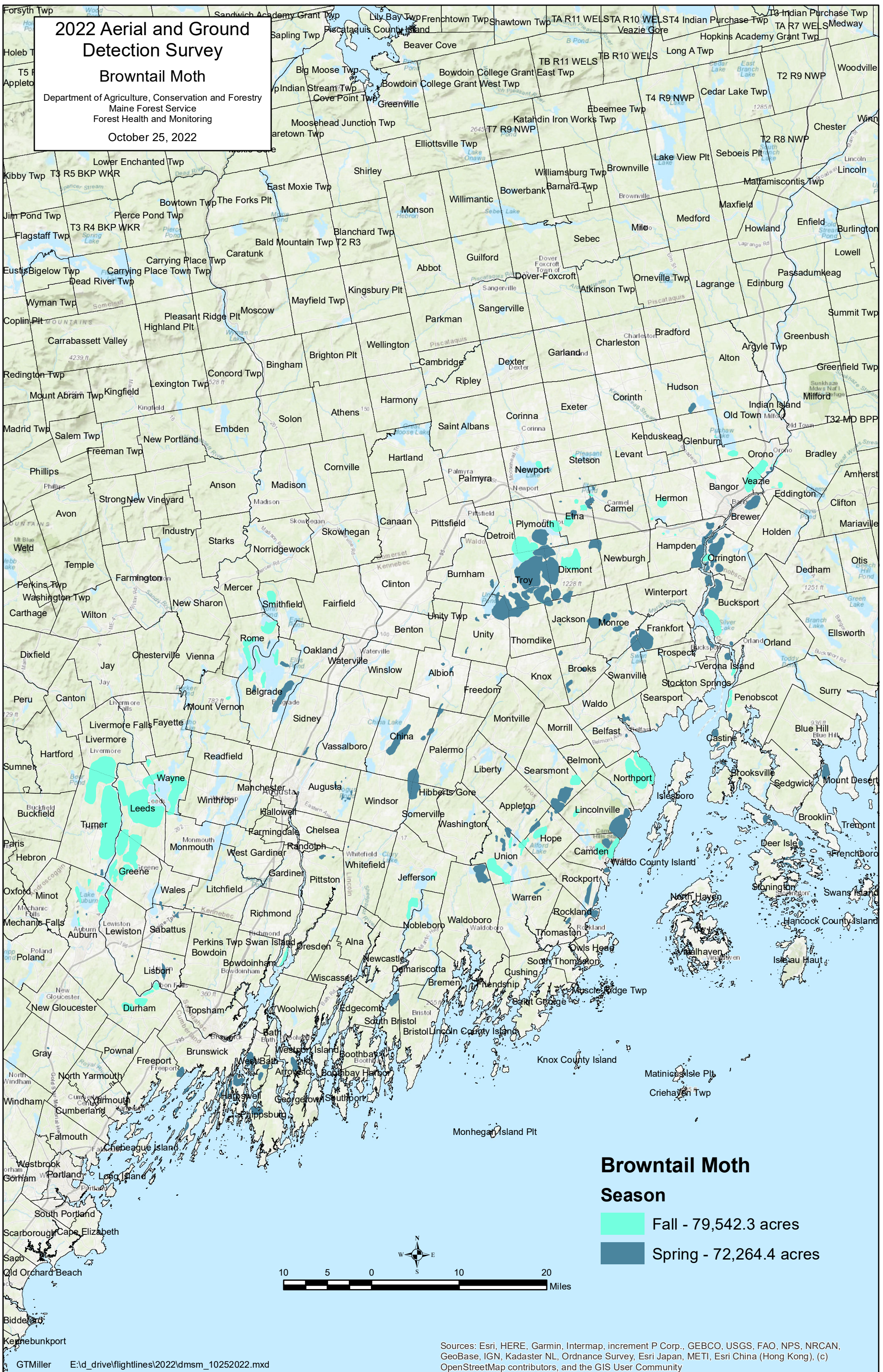


# 2022 Aerial and Ground Detection Survey

## Browntail Moth

Department of Agriculture, Conservation and Forestry  
Maine Forest Service  
Forest Health and Monitoring

October 25, 2022



Sources: Esri, HERE, Garmin, Intermap, increment P Corp., GEBCO, USGS, FAO, NPS, NRCAN, GeoBase, IGN, Kadaster NL, Ordnance Survey, Esri Japan, METI, Esri China (Hong Kong), (c) OpenStreetMap contributors, and the GIS User Community