

Event: Francis Scott Key Bridge Collapse

BEOC Partner Email Brief - 24May2024

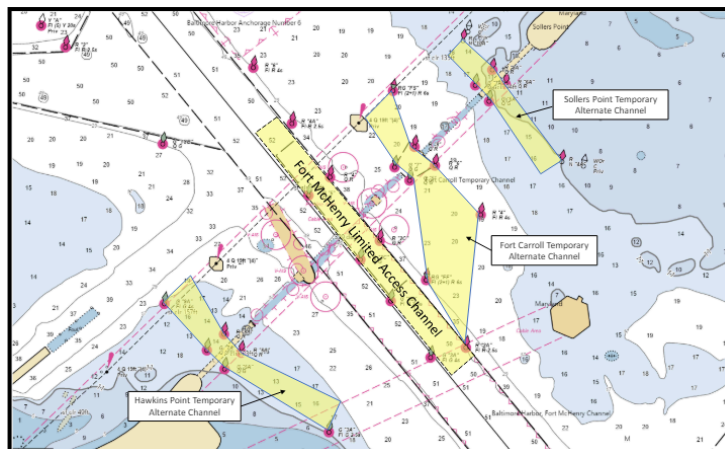
REMINDER: The Maryland Business Emergency Operation Center (MBEOC) is activated for this incident. The information in the following brief is intended for members of the PSIP & NPEP programs. You can find more information about our team on [our webpage](#). This brief will be sent once a week. Please [provide feedback](#) on our services.

There are 6 sections below: New Updates, Recovery, Transportation, Operational Information, Situational Awareness References, and Declarations/ Legislation/ Executive orders.

NEW UPDATES throughout the PDF document, yellow highlight indicates new information

- [Marine Safety Information Bulletin 049-24](#) was released May 21st.
 - **Fort McHenry Limited Access Channel:** Following the successful refloat and removal of the M/V DALI, the Captain of the Port (COTP) opened the Fort McHenry Limited Access Channel to commercial vessel traffic for 24-hour availability. This channel now has a depth of 50 feet, 400-foot horizontal clearance, and vertical clearance of 214 feet due to the adjacent BG&E powerlines.
 - **Francis Scott Key Bridge Safety Zone:** The safety zone identified in [33 CFR §165.89](#) established for all navigable waters of the Chesapeake Bay within a 2,000-yard radius of the Francis Scott Key Bridge remains in effect and is intended to protect personnel, vessels, and the marine environment. Except for vessels transiting in one of the four marked channels, no vessel or person will be permitted to enter the safety zone without first obtaining permission from the Captain of the Port (COTP).

Fort McHenry Limited Access Channel and Temporary Alternate Channels





Wes Moore | Governor
Aruna Miller | Lt. Governor
Russell J. Strickland | Secretary

RECOVERY

- Recovery operations began March 27th for the six missing workers who were on the bridge. Two bodies were recovered on March 27th and a [third body of a missing person](#) was recovered on April 5th. On April 15th, salvage teams recovered a vehicle with the remains of the [fourth victim](#) trapped inside. On May 1st they recovered the body of a [fifth construction worker](#) inside a red truck. On May 7th, the body of the [sixth construction worker](#) was recovered.

Recovery Resources - Government

Federal

- [Homeport updates for Mariners](#) - MSIB for Maryland - NCR. [COPT Details](#).
- [National Transportation Safety Board](#) (NTSB) investigation details. On May 14th, the NTSB released their [preliminary report](#).
- [Small Business Administration \(SBA\)](#): Businesses impacted by the FSK Bridge collapse are eligible for low-interest, long-term Economic Injury Disaster Loans (EIDLs) to help overcome temporary loss of revenue stemming from the bridge collapse. **Eligibility applies to small businesses, small agricultural cooperatives, small aquaculture businesses, and private nonprofit organizations.** The application deadline is 12/30/24.
 - Apply for assistance [online](#). Business Recovery Centers Below: (Note: locations and hours are subject to change)
 - [Baltimore County](#) - American Job Center, 7930 Eastern Ave., Baltimore, 21224. Hours of operation: Monday - Friday 8:30am - 4:30pm. Saturday & Sunday Closed.
 - [Baltimore City](#) - Care First, 1501 S. Clinton St, Suite 100, Baltimore, MD 21224. Hours of operation: M-F, 8am-6pm, Saturday 10am-2pm, Sunday Closed.

State: *Including those as part of the PORT ACT*

- [Maryland's Francis Scott Key Response Website](#) is meant to assist workers and businesses in identifying the resources available to them. This website serves as the central location where all programs and resources will be shared as well as the locations where workers and businesses may receive in person assistance. This information will be updated as additional programs become available.
- [Maryland Department of Commerce](#) established the "[Port of Baltimore Emergency Business Assistance Program](#)" to provide up to \$100K in grants to eligible businesses. Grant funds will be awarded on a first-come first-serve basis. Incomplete applications will not be processed. [FAQ](#)
 - In partnership with the Governor's Office and local partners launched the [Official State of Maryland Business Impact Survey](#). This survey will help inform how the Port Act funding will be allocated.
- [Maryland Department of Housing and Community Development](#)



**WHOLE
COMMUNITY
INTEGRATION**



Wes Moore | Governor

Aruna Miller | Lt. Governor

Russell J. Strickland | Secretary

- Under the April 5th executive order, DHCD is authorizing the [Neighborhood Business Works Program](#) to provide \$15 million in grants and no-interest loans to eligible businesses of 500 or fewer employees that have been impacted by a loss of revenue or an increase to costs relating to the Key Bridge collapse. The application portal for these programs will be open April 22, 2024.
 - Neighborhood Business Works: [FAQ](#)
 - Small Business Grants up to \$50,000.
 - Loan Program for Loans up to \$500,000 - 12 month payment deferral period, Loan repayment term - subject to underwriting, 0% Interest rates, 10% forgiveness with timely repayment.
- [Maryland Department of Labor](#) Created Two Programs:
 - [Port of Baltimore Worker Retention Program](#): The Worker Retention Program can provide up to \$200,000 in grant funding to pay for employee wages (up to \$7,500 per worker) to keep workers on the job and avert layoffs, as well as subsidize supportive services for workers such as childcare and transportation. If you want to apply for the Worker Retention Program, complete [Part A](#) and [Part B](#). The last day to apply for the program was May 17th. The Program is no longer accepting applications.
 - [Resources for Workers](#):
 - [Unemployment Insurance Assistance](#): Unemployment Insurance is available to eligible employees who worked in Maryland and have been laid off or are working reduced hours due to the Key Bridge collapse. Hotline (667-930-5989), [online](#) (Beacon System), Mobile Office at Steamship Trade Center, 1901 Portal Street, Baltimore, MD 21224 (Hours: M-F, 8:30am - 4:30pm) or [in-person](#). For more information on how to file an Unemployment Insurance claim, visit the Department of Labor's [Information for New Claimants webpage](#).
 - [Port of Baltimore Emergency Worker Support Program](#) - This program will provide \$430 weekly temporary relief payments during the Port's reduced operations, while funds are available. Port workers who receive unemployment insurance benefits are eligible for this program, as well as independent contractors and self-employed workers who meet the criteria.
 - [Apply](#) for the Port of Baltimore Support Program here. [FAQs](#).
 - A temporary office at 2501 Broening Highway near the Seagirt terminal will open to help workers with applications for the Worker Support Program as well as for Unemployment Insurance. Open weekdays from 8:30 a.m. to 4:30 p.m.
- [Maryland Insurance Administration](#) (MIA)- offers a variety of services and resources to help Maryland consumers and businesses with insurance needs. If you or your business has insurance-related issues or questions regarding losses from the Key Bridge collapse, contact them.
 - Consumer Advisory: Premium Accommodations - [Many Insurance carriers have volunteered to make accommodations](#), which may include suspension of



Maryland

DEPARTMENT OF
EMERGENCY MANAGEMENT

Wes Moore | Governor

Aruna Miller | Lt. Governor

Russell J. Strickland | Secretary

premiums due, extension of billing due dates, extension of premium grace periods, and waiver of installment and late-payment fees. MIA has compiled and will continue to update a list of accommodations announced publicly by insurance companies. You can view the list on our website at this [link](#).

- [Maryland Port Administration](#) - Port Administration [statement on activity](#) at the port. The MPA website has a [FAQ section](#) that answers a lot of questions including general information, statistical reports, shipping & terminal and other agency contacts.
- [Maryland Transportation Authority](#): publishes updates on traffic patterns. Visit the Maryland Transportation Authority (MDTA) [Rebuild the Key Bridge web page](#) to learn more about rebuilding the bridge.
- [Comptroller of Maryland](#) -
 - [Business Tax Payment Waiver](#) - On March 29th, the Comptroller proactively issued a waiver of any late payment or interest on certain business taxes through May 31, 2024. Businesses do not need to apply for this waiver, the waiver is applied automatically. Taxes included under this waiver are: Employer Withholding, Sales and Use, Tobacco, Motor Fuel, Admissions and Amusement, Tire Fee, Bay Restoration Fee, Transportation Network Fee
 - [IFTA Requirements Waiver](#). At the request of the Maryland Motor Truckers Association, the Comptroller is waiving certain IFTA requirements – specifically IFTA licensing and decal requirements for motor carriers hauling freight to and from a seaport through May 31st. This is intended to provide temporary relief for the additional operating costs the trucking industry has faced since the Key Bridge collapse.
- **Crisis Lifeline.** Tragedy impacts all of us and it can be hard to process. [Call or text 988](#) if you or a loved one are feeling overwhelmed, sad, or stressed. 988 is available free 24 hours a day, 7 days a week.

Local

- [Anne Arundel County](#) Francis Scott Key Bridge Resources. Anne Arundel County [Workforce Development](#) has resources available for businesses & individuals impacted by the Port closure. Anne Arundel County Businesses should contact the [Anne Arundel Economic Development Corporation](#) (AAEDC) for information and assistance.
- [Baltimore County](#) - Resources for Francis Scott Key Bridge Incident web page.
- [Baltimore City](#) - Francis Scott Key Bridge Updates web page. [News & Information](#).
 - April 10th, Mayor Brandon M. Scott announced [additional steps](#) that the City of Baltimore is taking to respond to the Key Bridge Collapse. The [Action Plan](#) will continue to evolve and expand as the community needs change.
 - The [Mayor's Office of Immigrant Affairs](#) has the [Baltimore Civic Fund](#) which the support is going directly to the families of the deceased and the two survivors.
 - [Wage Subsidy Program](#) - The Mayor and the Mayor's Office of Employment Development are launching a Wage Subsidy Program to assist Baltimore City based Port-impacted small businesses in retaining their employees. The City of Baltimore is committing an initial \$1 million for this program. Eligible businesses can receive up to \$7,500 per worker in subsidy payments with a



WHOLE
COMMUNITY
INTEGRATION



Wes Moore | Governor

Aruna Miller | Lt. Governor

Russell J. Strickland | Secretary

maximum of \$22,500 or 3 months of assistance per worker. Due to high demand, the program paused its application process on 5/13/24. You can still apply, but you will be waitlisted.

- [Key Bridge Community Relations](#): As part of the Unified Command response to the Key Bridge collapse, the Joint Information Center (JIC) Community Relations Branch has created a **Community Needs Assessment Survey**. The purpose of the survey is to collect information on unmet needs to inform Unified Command decisions and information products. It is available in [English](#), [Spanish](#) and [French](#) to help collect information from all of the impacted residents and community groups across Baltimore County, Baltimore City, and Anne Arundel County. Other languages can be made available upon request. The goal is to establish trust, foster understanding, and address the unique needs and concerns of impacted residents and communities. By amplifying local voices, promoting diversity, and forging relationships with community organizations, the Unified Command will strive to create meaningful and sustainable impacts.

Recovery resources - Nonprofit & Private Sector

- [211 Maryland](#) - has a comprehensive health and human services resource database. With over 7500 resources, individuals with essential needs can get connected to local help 24/7/365.
- [Baltimore Port Alliance](#) is a non-profit group of maritime business representatives dedicated to addressing the needs and interests of businesses and individuals who make their living and support their families through maritime commerce.
- [Baltimore Community Foundation's Key Bridge Emergency Fund](#) : The Baltimore Community Foundation, as part of their Maryland Tough, Baltimore Strong Key bridge fund, is providing grants to community organizations (501c3's and those without) providing support to port workers and their families, first responders and their families and surrounding communities. Interested organizations can visit their webpage to [apply](#).
 - BCF is partnering with the [CASH Campaign of Maryland](#) to provide direct cash assistance to people whose income has been impacted by the port closure associated with the Key Bridge collapse. Eligible port workers may receive a one-time payment of \$1,000. Apply [here](#) or visit an [in person location](#).
- [BayVanguard Bank](#) - Existing customers of BayVanguard bank that are directly impacted by the Francis Scott Key Bridge collapse may be eligible for direct deposit assistance, payment deferments, and other assistance programs.
- [Casa De Maryland](#): has support programs for work programs & legal services. Includes [press releases](#) related to FSK bridge collapse.
- [Credit Unions Committed to Financial Relief](#) - the Maryland-DC Credit Union Association have joined the economic and financial response to credit union customers who are impacted by the Key Bridge collapse. These relief programs include: Deferments on consumer loan payments and mortgage payments, Waivers on overdraft and/or late payment fees.



WHOLE
COMMUNITY
INTEGRATION



Maryland

DEPARTMENT OF
EMERGENCY MANAGEMENT

Wes Moore | Governor

Aruna Miller | Lt. Governor

Russell J. Strickland | Secretary

- [Greater Baltimore Committee](#) - The Maryland Tough Baltimore Strong (MTBSA) is a cross-sector collaboration of philanthropic, business and community organizations and leaders committed to ensuring a full recovery following the FSK bridge collapse.
- [Hope Floats Baltimore](#): Links to support: Baltimore Civic Fund, Support Stranded Sailors, Chief Petty Officers Association of Baltimore, United Way, and other information.
- [Maryland Chamber of Commerce](#), World Trade Center Institute and the Greater Baltimore Committee want to understand what resources would be helpful to impacted businesses.
- [Maryland Food Bank](#) - Find nearest Food Pantry location.
- [Maryland Nonprofit and Maryland Latinos Unidos](#): are [compiling a comprehensive list](#) of available resources, services and assistance programs from fellow organizations, community groups, and faith based organizations that can be mobilized to aid those affected by the Key Bridge collapse.
- [Maryland Philanthropy Network](#): has a web page of different philanthropic responses and donation opportunities.
- [Maryland Voluntary Organizations Active in Disaster \(VOAD\)](#): sign up for updates and nonprofit, faith-based and community organization Resource & Operational Coordination calls and support those affected.
- [United Way of Central Maryland](#): will support efforts in eviction prevention, food access, and other mid-and long-term needs.

TRANSPORTATION

- [The I-695 outer loop is closed](#) at Exit 1, and the 695 inner loop is closed at Exit 42.
- [Federal Motor Carrier Safety Administration \(FMCSA\)](#) Extension of Emergency Declaration Under 49 CFR 390.25 No.2024-002 (May 7th). The US DOT and FMCSA, [declare that an emergency exists](#) to extend the emergency declaration issued by the Governor of the State of Maryland and continuing the emergency relief granted from certain regulatory requirements in Part 395 of the Federal Motor Carrier Safety Regulations (FMCSRs).
- [Maryland Transportation Authority](#): Vehicles transporting hazardous materials are prohibited in tunnels and should use the western section of I-695 around the tunnels. [This includes vehicles carrying bottled propane gas in excess of 10 pounds per container](#) (max of 10 containers), bulk gasoline, explosives, and significant amounts of radioactive materials. It is important to note that diesel fuel transports (placard 1993) are permitted in tunnels. While bearing flammable placards, these carriers are classified as hauling combustibles due to their higher flashpoint and lesser hazard to the public. Vehicles in excess of 13'-6", in height, or 96" (8 feet) in width are prohibited from using the Baltimore Harbor Tunnel. I-95 Ft. McHenry Tunnel restrictions are height – 14' - 6" width – 11' - 0".

OPERATIONAL INFORMATION - updates can be found [here](#) - Key Bridge Response 2024.



WHOLE
COMMUNITY
INTEGRATION



Wes Moore | Governor
Aruna Miller | Lt. Governor
Russell J. Strickland | Secretary

****MSIB 049-24 - Key Bridge Safety Zone****



Channel & Port Activity

- Marine Safety Information Bulletin 049-24
 - **Fort McHenry Limited Access Channel:** Following the successful refloat and removal of the M/V DALI, the Captain of the Port (COTP) opened the Fort McHenry Limited Access Channel to commercial vessel traffic for 24-hour availability. This channel now has a depth of 50 feet, 400-foot horizontal clearance, and vertical clearance of 214 feet due to the adjacent BG&E powerlines. Deep draft vessels still require a Maryland State Pilot and two escort tugs. The Maryland Pilots will impose a 3 ft under keel clearance (UKC) requirement. For container ships greater than a 1,000 ft in length and over 125 ft in beam, transits will be limited to winds being less than 15 knots; all other vessel transits will be limited to winds being less than 20 knots per Weather Forecast for 39.22N 76.54W. Deep draft traffic has priority use of this channel. Tug and barge traffic should make maximum use of the three Temporary Alternate Channels. Any use of the Fort McHenry Limited Access Channel by non-deep draft commercial vessels should be deconflicted with the Maryland Pilots at (410) 342-6013.
 - **Fort Carroll Temporary Alternate Channel:** is open 24-hours daily to non-deep draft commercial vessels with a controlling depth of 20 ft, a 300-ft horizontal clearance, and vertical clearance of 135 ft.
 - **Hawkins Point Temporary Alternate Channel:** is open 24-hours daily to non-deep draft commercial vessels with a controlling depth of 14 ft, a 280-ft horizontal clearance, and vertical clearance of 124 ft.
 - **Sollers Point Temporary Alternate Channel:** is open 24-hours daily to all traffic, to include recreational vessels, with a controlling depth of 11 ft, a 264-ft horizontal clearance, and vertical clearance of 95 ft.
 - The most current U.S. Army Corps of Engineers hydrographic survey data is available on the internet at [eHvdro](#).



**WHOLE
COMMUNITY
INTEGRATION**



Wes Moore | Governor

Aruna Miller | Lt. Governor

Russell J. Strickland | Secretary

- **Francis Scott Key Bridge Safety Zone:** The safety zone identified in [33 CFR §165.89](#) established for all navigable waters of the Chesapeake Bay within a 2,000-yard radius of the Francis Scott Key Bridge remains in effect and is intended to protect personnel, vessels, and the marine environment. Except for vessels transiting in one of the four marked channels, no vessel or person will be permitted to enter the safety zone without first obtaining permission from the Captain of the Port (COTP).
 - The Maryland Pilots will resume their regular coordination of deep draft traffic and are available at (410) 342-6013.
 - Within the safety zone, recreational vessels must transit at a no wake speed; commercial vessels must transit under 10 knots. All vessels transiting the safety zone must remain within the marked channels and well clear of vessels engaged in salvage and safety operations.
 - All commercial vessels not associated with salvage operations shall make a Sécurité broadcast on VHF channel 16 at 30-minutes prior to passing the remaining structure of the Key Bridge.
- **Fort McHenry Limited Access Channel operational constraints and limiting factors:**
 - All traffic must be one-way, restricted to less than 10 knots, and require two escort tugs.
 - Limited availability of harbor assist tugs during heavy traffic times due, in part, to current escort requirements.
 - Outbound/inbound vessels must clear the Fort McHenry Limited Access Channel before any inbound vessel comes above the Chesapeake Bay Bridge.
 - Westbound vessels cannot enter the Brewerton Eastern Extension Channel until the outbound/inbound vessel clears the Fort McHenry Limited Access Channel.
- **Due to the above constraints and limitations, the following processes are in place by the COTP in partnership with the Maryland Pilots for all Baltimore traffic:**
 - Pilot and tug scheduling will generally be coordinated on a first-come-first serve basis.
 - Outbound and shifting vessels must sail within 15 minutes of their ordered sailing time or the assigned tugs will depart for the next scheduled movement. The movement may be rescheduled when traffic permits and necessary tug assets are available.
 - The below matrix establishes the times between all vessel movements within the Port of Baltimore for each direction combination to most efficiently use available tug assets.
- The Biden-Harris Administration [Approves Grant Funding](#) to Expedite Capacity Expansion for Port of Baltimore Terminal Operator, Tradepoint Atlantic.



Wes Moore | Governor
Aruna Miller | Lt. Governor
Russell J. Strickland | Secretary

SITUATIONAL AWARENESS REFERENCES

- [Governor Moore Recorded Press Conferences](#) on the collapse of the FSK Bridge
- On April 5th, President Biden visited Baltimore and announced a [series of steps](#) his Administration is taking following the bridge collapse.
- [Key Bridge Response 2024 Website](#): Official site, maintained by the Unified Command, for the most up-to-date information regarding the Francis Scott Key Bridge Response.
- [National Weather Service](#): Hour by hour Forecast.
- [Congressional Research Service](#) Baltimore Bridge Collapse FAQ.

DECLARATIONS, LEGISLATION, EXECUTIVE ORDERS

- On April 9th, Governor Wes Moore signed into law the Maryland [Protecting Opportunities and Regional Trade \(PORT\) Act](#). The bipartisan legislation supports businesses and workers who have been affected by the collapse of the Francis Scott Key Bridge. On April 5th, Governor Moore authorized [\\$60 million](#) and a series of executive actions to respond to the bridge collapse. You can learn more about the programs by reading this [fact sheet](#).
- [Executive Order 01.01.2024.14](#) - Prohibiting certain intercepts of temporary economic and financial assistance relief related to the FSK Bridge collapse.
- [Executive Order 01.01.2024.13](#) - Authorizes the Secretary of Natural Resources to Modify Rules for the Operation of Vessels in Close Proximity to the FSK Bridge Area.
- [Executive Order 01.01.2024.12](#) - Authorizing the suspension of statutes, rules, and regulations governing grant procurements and temporary assistance programs related to the FSK Bridge collapse.
- [Executive Order 01.01.2024.11](#) - Establishing Temporary Economic and Financial Relief Programs for Workers and Businesses Impacted by the Francis Scott Key Bridge Collapse and Disruption of Operations to the Port of Baltimore.
- [Executive Order 01.01.2024.09](#) - Maryland State of Emergency Declaration
 - [Renewal Executive Order 01.01.2024.16](#) signed Apr 25, 2024
- Baltimore City Local State of Emergency Declaration. [Link](#).
- Baltimore County Local State of Emergency Declaration: [Link](#)

From Your Whole Community Integration Team,
 Tessa Lovro, Whole Community Branch Manager - wci.mdem@maryland.gov
 Cory Edwards, Business Engagement Program Manager - psector@maryland.gov
 Christiana Ferguson, Nonprofit Engagement Program Manager - npep.mdem@maryland.gov

Maryland Business Emergency Operation Center (MBEOC)
psector@maryland.gov 24/7 line: 877-636-2872

We are Maryland Tough, Baltimore Strong!



**WHOLE
 COMMUNITY
 INTEGRATION**