

# Mapping Local Land Trust Protected Lands Data

## Project Summary:

Maryland Department of Planning, Department of Natural Resources, and Maryland Environmental Trust are seeking your help in sending us your most recent land conservation data for properties where your organization has sole or joint interest.

As a next step in the state's effort to collect the very best and most comprehensive land trust and private conservation organization data, we are requesting the completion of a spreadsheet designed to capture the necessary data to identify and map your organization's protected lands. Please see below for a list of reasons for our request.

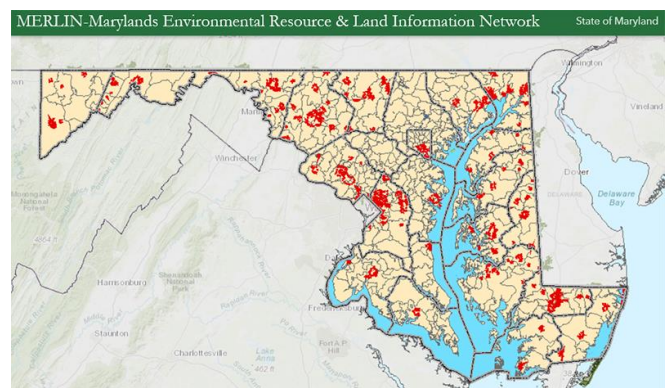
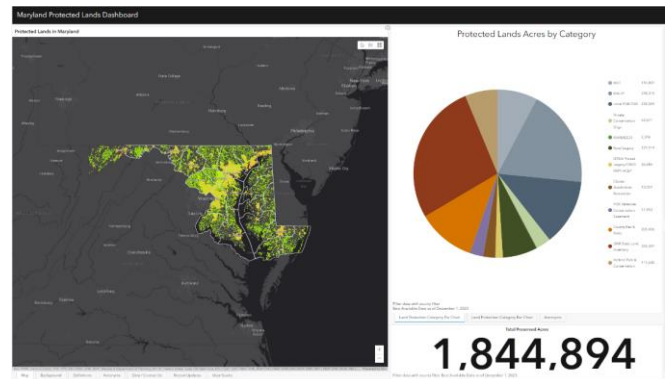
We aim to streamline reporting by local and trusts. If you're already reporting to another entity, provide us their contact information and we'll reach out to them for this information.

If you need assistance, please let us know, and we will be glad to arrange a meeting with you and others with questions to guide you through the process. As a first step, we will schedule one or more webinars to walk through the request, instructions and the spreadsheet.

## Reasons for Request:

### Why this helps the land trusts

- Ensures that all of their solely held land holdings are distinguished and publicized online, such as through the Maryland Protected Lands Dashboard, MERLIN and MD iMap.
- Governments may integrate land preservation GIS data into planning tools, interactive maps and web applications designed to support local planning, preservation, and community development objectives.
- Provides accurate picture of what lands are currently protected and what is not. Information can be used by land trusts to prioritize protection of new land.



### Why this helps government entities

- Ensures that measurements of progress towards cumulative land preservation goals (e.g., 40% by 2040 goal) are accurate, helps to direct public dollars to priority areas that are not already protected, and reflects a more complete picture of preservation accomplishments by all parties including the land trusts and conservancies.
- GIS data enables the Chesapeake Bay Program to track progress toward the Chesapeake Bay Watershed agreement goals.

## Webinar Details:

March 1, 2024

Join us on Friday, March 1, 2024 to learn more! This free webinar will discuss the goals and purpose of this project, explain the data collection process, and allow time for participant questions.

[Register here.](#)