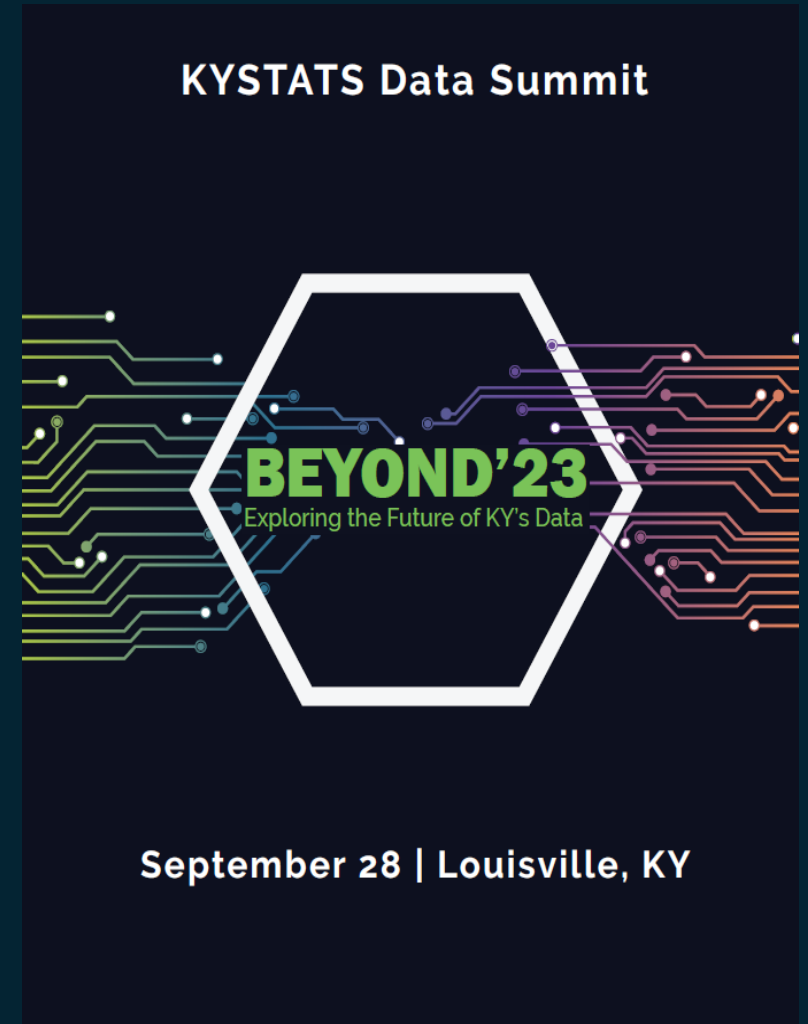


# WELCOME BACK!



# BEYOND'23

Exploring the Future of KY's Data

## Today's Agenda

**9:15-10:00** – Opening Session

**10:00-10:45** – Opening Keynote

**10:45-11:00** – Break

**11:00-11:30** – **BREAKOUT SESSIONS**

- Using Data to Inform Business Leaders and Policymakers
- Research on Short-Term Certificates in Kentucky
- Data-Driven Broadband Expansion

**11:35-12:05** – **BREAKOUT SESSIONS**

- Border-state Data Collaborations and the Multi-State Postsecondary Report
- And We're Here to Pump You Up: UK and KYSTATS' Partnership to Build Evaluation Capacity
- The Cost of Motherhood: How Kentucky Women Pay the Price

**12:05-1:15** – Lunch on Your Own

**1:15-1:30** – Data Walk

**1:30-2:00** – Digital Learning & Employment Records: How "Skills Resumes" Are Taking Shape Across the Country

**2:00-2:15** – Break

**2:15-2:45** – **BREAKOUT SESSIONS**

- Tracing Out the Teacher Pipeline: Where Teacher Data are Now, and Where to Go Next
- Utilizing Workforce Data to Build Talent Pipelines
- Championing Education Data Use in Eastern Kentucky

**2:50-3:20** – **BREAKOUT SESSIONS**

- Data Integration for Evaluation and Beyond
- The Power of the Kentucky Longitudinal Data System & Requesting KYSTATS Data
- The Kentucky Human Capital and Higher Education Project

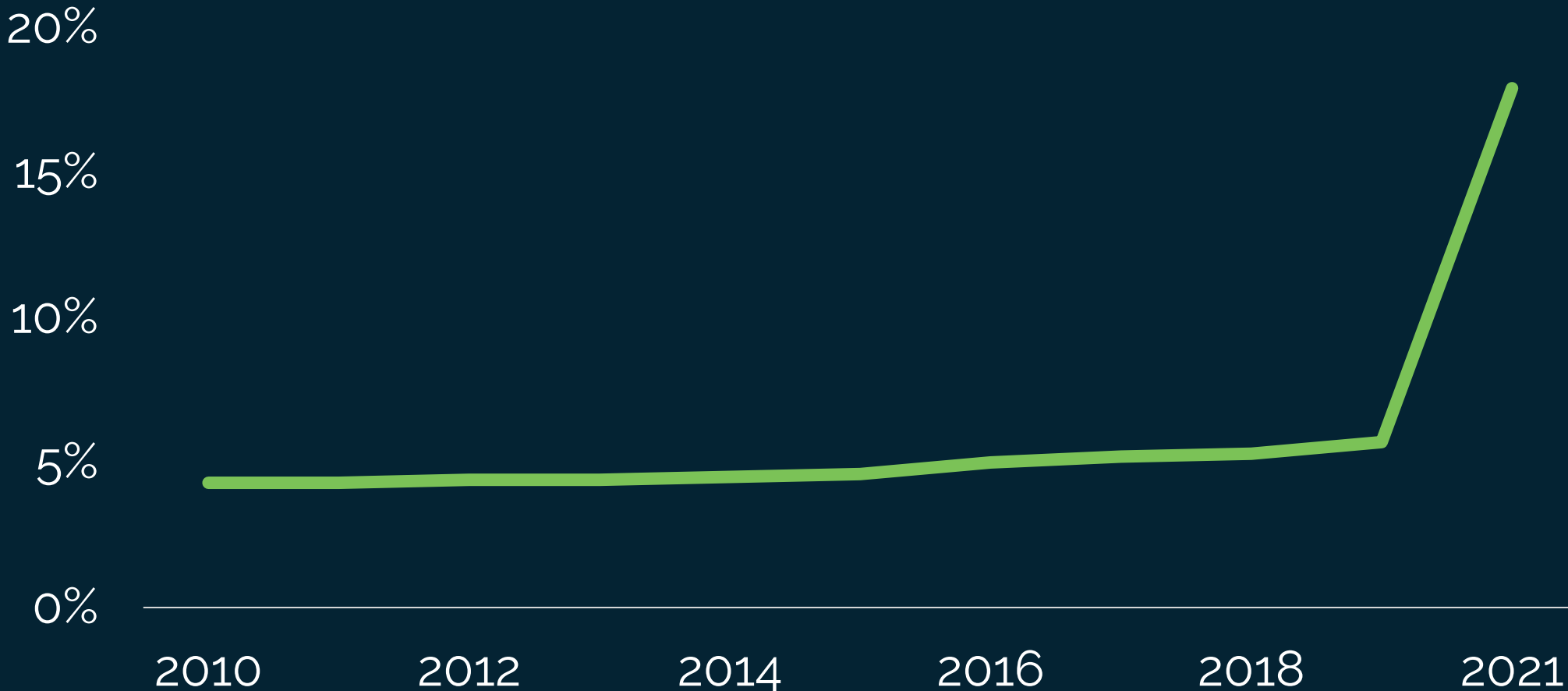
**3:20-3:35** – Break

**3:35-4:20** – Artificial Intelligence and the Education & Workforce Landscape

**4:20-4:30** – Concluding Thoughts

**4:30-5:30** – Reception Sponsored by Salesforce & Carahsoft

# WORK FROM HOME TRIPLED



Source: US Census Bureau America Community Survey

# HR experts: Companies requiring in-office work could lose out on 70% of candidates—employees are 'calling the shots'

Forbes

MARKETS BUSINESS INVESTING TECH POLITICS CNBC TV INVESTING CLUB PRO

PERSONAL FINANCE

## Full-time office work is 'dead': 3 labor experts weigh in on the future of remote work

PUBLISHED FRI, MAR 3 2023 3:20 PM EST | UPDATED FRI, MAR 3 2023 3:53 PM EST

Greg Iacurci  
@GREGIACURCI

SHARE f t in e

**NEWS** POLITICS U.S. NEWS WORLD BUSINESS HEALTH NBC NEWS TIPLINE VIDEO CULTURE & TRENDS

FORBES > LEADERSHIP > CAREERS

## Remote Work Is Here To Stay And Will Increase Into 2023, Experts Say

Bryan Robinson, Ph.D. Contributor

author of *CHAINED TO THE DESK IN A HYBRID WORLD* (NYU Press, 2023)

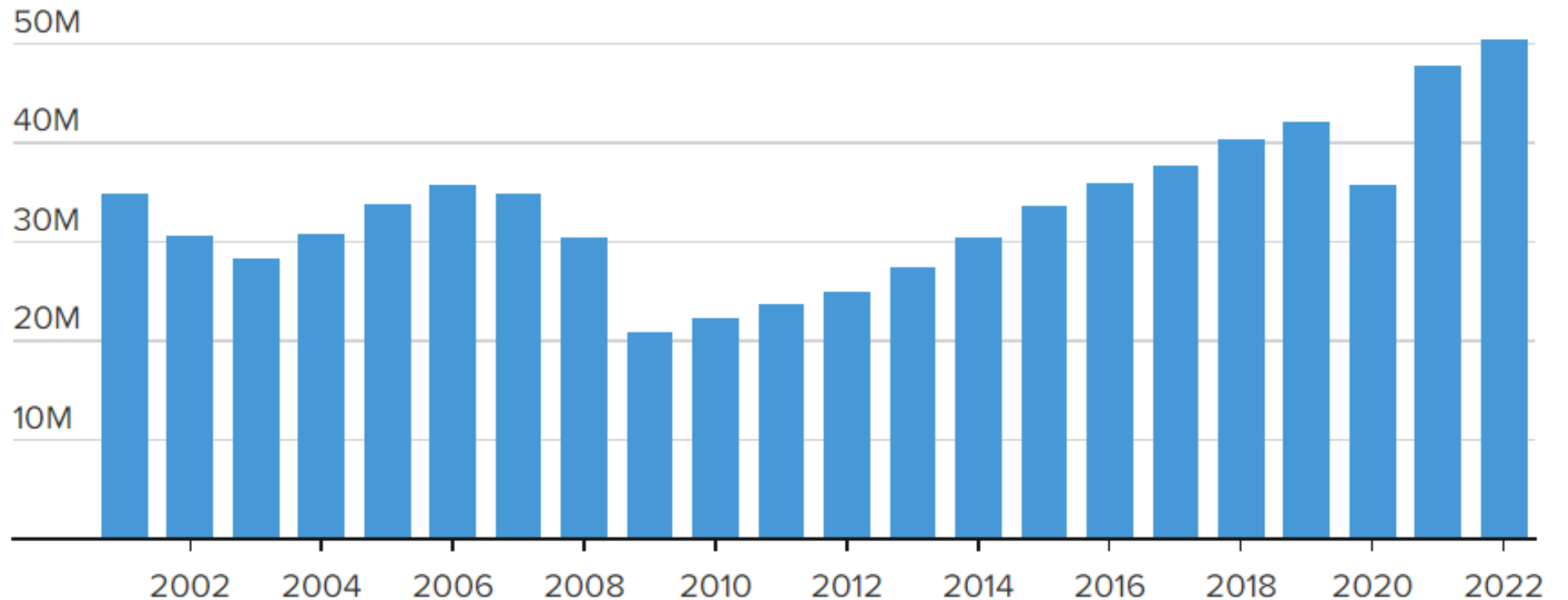
Follow

ECONOMY

## Full return to office is 'dead,' experts say – and remote is only growing

The return to the office once seemed inevitable. Now, it's remote – forcing employers into a "bend or break" moment.

# MORE PEOPLE **QUIT THEIR** **JOB**S THAN EVER



Note: Total nonfarm jobs, seasonally adjusted

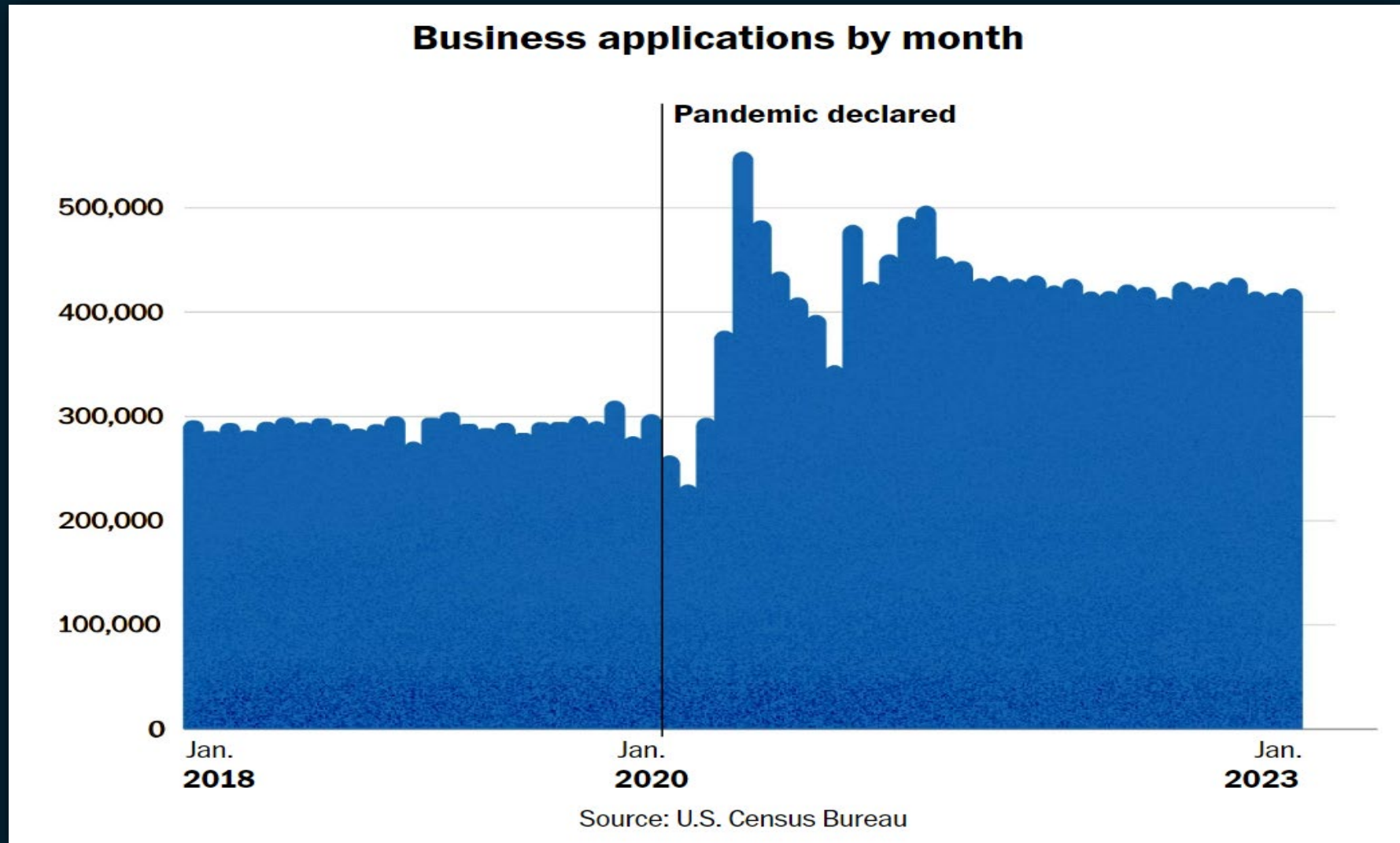
Chart: Gabriel Cortes / CNBC

Source: U.S. Bureau of Labor Statistics' [Job Openings and Labor Turnover Survey](#) via FRED

Data last updated Feb. 1, 2022



# BUSINESS APPLICATIONS ALMOST DOUBLED



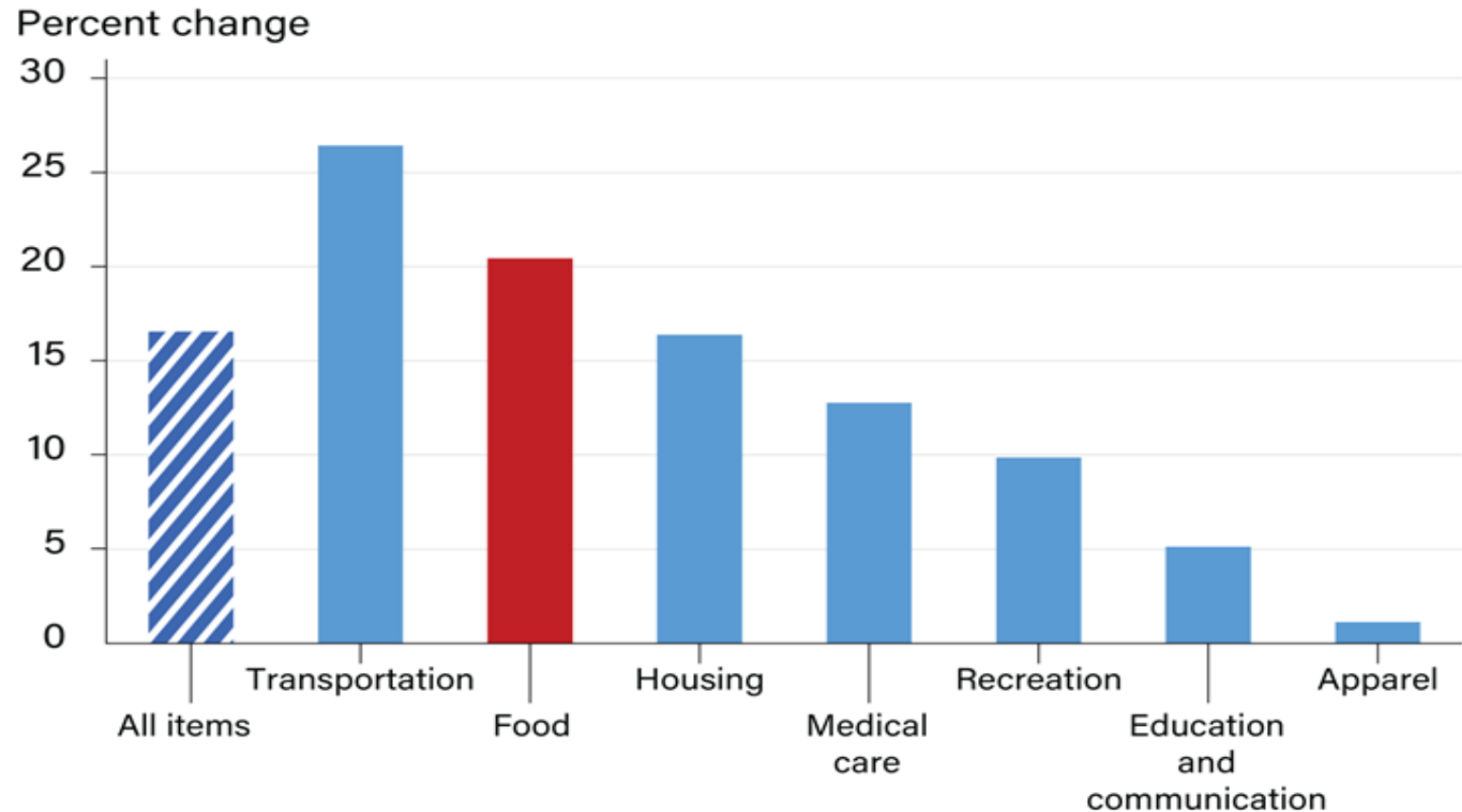
# LARGEST INCREASE IN HOME PRICES SINCE 1992





# TRANSPORTATION, FOOD, HOUSING, & MEDICAL CARE PRICES INCREASED

Price change for major Consumer Price Index (CPI) categories, 2018-22



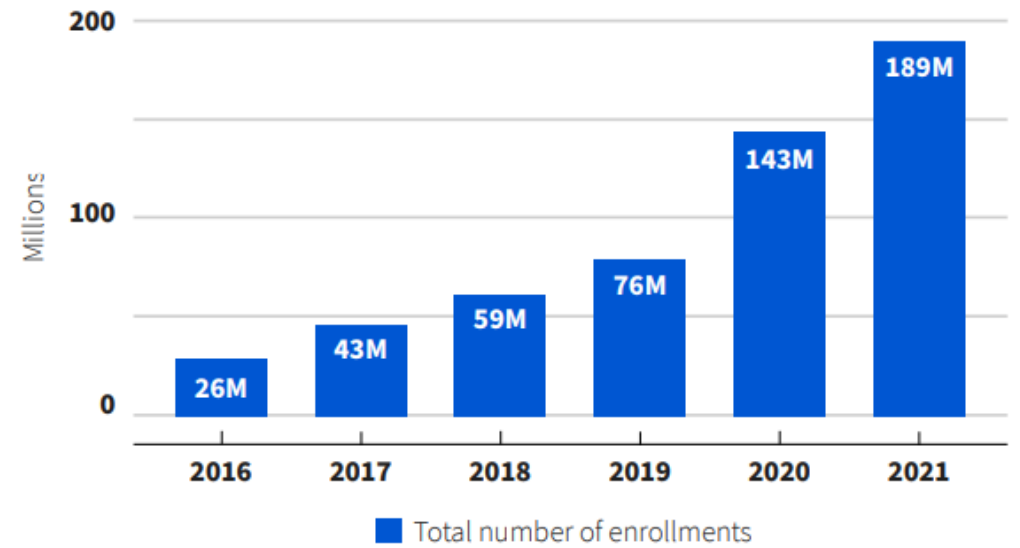
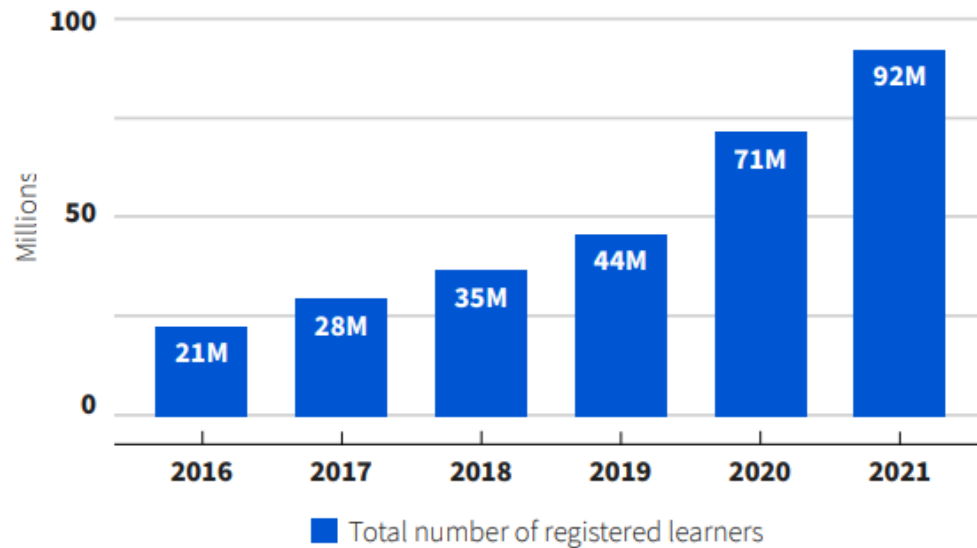
Source: USDA, Economic Research Service using U.S. Department of Labor, Bureau of Labor Statistics, Consumer Price Index data.

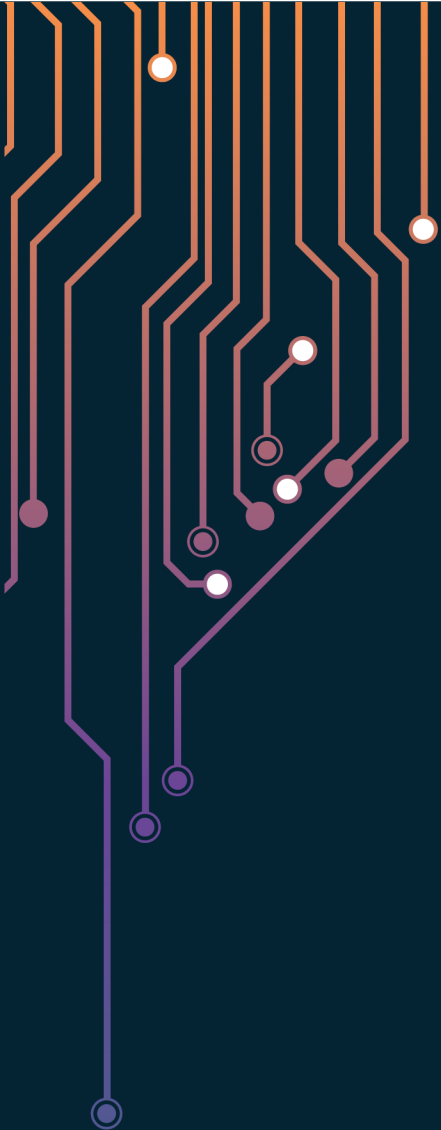


# MORE STUDENTS THAN EVER ARE LEARNING ONLINE

## More learners are accessing online learning

The demand for online learning on Coursera continues to outpace pre-pandemic levels.







## Why Banana Bread Is the Official Comfort Food of the Coronavirus Quarantine

By Rachel Tepper Paley  
Published Apr 2, 2020



## Will virtual happy hours go offline as COVID-19 restrictions ease and in-person social events return?



NETFLIX

## Episodes | Love Is Blind

Season 1 ▼

Release year: 2020

Nick and Vanessa Lachey host this social experiment where single men and women look for love and get engaged, all before meeting in person.



59m



An abstract graphic on a dark blue background. A large white hexagon is centered. From the left and right sides of the hexagon, numerous circuit-like lines in yellow, green, blue, purple, and orange extend outwards. These lines are punctuated with small circles in various colors, some of which are glowing white. The overall aesthetic is futuristic and technological.

# BEYOND '23

Exploring the Future of KY's Data

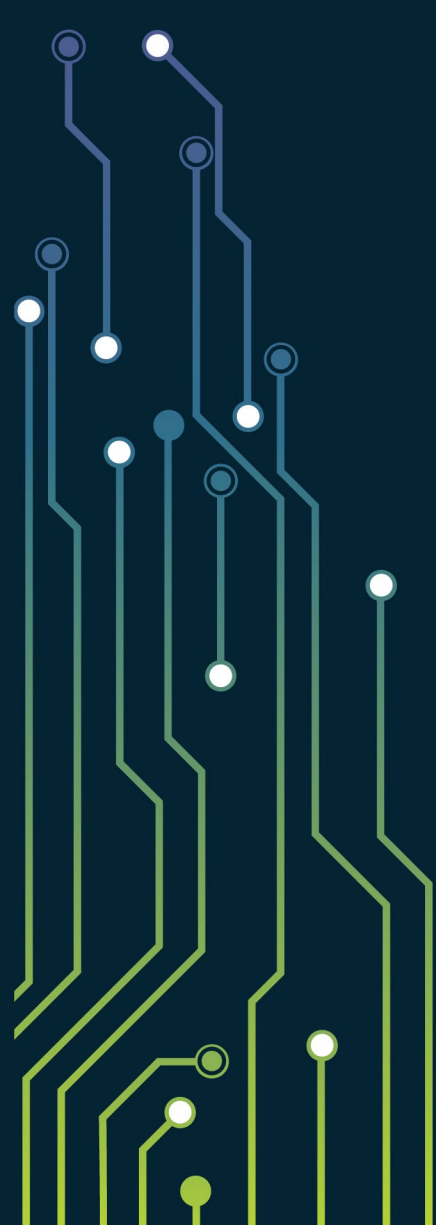
# DATA GROWTH IN PERSPECTIVE

*By 2010 we created as much  
information **every two days** as we did  
from the dawn of civilization up until  
2003*

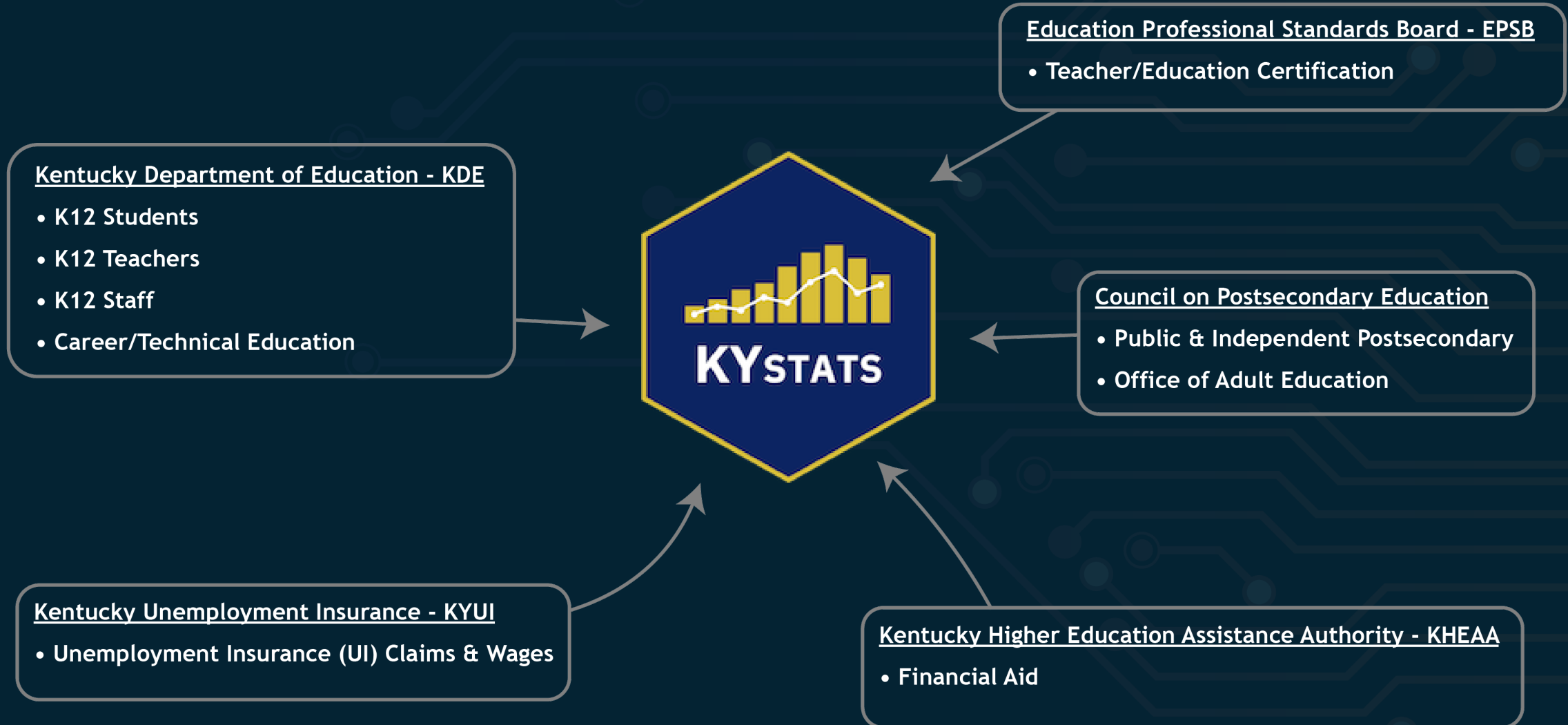
*-Eric Schmidt,  
Former Google CEO*



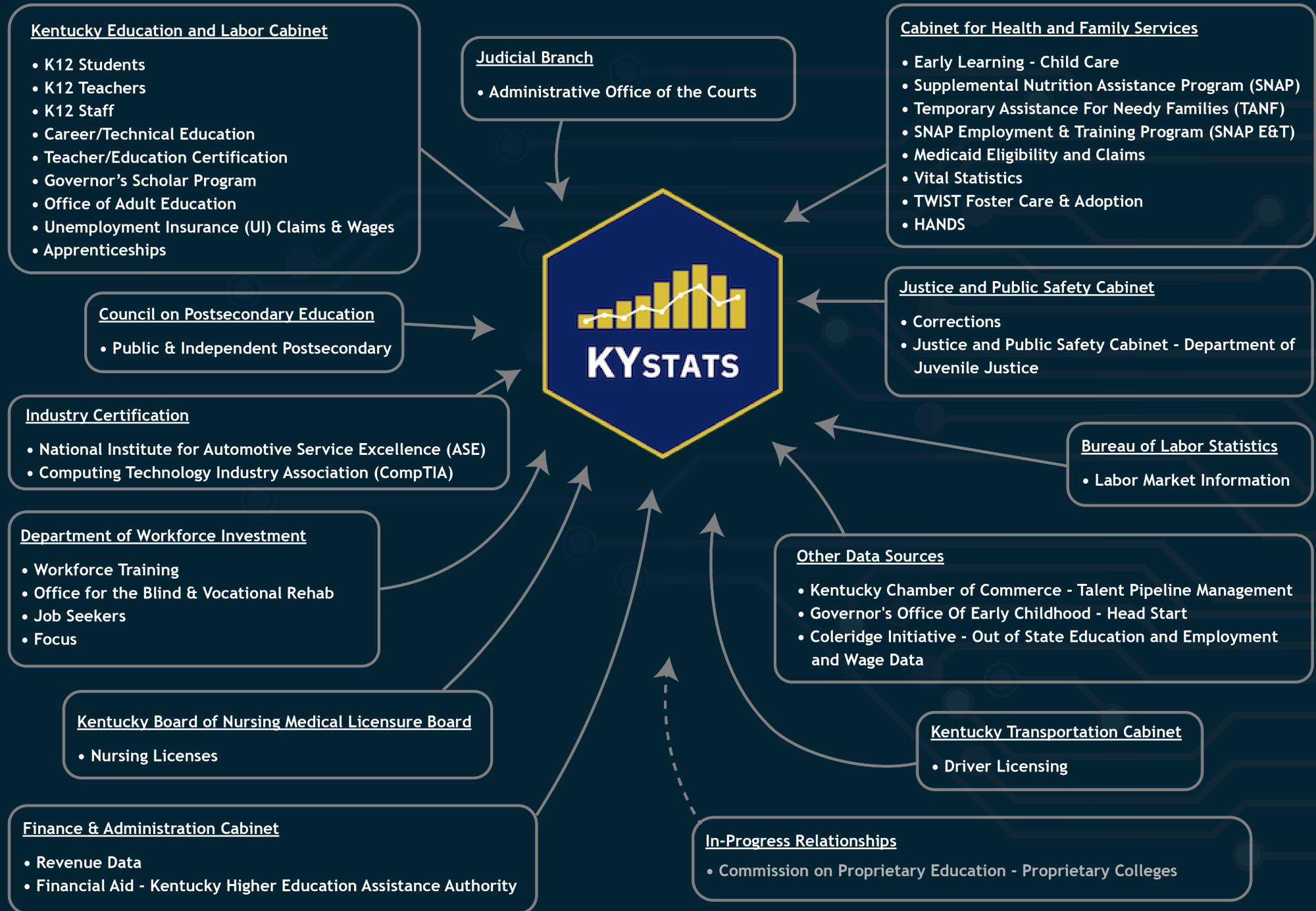
# DATA GROWTH IN PERSPECTIVE

- 
- By 2020, the number of bytes in the digital universe was **40 times bigger** than the number of stars in the observable universe.
  - The amount of data created daily is equivalent to 10 million Blu-ray discs, which when stacked would be **as tall as two Eiffel Towers combined.**
  - Stored data grows **5x faster** than the world economy.

# 2012 KLDS

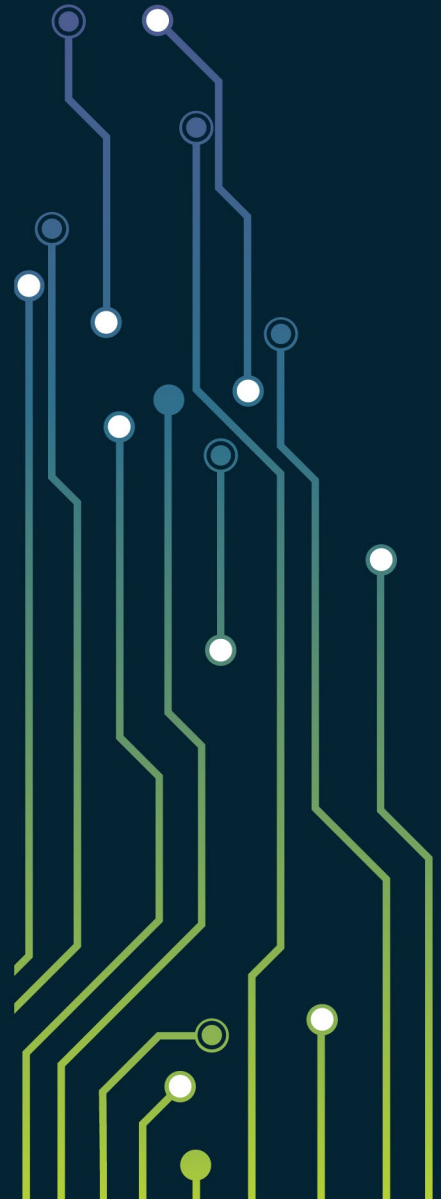






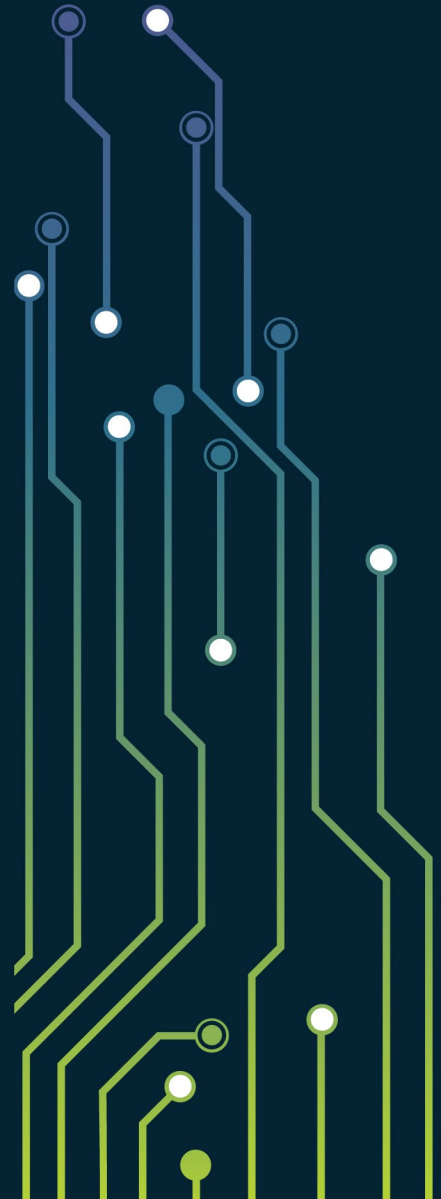
# KLDS TODAY

- 6,000 Active Data Elements
- 172 Unique File Types
- Data from 27 Agencies
- 47 Data Sources



# Since 2019

- 300 Reports
- 1,200 Information Requests Filled
- 3,000 Presentations, Trainings, & Stakeholder Meetings



# KYSTATS PRODUCTS

Adult Education

Career and Technical  
Education

Early Childhood

K-12

Postsecondary

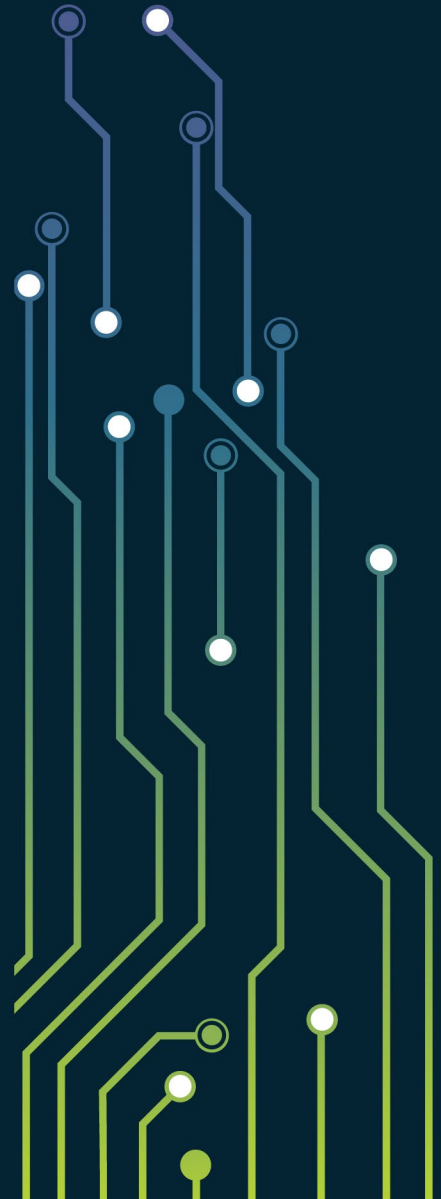
Workforce

Labor Market  
Information



# LOOKING TO THE FUTURE

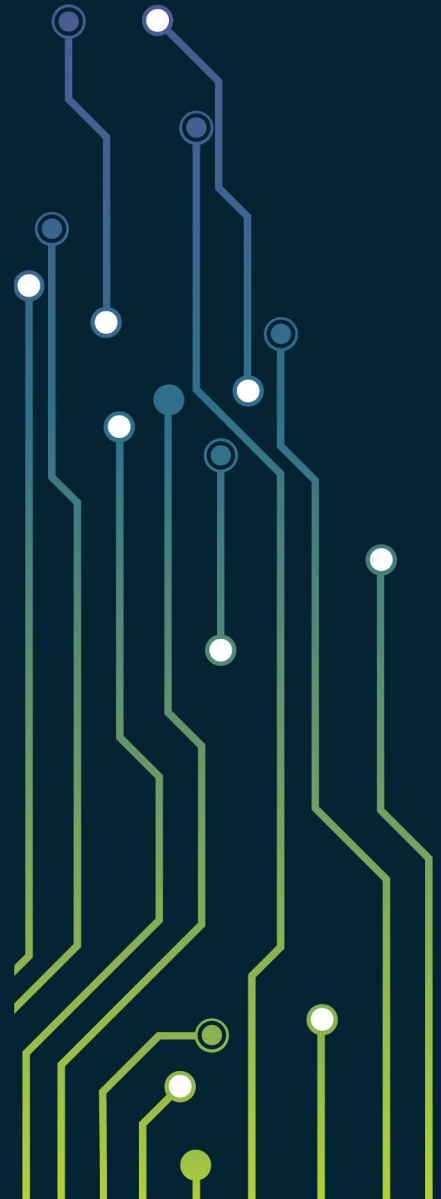
- Volume & Speed
- New Sources & Uses
- Security & Privacy
- The Application of AI
- The Democratization of Data



# DEMOCRATIZING DATA

*Public Data are **Foundational** to  
Our Democratic System*

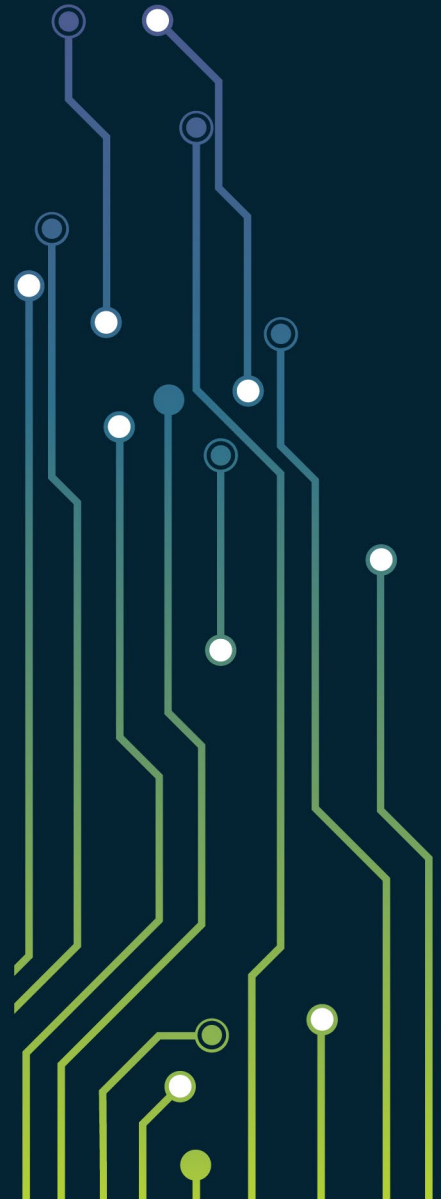
- Julie Lane,  
*Democratizing our Data*





# LOOKING TO THE FUTURE

...so policymakers, practitioners,  
and the general public can make  
better informed decisions.





# Kentucky has ...

**21,000 Registered Non-profits**

**2.1 Million Labor Force Participants**

**1.1 Million Youth**

**415 Cities & 120 Counties**

**4.5 Million Citizens**

**40,000 Adult Learners**

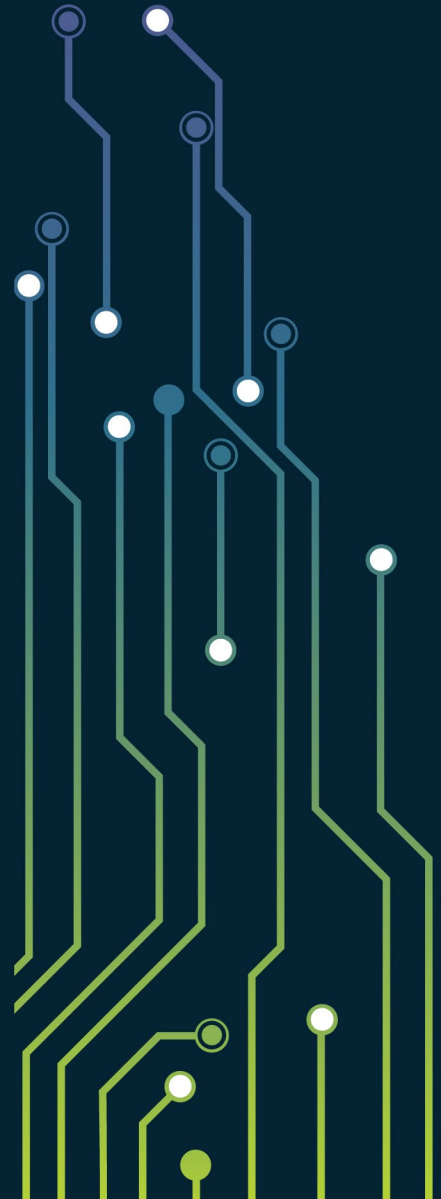
**115,000 Business Establishments**

**640,000 Students In 171 School Districts**

**250,000 Students In Postsecondary Education**

# LOOKING TO THE FUTURE

- Civic Data Hacks
- Data Literacy Curricula
- KYSTATS Research Labs



An abstract graphic on a dark blue background. A large white hexagon is centered. From the left and right sides of the hexagon, numerous circuit-like lines in yellow, green, blue, purple, and orange extend outwards. These lines are punctuated with small circles in various colors, some of which are glowing white. The overall aesthetic is futuristic and technological.

# **BEYOND '23**

Exploring the Future of KY's Data