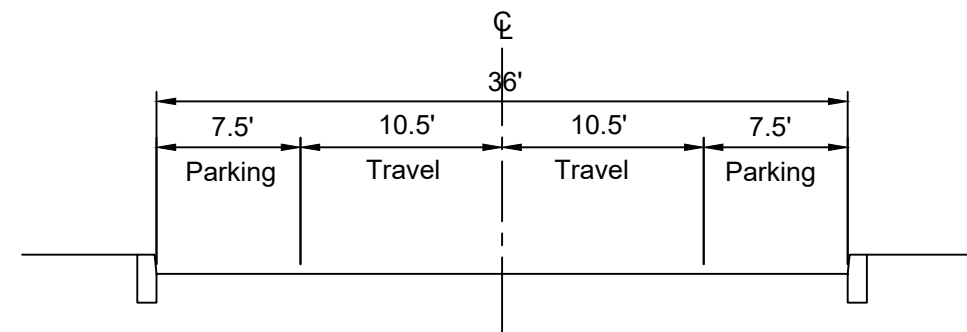




Begin

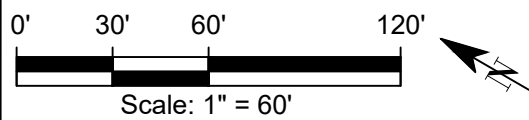
See Sheet 2

- (A) Paint, 4" Yellow Double Solid Line
- (B) Paint, 6" White Solid Line
- (C) Thermo, 6" White Solid Line
- (D) Thermo, 8" White Solid Line
- (E) Thermo, 24" White Solid Line



Central Ave - Typical Section

Notes:  
 1. Adjust Curb Extension Length As Needed To Maintain Access To Adjacent Entrances and Crosswalks.  
 2. Unless Specified Otherwise, 10' Diagonal Spacing for 8" Paint.

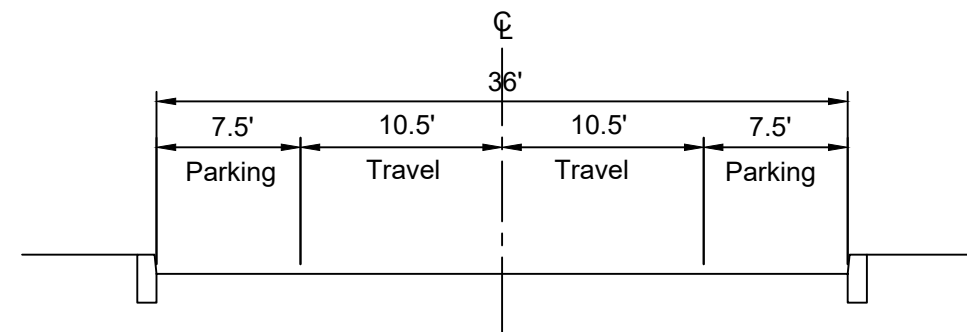




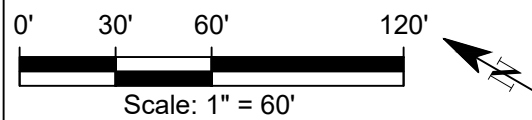
See Sheet 1

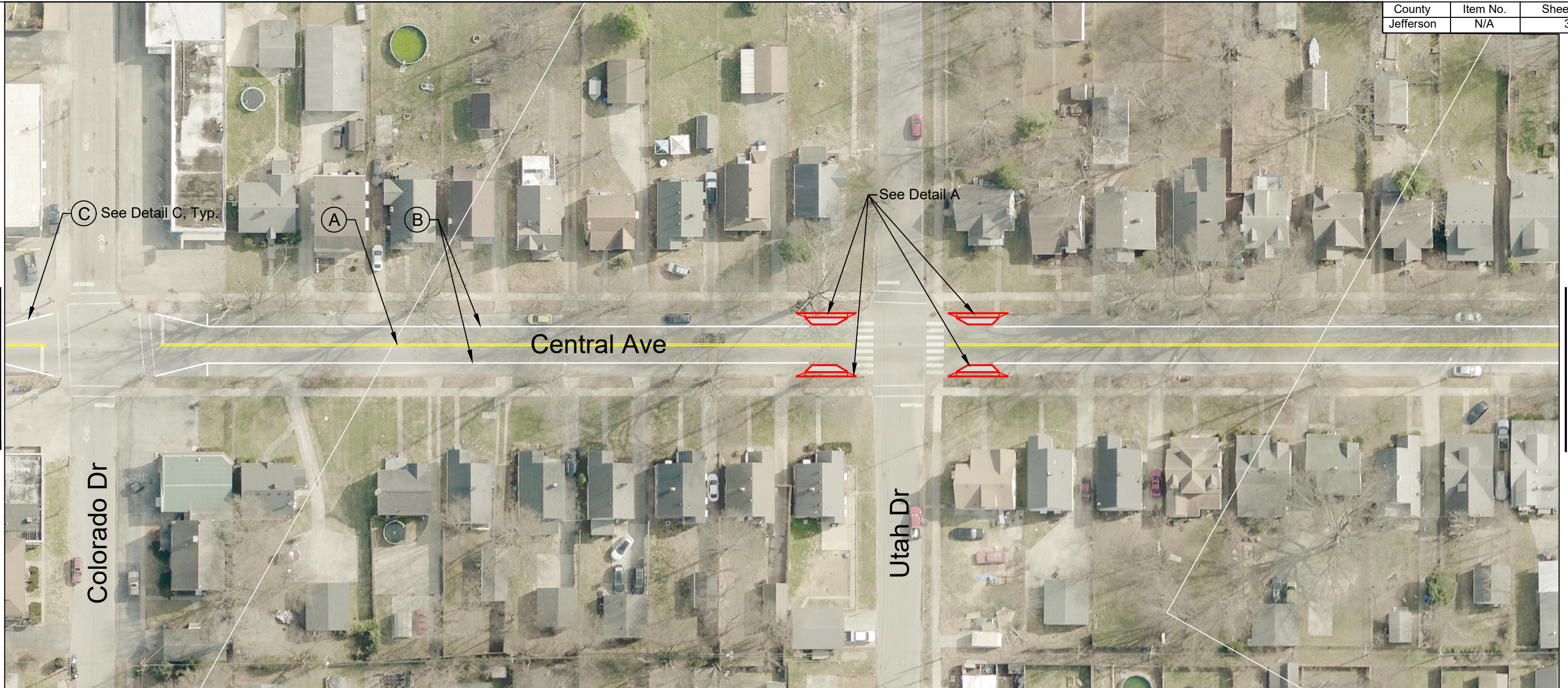
See Sheet 3

- (A) Paint, 4" Yellow Double Solid Line
- (B) Paint, 6" White Solid Line
- (C) Thermo, 6" White Solid Line
- (D) Thermo, 8" White Solid Line
- (E) Thermo, 24" White Solid Line

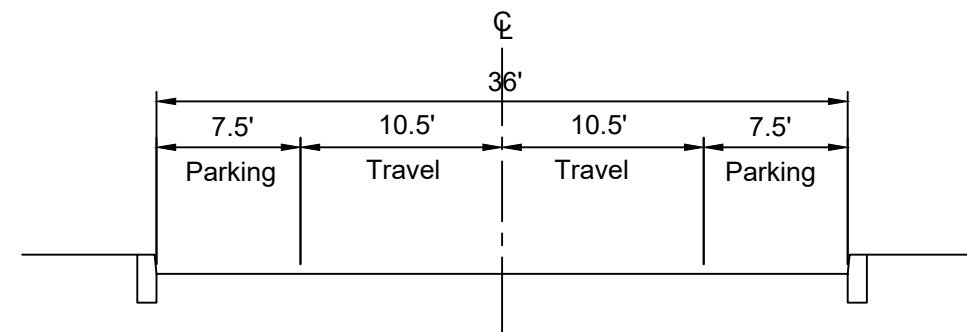


Central Ave - Typical Section

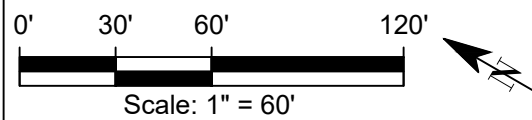




- (A) Paint, 4" Yellow Double Solid Line
- (B) Paint, 6" White Solid Line
- (C) Thermo, 6" White Solid Line
- (D) Thermo, 8" White Solid Line
- (E) Thermo, 24" White Solid Line



Central Ave - Typical Section

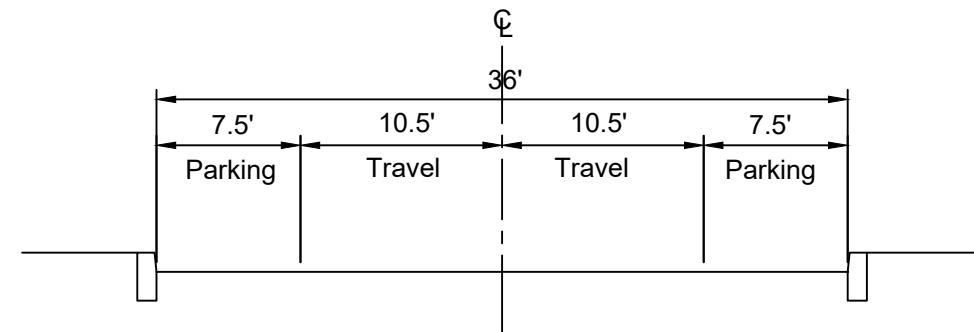




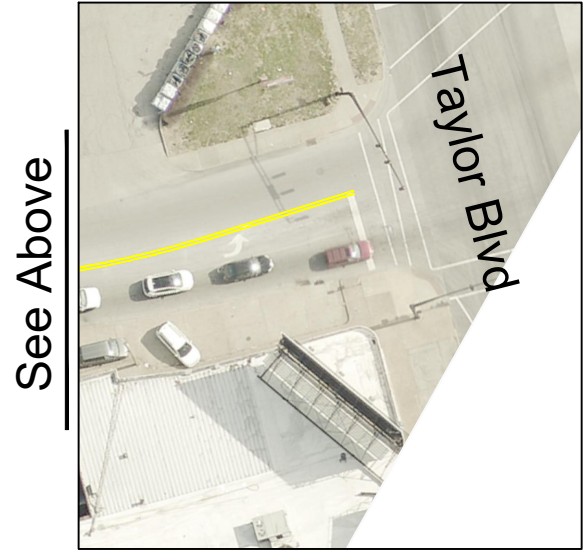
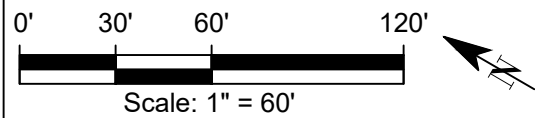
See Sheet 3

See Below

- (A) Paint, 4" Yellow Double Solid Line
- (B) Paint, 6" White Solid Line
- (C) Thermo, 6" White Solid Line
- (D) Thermo, 8" White Solid Line
- (E) Thermo, 24" White Solid Line

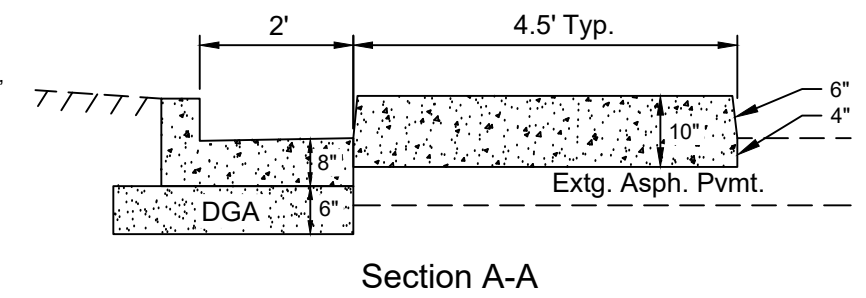
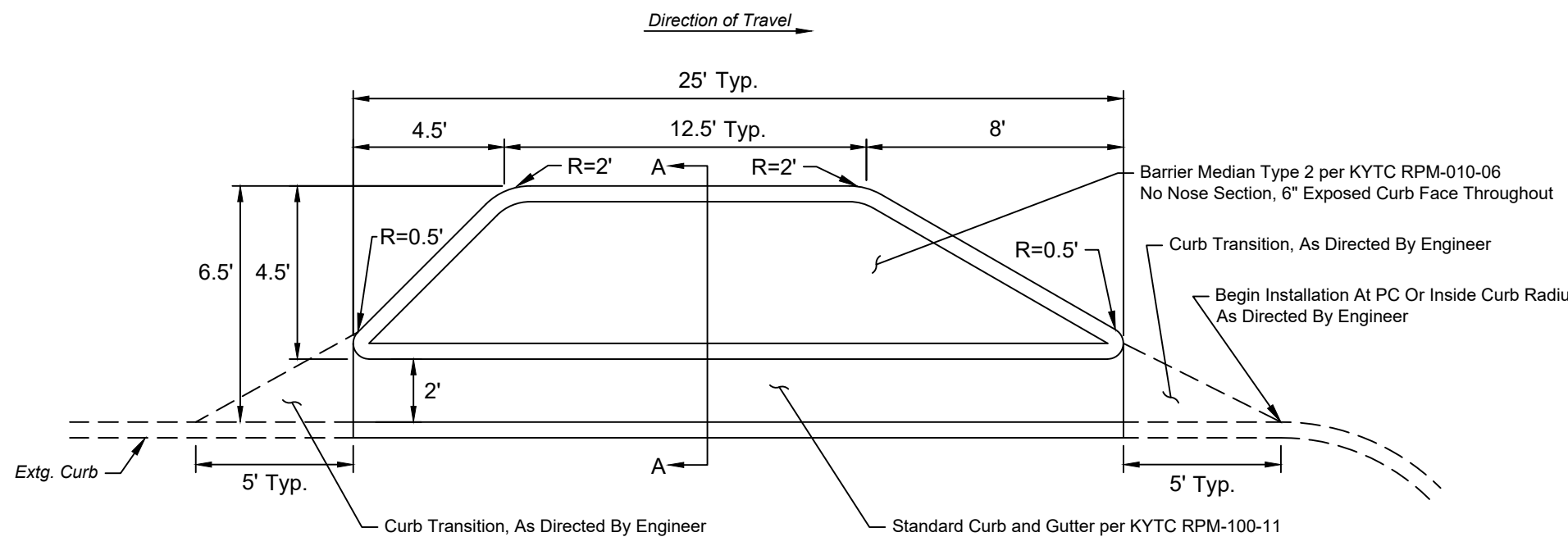


Central Ave - Typical Section

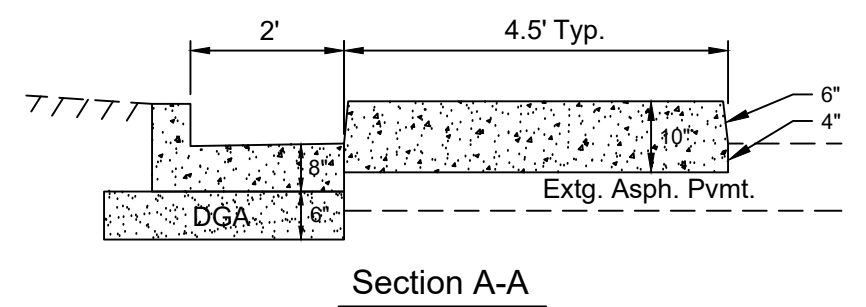
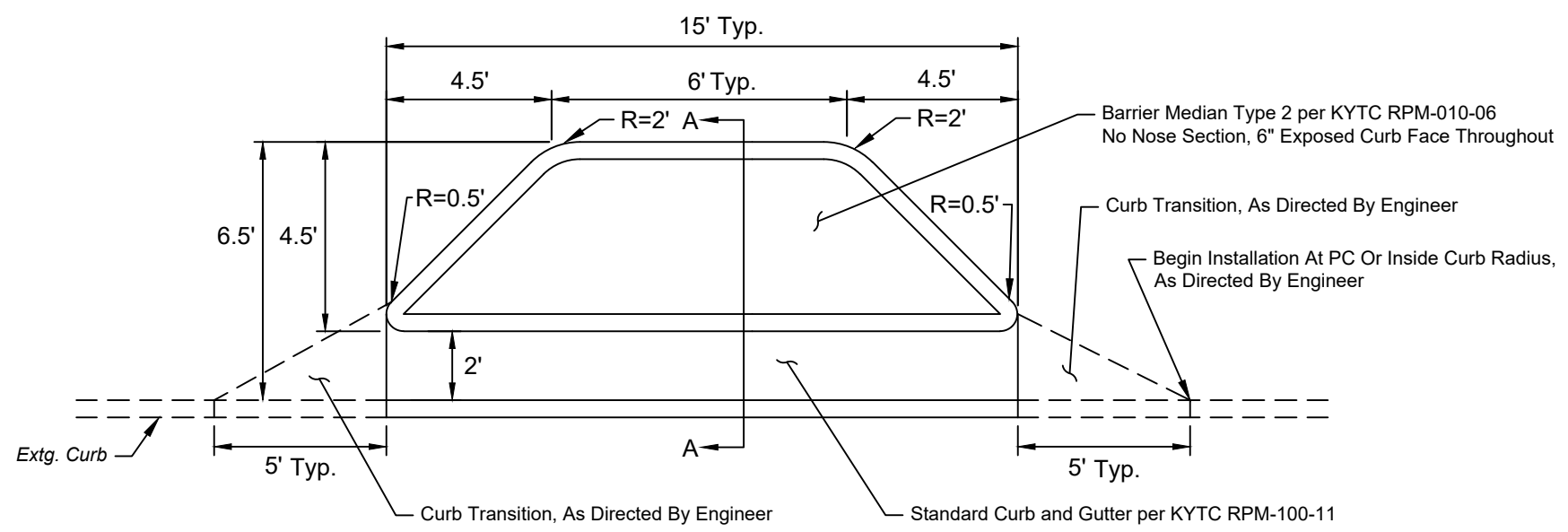


See Above

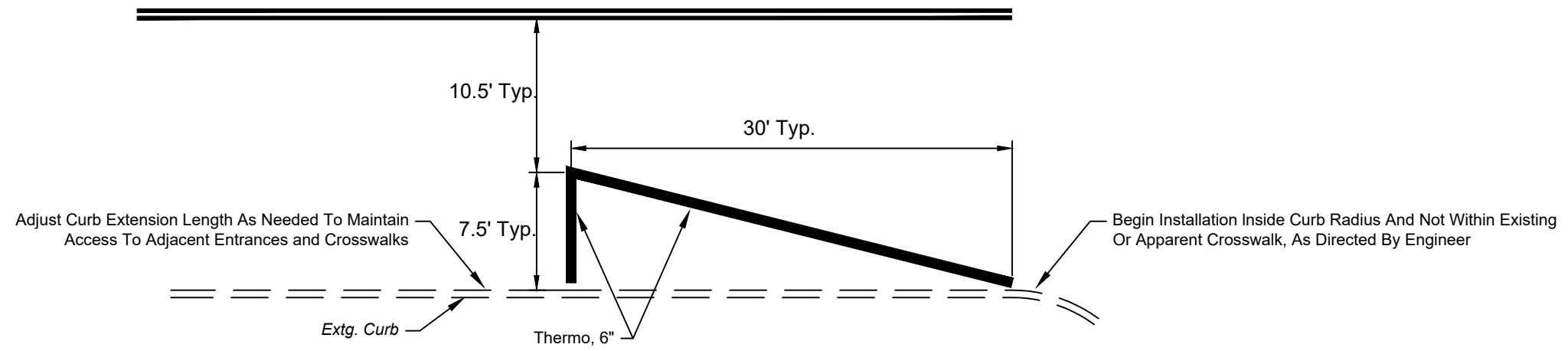
End



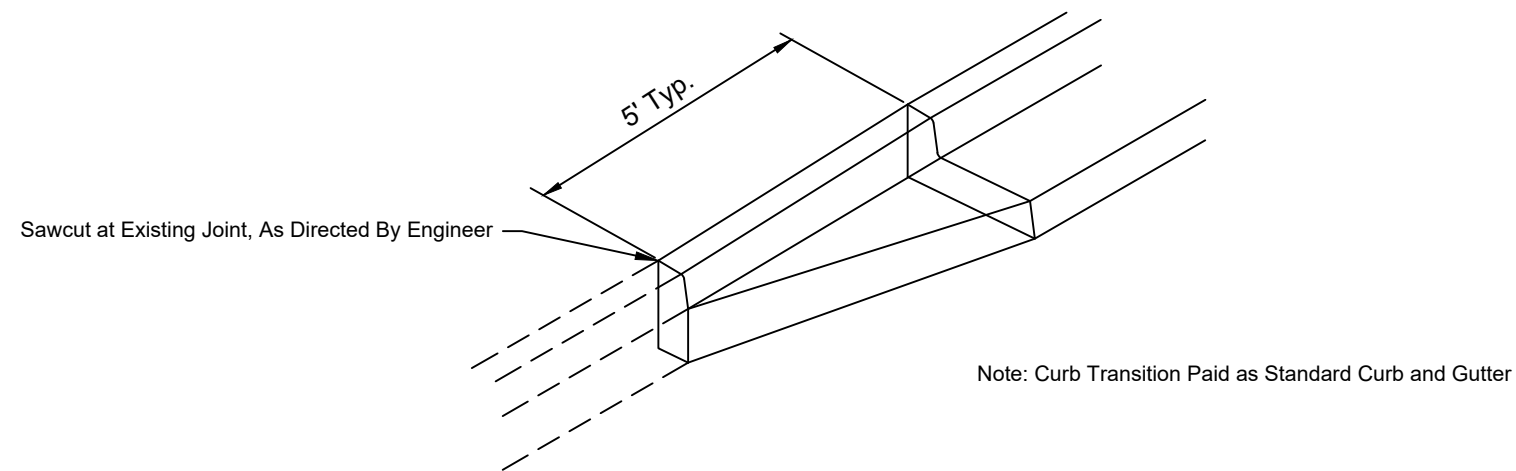
**A** Floating Concrete Island Curb Extension - 6.5' Offset



**B** Floating Concrete Island Curb Extension - Midblock - 6.5' Offset



**C** Paint Curb Extension - 7.5' Offset



**D** Curb Transition