

Jefferson County PVA

Motor Vehicles



You Have A Right to Appeal

If your vehicle has higher-than-average miles for its model year and/or mechanical or body damage, you may qualify for an adjustment in value.

How Value is Determined:

Motor vehicle value is based on the industry-standard J.D. Power/NADA Guide "Clean Trade-In" value for vehicles with an average of 10,000 miles driven per year, as of January 1st of each year. If your vehicle has higher annual mileage, mechanical or body damage, we encourage you to appeal.

How to Appeal:

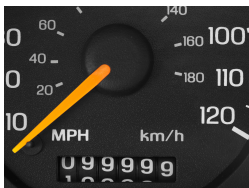
When: Appeals must be filed before your vehicle's tax payment due date. You don't have to wait for your tax notice, you can file an appeal as early as January 1st.

Steps:

1. Start your appeal using the convenient **online portal** at www.jeffersonpva.ky.gov or download and print the affidavit from the "Forms & Tools" section of the website.
2. Include documentation supporting your appeal:
 - **Evidence of High Mileage:** A copy of a recent service record, dated Jan 1st or later with mileage listed, or a dated photograph of your odometer.
 - **Evidence of Mechanical or Body Damage:** An estimate of repair from a professional/licensed mechanic or body shop and dated photos of relevant body damage.
3. Submit the appeal application in the online portal, or send the printed affidavit and supporting documentation to our office:

Online Motor Vehicle Appeal Portal
jeffersonpva.ky.gov

By Mail, or In Person:
Jefferson County PVA
Motor Vehicles Department
815 W. Market St. Suite 400
Louisville, KY 40202



Our Mission:

To provide fair and equitable assessments with best-in-class customer service.

Colleen Younger
Jefferson County
Property Valuation Administrator

Questions?

Please Contact Our Motor Vehicle Department:

502-574-6450
motorvehicle@jeffersonpva.ky.gov
Online Chat (9am-3:30pm):
www.jeffersonpva.ky.gov