

TAKE THE INDIANA SPEED TEST

Indiana Broadband Strategic Partnership

Why take this speed test?

We need your help! In order to give communities in our region the best chance for future broadband funding, we need data that reflects where the actual gaps in broadband connectivity exist. There are multiple federal and state broadband funding programs for which having speed test data collected is extremely helpful.

Please ensure your mobile data and VPN are turned OFF when conducting a speed test on your cell phone!



Hide/Unhide Data

- No Service
- <10 M down
- <25 M down
- ≥ 25 M down
- ≥ 500 M down

County Group Data

Total Tests in View: 36,907. 29,608 unique locations.

County: Shelby County

Households: 19,080 Locations: 153

Sample: Sub-Sample 1 of 4

| company | year | count | down | up | delta | C.I. |
|---------|------|-------|-------|------|-------|------|
| | 2021 | 4 | 29.37 | 4.78 | | 0.0 |

Help Fill the Indiana Speed Test Map today!

Let's get as many dots on the map for Shelby County as possible. The more data dots, the more this can help to improve broadband for our communities.

Visit <https://www.infarmbureau.org/resources/broadband-speed-test> to take a test or use the QR code below.

1.31% unserved of sample

Shelby County Broadband and Digital Inclusion Taskforce

Who we are

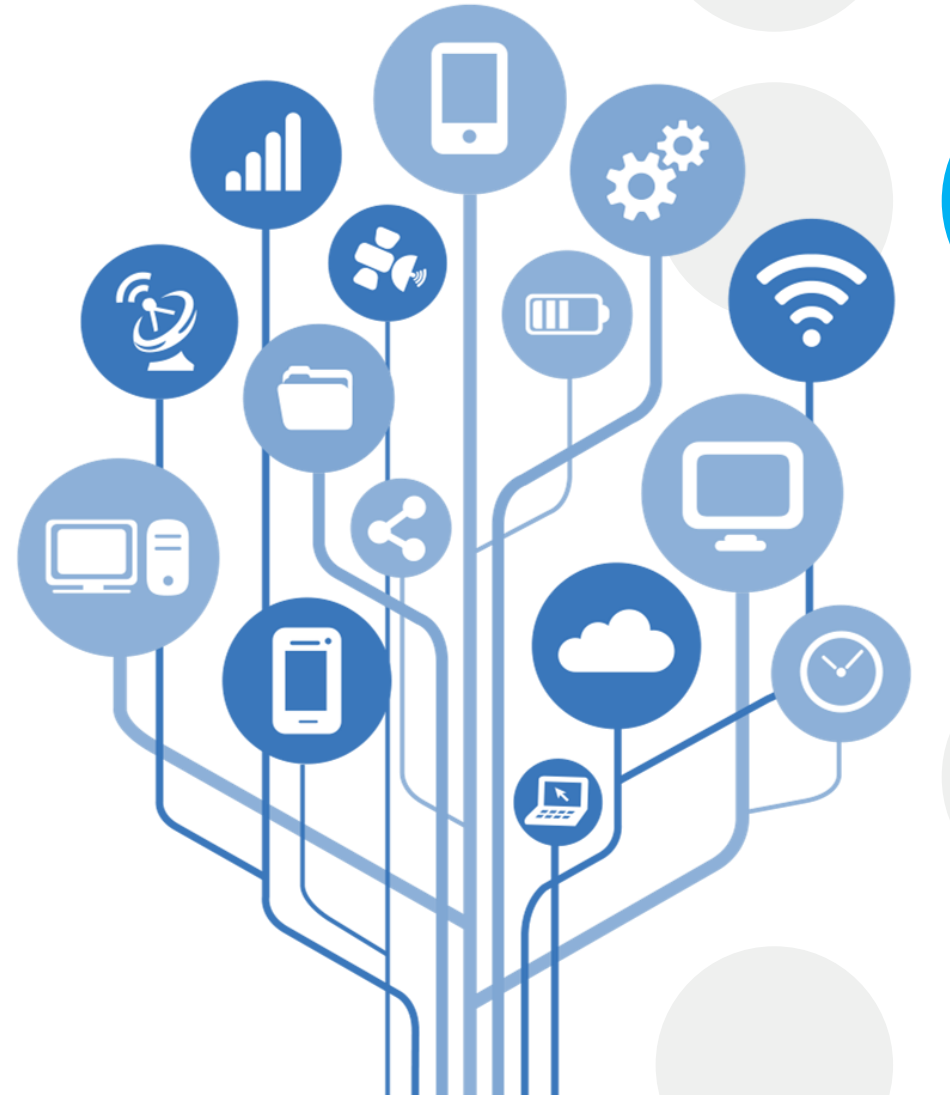
A group of community leaders representing different sectors, (government, economic development, non-profit, education, etc.), from Shelby County. We were brought together via the efforts of Shelby County government and the Southeastern Indiana Regional Planning Commission.

What we do

We are working together on behalf of our neighbors to identify areas of need where adequate broadband and digital literacy are lacking in an attempt to close those gaps. The Taskforce advocates for its communities to government officials and internet service providers in hopes to facilitate partnerships between these entities and residential/business communities.

Why

There is so much untapped potential in Shelby County in regards to internet connectivity and digital skilling. We don't want to see our communities fall behind!



SHELBY COUNTY
—INDIANA—

