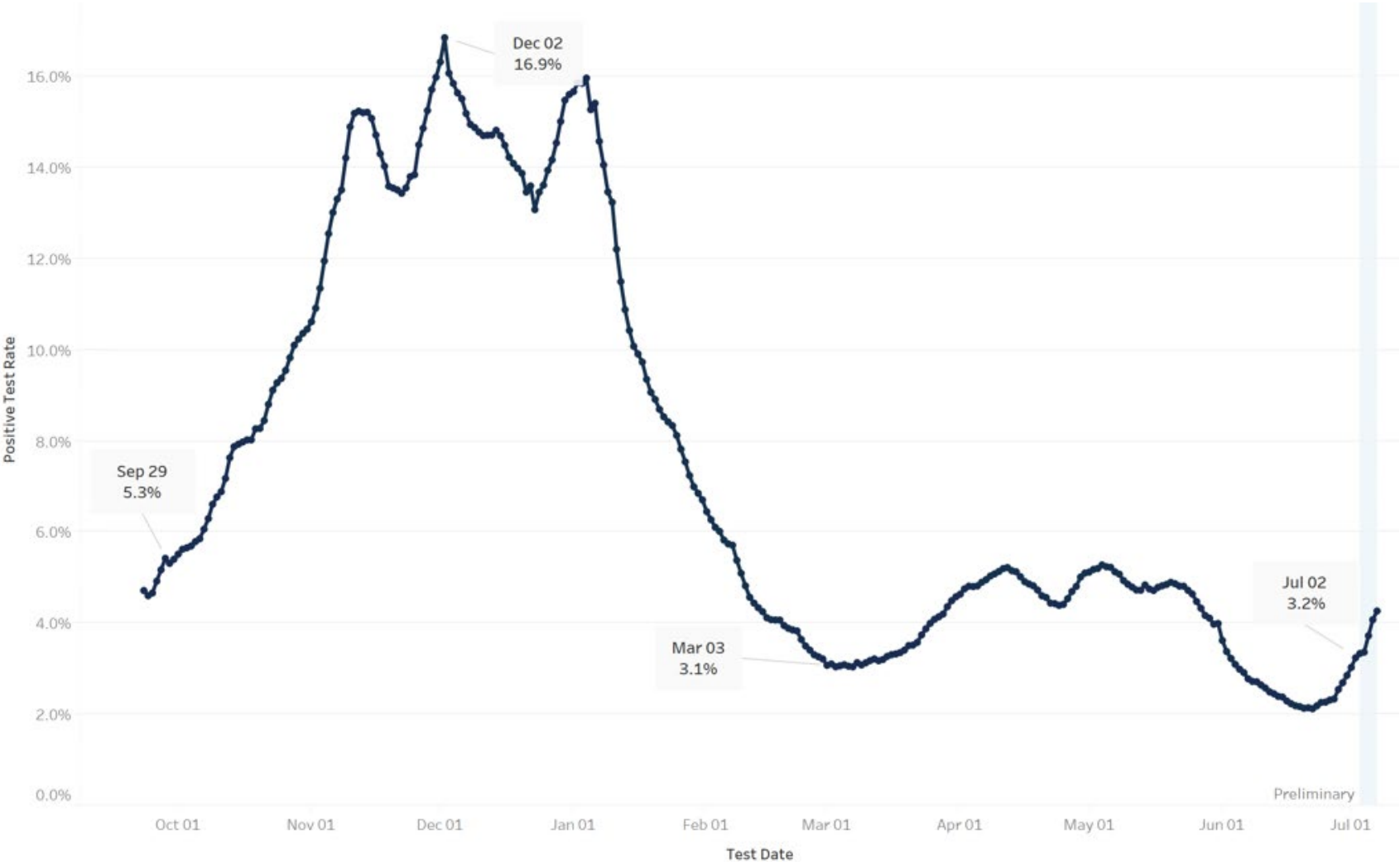
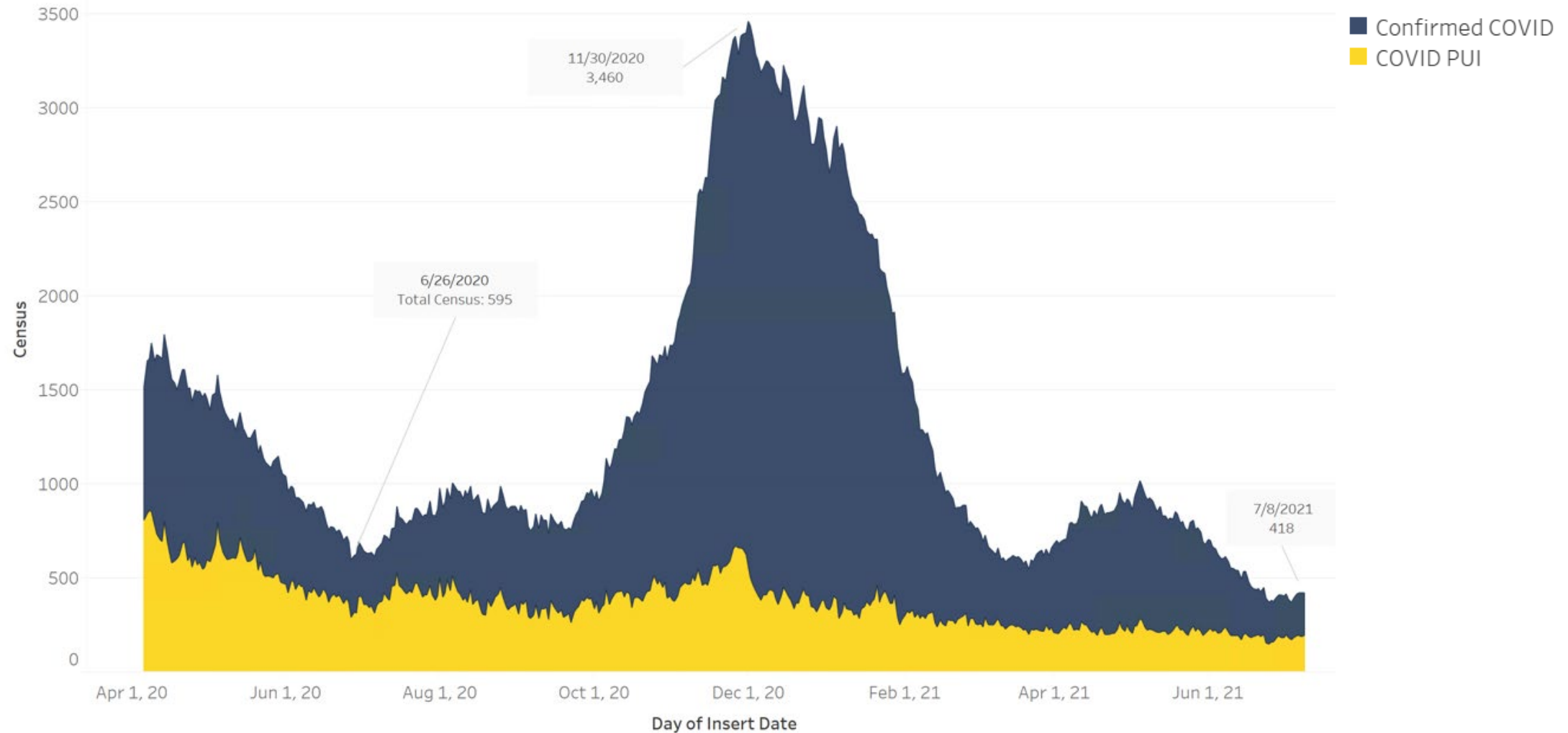


Positivity Rate



Statewide COVID-19 Hospital Census



Variant cases in Indiana

% of Samples Positive for Variant

62.4

Total Variant Cases

5,203

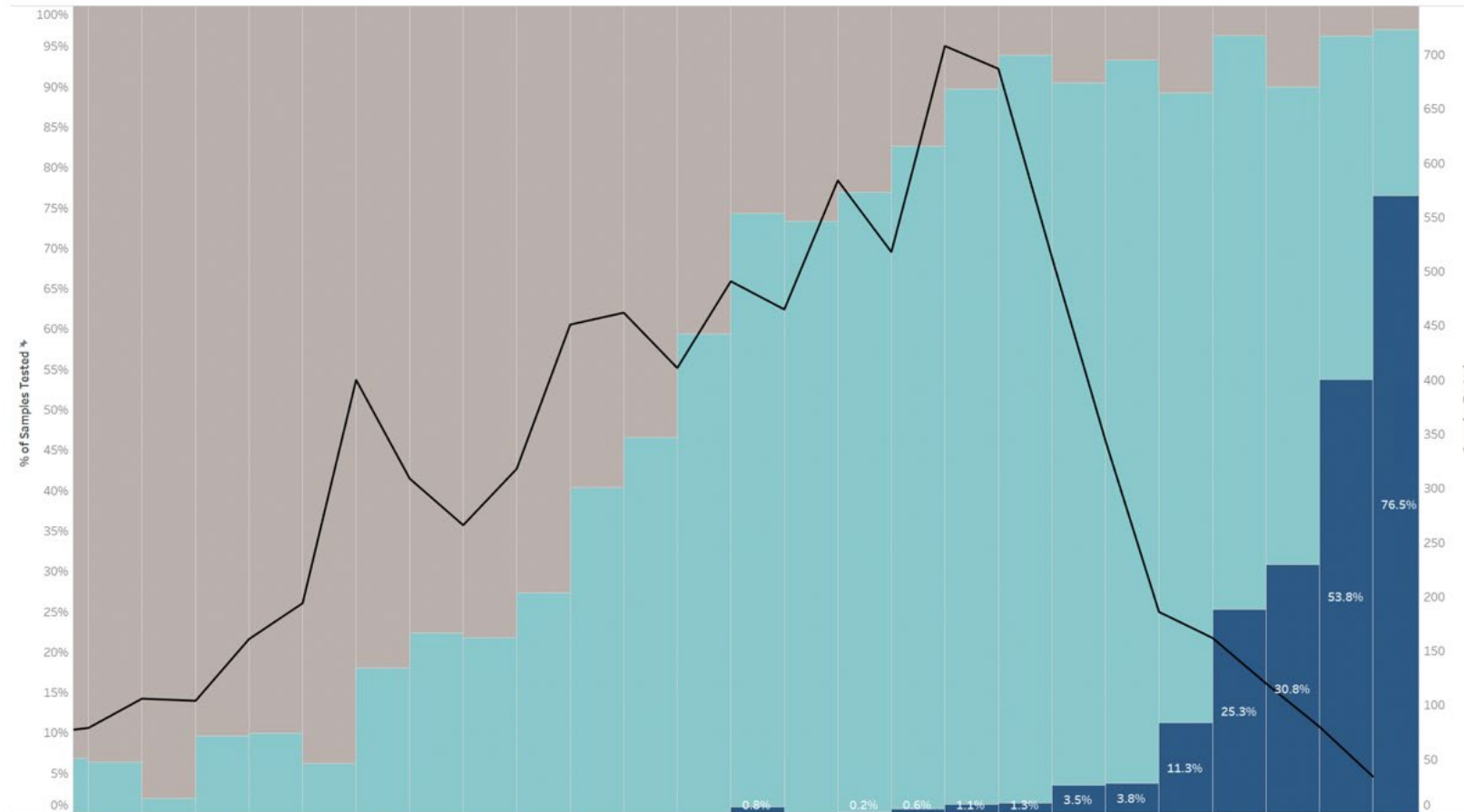
Variant	Case Count
Alpha / B.1.1.7	3,989
Gamma / P.1	534
Epsilon / B.1.427/B.1.429	418
Delta / B.1.617.2	233
Beta / B.1.351	29

Variant testing

Variant Testing 6/11/2021 - 7/8/2021

Variant Strain Name	Strain Detected	Percent of Tests
Alpha	46	32.17%
Delta	80	55.94%
Gamma	5	3.50%

Delta variant in Indiana



Variant Strain Name

■ Non-Variant

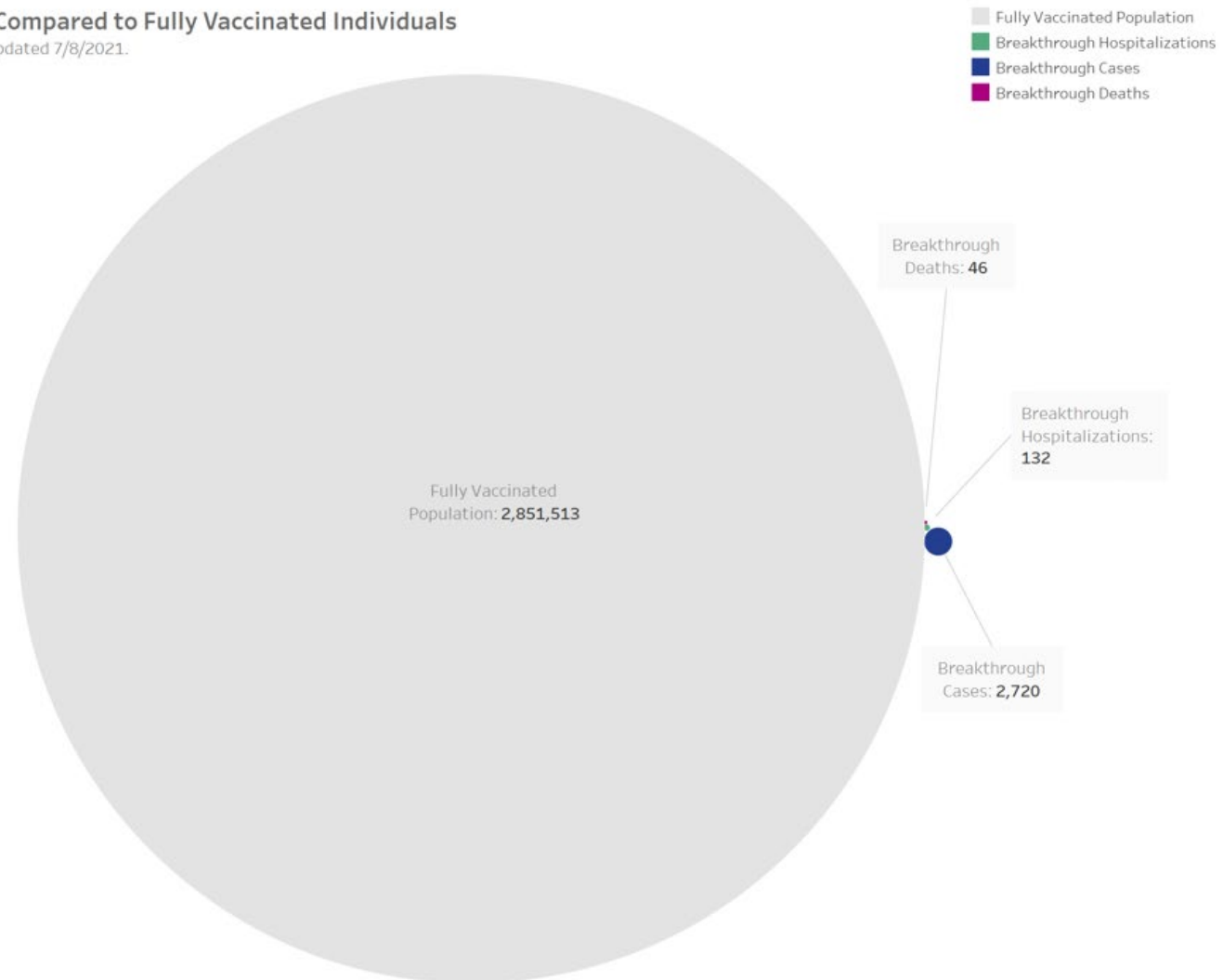
■ Other Variant

■ Delta Variant

Breakthrough cases in Indiana

Breakthrough Counts Compared to Fully Vaccinated Individuals

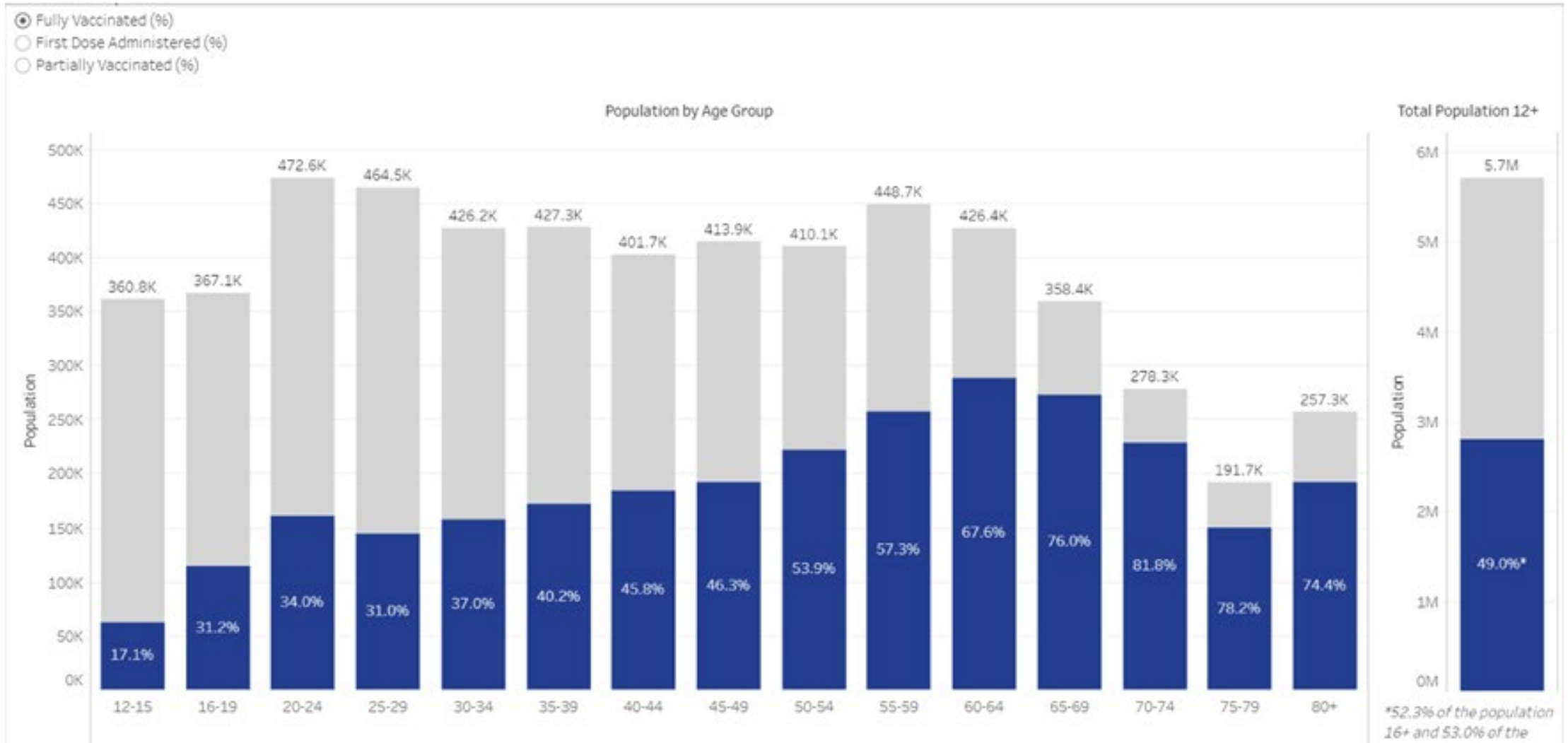
Compare cohort sizes to scale. Updated 7/8/2021.



Breakthrough case deaths in Indiana

Breakthrough Deaths Summary Stats	
Mean Age	78.87
Median Age	81
Max Age	100
Min Age	37
% Over 65	91.30%
% Over 75	69.57%
% Over 80	56.52%
% Over 85	23.91%

COVID-19 vaccination rates



Predicted cases vs. myocarditis cases

Females 12–17 Years



8,500 COVID-19 cases prevented



183 hospitalizations prevented



38 ICU admissions prevented

1 death prevented

8–10 myocarditis cases



Males 12–17 Years



5,700 COVID-19 cases prevented



215 hospitalizations prevented



71 ICU admissions prevented

2 deaths prevented

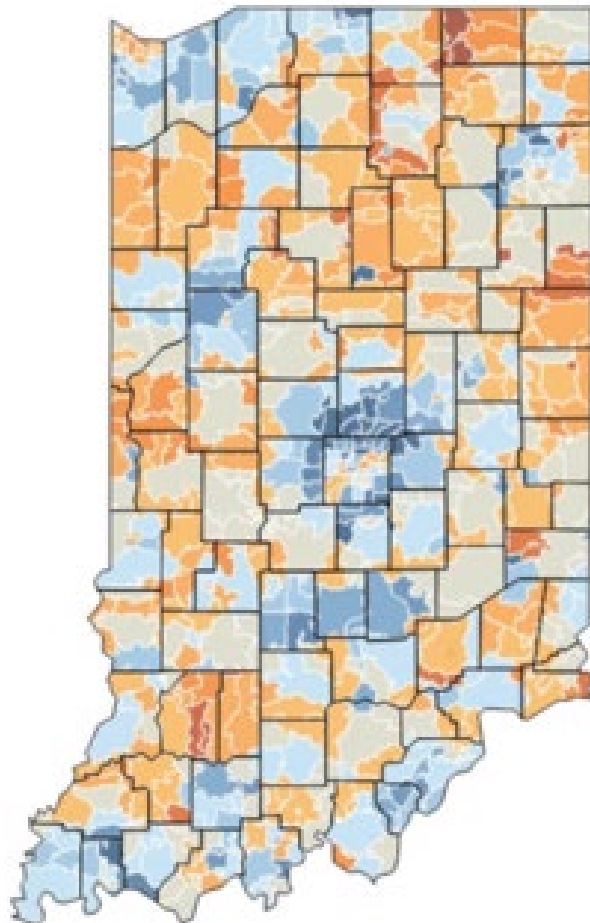
56–69 myocarditis cases



Vaccine uptake by ZIP code

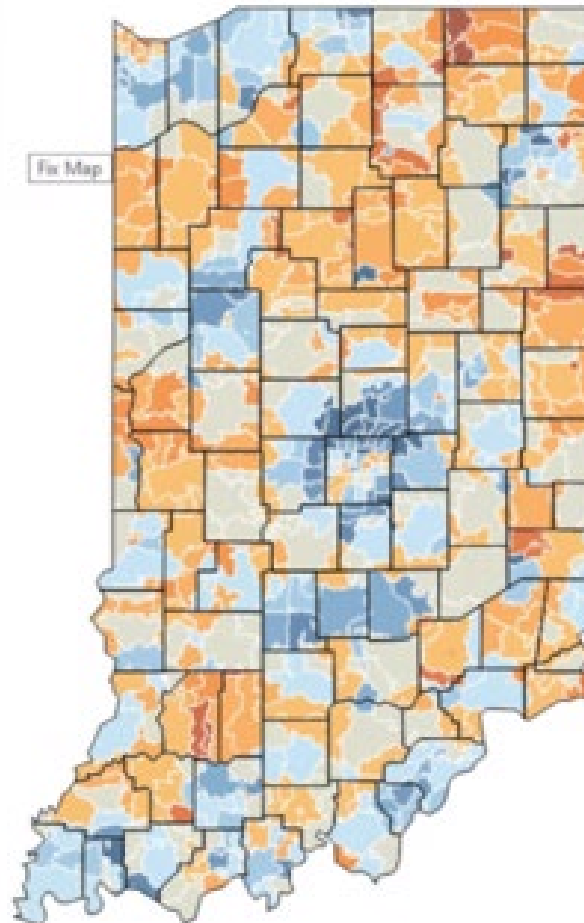
All Time

Includes vaccinations from all time



Previous Week

Includes vaccinations through 6/22/2021



Percent of Population,
16 and Over, Fully
Vaccinated by ZIP Code

