

# Variant cases in Indiana

% of Samples Positive for Variant

54.5

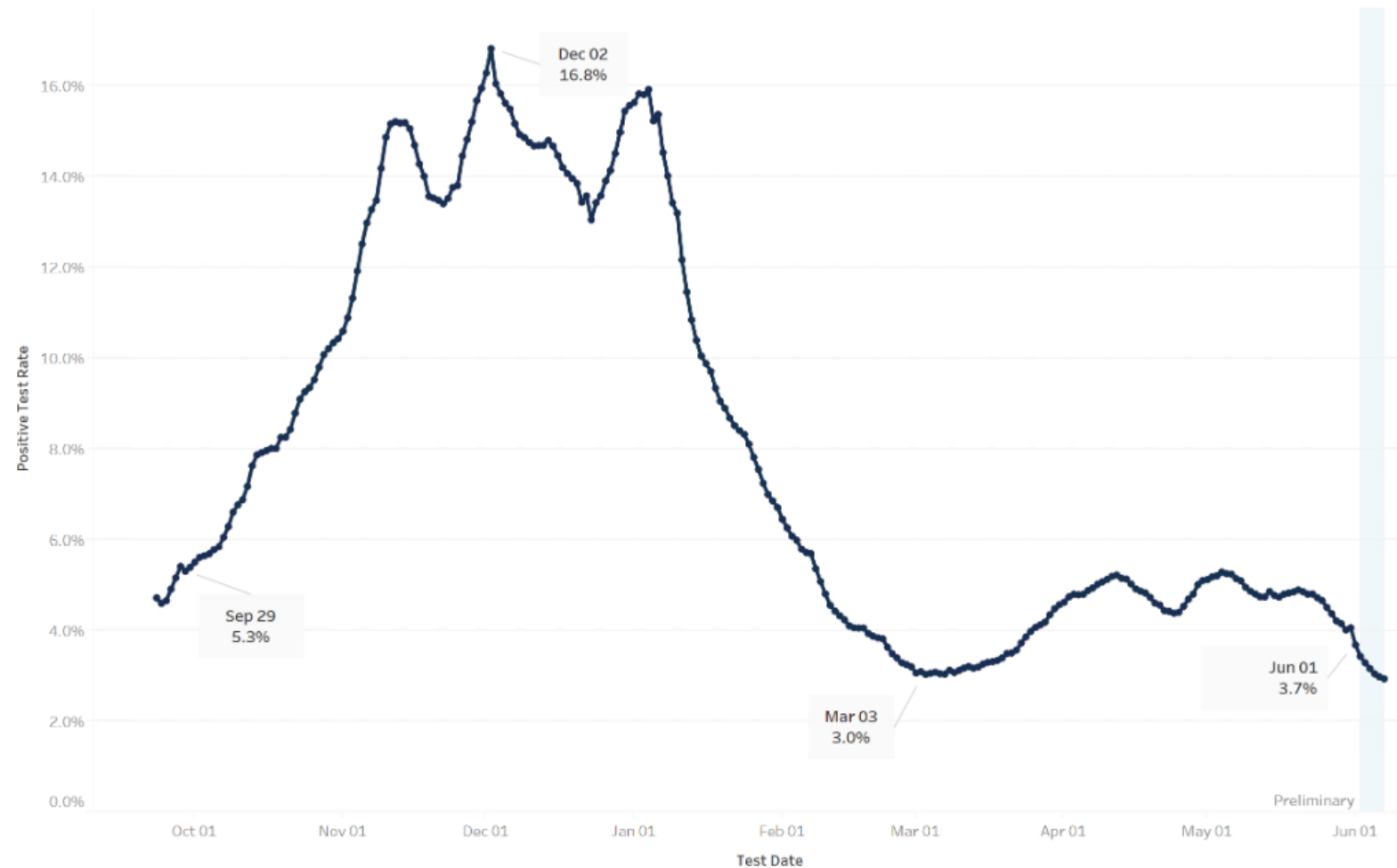
Total Variant Cases

3,648

Variant	Case Count
B.1.1.7 (originally identified in the UK)	2,948
P.1 (originally identified in Brazil)	391
B.1.427/B.1.429 (originally identified in California)	282
B.1.351 (originally identified in South Africa)	27

# Positivity Rate

Statewide Daily Positive Test Rate, All Tests  
7-Day Moving Average, September 23, 2020 to Present

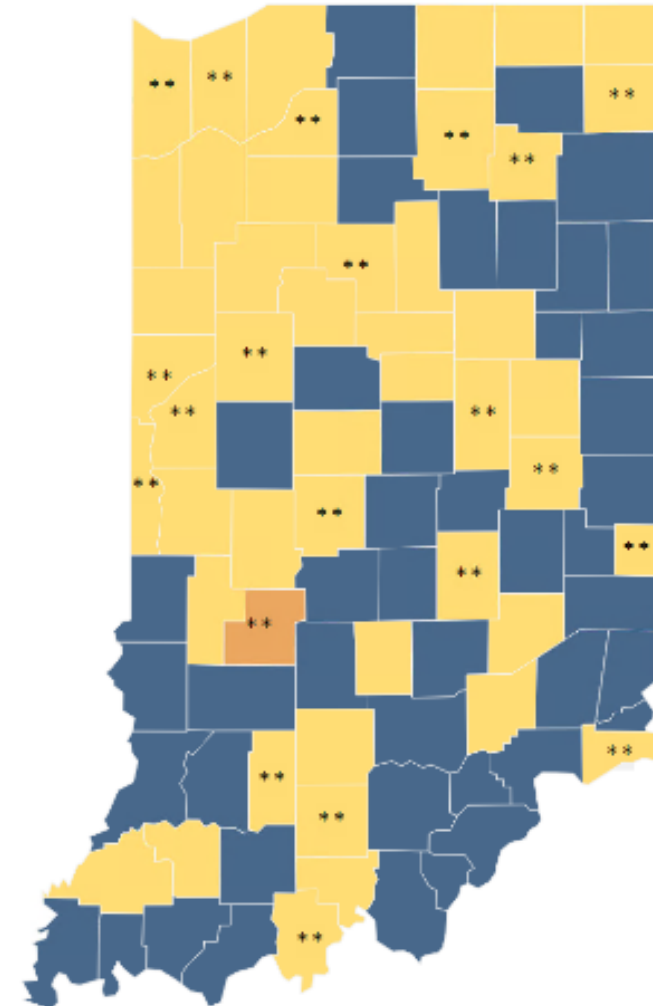
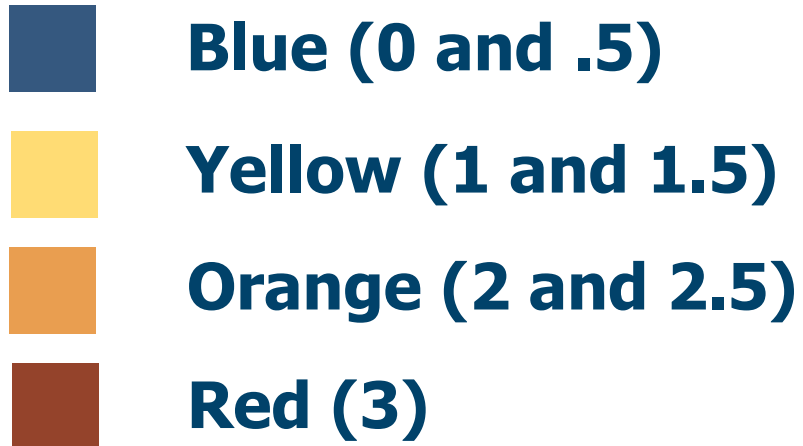


# County metrics map

Information for schools, local officials

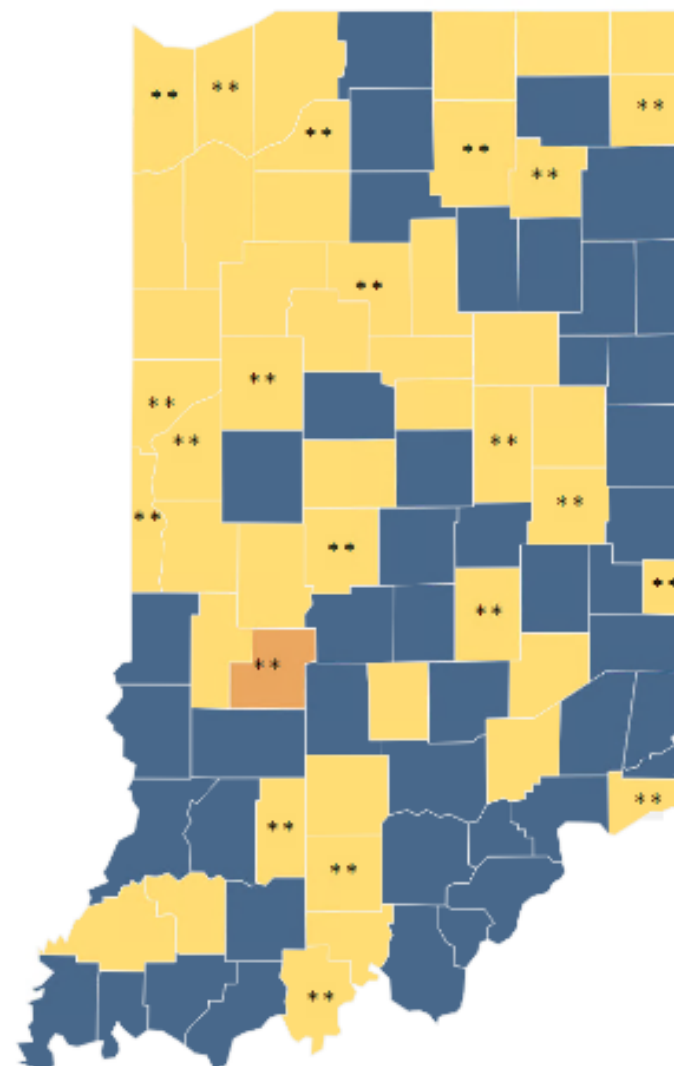
**June 9**

**The metrics:**

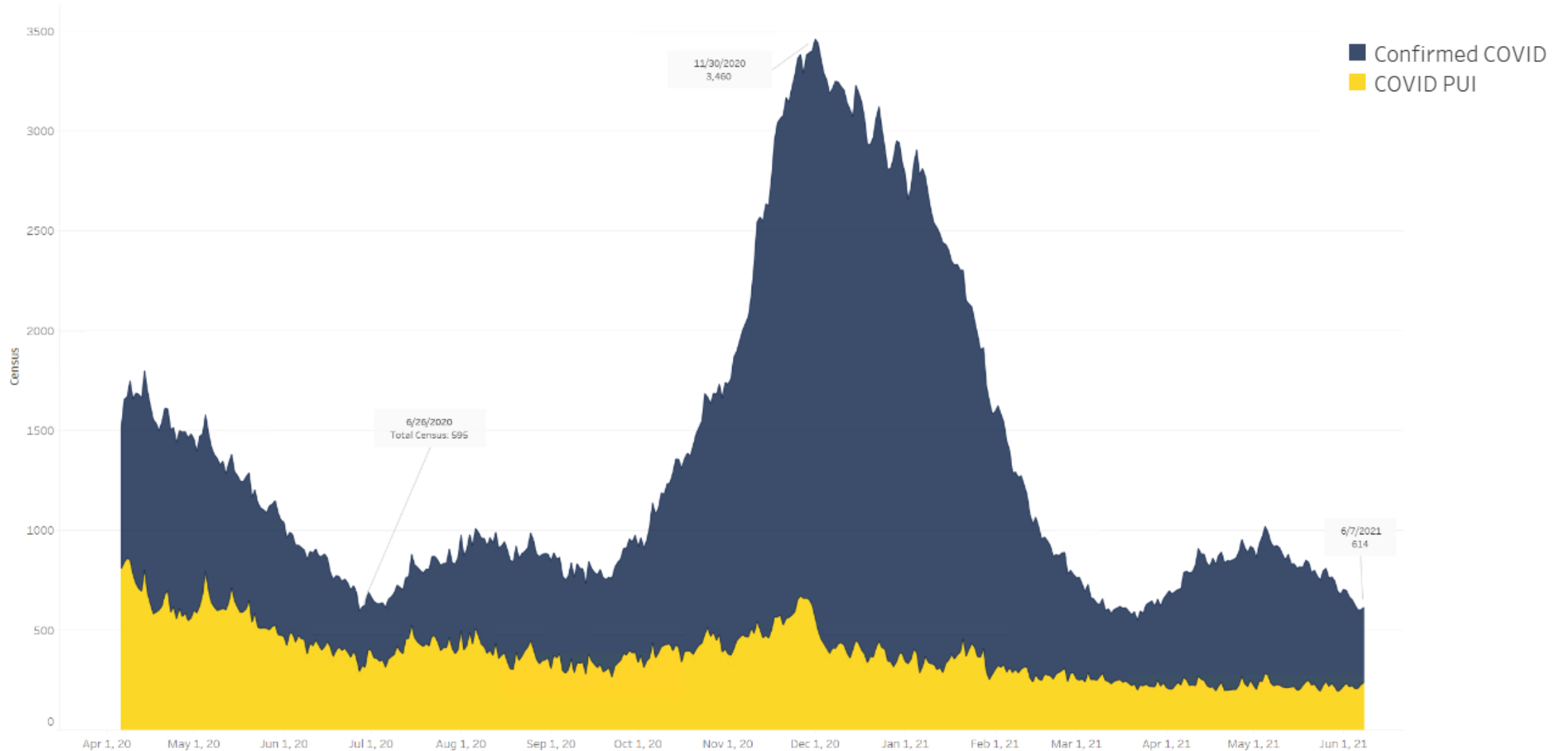


# June 9

## Current Advisory Level

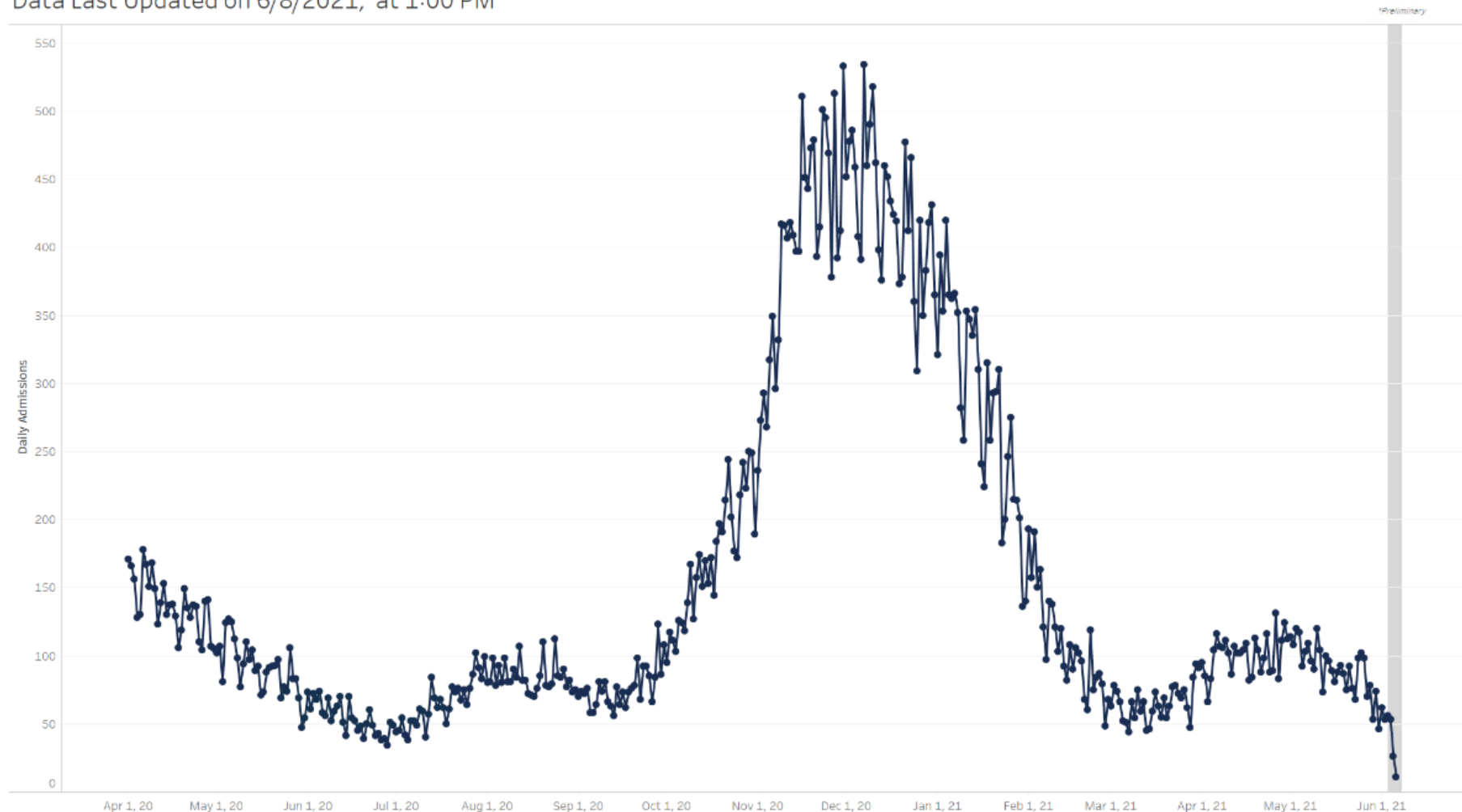


# Statewide COVID-19 Hospital Census



# Statewide COVID-19 Hospital Admissions

Number of Daily Inpatient Admissions for COVID-19 Positive Individuals  
Data Last Updated on 6/8/2021, at 1:00 PM



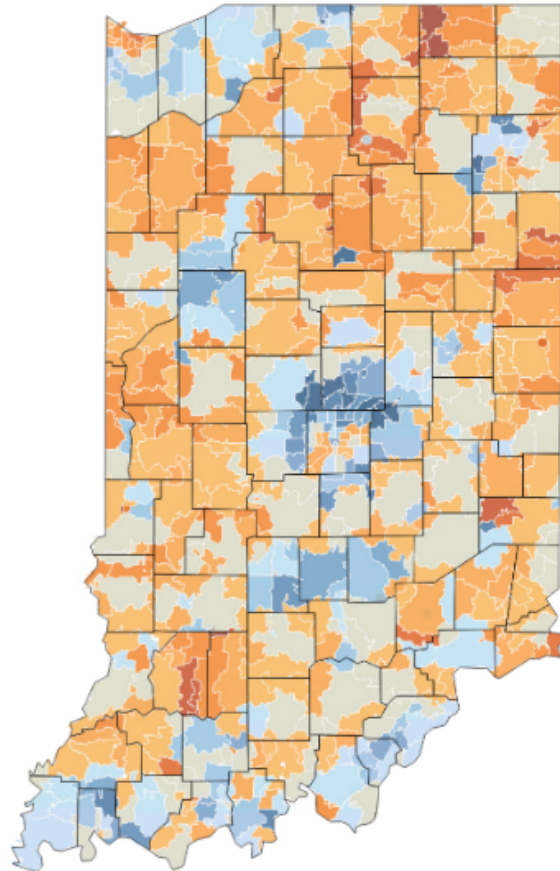
# Vaccine uptake by ZIP code

## Percent of Residents (Age 12+) Fully Vaccinated for COVID-19 by ZIP Code

Current as of 6/8/2021 5:00 AM EST

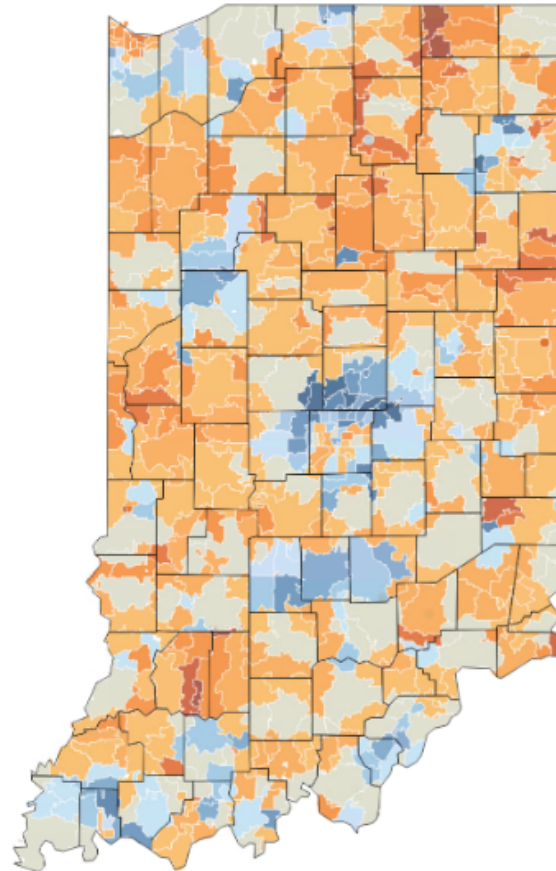
### All Time

Includes vaccinations from all time



### Previous Week

Includes vaccinations through 6/1/2021



### Percent of Population (12+)

- 0% - 15%
- >15% - 20%
- >20% - 25%
- >25% - 30%
- >30% - 35%
- >35% - 40%
- >40% - 45%
- >45% - 50%
- >50% - 55%
- >55% - 60%
- >60% - 65%
- >65% - 70%
- >70%

# MIS-C cases

Total Confirmed Cases

**93**

Age Range

**0-20 (Mean 9.7)**

Gender Distribution

**34.4% Female / 65.6% Male**

Race

Ethnicity

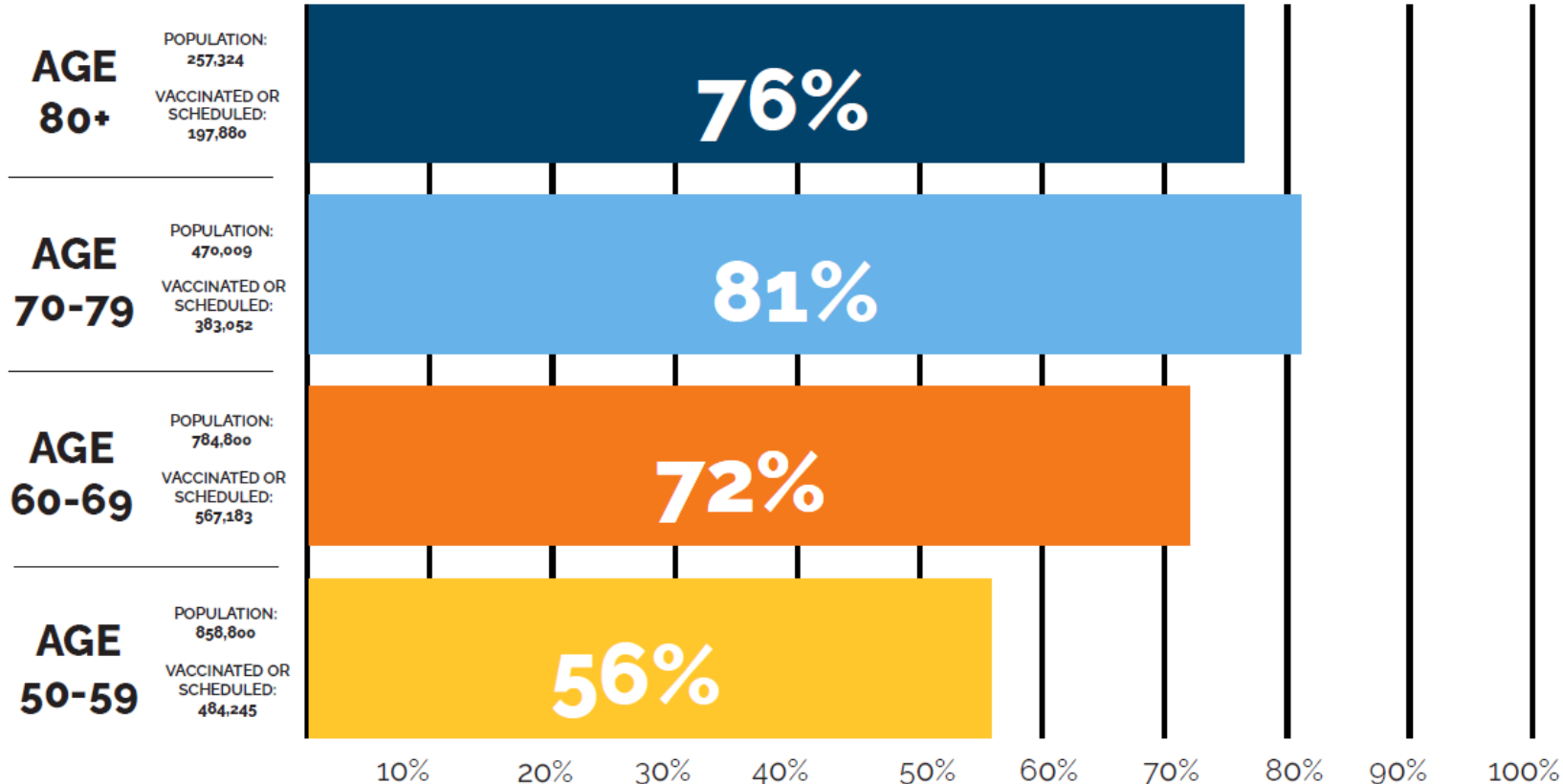
Race	% of Cases
White	49.0 %
Black or African American	22.0 %
Other Race <a href="#">i</a>	21.0 %
Asian	1.0 %



# Vaccinations by age group

## VACCINATIONS IN INDIANA

*This includes residents and workers at Indiana's long-term care facilities who were vaccinated through a federal program.*



# Vaccinations by age group

## VACCINATIONS IN INDIANA

*This includes residents and workers at Indiana's long-term care facilities who were vaccinated through a federal program.*

