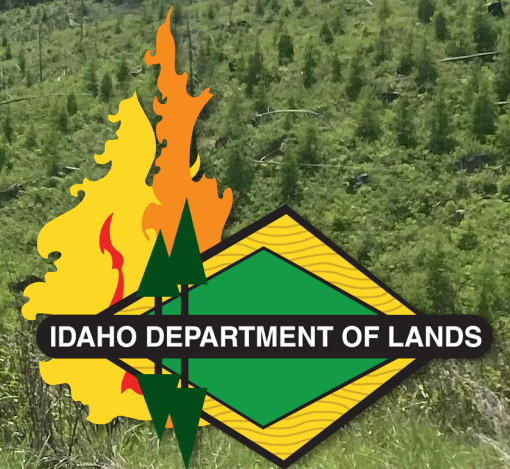


# Federalism Committee

## Fall 2025





# What Guides IDL

***Mission:*** *To professionally and prudently manage Idaho's endowment assets to maximize long-term financial returns to public schools and other trust beneficiaries and to provide professional assistance to the citizens of Idaho to use, protect and sustain their natural resources.*

---

Established under Idaho Code Title 58

---

Manage and generate revenue on 2.5 million acres for endowment beneficiaries

---

K-12 public schools is the largest endowment beneficiary

---

Revenue through timber sales and land leasing (grazing, minerals, comm sites, recreation, etc.)

---

Provide assistance to private landowners and partner with Fed agencies to address forest health

---

Regulate mining activities and enforce the Lake Protection Act and Forest Practices Act

---

Wildfire suppression responsibility on 9 million acres of state, federal and private timberlands

---





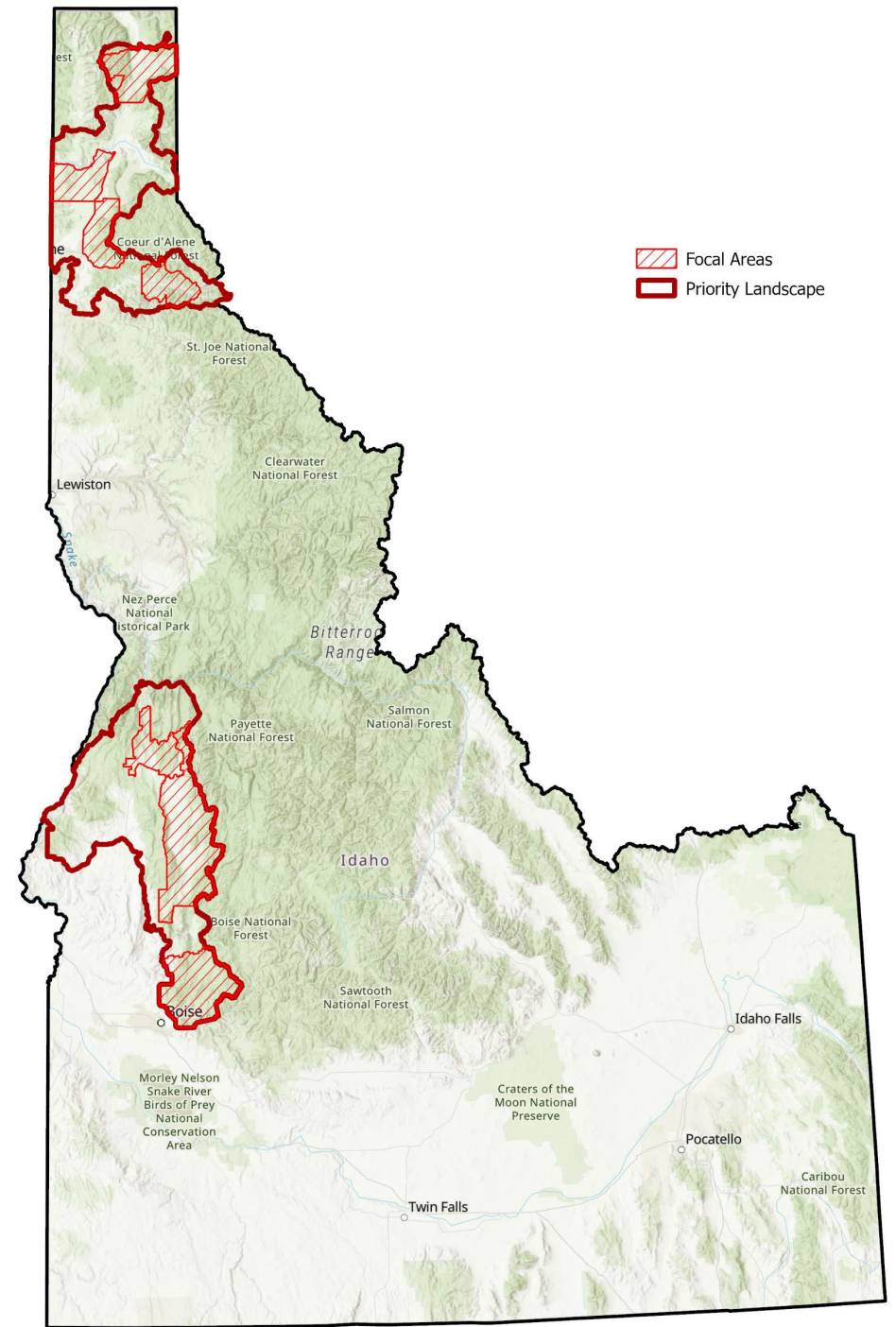
# IDAHO SHARED STEWARDSHIP

## ► Shared Stewardship

- *First Shared Stewardship Master Agreement signed in 2018*
- *Enhanced Shared Stewardship Agreement signed in 2025*

## ► Priority Landscapes

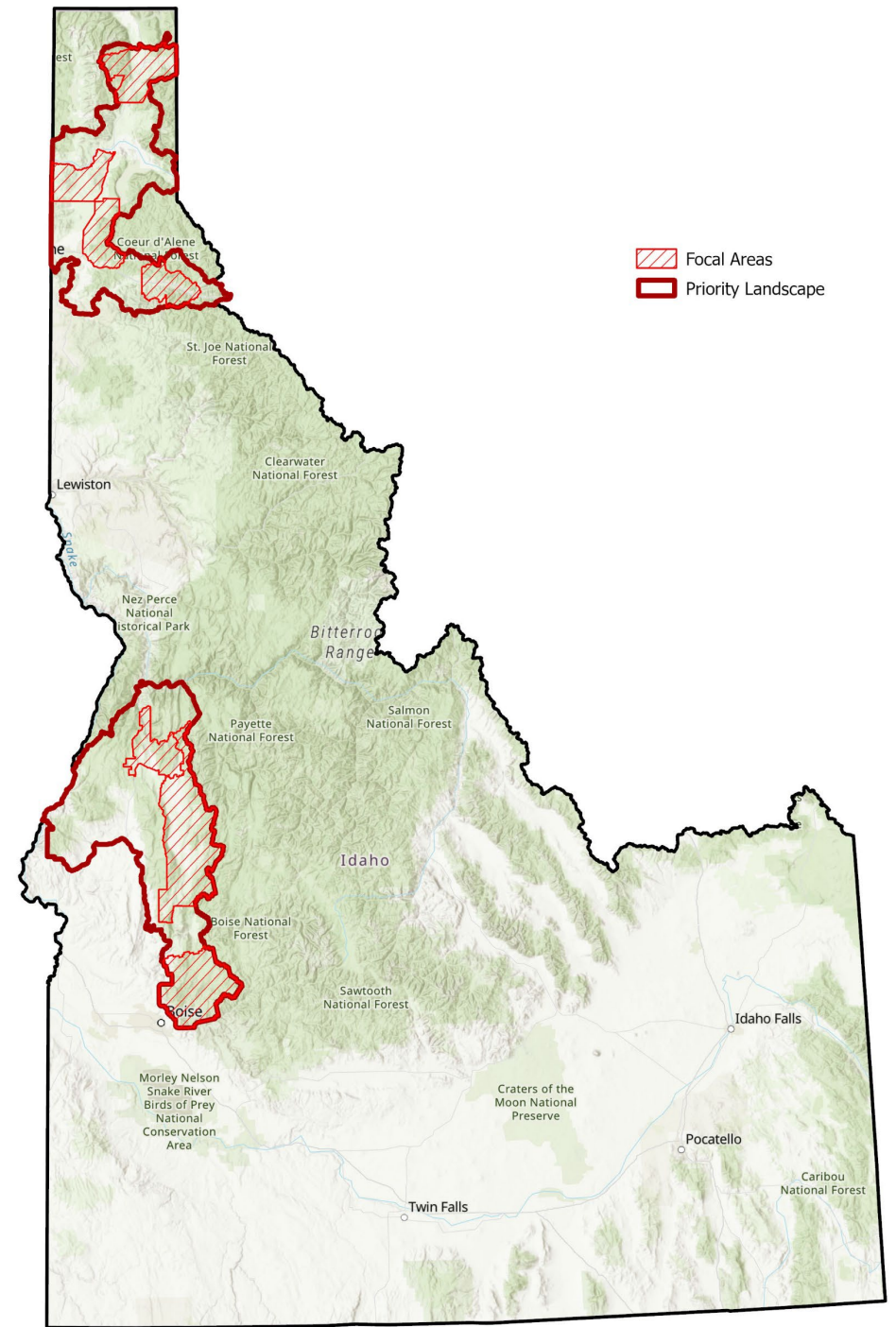
- *Designated by the IDL State Forester and USDA Forest Service Region 1 and Region 4 Foresters in 2019*
- *Modifications to southern PL boundary in 2022*



# IDAHO SHARED STEWARDSHIP

## ► Shared Stewardship Highlights—2025

- *New 2025 Idaho Shared Stewardship Agreement*
- *Enhanced GNA targets*
- *Infrastructure funding, federal funding pauses, and new funding opportunities have resulted in a roller-coaster effect of treatments implemented on private lands*
- *FFY25 resulted in over \$12.9 million awarded to the participating seven counties in our North and South Priority Landscapes*
- *Cross-Boundary Teams in Valley and Shoshone Counties*
- *New County-IDL GNA Agreements with Boundary, Latah and Idaho counties*





# IDAHO SHARED STEWARDSHIP

## STATEWIDE PROGRESS

WITHIN S<sup>2</sup> PRIORITY LANDSCAPES

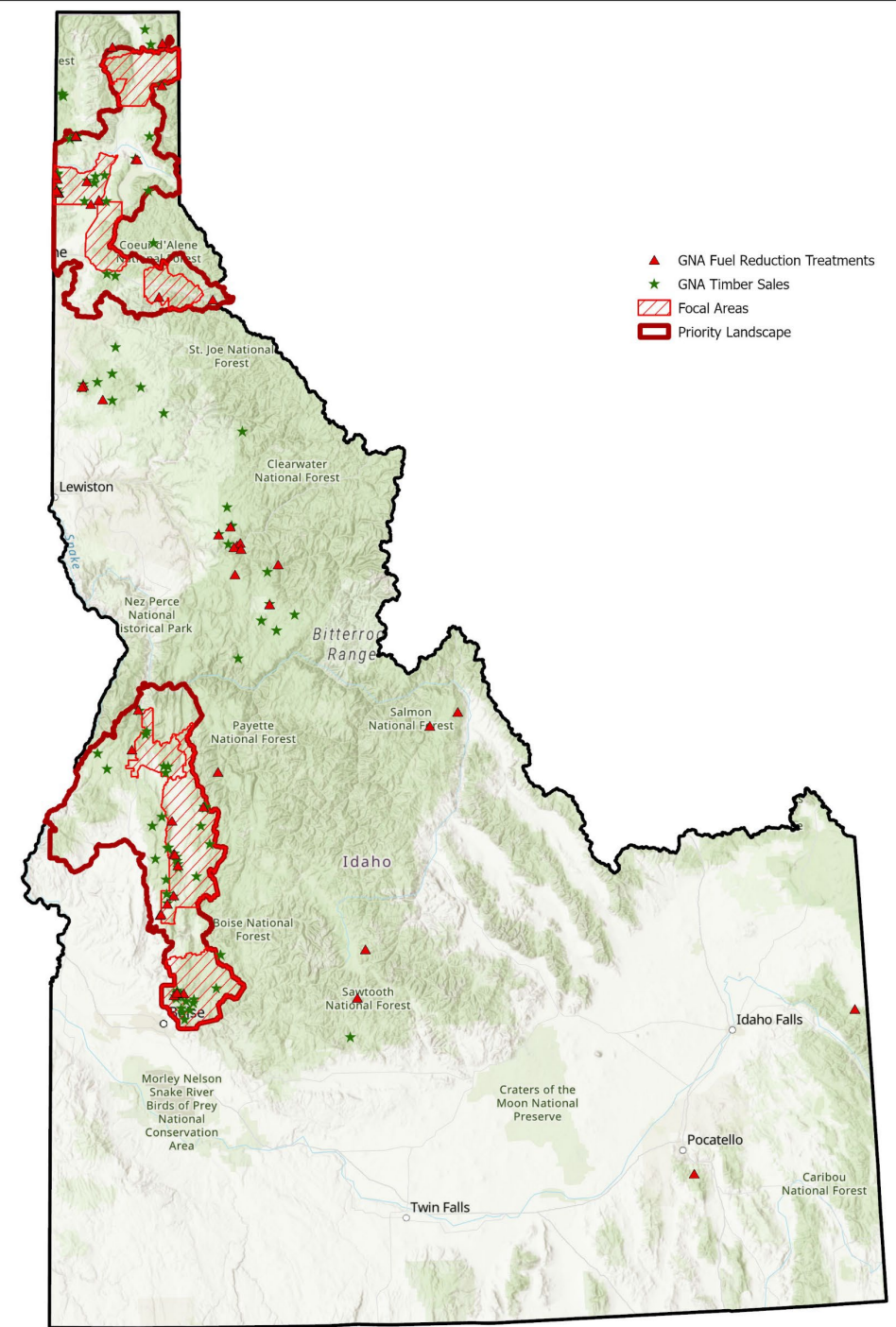
### Cross-Boundary Projects next to 3 National Forests:

- Idaho Panhandle National Forests
- Payette National Forest
- Boise National Forest

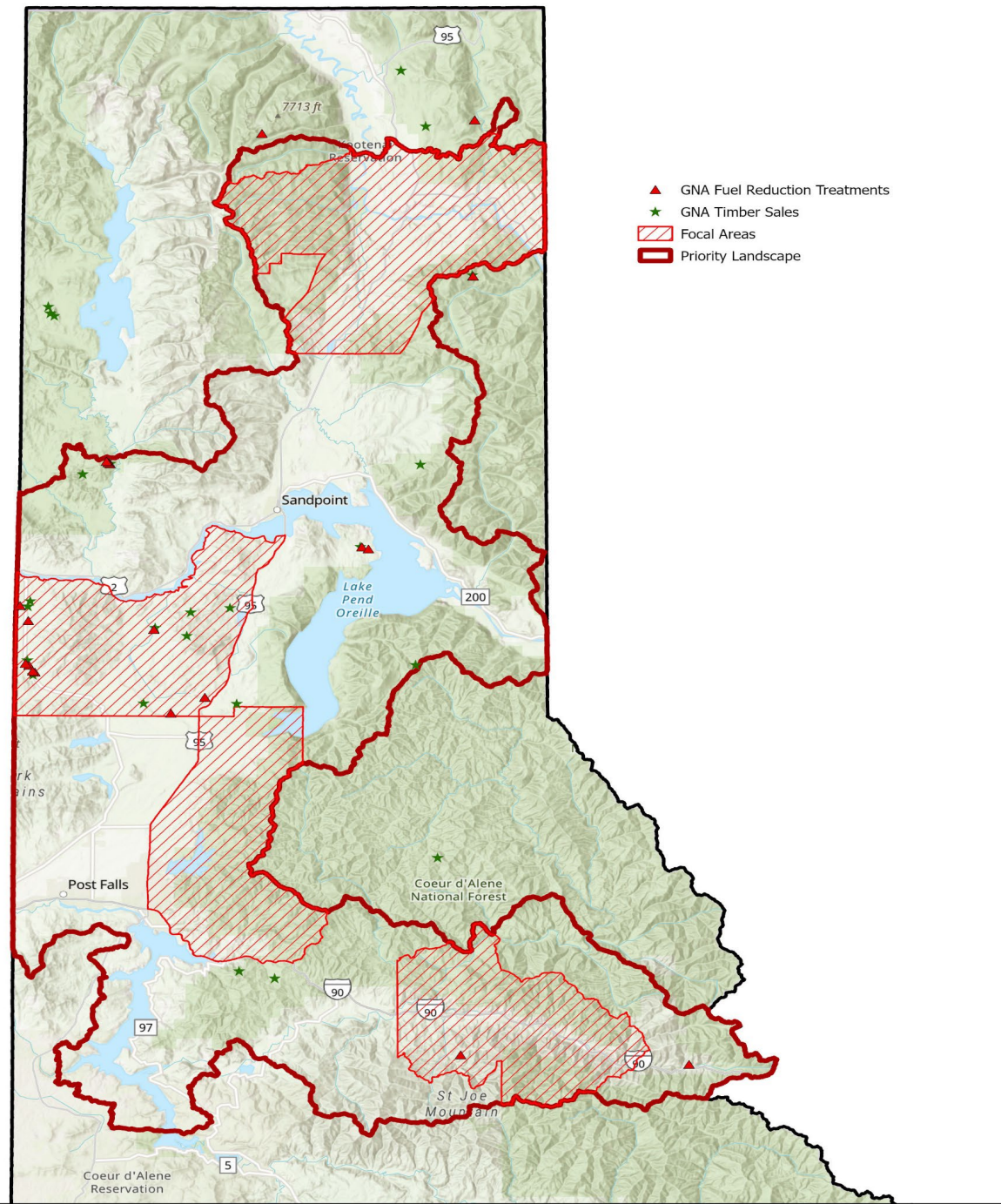
★ = Timber sales

▲ = Non-commercial treatments

on National Forests and BLM  
Lands Administered by **IDL GNA** Foresters









# North-Idaho Shared Stewardship Priority Landscape

## 2024 Accomplishments

USFS

13,700  
acres

GNA

1,079  
acres

IDL

4,515  
acres

Boundary,  
Bonner,  
Kootenai  
Counties  
*(fuels reduction)*

1,083  
acres

NRCS  
EQIP

1,775  
acres

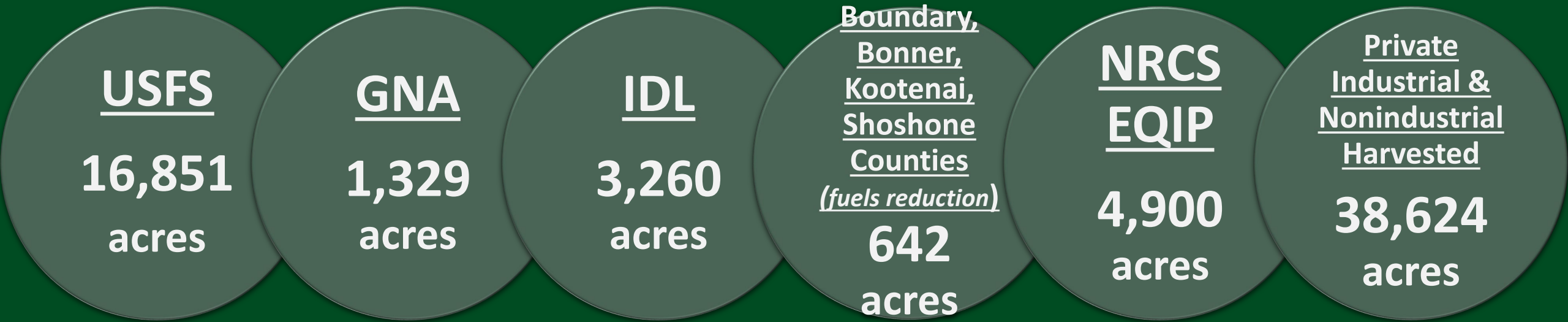
Private  
Industrial &  
Nonindustrial  
Harvested

39,330  
acres

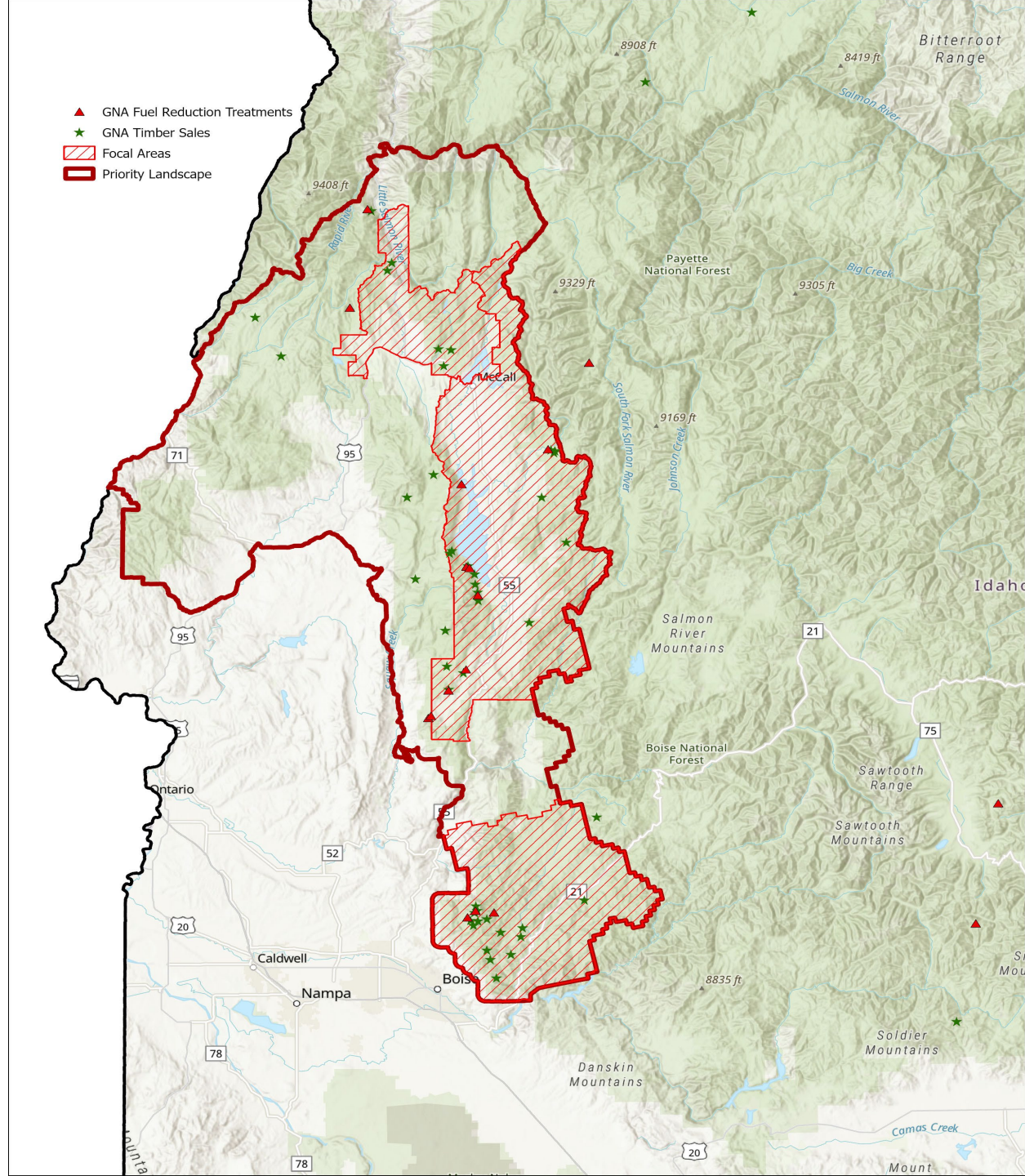


# North-Idaho Shared Stewardship Priority Landscape

## 2025 Accomplishments









# South-Idaho Shared Stewardship Priority Landscape

## 2024 Accomplishments

USFS

46,100  
acres

GNA

3,010  
acres

IDL

4,046  
acres

Adams,  
Valley, Boise  
Counties  
*(fuels reduction)*

1,374  
acres

NRCS  
EQIP

850  
acres

Private  
Industrial &  
Nonindustrial  
Harvested

6,043  
acres

# South-Idaho Shared Stewardship Priority Landscape

## 2025 Accomplishments

USFS

22,713  
acres

GNA

3,750  
acres

IDL

3,914  
acres

Adams,  
Valley, Boise  
Counties  
*(fuels reduction)*

493  
acres

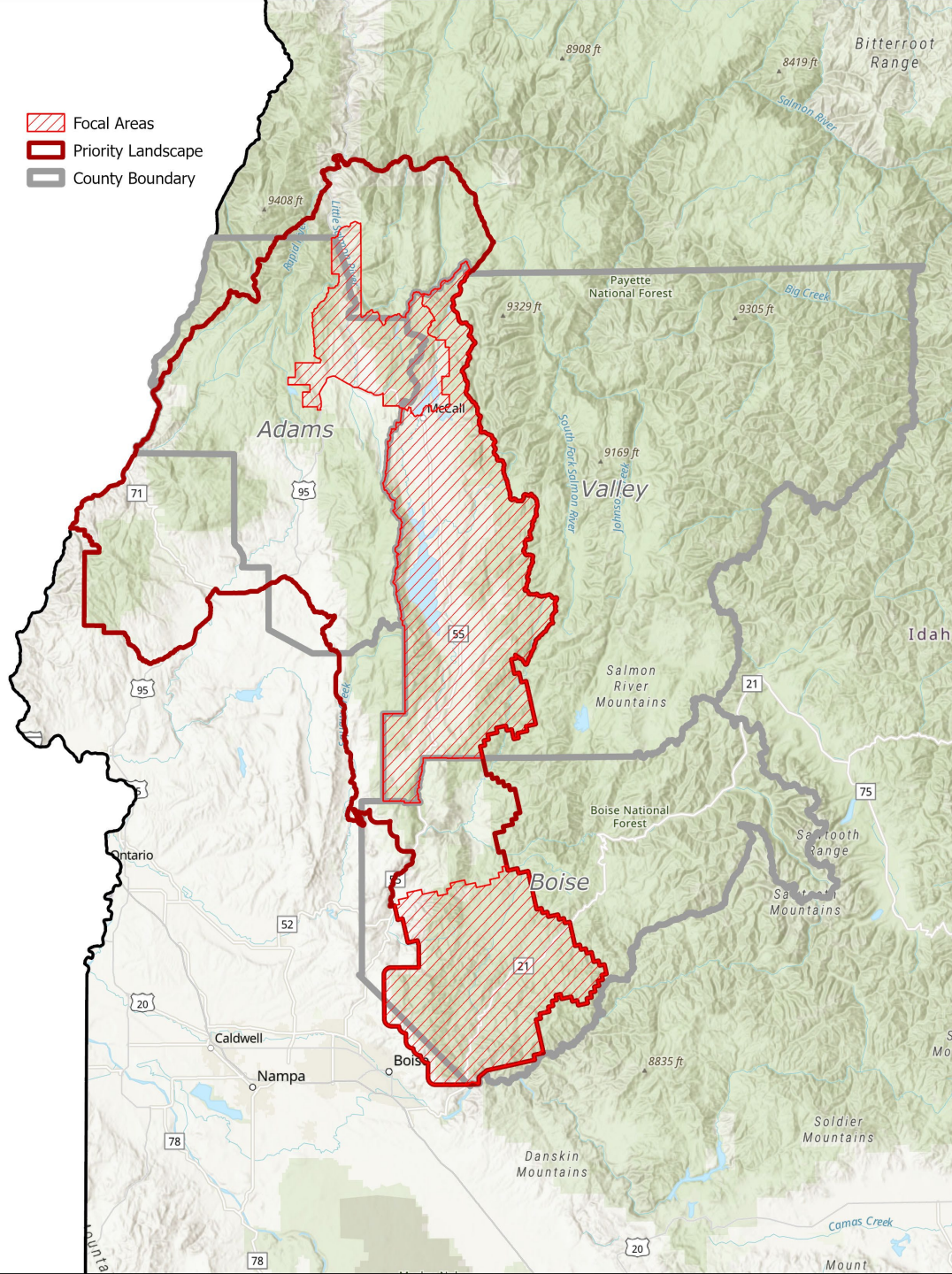
NRCS  
EQIP

134  
acres

Private  
Industrial &  
Nonindustrial  
Harvested

3,364  
acres





# County GNA Funding

**Adams County**  
**\$995,000**

**Valley County**  
**\$675,850**

**Boise County**  
**\$675,000**





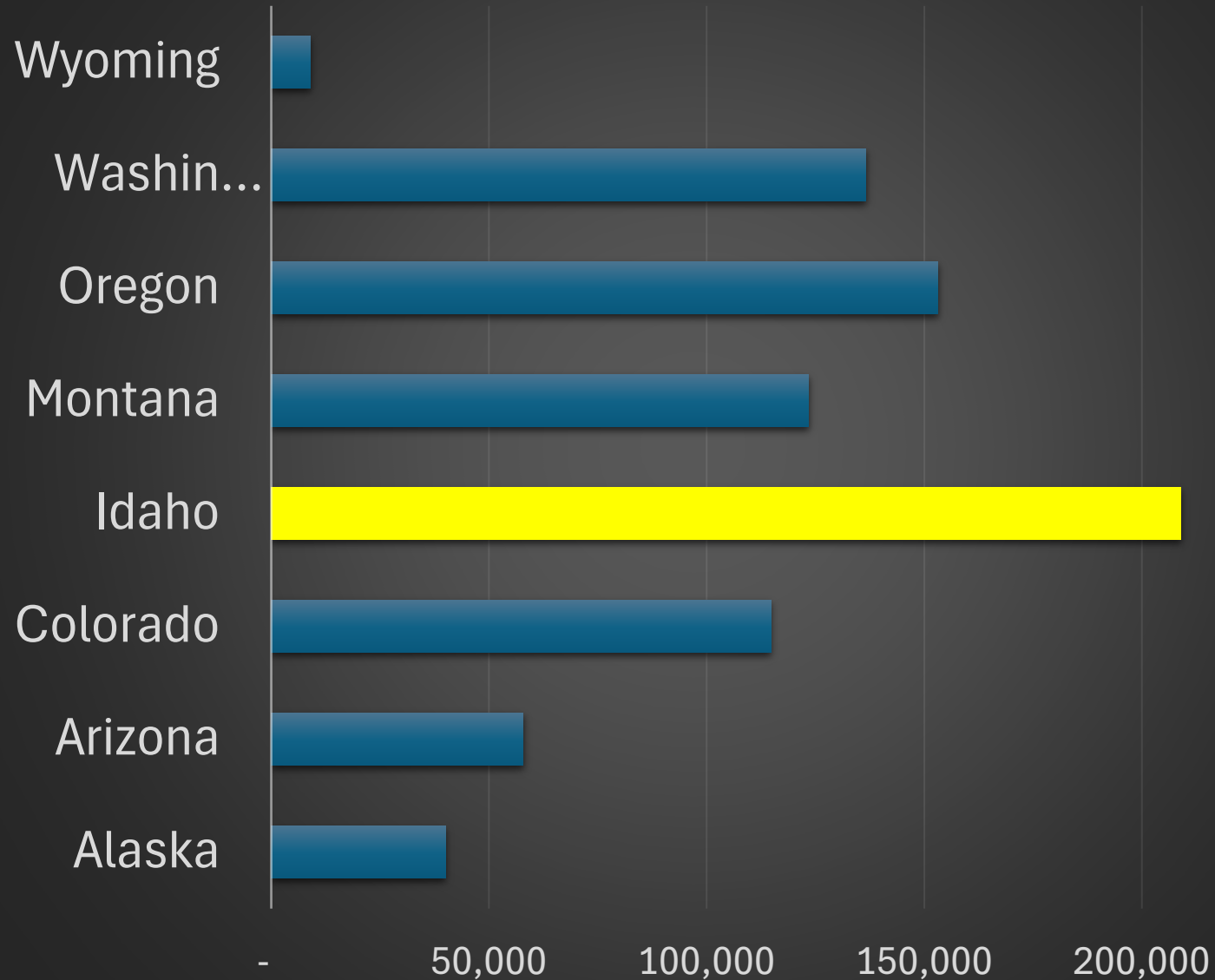




# IDL GOOD NEIGHBOR AUTHORITY

# GNA

**GNA Timber Vol Sold (MBF) to Date**



**64 Timber sales**

**16,570 Acres**

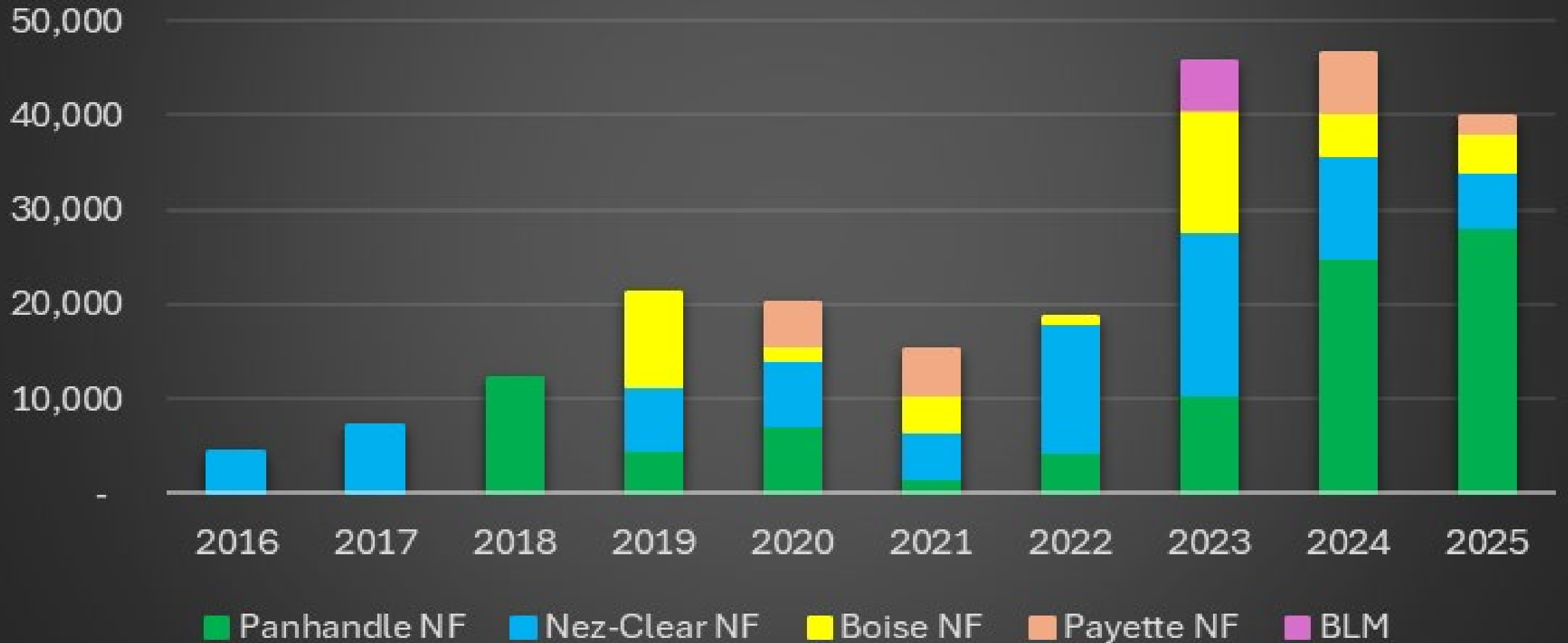
**209 M BF sold**

**\$21 M in receipts**

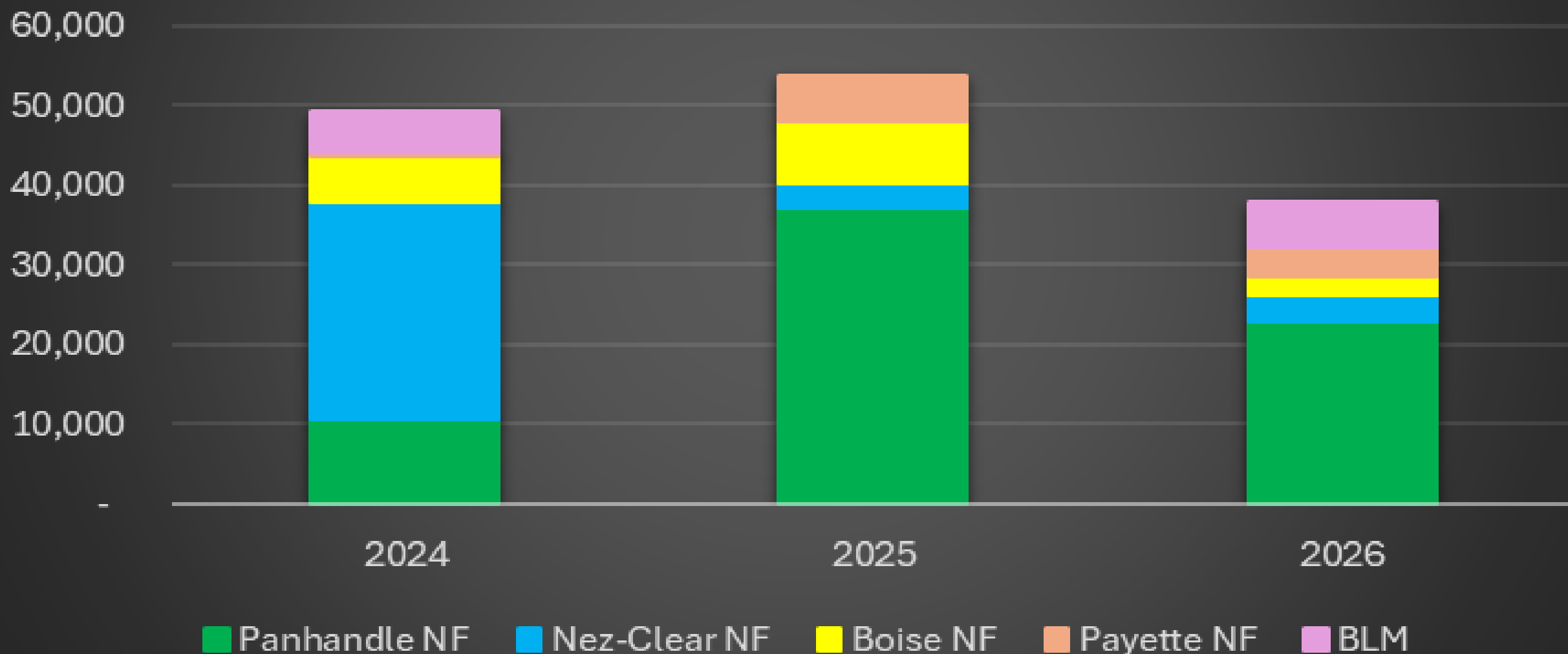
**20%+ Annual USFS  
vol in sold in ID**



# Annual GNA Timber Vol Sold (MBF/CY)



# Annual GNA Timber Vol Sold (MBF/SFY)





An aerial photograph of a forest landscape. The foreground and middle ground are filled with a dense stand of tall, thin evergreen trees. The ground is covered in a layer of brown, dry-looking vegetation or fallen needles. In the background, a range of blue mountains stretches across the horizon under a sky with scattered white clouds.

16 active timber sale operations

- 3,020 truckloads of logs delivered

11 GNA timber sales awarded (CY2024)

- 47 total MMBF over 3,488 total harvest acres
- \$5.6 million total net sale value

**IDL GNA 2024 Highlights—*Timber Sales***



# IDL GNA FY2025 Highlights

## 14 GNA Timber Sales Awarded

- 53.7 total MMBF, 4,510 total harvest acres
- \$9.4 million total net sale value

## 40 GNA Restoration Contracts Awarded(\$2.4M value)

- 13 road improvement projects
- 2,500 ac hazardous fuels treatments
- 750 ac reforestation
- 4 Project Planning/NEPA contracts

IDL-Sawtooth NF GNA Agreement Executed Sep 2025





⏪ **PRESIDENTIAL ACTIONS**

# Immediate Expansion of American Timber Production

The White House

March 1, 2025



## OFFICE OF THE GOVERNOR

[Our Governor](#) ▾ [Initiatives](#) ▾ [Administration](#) ▾ [News & Information](#) ▾ [About Idaho](#) ▾ [Legislative Sessions](#) ▾ [Contact](#) ▾

[Home](#) / [Press Releases](#) / Gov. Little ramps up federal forest management with new executive order

# Gov. Little ramps up federal forest management with new executive order

Tuesday April 22, 2025

Coeur d'Alene, Idaho – Governor Brad Little issued a new executive order today, the “Make Forests Healthy Again Act,” directing the Idaho Department of Lands (IDL) to expand its partnership with the U.S. Forest Service to increase management activities and reduce fire risk in federally managed national forests in Idaho.

*“For too long, millions of acres of national forests in Idaho have remained totally untouched, creating a tinderbox of fuel that threatens communities, air quality, and the environment. The State of Idaho has led the country in standing up programs to help our federal partners increase the pace and scale of active management on federal ground. The work we’ve done is making a difference. However, under the previous administration, we were limited in the extent we could help. That has changed under the Trump administration,” **Governor Little** said.*

The Governor’s action complements a [March 1 executive order](#) from President Donald Trump called the “Freeing our Forests Act” and [an order by USDA Secretary Brooke Rollins](#) this month, both aimed at revitalizing rural communities, improving forest health, and minimizing wildfire risk through increased management of federal forests.

Trump administration officials and Idaho’s agriculture community expressed support for Governor Little’s executive order.

*“I commend Governor Little for acting quickly to fix our national forest emergency. Americans rely on Idaho’s productive and abundant forests, and this executive order will go a long way towards strengthening the timber industry in the state and minimizing harmful pests, disease, and risk of fire,” **U.S. Secretary of Agriculture Brooke L. Rollins** said.*

*“The Forest Service and Idaho share a proud history of collaboration to address critical challenges in maintaining healthy national forests. Idaho leads the way in leveraging the Good Neighbor Authority and advancing our Shared Stewardship efforts to reduce wildfire risk, create healthy and resilient forests, and generate jobs in rural communities,” **Deputy Under Secretary of Natural Resources and Environment Kristin Sleener** said*















# ***Mercy Fire***

## ***August 2023—Bonner County***





# Fire Season Update

IDL Protection Area, 2025	Stats
Total acres burned	4,898
Number of fires	390
Human-caused fires	115
Undetermined	135
Natural	140

**IDL has spent approximately \$52.5 million on fire suppression activities.** \$12.1 million of that is reimbursable to IDL for assisting other agencies on their fires, leaving a total estimated net obligation to the General Fund of \$40.4 million so far this year.

## Incident Management Team Fires

### Nettleton Gulch Fire

June 29-July 4  
23 acres

### Cherry Fire

July 14-July 22  
113 acres

### Sunset Fire

Aug. 13-Sept. 5  
3,283 acres





# Strategic Plan for Managing Wildland Fire

A comprehensive approach to strengthening IDL's fire program to meet current and future challenges. This evolving plan tackles how to:

1. Strengthen organizational capacity for evolving wildland fire challenges.
2. Enhance fire prevention and mitigation efforts.
3. Build adaptive infrastructure to address increasing fire occurrence and severity.
4. Foster interagency collaboration and resilience.
5. Expand existing funding streams.

## Completed

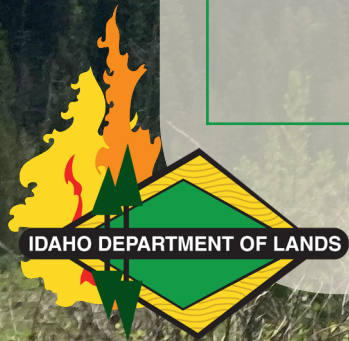
Land Board review and approval in August.

## Right now

External stakeholder review and comment period, additional internal stakeholder review.

## Next steps

Incorporating stakeholder comments, then working on Implementation Plan, putting numbers to needs.





# Proposed Legislation

Idaho Code § 38-111 states: *“For private owners of forest lands whose total acres of forest lands are twenty-six (26) acres or more, the state board of land commissioners shall establish this cost not to exceed sixty-five cents (\$0.65) an acre per year. For private owners of forest lands whose total acres of forest lands are twenty-five (25) acres or fewer, the minimum assessment per year shall be equal to the per acre cost multiplied by twenty-five (25).*

*In addition to any other assessment prescribed in this chapter, the state board of land commissioners shall establish a surcharge to be levied and assessed in an amount not to exceed forty dollars (\$40.00) for each improved lot or parcel to offset costs associated with wildfire preparedness.”*

The intent of the structure surcharge is to defray the cost of fire suppression on forest land caused by the existence of the improvements.

This legislation revises Section 38-111, Idaho Code to increase the structure surcharge levied on improved private forest land parcels from a maximum of \$40 to a maximum of \$100. This is a dedicated fund to support wildland fire preparedness.



# Questions?

