

STATE BOARD OF LAND COMMISSIONERS

September 16, 2025

Department Report

Subject

Fire Season Update

Background

As of September 10, Emergency Fire Suppression expenditures are estimated to be \$45,205,500. The suppression account will recover an estimated \$7,967,000 of reimbursable costs, for a net obligation of \$37,238,500. The total obligation includes the 2025 contracted aircraft costs and prepositioned contract engines to assist with a lack of qualified engine bosses. These engines are assigned across the state to boost initial attack resources.

Discussion

On August 13, the Sunset Fire was reported 30 miles northeast of Coeur d'Alene. The fire burned 3,183 acres and is 100 percent contained. The fire burned a mixed ownership of private and US Forest Service land. The fire was suppressed by the North Idaho Type 3 Team and Northern Rockies Team 5 Complex Incident Management Team. It went back to the district on Friday, September 5.

Fire Season Comparison to Date

Number and Size of Fires (Year to Date)

Year	Human	Lightning	Total	Acres
2020	173	49	222	4,853
2021	227	154	381	141,883
2022	111	133	244	3,887
2023*	195	76	271	2,577
2024*	180	112	292	48,336
2025*	229	114	343	4,699
20-Yr. Average (2002-2022)			271	24,567

*2024 and 2025 fires are calculated using the protection boundaries of the new Idaho Master Agreement which has increased the area in which IDL is the protecting agency. Therefore, there is an inconsistency between earlier numbers and 20-year averages.

September is predicted to have average fire potential for nearly the entire state. There is a small area in the southwest part of the state with above average wildland fire potential for September. The extended forecasts indicate slightly elevated temperatures with near normal precipitation. Drought remains present

throughout much of the state with north central Idaho being the most impacted. Fire season duration and severity will be dictated by a combination of weather and ignitions.

Stage 1 restrictions are in place for portions of south-central Idaho.

Significant Idaho Fires Outside of IDL Protection

Island Creek Fire

Agency/Management: Nez-Clearwater National Forest (USFS)

General Location: 14 miles east of Elk City, ID

Acres Burned: 14,802 acres, 5 percent contained

White Pine Fire

Agency/Management: Nez-Clearwater National Forest (USFS)

General Location: 44 miles north of Lewiston, ID

Acres Burned: 797 acres, 10 percent contained

Rock Fire

Agency/Management: Boise National Forest (USFS)

General Location: 5 miles southwest of Donnelly, ID

Acres Burned: 2,794 acres, 92 percent contained

Total Acres Burned by Ownership as of 9/10/2025

Surface Owner	Acres
Bureau of Land Management	79,492
U.S. Forest Service	62,069
Other Federal	8,159
Tribal	1,257
Private	12,991
State Endowment	6,776
Other State	303
Other	184
Total Acres	171,231

Only fires with perimeters in the Fire Enterprise Geospatial Portal have been included in the analysis.

Fire Deficiency Warrant Spending—2025 Fire Season YTD

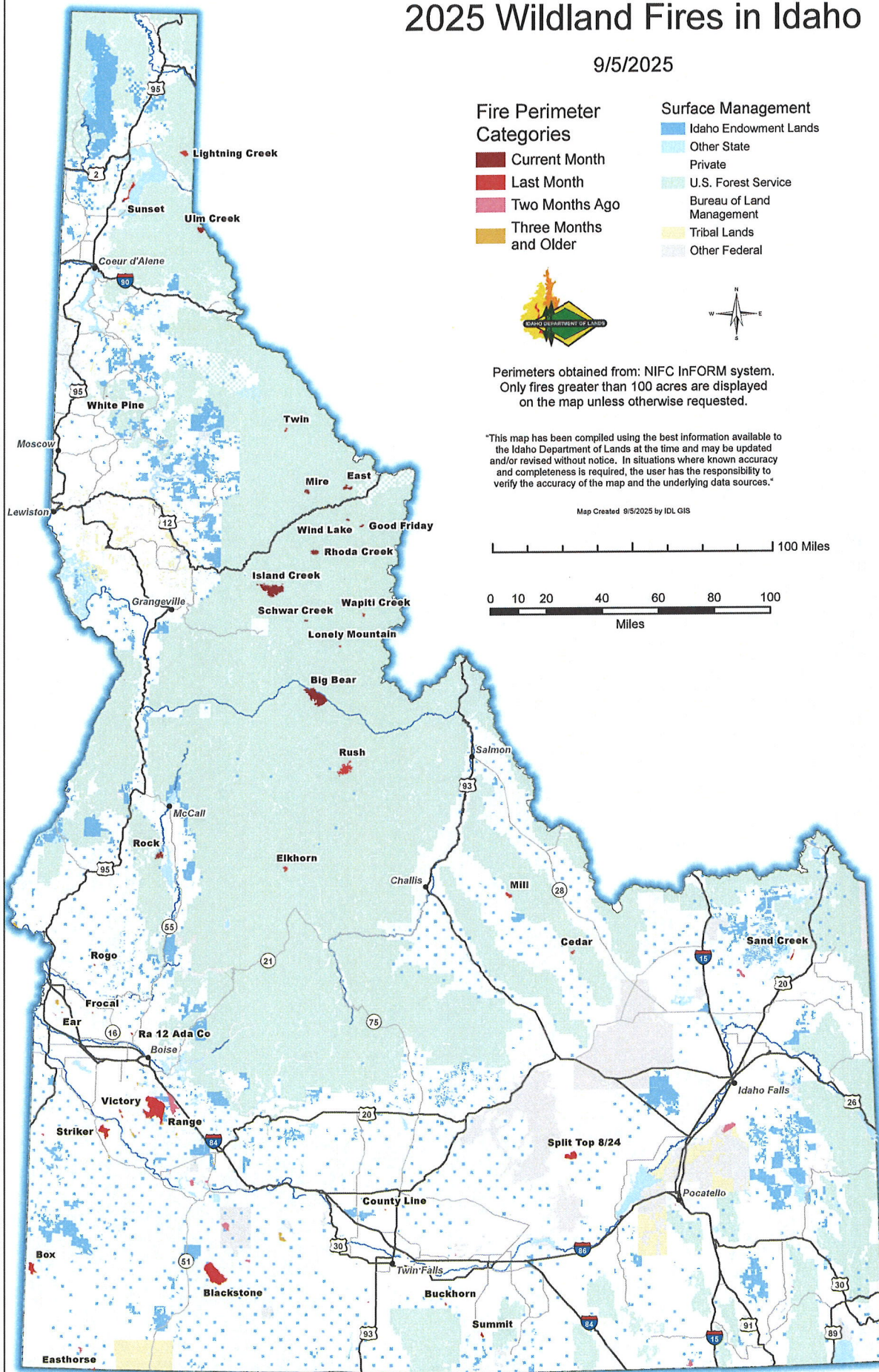
Category	Estimated Costs	Notes
Aviation Resources	\$3,500,000	4 SEATS, 4 Single Engine Water Scooper (Fire Boss), 1 Type 1 UH-60 Blackhawk
Prepositioned Engines	\$1,012,500	5 Type 6 Exclusive Use Contract Engines July 14-Sept. 15 (45 days guaranteed)
IDL Non-Team Fires	\$8,814,000	IDL/Assn fires including pre-positioning. Based on estimates and actuals.
IDL Team Fires	\$22,750,000	Nettleton Gulch (T3@MIS); Cherry (T3@PDS); Sunset (CIMT@POS)
Other Suppression/Non-reimbursable	\$1,162,000	Coeur d'Alene Cache: incoming and outgoing supplies not yet billed; Dispatch/Bureau cost when supporting multiple incidents.
Other Suppression/Reimbursable	\$7,967,000	Reimbursable—IDL and Fire Department resources supporting non-IDL fires.
Total Estimate YTD	\$45,205,500	Does not include Cost Share Fires which will be reported in October.

Attachments

1. Map—Wildland Fires
2. Map—Fire Restrictions

2025 Wildland Fires in Idaho

9/5/2025



Idaho Fire Restrictions

9/5/2025

Restriction Stage

- Stage II
- Stage I
- No Restriction

Restriction Area	Restriction Zone	Restriction	Date Enacted
Boise	Owyhee, West Central, Treasure Valley	None	
Central Idaho	Central Idaho	None	
Coeur d'Alene	South Zone, North Zone, Kaniksu	None	
East Idaho	Centennial, Big Desert, Caribou Highlands	None	
Grangeville	East Zone GVC, West Zone GVC	None	
Payette	Little Salmon Zone, Weiser River Zone, Payette NF West Zone, Payette NF East Zone, Long Valley/Meadows Valley Zone	None	
South Idaho	Sawtooth North (National Forest), Sawtooth North, Cassia Zone (National Forest)	Stage I	08/01/2025
South Idaho	Three Creek Zone, Cassia Zone, Shoshone Zone	None	



"This map has been compiled using the best information available to the Idaho Department of Lands at the time and may be updated and/or revised without notice. In situations where known accuracy and completeness is required, the user has the responsibility to verify the accuracy of the map and the underlying data sources."

Map Created 9/5/2025 by IDL GIS

