

STATE BOARD OF LAND COMMISSIONERS

August 19, 2025
Department Report

Subject

Fire Season Update

Background

As of August 12, Emergency Fire Suppression expenditures are estimated to be \$18,604,500. The suppression account will recover an estimated \$4,714,000 of reimbursable costs, for a net obligation of \$13,890,500. The total obligation includes the 2025 contracted aircraft costs and prepositioned contract engines to assist with a lack of qualified engine bosses. These engines will be assigned across the state to boost initial attack resources.

Fire Season Comparison to Date

Number and Size of Fires (Year to Date)

Year	Human	Lightning	Total	Acres
2021	173	109	282	115,970
2022	75	27	102	421
2023*	152	46	198	1,969
2024*	149	94	243	23,572
2025*	196	82	278	1,382
20-Yr. Average (2002-2022)			166	18,434

*2024 and 2025 fires are calculated using the protection boundaries of the new Idaho Master Agreement which has increased the area in which IDL is the protecting agency. Therefore, there is an inconsistency between earlier numbers and 20-year averages.

During July, there was below normal precipitation for the northern half of Idaho with Southern Idaho receiving above average precipitation. Precipitation was spotty as different bands of storms moved across the state. July saw a significant increase in fire quantity, however, due to periodic rainfall, fire sizes were kept in check. As August progresses, short duration benefits from rainfall will be lost and more seasonal fire behavior is expected.

Stage 1 restrictions are in place for portions of south-central and east Idaho.

Significant Idaho Fires Outside of IDL Protection

Lightning Creek Fire

Agency/Management: Idaho Panhandle (USFS)

General Location: 20 miles east of Sandpoint, ID

Acres Burned: 2,461 acres, 0 percent containment

Big Bear Fire

Agency/Management: Payette National Forest (USFS)

General Location: 60 miles northeast of McCall, ID

Acres Burned: 14,935 acres, 70 percent complete

Rush Fire

Agency/Management: Payette National Forest (USFS)

General Location: 45 miles east of Salmon, ID

Acres Burned: 7,392 acres, 90 percent containment

Total Acres Burned by Ownership as of 8/12/2025

Surface Owner	Acres
Bureau of Land Management	68,143
U.S. Forest Service	26,805
Other Federal	8,023
Tribal	1,236
Private	10,621
State Endowment	6,268
Other State	208
Total Acres	121,304

Only fires with perimeters in the Fire Enterprise Geospatial Portal have been included in the analysis.

Fire Deficiency Warrant Spending—2025 Fire Season YTD

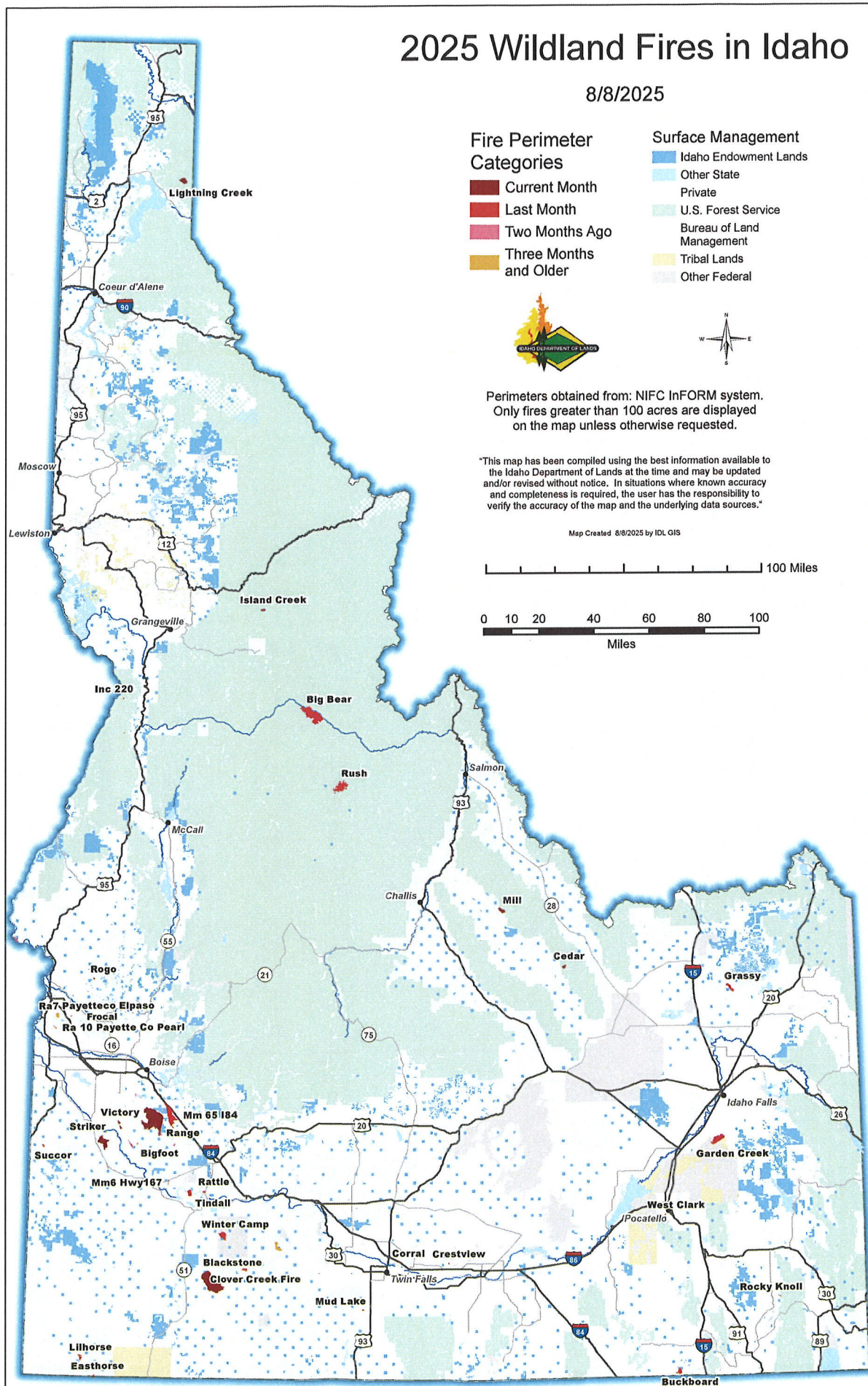
Category	Estimated Costs	Notes
Aviation Resources	\$3,500,000	4 SEATS, 4 Single Engine Water Scooper (Fire Boss), 1 Type 1 UH-60 Blackhawk
Prepositioned Engines	\$1,012,500	5 Type 6 Exclusive Use Contract Engines July 14-Sept. 15 (45 days guaranteed)
IDL Non-Team Fires	\$4,316,000	IDL/Assn fires including pre-positioning. Based on estimates and actuals.
IDL Team Fires	\$4,350,000	Nettleton Gulch (T3@MIS); Cherry (T3@PDS)
Other Suppression/Non-reimbursable	\$712,000	Coeur d'Alene Cache: incoming and outgoing supplies not yet billed; Dispatch/Bureau cost when supporting multiple incidents.
Other Suppression/Reimbursable	\$4,714,000	Reimbursable—IDL and Fire Department resources supporting non-IDL fires.
Total Estimate YTD	\$18,604,500	Does not include Cost Share Fires which will be reported in October.

Attachments

1. Map—Wildland Fires
2. Map—Fire Restrictions

2025 Wildland Fires in Idaho

8/8/2025



Idaho Fire Restrictions

8/8/2025

Restriction Stage

- Stage II
- Stage I
- No Restriction

Restriction Area	Restriction Zone	Restriction	Date Enacted
Boise	Owyhee, West Central, Treasure Valley	None	
Central Idaho	Central Idaho	None	
Coeur d'Alene	South Zone, North Zone, Kaniksu	None	
East Idaho	Centennial, Big Desert, Caribou Highlands	Stage I	08/07/2025
Grangeville	East Zone GVC, West Zone GVC	None	
Payette	Little Salmon Zone, Weiser River Zone, Payette NF West Zone, Payette NF East Zone, Long Valley/Meadows Valley Zone	None	
South Idaho	Sawtooth North (National Forest), Sawtooth North, Cassia Zone (National Forest)	Stage I	08/01/2025
South Idaho	Three Creek Zone, Cassia Zone, Shoshone Zone	None	



"This map has been compiled using the best information available to the Idaho Department of Lands at the time and may be updated and/or revised without notice. In situations where known accuracy and completeness is required, the user has the responsibility to verify the accuracy of the map and the underlying data sources."

Map Created 8/8/2025 by IDL GIS

