

# STATE BOARD OF LAND COMMISSIONERS

February 18, 2025

Trust Land Revenue

## Timber Sales

During January 2025, the Idaho Department of Lands (IDL) sold six endowment timber sales and one Good Neighbor Authority (GNA) timber sale at auction. All sales sold had competitive bidding. The net sale value represents a 36% up bid on endowment timber sales and 84% on GNA timber sales over the appraised value. One endowment timber sale did not sell at auction on its third attempt.

TIMBER SALE AUCTIONS								
Sale Name	Area	Sawlog MBF	Cedar Prod MBF	Pulp MBF	Appraised Net Value	Sale Net Value	Net \$/MBF	Purchaser
Westwood	MICA	4,780	0	0	\$ 639,281.00	\$ 872,205.00	\$ 182.47	IFG Timber
Worn Leather Cedar	POL	2,535	0	0	\$ 905,874.50	\$1,058,847.10	\$ 417.69	IFG Timber
North Loop Cedar	MC	3,135	0	0	\$ 789,904.00	\$1,115,526.00	\$ 355.83	Stella-Jones Corporation
Mashed Potato Cedar	PON	8,350	0	0	\$2,472,789.00	\$3,430,706.00	\$ 410.86	IFG Timber
White Doe Cedar	CLWR	1,050	0	0	\$ 169,204.00	\$ 233,452.00	\$ 222.34	Mike Kesler Enterprises
Anchor Cedar	CLWR	3,630	0	0	\$1,089,397.00	\$1,564,967.40	\$ 431.12	Empire Lumber Co.
<b>Endowment</b>		<b>23,480</b>	<b>0</b>	<b>0</b>	<b>\$6,066,449.50</b>	<b>\$8,275,703.50</b>	<b>\$ 352.46</b>	
Mineral Elk GNA	IPNF	8,140	0	0	\$1,578,778.14	\$2,907,932.64	\$ 357.24	IFG Timber
<b>Non-Endowment</b>		<b>8,140</b>	<b>0</b>	<b>0</b>	<b>\$1,578,778.14</b>	<b>\$2,907,932.64</b>	<b>\$ 357.24</b>	

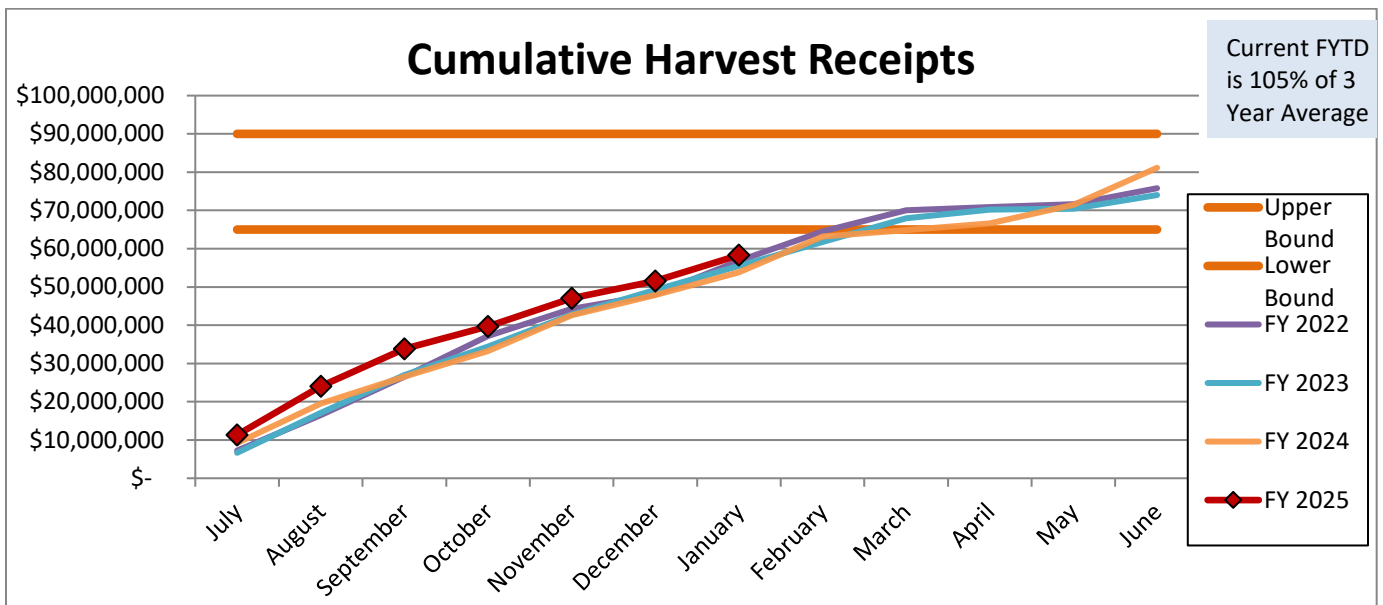
PROPOSED TIMBER SALES FOR AUCTION				
Sale Name	Volume MBF	Advertised Net Value	Area	Scheduled Auction Date
North Operations				
Bear Parts	3,110	\$ 409,534.50	Priest Lake	2/4/2025
Thompson Turkey	2,605	\$ 204,745.50	St. Joe	2/5/2025
Steep and Cheep	2,495	\$ 570,079.00	Pend Oreille	2/25/2025
Red Hot GNA	2,530	\$ 171,267.70	Nez Clear NF	2/27/2025
<b>TOTALS</b>	<b>10,740</b>	<b>\$ 1,355,626.70</b>		
South Operations				
Huck Seed Cedar	3,105	\$ 832,667.50	CLWR	2/19/2025
Rainy Slopes II OSR	1,275	\$ 162,764.50	CLWR	2/19/2025
Dog Shorts Ton	3,200	\$ 271,701.48	PAY	2/26/2025
<b>TOTALS</b>	<b>7,580</b>	<b>\$ 1,267,133.48</b>		

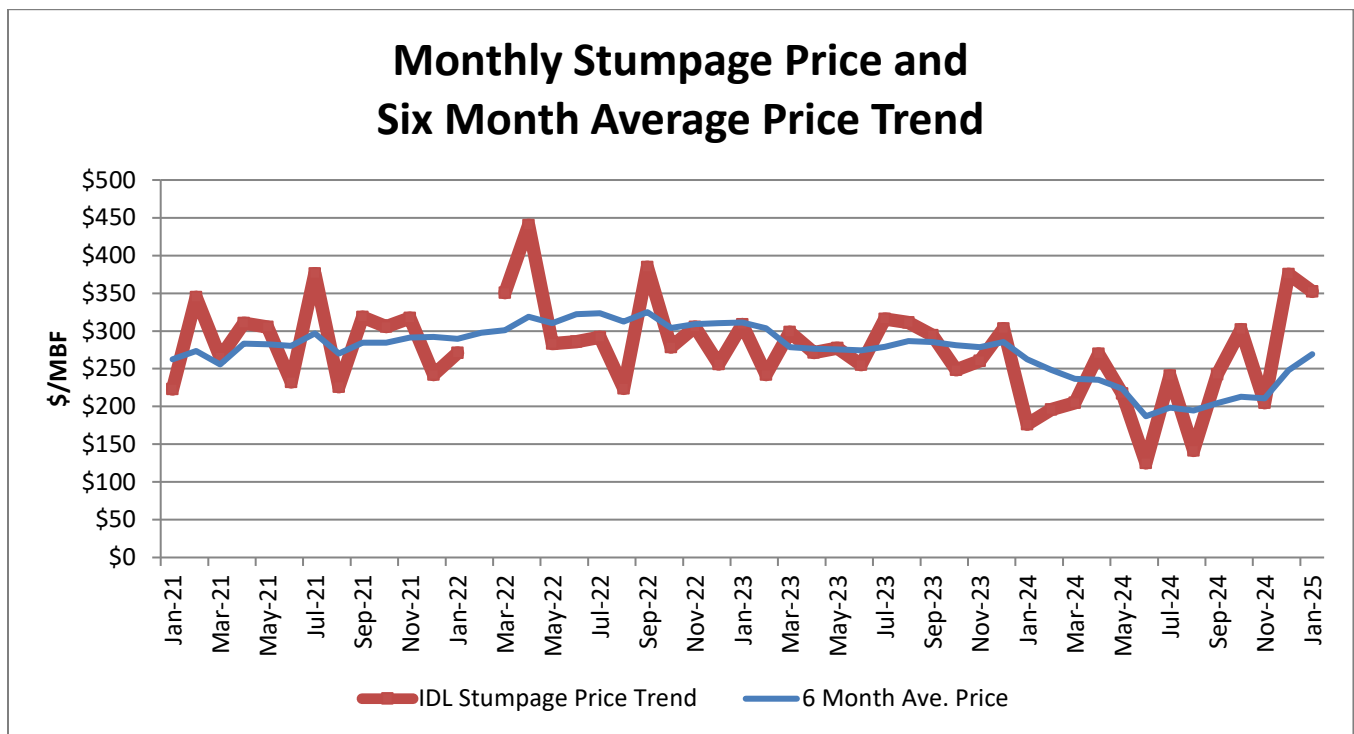
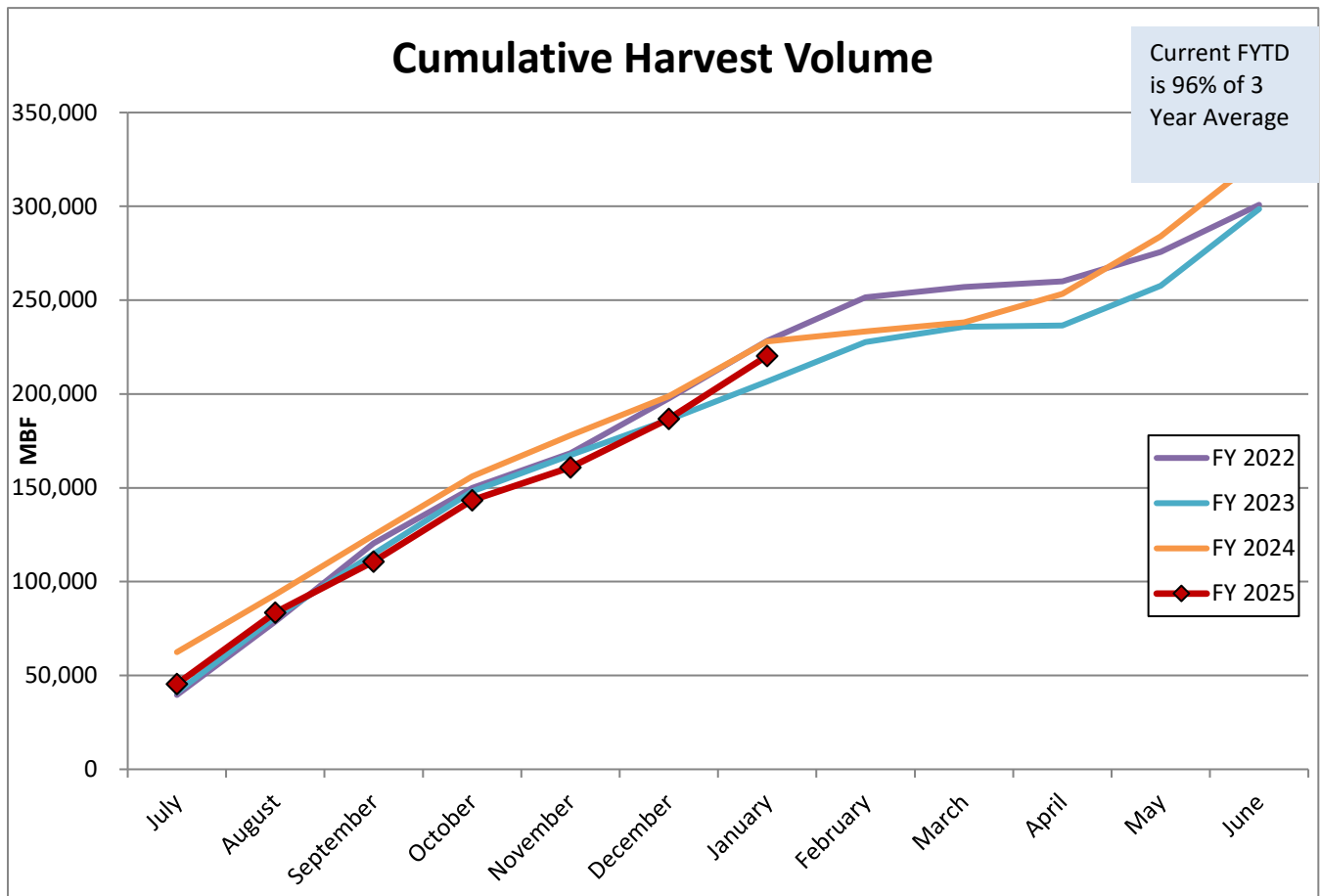
VOLUME UNDER CONTRACT as of January 31, 2025				
	Public School	Pooled	Total	3 Year Avg.
Active Contracts			<b>161</b>	163
Total Residual MBF Equivalent	296,825	168,865	<b>465,690</b>	517,451
Estimated residual value	\$81,836,495	\$50,881,886	<b>\$132,718,381</b>	\$139,019,441
Residual Value (\$/MBF)	\$275.71	\$301.32	<b>\$284.99</b>	\$268.66

	TIMBER HARVEST RECEIPTS				
	January		FY to date	February Projected	
	Stumpage	Interest	Harvest Receipts	Stumpage	Interest
Public School	\$ 3,900,581.53	\$ 334,830.44	\$ 36,276,645.56	\$ 4,904,060.64	\$ 299,664.16
Pooled	\$ 2,280,053.97	\$ 225,609.93	\$ 22,019,436.02	\$ 2,964,568.38	\$ 246,621.81
General Fund	\$ 0.06	\$ -	\$ 4,163.55		\$ -
<b>Totals</b>	<b>\$ 6,180,635.56</b>	<b>\$ 560,440.37</b>	<b>\$ 58,300,245.13</b>	<b>\$ 7,868,629.02</b>	<b>\$ 546,285.97</b>

	Status of FY2025 Timber Sale Program					
	MBF Sawlog			Number Poles		
	Public School	Pooled	All Endowments	Public School	Pooled	All Endowments
Sold as of January 31, 2025	39,658	76,043	115,701	5,024	9,546	14,570
Currently Advertised	19,458	7,347	26,805	0	0	0
In Review	20,814	9,671	30,485	4,000	0	4,000
Did Not Sell*	1,575	0	1,575	0	0	0
<b>TOTALS</b>	<b>81,505</b>	<b>93,061</b>	<b>174,566</b>	<b>9,024</b>	<b>9,546</b>	<b>18,570</b>
FY2025 Sales Plan			328,000			20,000
Percent to Date			53%			93%

\* After three attempts at auction.





January 2025 6-month average price is \$269.39.  
 January 2024 6-month average price was \$262.54.

# TIMBER SALES STATUS

February 18, 2025



- City
- ▲ Supervisory Area Office
- ▭ Supervisory Area Boundary
- US Hwy
- Interstate Hwy
- ★ GNA, Proposed Sale
- ★ GNA, Sold Sale
- ★ State, Not Sold
- ★ State, Proposed Sale
- ★ State, Sold Sale

0 25 50 100 Miles

GIS Program 1/31/2025

