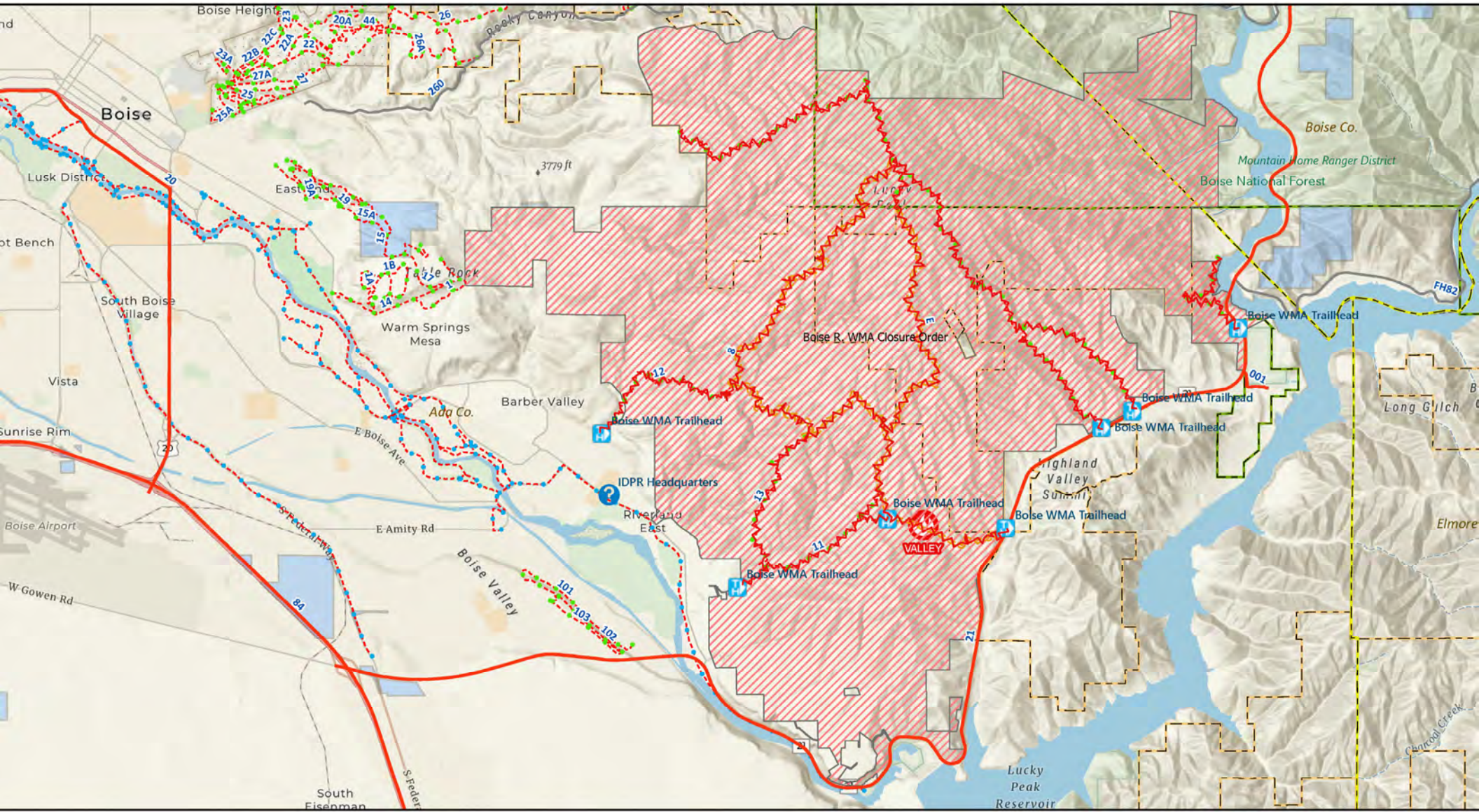


Boise River WMA Closure Area



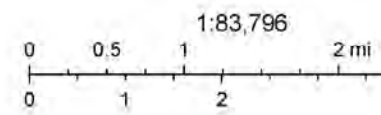
11:08:50 AM

- Closures
- Trails, Trailheads, OHV Areas
- High-clearance (all OHVs and 4WD)
- High-clearance (Seasonal)
- E-Bike (See notes for Class)
- Motorized (OHVs prohibited)
- Non-motorized

- Other Roads (OHVs with Restricted Plate)
- Other Road
- High-clearance (all OHVs and 4WD)
- High-clearance (Seasonal)
- E-Bike (See notes for Class)
- Non-motorized

- Non-mechanized
- Area Restrictions
- Counties
- Publicly Accessible Endowment Lands (IDL)
- Yes
- National Forests

- BLM Land Unit Boundaries
- Current Incidents
- 1,000-9,999



Esri, NASA, NGA, USGS, County of Ada, Esri, TerraMetrics, SafeGraph, GeoTechnologies, Inc, METI/NASA, USGS, National Land Management, EPA, NPS, USDA, USFWS