

STATE BOARD OF LAND COMMISSIONERS

September 17, 2024

Department Report

Subject

Fire Season Update

Background

As of September 13, Emergency Fire Suppression expenditures are estimated to be \$51,132,500. The suppression account will recover an estimated \$5,154,000 of reimbursable costs, for a net obligation of \$45,798,500. The total obligation includes the 2024 contracted aircraft costs and prepositioned contract engines to assist with a lack of qualified engine bosses. These engines will be assigned across the state to boost initial attack resources.

Discussion

On September 2, the Chimney Fire was reported 9 miles northwest of Fairfield. The fire has burned 6,475 acres and is 10 percent contained. The fire is burning on mixed ownership of IDL, BLM, and USFS. The fire is being suppressed by a Complex Incident Management Team (CIMT).

On August 5, the Flat Fire was reported eleven miles north of Idaho City. The fire has burned 3,734 acres and is 100 percent contained. The fire was suppressed by a Great Basin Complex Incident Management Team (CIMT).

On August 31, the County Line fire broke out near Plummer, ID. The fire required immediate evacuation notices and quickly grew to 150 acres. It was 80 percent contained by the next day, and now 100 percent contained.

Fire Season Comparison to Date

Number and Size of Fires (Year to Date)				
Year	Human	Lightning	Total	Acres
2020	173	49	222	4,853
2021	227	154	381	141,883
2022	111	133	244	3,887
2023*	195	76	271	2,577
2024*	180	112	292	48,336
20 Yr. Average (2002-2022)			271	24,567

*2024 and 2023 fires are calculated using the protection boundaries of the new Idaho Master Agreement which has increased the area in which IDL is the protecting agency. Therefore, there is an inconsistency between 2023/2024 numbers and 20-year averages.

The first part of September has been much warmer and drier than average. Idaho has recently received a significant amount of rain throughout the state. Due to the number of large fires and variations in rainfall amounts, fire will continue to be a lingering problem, but the risk is reduced as compared with a few weeks ago.

Restrictions are present in central and southern Idaho, as shown on the attached map.

Significant Fires Outside of IDL Protection

Lava Fire

Agency/Management: Boise National Forest (USFS)
General Location: 12 miles southwest of Cascade, ID
Acres burned: 94,589 acres, 6 percent contained

Wapiti Fire

Agency/Management: Boise National Forest (USFS)
General Location: 14 miles west of Stanley, ID
Acres burned: 125,429 acres, 12 percent contained

Middle Fork Complex (2 fires)

Agency/Management: Boise National Forest (USFS)
General Location: 9 miles east of Garden Valley, ID
Acres burned: 61,159 acres, 32 percent contained

Snag Fire

Agency/Management: Boise National Forest (USFS)
General Location: 18 miles northeast of Cascade, ID
Acres burned: 33,244 acres, 15 percent completion

Total Acres Burned by Ownership	
9/13/2024	
Surface Owner	Acres
Bureau of Land Management	233,269
Other Federal	8,764
Other State	2,937
Private	120,448
State Endowment	33,027
Tribal	935
U.S. Forest Service	402,662
Other	1,024
Total Acres	803,066

Only fires with perimeters in the Fire Enterprise Geospatial Portal have been included in the analysis.

Fire Deficiency Warrant Spending - 2024 Fire Season YTD		
Category	Estimated Costs	Notes
Aviation Resources	\$3,500,000	4 SEATS, 4 Single Engine Water Scooper (Fire Boss), 1 Type 1 UH-60 Blackhawk
Prepositioned Engines	\$787,500	5 Type 6 Exclusive Use Contract Engines
IDL Non-Team Fires	\$7,451,000	IDL/Assn fires including pre-positioning. Based on Estimates and actuals.
IDL Team Fires	\$29,920,000	Billy Creek (CIMT-CMS), Texas (CIMT-PDS), Cherry (IDL T3-CMS), Steelhead (IDL T3-CMS), Rock Creek (CIMT-CMS), Flat (CIMT-SWS), Chimney (CIMT-EIS)
Other Suppression Non-reimbursable	\$4,320,000	Coeur d'Alene Cache, Dispatch- Estimate includes expenditures from 1/1/2024-7/1/2024
Other Suppression Reimbursable	\$5,154,000	Reimbursable (IDL and Fire Department resources supporting non-IDL fires). Based on LUMA Actuals- estimates not used.
Total Estimate YTD	\$51,132,500	Does not include Cost Share Fires which will be reported in October

Attachments

1. Map—Significant Fires
2. Map—Fire Restrictions

2024 Wildland Fires in Idaho

9/13/2024

Fire Perimeter Categories

- Current Month
- Last Month
- Two Months Ago
- Three Months and Older

Surface Management Categories

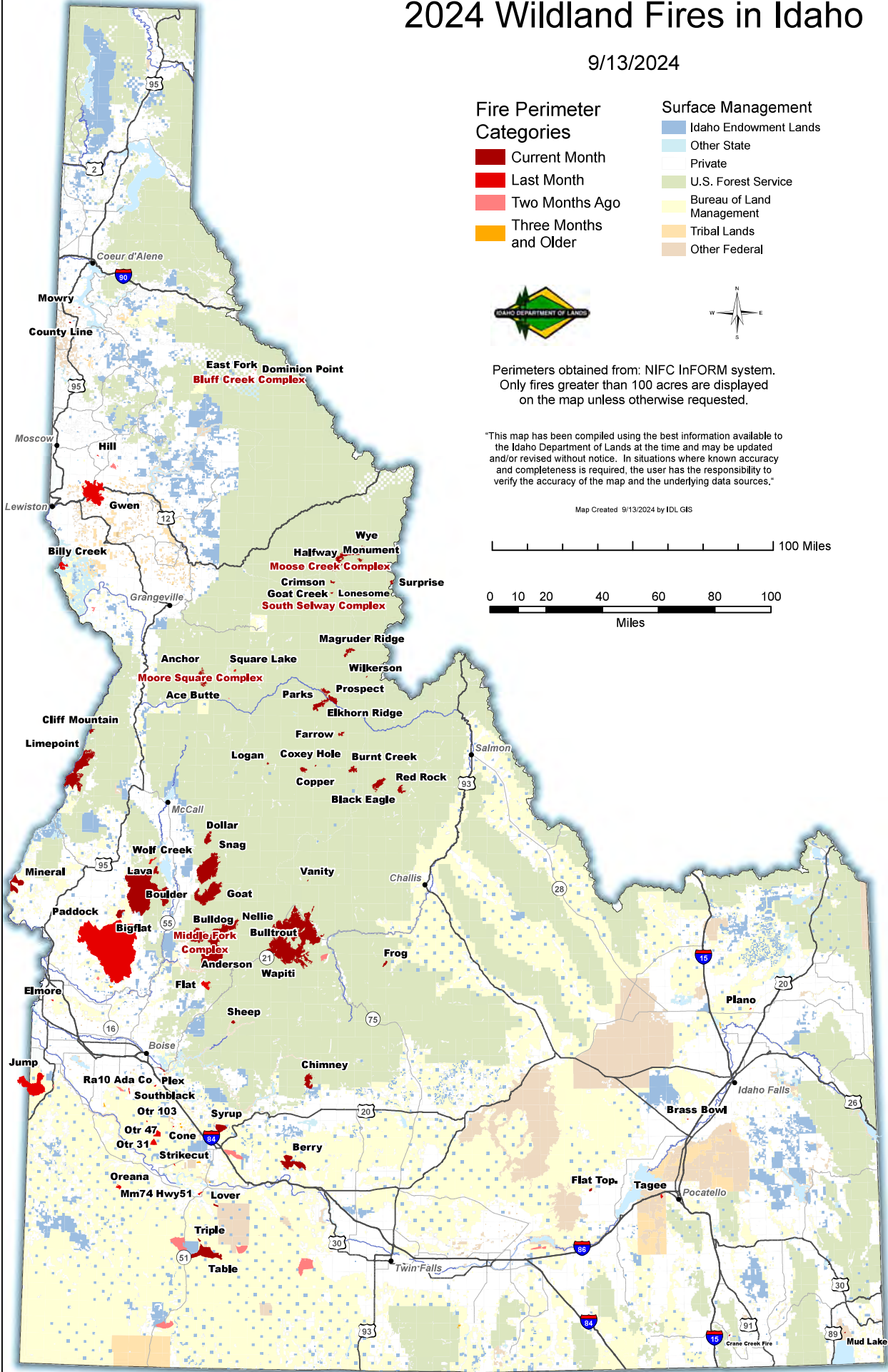
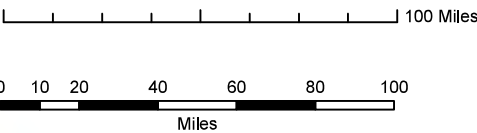
- Idaho Endowment Lands
- Other State
- Private
- U.S. Forest Service
- Bureau of Land Management
- Tribal Lands
- Other Federal



Perimeters obtained from: NIFC InFORM system.
Only fires greater than 100 acres are displayed on the map unless otherwise requested.

"This map has been compiled using the best information available to the Idaho Department of Lands at the time and may be updated and/or revised without notice. In situations where known accuracy and completeness is required, the user has the responsibility to verify the accuracy of the map and the underlying data sources."

Map Created 9/13/2024 by IDL GIS



Idaho Fire Restrictions

9/13/2024

Restriction Stage

- Stage II
- Stage I
- No Restriction

Restriction Area	Restriction Zone	Restriction	Date Enacted
Boise	Owyhee,Treasure Valley	None	
Boise	West Central	Stage I	08/05/2024
Central Idaho	Central Idaho	None	
Coeur d'Alene	South Zone,North Zone,Kaniksu	None	
East Idaho	Centennial,Big Desert,Caribou Highlands	None	
Grangeville	Grangeville Fire Restriction Area	None	
Payette	Little Salmon Zone,Weiser River Zone,Payette NF West Zone,Payette NF East Zone,Long Valley/Meadows Valley Zone	None	
South Idaho	Sawtooth North (National Forest),Cassia Zone (National Forest)	Stage I	07/17/2024
South Idaho	Three Creek Zone,Cassia Zone,Shoshone Zone,Sawtooth North	None	



"This map has been compiled using the best information available to the Idaho Department of Lands at the time and may be updated and/or revised without notice. In situations where known accuracy and completeness is required, the user has the responsibility to verify the accuracy of the map and the underlying data sources."

Map Created 9/13/2024 by IDL GIS

