

STATE BOARD OF LAND COMMISSIONERS

August 20, 2024
Department Report

Subject

Fire Season Update

Background

As of August 19, Emergency Fire Suppression expenditures are estimated to be \$29,717,500. The suppression account will recover an estimated \$2,670,000 of reimbursable costs, for a net obligation of \$27,047,500. The total obligation includes the 2024 contracted aircraft costs and prepositioned contract engines to assist with a lack of qualified engine bosses. These engines will be assigned across the state to boost initial attack resources.

Discussion

On August 5, the Flat Fire was reported eleven miles north of Idaho City. The fire has burned 3,380 acres and is 14 percent contained. The fire is being suppressed by a Great Basin Complex Incident Management Team (CIMT).

On July 25, the Rock Creek Fire started 28 miles west of Grangeville. The fire burned 677 acres and is out. The fire was suppressed by a Complex Incident Management Team (CIMT).

Fire Season Comparison to Date

Number and Size of Fires (Year to Date)				
Year	Human	Lightning	Total	Acres
2020	77	20	97	330
2021	173	109	282	115,970
2022	75	27	102	421
2023*	152	46	198	1,969
2024*	149	94	243	23,572
20 Yr. Average (2002-2022)			166	18,434

*2024 fires are calculated using the protection boundaries of the new Idaho Master Agreement which has increased the area in which IDL is the protecting agency. Therefore, there is an inconsistency between 2023/2024 numbers and 20-year averages.

July saw a strong increase in both fire size and frequency, in large part due to a very hot and dry June and July. Temperatures throughout the state were well above average and precipitation was minimal. The grasses have cured; any additional precipitation will have a short-term effect on reducing fire spread. Northern Idaho has seen some rainfall, but fire danger will quickly rebound once the warmer weather returns. Elevated fire danger is expected throughout Idaho into September.

Restrictions are present throughout the state, as shown on the attached map.

Significant Fires Outside of IDL Protection

Gwen Fire*

Agency/Management: Nez Perce Tribe

General Location: 5 miles east of Lapwai, ID

Acres burned: 28,410 acres, 85 percent contained

*This fire started on the Nez Perce Tribe protection and crossed to IDL protection and threatened the town of Julietta. The fire destroyed 143 structures and 19,713 acres of IDL assessed land. Fire acreage is not included in the IDL reported numbers because numbers are based off the original protection of the fire.

Paddock Fire

Agency/Management: Bureau of Land Management

General Location: 30 miles southwest of Cascade

Acres burned: 187,185 acres, 100 percent contained

Limepoint Fire

Agency/Management: Payette National Forest (USFS)

General Location: 24 miles northwest of Council and 3 miles southwest of Cuprum, ID

Acres burned: 31,726 acres, 51 percent contained

Wolf Creek Fire

Agency/Management: Payette National Forest (USFS)

General Location: 11 miles northwest of Cascade, ID

Acres burned: 1,154 acres, 90 percent contained

Boulder Fire

Agency/Management: Boise National Forest (USFS)

General Location: 9 miles southwest of Cascade, ID

Acres burned: 2,134 acres, 26 percent contained

Middle Fork Complex (2 fires)

Agency/Management: Boise National Forest (USFS)

General Location: 9 miles east of Garden Valley, ID

Acres burned: 15,629 acres, 5 percent contained

Snag Fire

Agency/Management: Boise National Forest (USFS)

General Location: 18 miles northeast of Cascade, ID

Acres burned: 20,948 acres, 0 percent contained

Dollar Fire

Agency/Management: Boise National Forest (USFS)

General Location: 9 miles southwest of Cascade, ID

Acres burned: 1,814 acres, 0 percent contained

Wapiti Fire

Agency/Management: Boise National Forest (USFS)

General Location: 14 miles west of Stanley, ID

Acres burned: 4,943 acres, 10 percent contained

Total Acres Burned by Ownership	
8/18/2024	
Surface Owner	Acres
Bureau of Land Management	176,588
Other Federal	5,603
Other State	2,843
Private	98,978
State Endowment	26,770
Tribal	897
U.S. Forest Service	86,563
Other	812
Total Acres	399,054

Only fires with perimeters in the Fire Enterprise Geospatial Portal have been included in the analysis.

Fire Deficiency Warrant Spending – 2024 Fire Season YTD		
Category	Estimated Costs	Notes
Aviation Resources	\$3,500,000	4 SEATS, 4 Single Engine Water Scooper (Fire Boss), 1 Type 1 UH-60 Blackhawk
Prepositioned Engines	\$787,500	5 Type 6 Exclusive Use Contract Engines
IDL Non-Team Fires	\$3,900,000	IDL/Assn fires including pre-positioning. Based on Estimates and actuals.
IDL Team Fires	\$14,540,000	Billy Creek (CIMT-CMS), Texas (CIMT-PDS), Cherry (IDL T3-CMS), Steelhead (IDL T3-CMS), Rock Creek (CIMT-CMS)
Other Suppression Non-reimbursable	\$4,320,000	Coeur d'Alene Cache, Dispatch- Estimate includes expenditures from 1/1/2024-7/1/2024
Other Suppression Reimbursable	\$2,670,000	Reimbursable (IDL and Fire Department resources supporting non-IDL fires). Based on LUMA Actuals - estimates not used.
Total Estimate YTD	\$29,717,500	Does not include Cost Share Fires which will be reported in October.

Attachments

1. Map–Significant Fires
2. Map–Fire Restrictions

2024 Wildland Fires in Idaho

8/16/2024



- Current Month
- Last Month
- Two Months Ago
- Three Months and Older

Surface Management

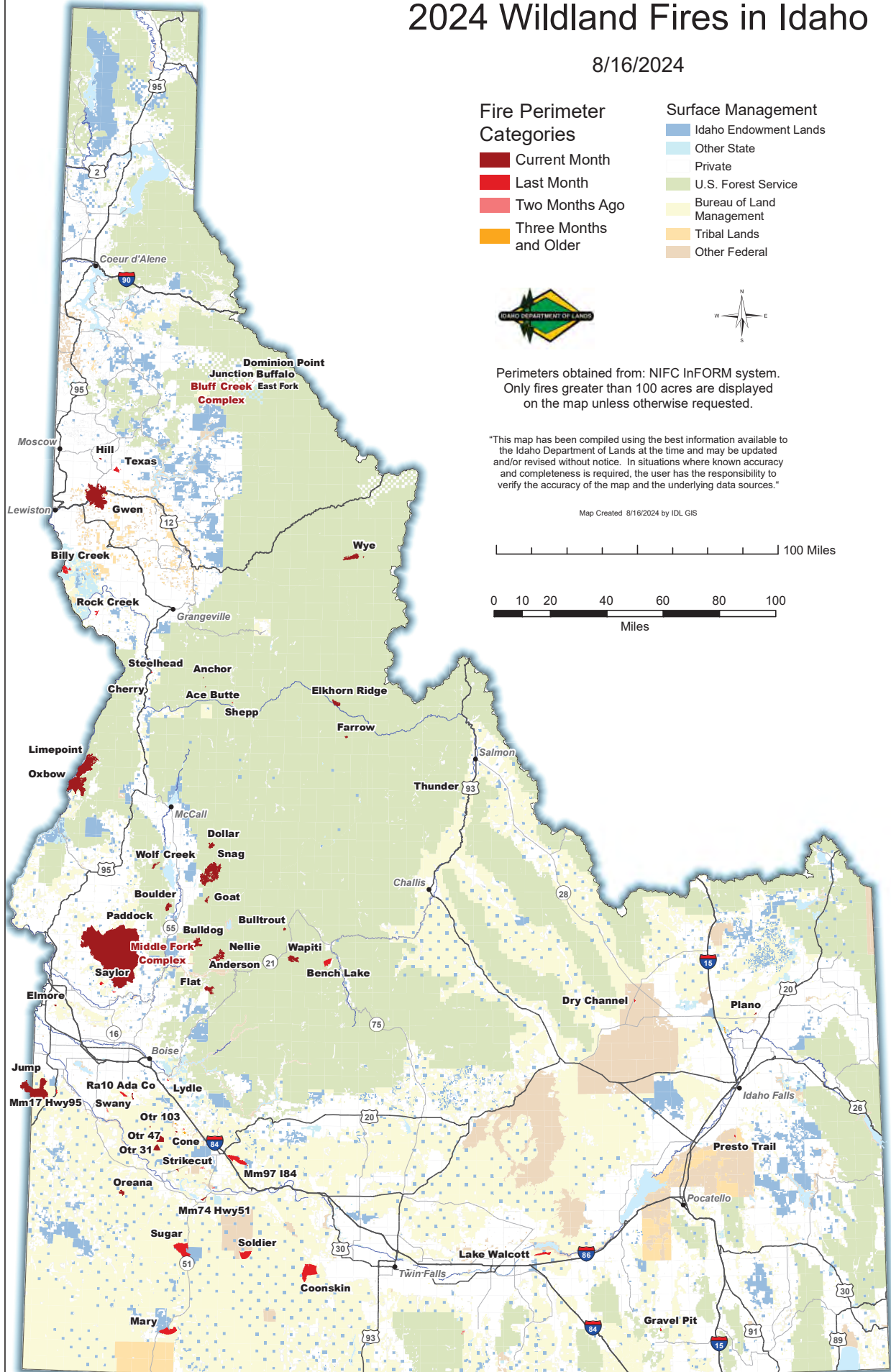
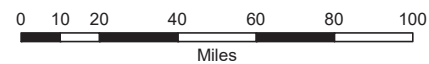
- Idaho Endowment Lands
- Other State
- Private
- U.S. Forest Service
- Bureau of Land Management
- Tribal Lands
- Other Federal



Perimeters obtained from: NIFC InFORM system.
Only fires greater than 100 acres are displayed
on the map unless otherwise requested.

"This map has been compiled using the best information available to the Idaho Department of Lands at the time and may be updated and/or revised without notice. In situations where known accuracy and completeness is required, the user has the responsibility to verify the accuracy of the map and the underlying data sources."

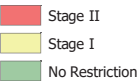
Map Created 8/16/2024 by IDL GIS



Idaho Fire Restrictions

8/16/2024

Restriction Stage



Restriction Area	Restriction Zone	Restriction	Date Enacted
Boise	Owyhee, Treasure Valley	None	
Boise	West Central	Stage I	08/05/2024
Central Idaho	Central Idaho	Stage I	07/19/2024
Coeur d'Alene	South Zone, North Zone, Kaniksu	None	
East Idaho	Centennial, Big Desert, Caribou Highlands	None	
Grangeville	Grangeville Fire Restriction Area	Stage I	07/20/2024
Payette	Little Salmon Zone, Weiser River Zone, Payette NF West Zone, Payette NF East Zone, Long Valley/Meadows Valley Zone	Stage I	07/26/2024
South Idaho	Sawtooth North (National Forest), Cassia Zone (National Forest)	Stage I	07/17/2024
South Idaho	Three Creek Zone, Cassia Zone, Shoshone Zone, Sawtooth North	None	



"This map has been compiled using the best information available to the Idaho Department of Lands at the time and may be updated and/or revised without notice. In situations where known accuracy and completeness is required, the user has the responsibility to verify the accuracy of the map and the underlying data sources."

Map Created 8/16/2024 by IDL GIS

