

All IDL aviation resources are available statewide to aid in wildland fire suppression. Though based as indicated in the information below they will be moved as dictated by fire activity.

- One **Type 1 helicopter** with Helicopter Managers. Capable of delivering 1,000 gals of water via detachable fixed tank or 900 gals of water via bucket, per drop. This resource is anticipated to begin in Coeur d'Alene, and move to Grangeville for the majority of the season.
 - VENDOR: HeliQwest, Broomfield, CO

Coeur d'Alene:

- Four **AWS (Amphibious Water Scooper)**, also known as a **FireBoss**. Capable of delivering 800 gallons of retardant, BlazeTamer380, or water on the first drop. Subsequent drops of 800 gallons of water scooped from an adequate lake or river, or BlazeTamer380 following scoop from lake or river. FireBosses are capable of mixing BlazeTamer gel while en route to a fire after scooping from a water source. Returns to Air Tanker Base to refuel and can then again deliver retardant on first load when requested. Note: two of the four FireBosses will have on-board mixing capabilities needed for BlazeTamer380 and two will not.
 - VENDOR: Dauntless Air, Appleton, MN

Grangeville:

- Two **SEATs (Single Engine Air Tanker)**. Air Tractor 802 capable of delivering 800 gallons of water or retardant per drop. Returns to Air Tanker Base after each drop for refilling with retardant and, if necessary, fuel.
 - VENDOR: Aero Tech, Inc., Clovis, NM


McCall:

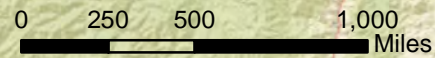
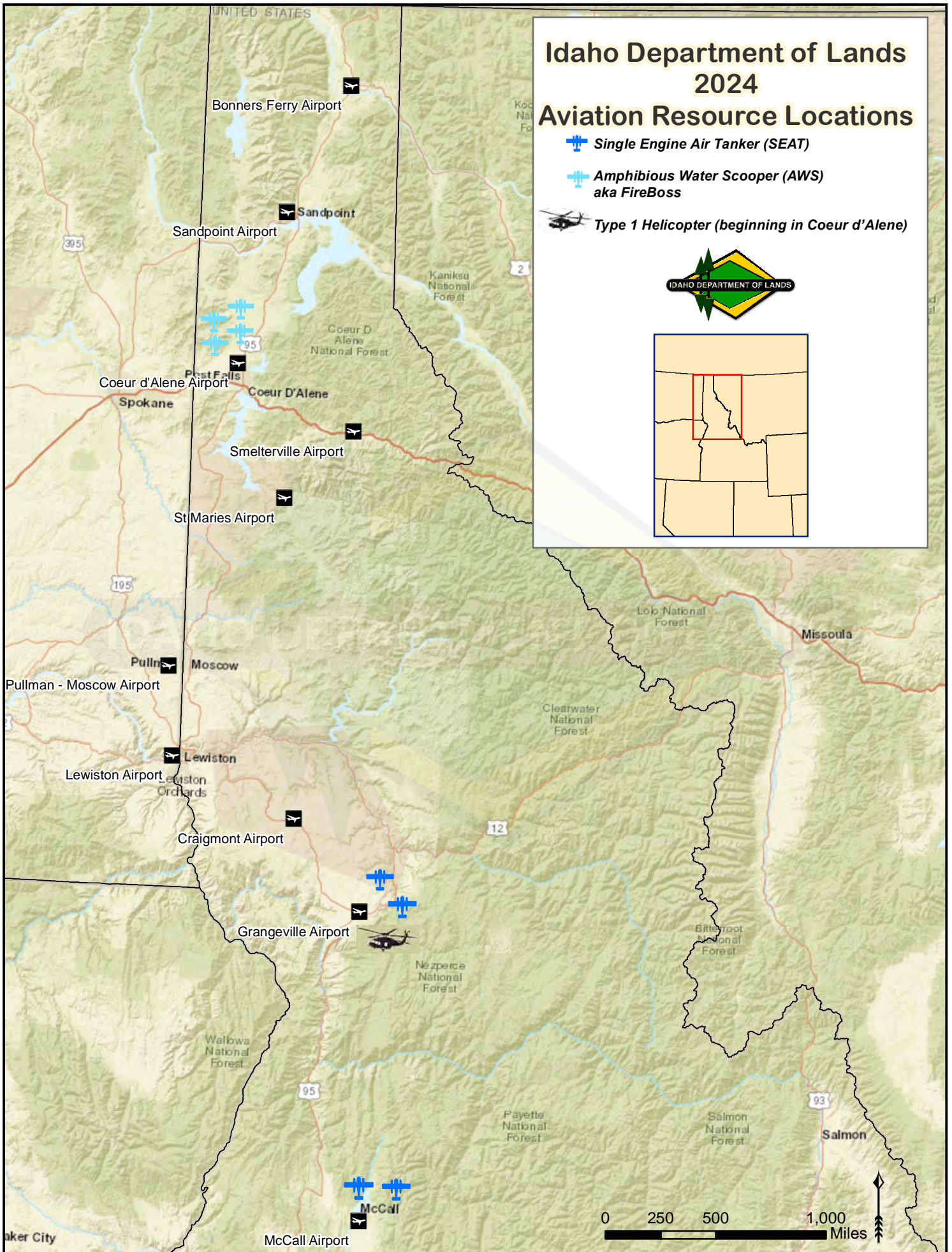
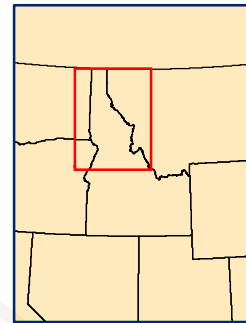
- Two **SEATs (Single Engine Air Tanker)**. Air Tractor 802 capable of delivering 800 gallons of water or retardant per drop. Returns to Air Tanker Base after each drop for refilling with retardant and, if necessary, fuel.
 - VENDOR: Aero Tech, Inc., Clovis, NM

Idaho Department of Lands 2024 Aviation Resource Locations

 **Single Engine Air Tanker (SEAT)**

 **Amphibious Water Scooper (AWS)
aka FireBoss**

 **Type 1 Helicopter (beginning in Coeur d'Alene)**



Idaho Department of Lands 2024 Resource Locations

KEY

State totals in parentheses

Engine (31)

Engine Crew
Total persons (108)

Northern Suppression Module
6 person (1)

Teakean Hand Crew
20 person (1)

Engine Foremen
Total persons (13)

Contract Engines (5)

Southern Suppression Module
5 person (1)

Legend

- East Idaho FPD
- National Parks Service
- Bureau of Land Management
- Private
- Other Federal
- State
- Indian Reservation
- United States Forest Service

Kootenai Valley

Priest Lake

Pend Oreille

CdA Airport

Mica

Cataldo

West St. Joe

Ponderosa

CPTPA

Craig Mountain

Maggie Creek

Grangeville Airport

CPTPA Has Additional Resources

IDAHO DEPARTMENT OF LANDS



SITPA Has Additional Resources

McCall Airport

SITPA

Southwest

Boise

Jerome

Black Canyon RFFA

Weiser River RFFA

Owyhee RFFA

Saylor Creek RFFA

Three Creek RFFA

Shoshone Basin RFFA

Mountain Home RFFA

Notch Butte RFFA

East Idaho Forest Protective District Under Development

Idaho Falls

Camas Creek RFFA

Henry's Creek RFFA

Henry's Creek RFFA



IDAHO RANGELAND FIRE PROTECTION ASSOCIATIONS 2024

As of 2024, over 700 volunteer wildland firefighters have been trained by agency fire managers. These volunteers provide an important resource not only for their own land and assets, but also assist wildland fire managers protecting public lands.

The ten RFPAs combined protect 1.9 million acres of private rangeland that was previously unprotected, as well as providing secondary protection on 7.4 million acres of federal and state land.

Discussions have begun with interested parties in the Fort Hall area for a new RFPA, the expectation would be for a start date in 2025 or 2026.

2023 FIRE SEASON REVIEW

2023 was a relatively quiet fire season, with less than half of the previous year’s activity.

2024 FIRE SEASON PREPAREDNESS

Over 300 RFPA members attended in-person Fireline Refresher Training and 21 new members attended Basic Wildland Fire classes.

With assistance from the Governor’s Office of Species Conservation, Henry’s Creek purchased a Type 4 engine from IDL, and Owyhee RFPA purchased a Type 4 engine from a neighboring fire department. IDL was able to provide Saylor Creek RFPA with a Type 6 engine through the Federal Excess Personal Property program. This equipment will allow these RFPAs to provide more strategic coverage in their protection areas.

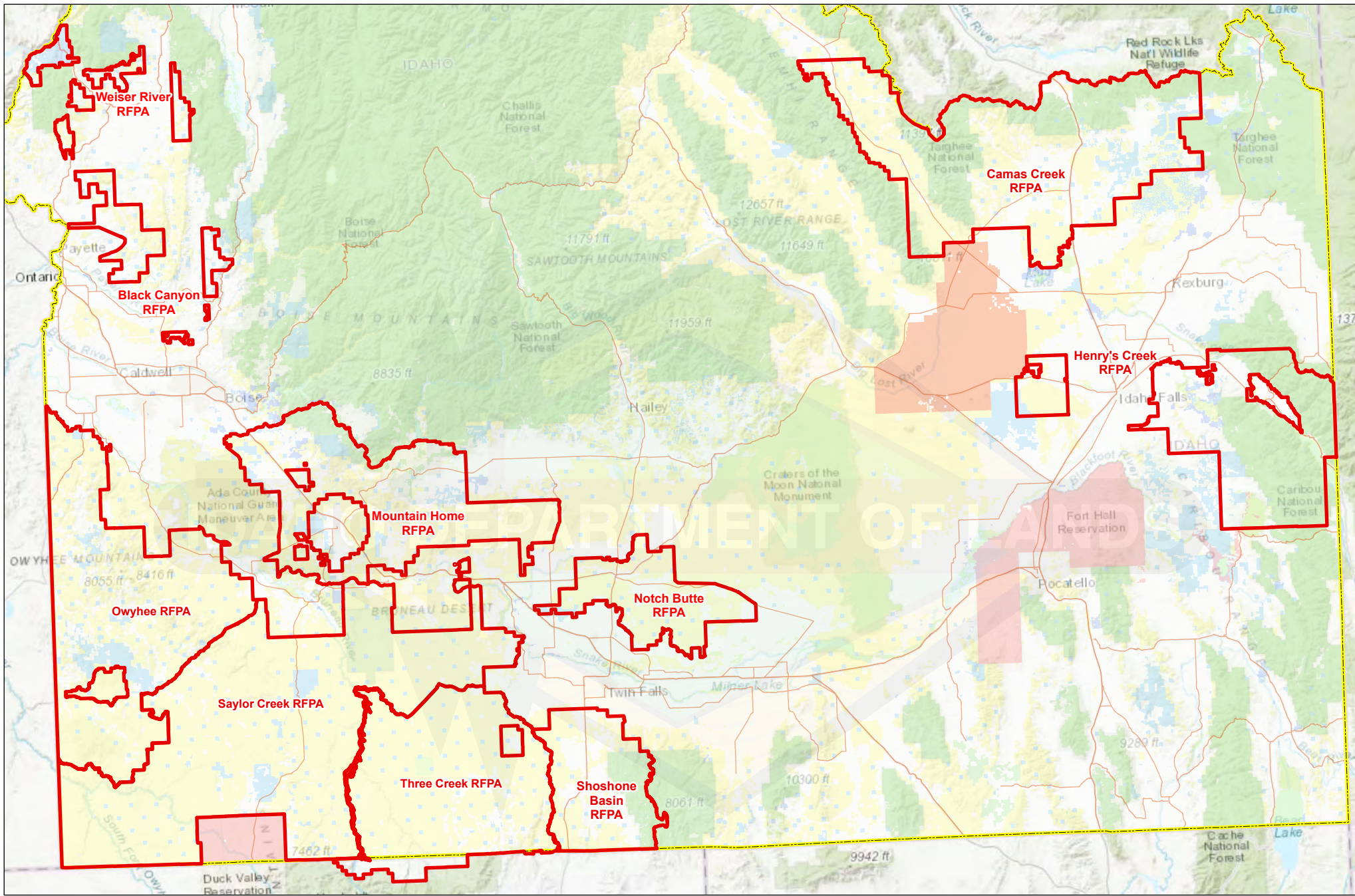
IDAHO RFPAS AT A GLANCE

RFPA	Established	Members ¹	Acres	Private	Federal ²	State ³	'23 Fires
Black Canyon	2013	19	185,384	108,555	61,111	15,719	0
Camas Creek	2016	28	1,494,608	363,005	1,019,277	112,327	1
Henry’s Creek	2017	15	914,696	286,775	571,374	56,547	2
Mountain Home	2012	40	964,131	300,091	564,138	98,174	8
Notch Butte	2016	16	341,170	74,535	247,745	18,890	1
Owyhee	2013	32	1,370,873	254,175	972,268	144,430	5
Saylor Creek	2013	54	2,222,204	131,128	1,964,913	126,162	1
Shoshone Basin	2015	19	488,054	174,940	302,144	10,969	4
Three Creek	2013	62	1,120,203	114,599	951,243	54,362	2
Weiser River	2021	29	135,212	60,246	38,252	27,208	3
TOTALS		314	9,381,444	1,868,049	6,692,465	664,788	27

¹ Received Red Card for the 2024 fire season as of 5/31/2024. The Red Card identifies that annual training is current.

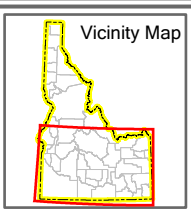
² Federal includes Military, NPS, BOR, BIA, DOE, BLM and USFS ownership.

³ State includes Endowment, State F&G, State Parks, and State other.



Legend

- Highways
- Existing RFPA
- Bureau of Land Management
- DOE-INL
- Tribal
- Private
- State Endowment
- Other State Land
- US Forest Service
- Other Federal Ownership
- Idaho Boundary



Rangeland Fire Protection Associations

5/24/2024

0 10 20 40 60 Miles



Map Notes and Data Sources
 Ownership current as of map date

Disclaimer:
 This map has been compiled using the best information available to the Idaho Department of Lands at the time and may be updated and/or revised without notice. In situations where known accuracy and completeness is required, the user has the responsibility to verify the accuracy of the map and the underlying data sources.

C.2