

# FISCAL YEAR 2025 PROPOSED TIMBER SALES PLAN



# IDAHO DEPARTMENT OF LANDS FY24 TIMBER SALE PLAN

July 1, 2024 – June 30, 2025

## TABLE OF CONTENTS

Types of Sales .....	3
Supervisory Area Offices .....	4-5
Administrative Rules and Timber Sale Financing & Purchasing .....	6
Priest Lake .....	8-12
Pend Oreille Lake .....	13-16
Mica .....	17-18
St. Joe .....	19-24
Clearwater .....	25-31
Ponderosa .....	32-34
Maggie Creek .....	35-37
Payette Lakes .....	38-41
Southwestern Idaho .....	42
Eastern Idaho .....	43

IDAHO DEPARTMENT OF LANDS

# IDAHO DEPARTMENT OF LANDS FY24 TIMBER SALE PLAN

July 1, 2024 – June 30, 2025

## [Types of Sales](#)

### Timber Sales

Timber sales contain an estimated volume of at least 1,000 MBF and exceed the net appraised stumpage value for salvage sales established by the state board of land commissioners. Timber sales are designed to produce maximum stumpage returns to the endowment funds consistent with prudent long-term management practices.

Timber sales are advertised for four weeks in a newspaper in the county where the sale is located, and are sold at public auction.

### Direct Sales

Direct Sale net appraised stumpage value does not exceed the maximum value established by the State Board of Land Commissioners. This type of sale is to be used to harvest isolated or by-passed parcels of timber of insufficient value and volume to justify a salvage sale. The direct sale is not used where two or more potential purchasers may be interested in bidding on the forest products offered for sale.

The direct sale of forest product stumpage is made without advertisement as authorized by the Director.

# IDAHO DEPARTMENT OF LANDS FY24 TIMBER SALE PLAN

July 1, 2024 – June 30, 2025

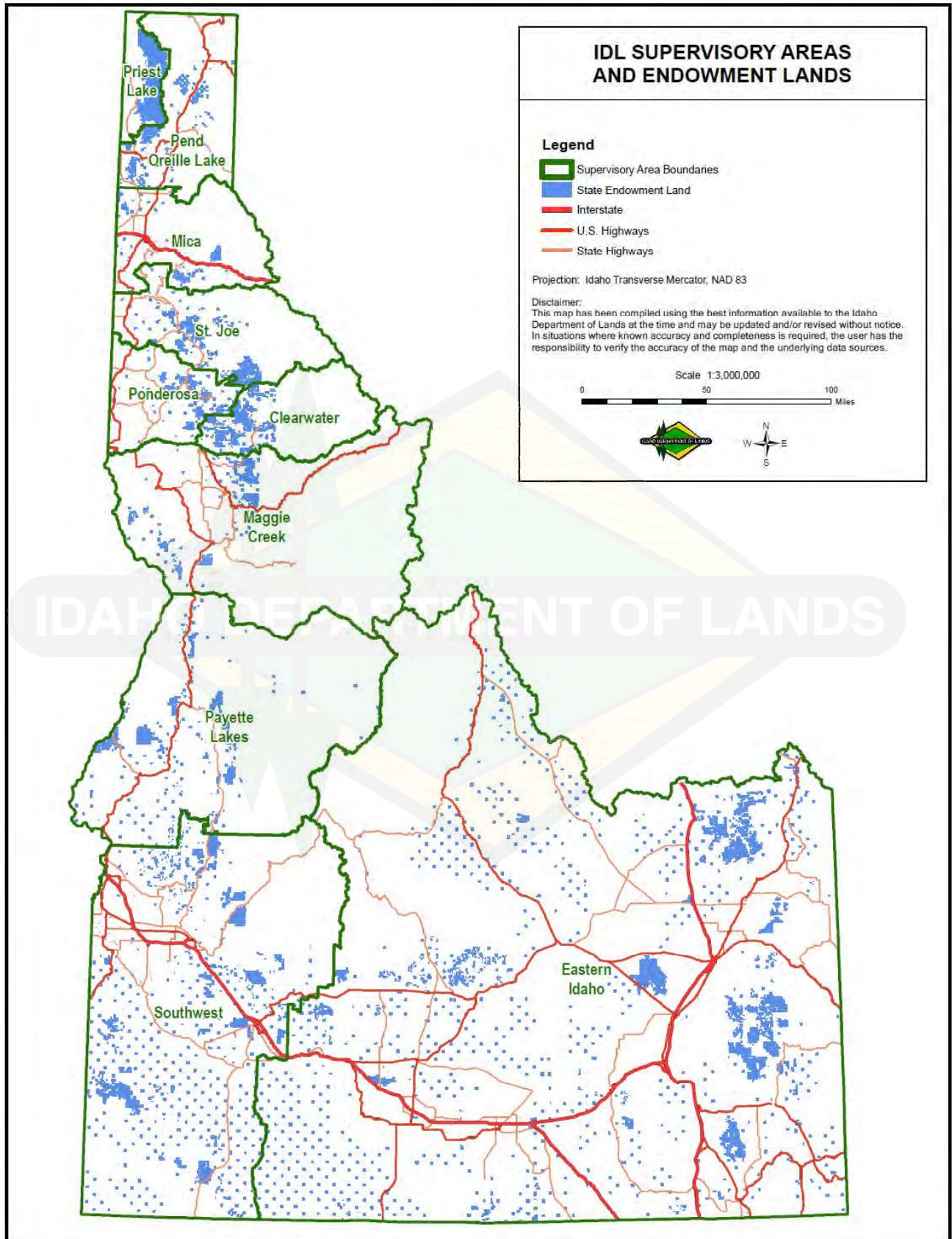
## [Supervisory Area Offices](#)

<b>SUPERVISORY AREA</b>	<b>AREA SUPERVISOR</b>	<b>PHONE</b>
<b>Priest Lake</b> 4053 Cavanaugh Bay Road Coolin, ID 83821	Dan Brown	(208) 443-2516
<b>Pend Oreille Lake</b> 2550 Highway 2 West Sandpoint, ID 83864	Erik Sjoquist	(208) 263-5104
<b>Mica</b> 3706 Industrial Avenue S Coeur d'Alene, ID 83815	Andrew Smyth	(208) 769-1577
<b>St. Joe</b> 1806 Main Avenue St. Maries, ID 83861	Tony Brede	(208) 245-4551
<b>Ponderosa</b> 3130 Highway 3 Deary, ID 83823	Chris Tretter	(208) 877-1121
<b>Clearwater</b> 10230 Highway 12 Orofino, ID 83544	Jay Sila	(208) 476-4587
<b>Maggie Creek</b> 913 Third Street Kamiah ID 83536	Dave Schwartz	(208) 935-2141
<b>Payette Lakes</b> 555 Deinhard Lane McCall, ID 83638	Scott Corkill	(208) 634-7125
<b>Southwest/South Central</b> 8355 W. State Street Boise, ID 83703	Dean Johnson	(208) 334-3488
<b>Eastern Idaho</b> 3563 Ririe Highway Idaho Falls, ID 83401	Ryan Woodland	(208) 525-7167



# IDAHO DEPARTMENT OF LANDS FY24 TIMBER SALE PLAN

July 1, 2024 – June 30, 2025



# IDAHO DEPARTMENT OF LANDS FY24 TIMBER SALE PLAN

July 1, 2024 – June 30, 2025

## Administrative Rules and Purchaser Sale Requirements

*Links to detailed information on the internet are provided below.*

### Administrative Rules of the Department of Lands

#### [20.02.14 – Selling Forest Products on State-Owned Endowment Lands](#)

For information regarding timber sale procedures, bidding procedures, bonding requirements and insurance requirements, click on the link below.

#### [Purchaser Sale Requirements](#)

IDAHO DEPARTMENT OF LANDS

# Idaho Department of Lands Fiscal Year 2025 Proposed Timber Sale Plan

This Fiscal Year 2025 Proposed Timber Sale Plan will be presented to the Idaho Board of Land Commissioners at the April 2024 Land Board meeting for approval.

All timber sales listed on the 2025 Proposed Timber Sale Plan have been available for public review on the Notice of Proposed Future Sales on the IDL timber sale website since May 2022.

Comments regarding this proposed plan will be accepted until March 31, 2024. Send comments, preferably via email, to:

Jeremy Shawver  
Idaho Department of Lands  
Section Manager Timber Sales/Contract Admin  
Email address: [jshawver@idl.idaho.gov](mailto:jshawver@idl.idaho.gov)  
3284 W. Industrial Loop  
Coeur d'Alene, ID 83815



IDAHO DEPARTMENT OF LANDS

**IDAHO DEPARTMENT OF LANDS FISCAL YEAR 2025 TIMBER SALE PLAN**

July 1, 2024 - June 30, 2025

**Priest Lake  
Supervisory Area**

Sale Name:

**Bear Parts**

Estimated Auction: Fall 2024  
 Location: 13 Miles North of Coolin, ID  
 Drainages: Bear Creek and Indian Creek  
 Class I Streams: No  
 Class II Streams: Yes  
 Silvicultural Prescription: Clearcut, Overstory Removal, Seedtree  
 Harvest System: Cable Yarding, Ground - Based

APPROXIMATE  
 ACREAGE: 1,003 acres      VOLUME: 4,000 MBF

Timber Sale Legal Description

Subsection	Section	Township	Range
Gov Lots 2, 3, Pts Gov Lots 1, Pts Gov Lots 1, 4, Pts S2NE, Pts SWNW, Pts NESW, Pts	01	061N	004W
Pts SENE, Pts E2SE	02	061N	004W
Pts NE, Pts NESE, Pts S2SE	11	061N	004W
Pts NWNW	12	061N	004W
Pts N2NE, Pts SWNE, Pts S2NW, Pts SW, Pts NWSE	14	061N	004W
Pts SESE	15	061N	004W
Pts NE	22	061N	004W
Pts NW	23	061N	004W
Pts Gov Lots 4, Pts Gov Lots 4, Pts SESW	30	062N	003W
Pts Gov Lots 1, 2, 3, 4, Pts Gov Lots 1, 2, 3, 4, Pts W2NE, Pts E2NW, Pts NESW	31	062N	003W
Pts SESE	25	062N	004W
Pts NENE, Pts SWNE, Pts S2NW, Pts N2SW, Pts SWSW, SENE, SESW, SE	36	062N	004W

Sale Name:

**Boyds Bugle**

Estimated Auction: Spring 2025  
 Location: 25 Miles North of Coolin, ID  
 Drainages: Bugle Creek and Caribou Creek  
 Class I Streams: Yes  
 Class II Streams: Yes  
 Silvicultural Prescription: Clearcut, Seedtree  
 Harvest System: Cable Yarding, Ground - Based

APPROXIMATE  
 ACREAGE: 648 acres      VOLUME: 3,900 MBF

Timber Sale Legal Description

Subsection	Section	Township	Range
Pts SWSW	02	063N	004W
Pts E2SW, Pts SE	03	063N	004W
Pts NE, Pts E2NW	10	063N	004W
E2NE, E2SE, Pts SWNE, Pts W2NW, Pts N2SW, Pts SESW, Pts W2SE	11	063N	004W
NWSW, Pts SWNE, Pts NWNW, Pts S2NW, Pts NESW, Pts S2SW, Pts NWSE	12	063N	004W
Pts W2NW	13	063N	004W
NENE, Pts NWNE, Pts S2NE, Pts NENW	14	063N	004W



**IDAHO DEPARTMENT OF LANDS FISCAL YEAR 2025 TIMBER SALE PLAN**

July 1, 2024 - June 30, 2025

**Priest Lake  
Supervisory Area**

Sale Name:

**Hunt Cedar**

Estimated Auction: Winter 2025  
 Location: 7 Miles Northeast of Coolin, ID  
 Drainages: Hunt Creek  
 Class I Streams: Yes  
 Class II Streams: Yes  
 Silvicultural Prescription: Clearcut, Seedtree  
 Harvest System: Cable Yarding, Ground - Based

APPROXIMATE  
 ACREAGE: 402 acres      VOLUME: 4,500 MBF  
 500 Poles

Timber Sale Legal Description

Subsection	Section	Township	Range
Pts Gov Lots 6, 7, E2SW, SWSE, Pts SWNE, Pts SENW, Pts N2SE, Pts SESE	06	060N	003W
Pts Gov Lots 1, Pts NE, Pts NENW	07	060N	003W
Pts E2SE, Pts E2SE	01	060N	004W
Pts W2NE, Pts NW, Pts NWSE	11	060N	004W
Pts NENE, Pts NENE	12	060N	004W

Sale Name:

**Jack Frost**

Estimated Auction: Spring 2025  
 Location: 4 Miles South of Coolin, ID  
 Drainages: Priest River  
 Class I Streams: No  
 Class II Streams: No  
 Silvicultural Prescription: Clearcut, Seedtree  
 Harvest System: Ground - Based

APPROXIMATE  
 ACREAGE: 535 acres      VOLUME: 3,600 MBF

Timber Sale Legal Description

Subsection	Section	Township	Range
Gov Lots 4, Pts Gov Lots 1, 2, 3, Pts S2NE, Pts S2NW, Pts SW, Pts SE	03	058N	004W
Pts Gov Lots 1, 2, Pts SENE, Pts E2SE	04	058N	004W
Pts S2SE	33	059N	004W
NESW, Pts W2NE, Pts NENW, Pts S2NW, Pts NWSW, Pts S2SW, Pts NWSE, Pts S2SE	34	059N	004W

**IDAHO DEPARTMENT OF LANDS FISCAL YEAR 2025 TIMBER SALE PLAN**

July 1, 2024 - June 30, 2025

**Priest Lake  
Supervisory Area**

Sale Name:

**Jumpin Jack Flat**

Estimated Auction: Summer 2024  
 Location: 6 Miles South of Coolin, ID  
 Drainages: Priest River  
 Class I Streams: No  
 Class II Streams: Yes  
 Silvicultural Prescription: Seedtree  
 Harvest System: Ground - Based

APPROXIMATE

ACREAGE:  
685 acres

VOLUME:  
4,000 MBF

Timber Sale Legal Description

Subsection	Section	Township	Range
Pts S2SW, Pts S2SE	03	058N	004W
Pts SESE	04	058N	004W
Pts E2NE, Pts NESE	09	058N	004W
NWSW, Pts NE, Pts NW, Pts NESW, Pts S2SW, Pts SE	10	058N	004W
Pts SW	11	058N	004W
Pts W2NW, Pts NWSW	14	058N	004W
Pts NE, Pts NW, Pts NESW, Pts N2SE	15	058N	004W

IDAHO DEPARTMENT OF LANDS



**IDAHO DEPARTMENT OF LANDS FISCAL YEAR 2025 TIMBER SALE PLAN**

July 1, 2024 - June 30, 2025

**Priest Lake  
Supervisory Area**

Sale Name:

**U2 Cedar**

Estimated Auction: Spring 2025

Location: 15 Miles North of Coolin, ID

Drainages: Bear Creek, Goose Creek, Two Mouth Creek

Class I Streams: No

Class II Streams: Yes

Silvicultural Prescription: Clearcut, Seedtree

Harvest System: Cable Yarding, Ground - Based

APPROXIMATE

ACREAGE:  
643 acres

VOLUME:  
3,000 MBF  
500 Poles

Timber Sale Legal Description

Subsection	Section	Township	Range
Pts E2NE, Pts NESE	11	061N	004W
Pts NWNW, Pts S2NW, Pts SW, Pts SWSE	12	061N	004W
NENW, Pts W2NE, Pts NWNW, Pts SENW	13	061N	004W
Pts NENE	14	061N	004W
Gov Lots 3, Pts Gov Lots 2, 4, Pts Gov Lots 3, 4, Pts S2NE, Pts SENW, Pts E2SW, Pts	30	062N	003W
Pts NWNE, Pts NENW	31	062N	003W
Pts Gov Lots 2, 3, Pts NWNE, Pts S2NE, Pts SENW, Pts NESW, Pts S2SW, Pts N2SE	14	062N	004W
Pts SESW, Pts SWSE	24	062N	004W
Pts NESE, Pts NWNE, Pts SENE, Pts NENW, Pts N2SW, Pts SESW, Pts N2SE, S2SE	25	062N	004W

**Supervisory Area Totals: Priest Lake**

Supervisory Area Acres: 4,819 acres  
 Supervisory Area Total Sawlog: 28,000 MBF  
 Supervisory Area Total Cedar Poles: 2,500 Cedar Poles

**IDAHO DEPARTMENT OF LANDS FISCAL YEAR 2025 TIMBER SALE PLAN**

July 1, 2024 - June 30, 2025

**Pend Oreille Lake  
Supervisory Area**

Sale Name:

**Bodie Lookout**

Estimated Auction: Winter 2025  
 Location: 2.5 Miles Northwest of Priest River, ID  
 Drainages: Bodie Creek  
 Class I Streams: No  
 Class II Streams: Yes  
 Silvicultural Prescription: Clearcut, Seedtree  
 Harvest System: Ground - Based, Prescriptive Yarding

APPROXIMATE  
 ACREAGE: 225 acres      VOLUME: 5,029 MBF

Timber Sale Legal Description

Subsection	Section	Township	Range
Pts SWNW, Pts NESW, Pts S2SW, Pts W2SE	15	T56N	R05W
Pts S2NE, Pts SENW, Pts S2	16	T56N	R05W

Sale Name:

**Cocolalla Squeeze Cedar**

Estimated Auction: Summer 2024  
 Location: 2 miles southeast of Westmond, ID  
 Drainages: Cocolalla  
 Class I Streams: No  
 Class II Streams: Yes  
 Silvicultural Prescription: Clearcut  
 Harvest System: Ground - Based, Tractor Skidding

APPROXIMATE  
 ACREAGE: 168 acres      VOLUME: 1,943 MBF  
 200 Poles

Timber Sale Legal Description

Subsection	Section	Township	Range
Pts NWSW, Pts S2SW	16	T55N	R02W
Pts NW	21	T55N	R02W
Pts N2NE, Pts N2NW	28	T55N	R02W

Sale Name:

**Forgotten Fox Cedar**

Estimated Auction: Winter 2025  
 Location: 13 miles northeast of Priest River, ID  
 Drainages: Fox Creek  
 Class I Streams: Yes  
 Class II Streams: Yes  
 Silvicultural Prescription: Clearcut, Seedtree  
 Harvest System: Prescriptive Yarding

APPROXIMATE  
 ACREAGE: 162 acres      VOLUME: 6,000 MBF  
 500 Poles

Timber Sale Legal Description

Subsection	Section	Township	Range
Pts Gov Lots 4	02	T57N	R04W
Pts Gov Lots 16, 17, 18, 19	03	T57N	R04W
Pts Gov Lots 1, 2, 3, 4, Pts NE, Pts E2NW, Pts NESW, Pts NWSE	31	T58N	R03W
Pts N2NW	32	T58N	R03W

**IDAHO DEPARTMENT OF LANDS FISCAL YEAR 2025 TIMBER SALE PLAN**

July 1, 2024 - June 30, 2025

**Pend Oreille Lake  
Supervisory Area**

Sale Name:

**Never Summer**

Estimated Auction: Spring 2025  
 Location: 7 miles south of Priest River  
 Drainages: Curtis Creek  
 Class I Streams: Yes  
 Class II Streams: Yes  
 Silvicultural Prescription: Clearcut, Overstory Removal, Seedtree  
 Harvest System: Prescriptive Yarding

APPROXIMATE  
 ACREAGE: 221 acres      VOLUME: 5,709 MBF

Timber Sale Legal Description

Subsection	Section	Township	Range
Pts Gov Lots 1, 2, 5, Pts SWNE	01	T55N	R05W
Pts S2NE, Pts NESW, Pts N2SE, Pts SWSE	11	T55N	R05W
NWSW, Pts W2NW, Pts NESW, Pts SWSW	12	T55N	R05W
Gov Lots 2, 3, 4	36	T56N	R05W

Sale Name:

**Ridge Runner**

Estimated Auction: Fall 2024  
 Location: 5 miles northeast of Naples, ID  
 Drainages: Highland Creek  
 Class I Streams: No  
 Class II Streams: Yes  
 Silvicultural Prescription: Clearcut, Seedtree  
 Harvest System: Ground - Based

APPROXIMATE  
 ACREAGE: 86 acres      VOLUME: 1,595 MBF

Timber Sale Legal Description

Subsection	Section	Township	Range
Pts S2	20	T61N	R01W

Sale Name:

**Roman Beak Ton**

Estimated Auction: Summer 2024  
 Location: 7 miles west of Naples, ID  
 Drainages: Roman Nose Creek and Fall Creek  
 Class I Streams: Yes  
 Class II Streams: Yes  
 Silvicultural Prescription: Clearcut, Seedtree  
 Harvest System: Ground - Based

APPROXIMATE  
 ACREAGE: 267 acres      VOLUME: 4,500 MBF

Timber Sale Legal Description

Subsection	Section	Township	Range
Pts NW	25	T61N	R02W
Pts SE	26	T61N	R02W
NENE, Pts NWNE, Pts S2NE	35	T61N	R02W
Pts W2NW	36	T61N	R02W

**IDAHO DEPARTMENT OF LANDS FISCAL YEAR 2025 TIMBER SALE PLAN**

July 1, 2024 - June 30, 2025

**Pend Oreille Lake  
Supervisory Area**

Sale Name:

**Southern Leonia Cedar**

Estimated Auction: Spring 2025  
 Location: 2.5 miles northeast of Naples, ID  
 Drainages: Twentymile Creek  
 Class I Streams: Yes  
 Class II Streams: Yes  
 Silvicultural Prescription: Clearcut, Overstory Removal, Seedtree  
 Harvest System: Cable Yarding, Prescriptive Yarding, Tractor Skidding

APPROXIMATE  
 ACREAGE: 223 acres      VOLUME: 4,335 MBF  
 2,690 Poles

Timber Sale Legal Description

Subsection	Section	Township	Range
Pts N2SW, Pts SWSW, Pts NWSE, Pts S2SE, SESW	02	T60N	R01E
Gov Lots 1, 2, 3, 4, Pts NESW, Pts S2SW, Pts NWSE, Pts S2SE, S2NE, S2NW, NWSW, NESE	04	T60N	R01E
Pts N2NE	11	T60N	R01E

Sale Name:

**Steep and Cheep**

Estimated Auction: Spring 2025  
 Location: 4 miles southwest of Naples, ID  
 Drainages: Dodge Creek  
 Class I Streams: No  
 Class II Streams: Yes  
 Silvicultural Prescription: Overstory Removal  
 Harvest System: Ground - Based

APPROXIMATE  
 ACREAGE: 329 acres      VOLUME: 2,500 MBF

Timber Sale Legal Description

Subsection	Section	Township	Range
Pts S2SE	08	T60N	R01W
Pts SWSW	09	T60N	R01W
Pts NW, Pts N2SW, Pts SWSW	16	T60N	R01W
Pts N2NE, Pts SWNE, Pts SESW, Pts NESE, Pts S2SE, SENE, NWSE	17	T60N	R01W

Sale Name:

**The Last Sand Cedar**

Estimated Auction: Summer 2024  
 Location: 4 miles east of Elmira, ID  
 Drainages: Sand Lake  
 Class I Streams: No  
 Class II Streams: Yes  
 Silvicultural Prescription: Overstory Removal  
 Harvest System: Prescriptive Yarding, Tractor Skidding

APPROXIMATE  
 ACREAGE: 160 acres      VOLUME: 1,560 MBF  
 200 Poles

Timber Sale Legal Description

Subsection	Section	Township	Range
Pts Gov Lots 1, 2, 3, N2SE, Pts S2NE, Pts SENW, Pts E2SW, Pts SWSE	06	T59N	R01E

**IDAHO DEPARTMENT OF LANDS FISCAL YEAR 2025 TIMBER SALE PLAN**

July 1, 2024 - June 30, 2025

**Pend Oreille Lake  
Supervisory Area**

Sale Name:

**Worn Leather Cedar**

Estimated Auction: Fall 2024

Location: 11 miles northeast of Priest River, ID

Drainages: Big Creek

Class I Streams: No

Class II Streams: Yes

Silvicultural Prescription: Clearcut

Harvest System: Prescriptive Yarding

APPROXIMATE

ACREAGE:  
93 acres

VOLUME:  
3,500 MBF  
400 Poles

Timber Sale Legal Description

Subsection	Section	Township	Range
Pts E2SW, Pts SE	02	T57N	R04W

**Supervisory Area Totals: Pend Oreille Lake**

Supervisory Area Acres: 1,934 acres  
 Supervisory Area Total Sawlog: 36,671 MBF  
 Supervisory Area Total Cedar Poles: 3,990 Cedar Poles

IDAHO DEPARTMENT OF LANDS

**IDAHO DEPARTMENT OF LANDS FISCAL YEAR 2025 TIMBER SALE PLAN**

July 1, 2024 - June 30, 2025

**Mica  
Supervisory Area**

Sale Name:

**Big Creek**

Estimated Auction: Fall 2024  
 Location: 1 mile East Wallace  
 Drainages: SF CDA River  
 Class I Streams: Yes  
 Class II Streams: Yes  
 Silvicultural Prescription: Clearcut  
 Harvest System: Cable Yarding, Cable Yarding (Extraordinary), Ground - Based, Prescriptive Yarding

APPROXIMATE  
 ACREAGE: 117 acres      VOLUME: 1,735 MBF

Timber Sale Legal Description

Subsection	Section	Township	Range
Pts.	16	48N	03E
Pts.	36	48N	04E

Sale Name:

**BM Cedar**

Estimated Auction: Spring 2025  
 Location: 8 miles W Spirit Lake  
 Drainages: Brickel Creek  
 Class I Streams: Yes  
 Class II Streams: Yes  
 Silvicultural Prescription: Clearcut, Shelterwood  
 Harvest System:

APPROXIMATE  
 ACREAGE: 266 acres      VOLUME: 4,030 MBF  
 800 Poles

Timber Sale Legal Description

Subsection	Section	Township	Range
Pts Gov Lots 4, Pts SESW, Pts SWSE	24	053N	006W
Pts Gov Lots 1, 2, 3, NENW, Pts NE, Pts SENW, Pts NESW, Pts N2SE, Pts SESE	25	053N	006W

Sale Name:

**Lower Eagle Cedar**

Estimated Auction: Spring 2025  
 Location: 5 Miles S Rose Lake  
 Drainages: Robinson Creek  
 Class I Streams: Yes  
 Class II Streams: Yes  
 Silvicultural Prescription: Clearcut, Overstory Removal  
 Harvest System: Ground - Based, Prescriptive Yarding

APPROXIMATE  
 ACREAGE: 549 acres      VOLUME: 7,570 MBF  
 800 Poles

Timber Sale Legal Description

Subsection	Section	Township	Range
Pts. Gov Lot 3 & 4, Pts. SWNW	5	47N	01W
Pts. Gov Lots 1-3, Pts. S2NE, Pts. SENW	6	47N	01W
Gov Lot 1, SESW	30	48N	01W
Gov Lot 1-3, Pts Gov Lot 4 & 5, Pts N2NE, NENW	31	48N	01W
Pts Gov Lot 4	32	48N	01W
Pts NENE	36	48N	02W

**IDAHO DEPARTMENT OF LANDS FISCAL YEAR 2025 TIMBER SALE PLAN**

July 1, 2024 - June 30, 2025

**Mica  
Supervisory Area**

Sale Name:

**Westwood**

Estimated Auction: Winter 2024  
 Location: 1.5 Miles north of Rathdrum, Idaho  
 Drainages: Spring Branch Creek  
 Class I Streams: Yes  
 Class II Streams: Yes  
 Silvicultural Prescription: Clearcut, Overstory Removal  
 Harvest System: Ground - Based, Prescriptive Yarding

APPROXIMATE  
 ACREAGE: 237 acres      VOLUME: 4,660 MBF

Timber Sale Legal Description

Subsection	Section	Township	Range
Pts Gov Lots 2, Pts NWNE, Pts S2NE, Pts NENW, SENW, W2SE	24	052N	005W

**Supervisory Area Totals: Mica**

Supervisory Area Acres: 1,169 acres  
 Supervisory Area Total Sawlog: 17,995 MBF  
 Supervisory Area Total Cedar Poles: 1,600 Cedar Poles

IDAHO DEPARTMENT OF LANDS

**Mica - Other Agency**

Sale Name:

**Scott Field East**

Estimated Auction: Fall 2024  
 Location: 1 SW Bayview  
 Drainages: Pend Oreille Lake  
 Class I Streams: No  
 Class II Streams: No  
 Silvicultural Prescription: Shelterwood  
 Harvest System: Ground - Based

APPROXIMATE  
 ACREAGE: 48 acres      VOLUME: 500 MBF

Timber Sale Legal Description

Subsection	Section	Township	Range
Pts. W2SW	4	53N	02W
Pts. SENE, Pts. N2SE, Pts. SESE	5	53N	02W
Pts. N2NE, Pts. SENE	8	53N	02W



**IDAHO DEPARTMENT OF LANDS FISCAL YEAR 2025 TIMBER SALE PLAN**

July 1, 2024 - June 30, 2025

**St. Joe  
Supervisory Area**

Sale Name:

**Chunker**

Estimated Auction: Spring 2025  
 Location: 4 miles SW of St. Maries, Idaho  
 Drainages: St. Maries River  
 Class I Streams: Yes  
 Class II Streams: Yes  
 Silvicultural Prescription: Clearcut  
 Harvest System: Cable Yarding, Ground - Based

APPROXIMATE  
 ACREAGE: 302 acres      VOLUME: 7,145 MBF

Timber Sale Legal Description

Subsection	Section	Township	Range
Pts. NE, Pts. S2NW, Pts. N2SW, Pts. N2SE	36	T45N	R2W
Pts. GL 1, Pts. N2NE, Pts. SWSW	8	T45N	R2W
Pts. S2SW	36	T46N	R2W

Sale Name:

**Deer Haven**

Estimated Auction: Summer 2024  
 Location: 2 miles NE of Santa, Idaho  
 Drainages: Davis Creek  
 Class I Streams: Yes  
 Class II Streams: Yes  
 Silvicultural Prescription: Seedtree, Shelterwood  
 Harvest System: Cable Yarding, Cable Yarding (Tethered), Ground - Based, Shovel Logging

APPROXIMATE  
 ACREAGE: 275 acres      VOLUME: 7,961 MBF

Timber Sale Legal Description

Subsection	Section	Township	Range
Pts. NE, Pts. SW, Pts. E2NW, Pts. SWNW, Pts. W2SE	12	T44N	R1W

Sale Name:

**Flemming Mica Salvage**

Estimated Auction: Winter 2025  
 Location: 13 miles S & E of Calder, Idaho  
 Drainages: Flemming Creek, Boulder Creek, Mica Creek  
 Class I Streams: Yes  
 Class II Streams: Yes  
 Silvicultural Prescription: Clearcut, Overstory Removal  
 Harvest System: Cable Yarding, Ground - Based

APPROXIMATE  
 ACREAGE: 182 acres      VOLUME: 1,420 MBF

Timber Sale Legal Description

Subsection	Section	Township	Range
Pts. W2SW	23	T45N	R2E
Pts. SW	28	T45N	R4E
Pts. SWNE, Pts. S2NW, Pts. SW, Pts. NWSE	36	T45N	R4E

**IDAHO DEPARTMENT OF LANDS FISCAL YEAR 2025 TIMBER SALE PLAN**

July 1, 2024 - June 30, 2025

**St. Joe  
Supervisory Area**

Sale Name:

**Leberite 40**

Estimated Auction: Fall 2024  
 Location: 19 miles E of Clarkia, Idaho  
 Drainages: Floodwood Creek, Cedar Creek  
 Class I Streams: Yes  
 Class II Streams: Yes  
 Silvicultural Prescription: Shelterwood  
 Harvest System: Cable Yarding, Ground - Based

APPROXIMATE  
 ACREAGE: 413 acres      VOLUME: 11,600 MBF

Timber Sale Legal Description

Subsection	Section	Township	Range
Pts. NENE, Pts. S2NE, Pts. S2	29	T42N	R5E
Pts. SE	30	T42N	R5E
Pts. SE	32	T42N	R5E

Sale Name:

**Mid Pierce**

Estimated Auction: Spring 2025  
 Location: 5 miles NE of Fernwood, Idaho  
 Drainages: Olson Creek  
 Class I Streams: Yes  
 Class II Streams: Yes  
 Silvicultural Prescription: Clearcut, Overstory Removal, Shelterwood  
 Harvest System: Cable Yarding, Ground - Based

APPROXIMATE  
 ACREAGE: 283 acres      VOLUME: 6,495 MBF

Timber Sale Legal Description

Subsection	Section	Township	Range
Pts. SESW, Pts. SWSE, Pts. SE	27	T44N	R1E
Pts. N2NE, Pts. SW, Pts. NE, Pts. NENW	34	T44N	R1E
Pts. NESW	35	T44N	R1E

**IDAHO DEPARTMENT OF LANDS FISCAL YEAR 2025 TIMBER SALE PLAN**

July 1, 2024 - June 30, 2025

**St. Joe  
Supervisory Area**

Sale Name:

**Not For Long**

Estimated Auction: Fall 2024  
 Location: 12 miles NE of Elk River, Idaho  
 Drainages: Robinson Creek, Long Creek  
 Class I Streams: Yes  
 Class II Streams: No  
 Silvicultural Prescription: Clearcut, Overstory Removal, Shelterwood  
 Harvest System: Cable Yarding, Ground - Based, Tractor Skidding

APPROXIMATE  
 ACREAGE: 519 acres      VOLUME: 10,300 MBF

Timber Sale Legal Description

Subsection	Section	Township	Range
Pts. NWSW, Pts. S2SW, Pts. SWSE	28	T41N	R4E
Pts. E2SE	29	T41N	R4E
Pts. GL 4, Pts. SESW, Pts. SWSE	30	T41N	R4E
Pts. GL 1 & 6, Pts. NE, Pts. E2NW, Pts. N2SE	31	T41N	R4E
Pts. GL 1, Pts. NENE, Pts. NWNW, Pts. S2NW, Pts. N2SW	32	T41N	R4E
Pts. GL 2,3,4, Pts. W2NE, Pts. N2NW, Pts. SENW, Pts. N2SW, Pts. NWSE	33	T41N	R4E

Sale Name:

**Phone Home**

Estimated Auction: Winter 2025  
 Location: 4 miles S of Clarkia, Idaho  
 Drainages: Mann Creek, Stony Creek  
 Class I Streams: Yes  
 Class II Streams: Yes  
 Silvicultural Prescription: Clearcut, Seedtree  
 Harvest System: Cable Yarding

APPROXIMATE  
 ACREAGE: 149 acres      VOLUME: 4,690 MBF

Timber Sale Legal Description

Subsection	Section	Township	Range
Pts. NENW, Pts. NWNW, Pts. SENW, Pts. SWNW, Pts. NESW, Pts. N2SE, Pts. SENE	36	T42N	R2E

Sale Name:

**Pizza Delivered Products**

Estimated Auction: Fall 2024  
 Location: 5 miles S of St. Maries, Idaho  
 Drainages: Syringa Creek  
 Class I Streams: Yes  
 Class II Streams: Yes  
 Silvicultural Prescription: Clearcut  
 Harvest System: Ground - Based

APPROXIMATE  
 ACREAGE: 82 acres      VOLUME: 1,950 MBF

Timber Sale Legal Description

Subsection	Section	Township	Range
Pts. NE, Pts. N2SE	12	T45N	R2W

**IDAHO DEPARTMENT OF LANDS FISCAL YEAR 2025 TIMBER SALE PLAN**

July 1, 2024 - June 30, 2025

**St. Joe  
Supervisory Area**

Sale Name:

**Rising Sun Cedar**

Estimated Auction: Spring 2025  
 Location: 4 miles SW of Fernwood, ID  
 Drainages: Little Carpenter Creek  
 Class I Streams: No  
 Class II Streams: Yes  
 Silvicultural Prescription: Clearcut  
 Harvest System: Cable Yarding, Ground - Based, Shovel Logging

APPROXIMATE  
 ACREAGE: 71 acres      VOLUME: 2,390 MBF  
 1,065 Poles

Timber Sale Legal Description

Subsection	Section	Township	Range
Pts. NWNE, Pts. NW	15	T43N	R1W

Sale Name:

**Rogue One**

Estimated Auction: Spring 2025  
 Location: 4 miles SW of Emida, Idaho  
 Drainages: Santa Creek  
 Class I Streams: No  
 Class II Streams: Yes  
 Silvicultural Prescription: Clearcut  
 Harvest System: Ground - Based

APPROXIMATE  
 ACREAGE: 95 acres      VOLUME: 2,825 MBF

Timber Sale Legal Description

Subsection	Section	Township	Range
Pts N2NE	11	T43N	R3W
Pts. NESE, Pts. S2SE	2	T43N	R3W

Sale Name:

**Sly Meadows Ton**

Estimated Auction: Fall 2024  
 Location: 10 miles SE of St. Maries, ID  
 Drainages: Canyon Creek  
 Class I Streams: No  
 Class II Streams: Yes  
 Silvicultural Prescription: Clearcut  
 Harvest System: Ground - Based

APPROXIMATE  
 ACREAGE: 191 acres      VOLUME: 2,050 MBF

Timber Sale Legal Description

Subsection	Section	Township	Range
Pts. N2NE, Pts. SWNE, Pts. NW, Pts. SESW, Pts. SE	36	T46N	R1W

**IDAHO DEPARTMENT OF LANDS FISCAL YEAR 2025 TIMBER SALE PLAN**

July 1, 2024 - June 30, 2025

**St. Joe  
Supervisory Area**

Sale Name:

**Spiked Out**

Estimated Auction: Fall 2024  
 Location: 19 miles ESE of Clarkia, Idaho  
 Drainages: Meadow Creek  
 Class I Streams: Yes  
 Class II Streams: Yes  
 Silvicultural Prescription: Clearcut, Seedtree  
 Harvest System: Ground - Based

APPROXIMATE  
 ACREAGE: 572 acres      VOLUME: 11,055 MBF

Timber Sale Legal Description

Subsection	Section	Township	Range
Pts. SESE	1	T41N	R4E
Pts. SENE	12	T41N	R4E
Pts. SW	4	T41N	R5E
Pts. W2SW, Pts. SESW, Pts. SWSE	5	T41N	R5E
Pts. GL 2, Pts. GL 6-7, Pts. SWNE, Pts. E2SW, Pts. W2SE	6	T41N	R5E
Pts. GL 1-3, Pts. NWNE, Pts. E2NW, Pts. NESW	7	T41N	R5E
Pts. NE, Pts. NENW	8	T41N	R5E

Sale Name:

**Stick It**

Estimated Auction: Summer 2024  
 Location: 6 miles SW of Fernwood, Idaho  
 Drainages: Tyson Creek, Little Carpenter Creek, Emerald Creek, St. Maries River  
 Class I Streams: Yes  
 Class II Streams: Yes  
 Silvicultural Prescription: Clearcut, Commercial Thin, ROW, Seedtree, Shelterwood, Single Tree Select  
 Harvest System: Ground - Based, Ground - Based (Tethered), Shovel Logging

APPROXIMATE  
 ACREAGE: 486 acres      VOLUME: 7,325 MBF

Timber Sale Legal Description

Subsection	Section	Township	Range
Pts. SW, Pts. S2SE	16	T43N	R1E
Pts. SESE	36	T43N	R1W
Pts. N2NW, Pts. SWNW, Pts. NWSW	4	T43N	R1W
Pts. S2NE	5	T43N	R1W
Pts. NENW, Pts. S2NW, Pts. N2SW, Pts. SESW, Pts. SE	16	T44N	R1W
Pts. N2NE, Pts. N2NW	21	T44N	R1W
Pts. W2NW	36	T44N	R1W

**IDAHO DEPARTMENT OF LANDS FISCAL YEAR 2025 TIMBER SALE PLAN**

July 1, 2024 - June 30, 2025

**St. Joe  
Supervisory Area**

Sale Name:

**Thompson Turkey**

Estimated Auction: Fall 2024

Location: 4 miles NE of Harrison, Idaho

Drainages: Thompson Lake

Class I Streams: Yes

Class II Streams: Yes

Silvicultural Prescription: Clearcut, Overstory Removal, ROW

Harvest System: Cable Yarding, Ground - Based

APPROXIMATE

ACREAGE:  
213 acres

VOLUME:  
3,605 MBF

Timber Sale Legal Description

Subsection	Section	Township	Range
Pts. GL 1, Pts. GL 3-5, Pts. NWNE, Pts. NENW, Pts. NESW, Pts. SW	16	T48N	R3W

**Supervisory Area Totals: St. Joe**

Supervisory Area Acres: 3,833 acres

Supervisory Area Total Sawlog: 80,811 MBF

Supervisory Area Total Cedar Poles: 1,065 Cedar Poles

IDAHO DEPARTMENT OF LANDS

**IDAHO DEPARTMENT OF LANDS FISCAL YEAR 2025 TIMBER SALE PLAN**

July 1, 2024 - June 30, 2025

**Clearwater  
Supervisory Area**

Sale Name:

**Anchor Cedar**

Estimated Auction: Winter 2025  
 Location: 13 miles northwest of Headquarters, ID  
 Drainages: Benton Creek  
 Class I Streams: No  
 Class II Streams: Yes  
 Silvicultural Prescription: Overstory Removal  
 Harvest System: Cable Yarding, Ground - Based

APPROXIMATE  
 ACREAGE: 100 acres      VOLUME: 3,815 MBF  
 0 Poles

Timber Sale Legal Description

Subsection	Section	Township	Range
NENE, Pts SENE, Pts NESE	20	040N	005E
SWNW	27	040N	005E
NWNE, S2NE, Pts NW	28	040N	005E
NENE, SENW	29	040N	005E

Sale Name:

**Back Again**

Estimated Auction: Fall 2024  
 Location: 10 miles west to Orofino, Idaho  
 Drainages: Orofino Creek  
 Class I Streams: No  
 Class II Streams: Yes  
 Silvicultural Prescription: Seedtree  
 Harvest System: Tractor Skidding

APPROXIMATE  
 ACREAGE: 129 acres      VOLUME: 2,815 MBF

Timber Sale Legal Description

Subsection	Section	Township	Range
Pts NWNE, Pts S2NE, Pts NW, Pts SW, Pts NESE	36	037N	003E



**IDAHO DEPARTMENT OF LANDS FISCAL YEAR 2025 TIMBER SALE PLAN**

July 1, 2024 - June 30, 2025

**Clearwater  
Supervisory Area**

Sale Name:

**Big Creek OSR**

Estimated Auction: Spring 2025  
 Location: 7 miles northwest of Headquarters, ID  
 Drainages: Big Creek, Caldwell Creek, Dworshak Reservoir - North Fork Clearwater River  
 Class I Streams: Yes  
 Class II Streams: Yes  
 Silvicultural Prescription: Overstory Removal  
 Harvest System: Prescriptive Yarding

APPROXIMATE  
 ACREAGE: 1,237 acres      VOLUME: 10,405 MBF

Timber Sale Legal Description

Subsection	Section	Township	Range
Pts. NE, Pts. E2NW, Pts. NESW, Pts. NWSE	10	38N	4E
Pts. SWSW	16	38N	4E
Pts. W2NE, Pts. NW, Pts. SESW, Pts. S2SE	17	38N	4E
Pts. NWNW, Pts. NENENW	18	38N	4E
Pts. Gvt. L3-4, Pts. S2NW, Pts. SW	2	38N	4E
Pts. N2NE	20	38N	4E
Pts. NWNW	21	38N	4E
Pts. S2NE, Pts. E2SW, Pts. SE	3	38N	4E
Pts. SW, Pts. SWSE	4	38N	4E
Pts. E2SE, Pts. NENWSE, Pts. S2NWSE, Pts. NESWSE	5	38N	4E
Pts. SESESW, Pts. SWSWSE	7	38N	4E
Pts. S2SW, Pts. SWSE	8	38N	4E
Pts. NE, Pts. N2NW, Pts. SENW	9	38N	4E
Pts. S2NE, Pts. SESW, Pts. SE	35	39N	4E

Sale Name:

**Cedar Cabin**

Estimated Auction: Fall 2024  
 Location: 8 miles south of Elk River, Idaho  
 Drainages: Cedar Creek  
 Class I Streams: No  
 Class II Streams: Yes  
 Silvicultural Prescription: Overstory Removal  
 Harvest System: Ground - Based, Prescriptive Yarding

APPROXIMATE  
 ACREAGE: 193 acres      VOLUME: 840 MBF  
 0 Poles

Timber Sale Legal Description

Subsection	Section	Township	Range
Pts SWNW, Pts NWSW	01	038N	002E
Pts Gov Lots 1, 2, Pts S2NE, Pts S2NW, Pts NESW, Pts N2SE	02	038N	002E

**IDAHO DEPARTMENT OF LANDS FISCAL YEAR 2025 TIMBER SALE PLAN**

July 1, 2024 - June 30, 2025

**Clearwater  
Supervisory Area**

Sale Name:

**Deer Divide Cedar**

Estimated Auction: Fall 2024  
 Location: 5 Miles NE of Orofino Idaho  
 Drainages: Cedar Cr.  
 Class I Streams: No  
 Class II Streams: Yes  
 Silvicultural Prescription: Clearcut, ROW, Seedtree  
 Harvest System: Cable Yarding, Tractor Skidding

APPROXIMATE  
 ACREAGE: 297 acres      VOLUME: 8,290 MBF  
 2,000 Poles

Timber Sale Legal Description

Subsection	Section	Township	Range
Pts. Lot 2, Pts. Lot 3, Pts. Lot 4	5	36N	3E
Pts. NENE, Pts. S2NE, Pts. N2SE, Pts. SESE	31	37N	3E
Pts. W2NE, Pts. NW, Pts. SW	32	37N	3E

Sale Name:

**Huck Seed Cedar**

Estimated Auction: Winter 2025  
 Location: 4 Miles NE of Orofino Idaho  
 Drainages: Deer Cr.  
 Class I Streams: No  
 Class II Streams: Yes  
 Silvicultural Prescription: Clearcut, Overstory Removal  
 Harvest System: Cable Yarding, Tractor Skidding

APPROXIMATE  
 ACREAGE: 288 acres      VOLUME: 3,045 MBF  
 0 Poles

Timber Sale Legal Description

Subsection	Section	Township	Range
Pts Gov Lots 4, Pts SWNE, Pts S2NW, Pts N2SW, Pts N2SE	05	036N	003E
Pts Gov Lots 1, 2, 3, 4, 5, 6, 7, Pts S2NE, Pts SENW, Pts E2SW, Pts NESE	06	036N	003E

**IDAHO DEPARTMENT OF LANDS FISCAL YEAR 2025 TIMBER SALE PLAN**

July 1, 2024 - June 30, 2025

**Clearwater  
Supervisory Area**

Sale Name:

**Johnson Road**

Estimated Auction: Summer 2024  
 Location: 11 Miles northeast of Orofino, Idaho  
 Drainages: Whiskey Cr. and Mckinnon Cr.  
 Class I Streams: Yes  
 Class II Streams: Yes  
 Silvicultural Prescription: Overstory Removal, Seedtree  
 Harvest System: Cable Yarding, Tractor Skidding

APPROXIMATE  
 ACREAGE: 435 acres      VOLUME: 6,325 MBF

Timber Sale Legal Description

Subsection	Section	Township	Range
Pts.NWNW	16	37N	3E
Pts. NE	17	37N	3E
Pts. Lot 3, Pts. Lot 4, Pts. S2NW, Pts. N2SW	3	37N	3E
Pts. Lot 1, Pts. Lot 2, Pts. S2NE, Pts. NESE	4	37N	3E
Pts. SE	8	37N	3E
Pts. SW, Pts. W2SE	9	37N	3E

Sale Name:

**Last Loseth**

Estimated Auction: Spring 2025  
 Location: 9 miles North of Orofino, Idaho  
 Drainages: Unnamed tributaries to Dworshak Reservoir  
 Class I Streams: No  
 Class II Streams: Yes  
 Silvicultural Prescription: Clearcut, Seedtree  
 Harvest System: Cable Yarding, Prescriptive Yarding, Tractor Skidding

APPROXIMATE  
 ACREAGE: 230 acres      VOLUME: 5,670 MBF

Timber Sale Legal Description

Subsection	Section	Township	Range
Pts N2SW, SWSW, Pts SESW, Pts SWSE	29	038N	002E
Pts NENW, SWNW, Pts SENW, Pts N2SW	32	038N	002E

**IDAHO DEPARTMENT OF LANDS FISCAL YEAR 2025 TIMBER SALE PLAN**

July 1, 2024 - June 30, 2025

**Clearwater  
Supervisory Area**

Sale Name:

**Lower Benton Cedar**

Estimated Auction: Spring 2025  
 Location: 13 miles north of Headquarters, ID  
 Drainages: Benton Creek  
 Class I Streams: Yes  
 Class II Streams: Yes  
 Silvicultural Prescription: Overstory Removal  
 Harvest System: Cable Yarding

APPROXIMATE  
 ACREAGE: 147 acres      VOLUME: 3,355 MBF  
 0 Poles

Timber Sale Legal Description

Subsection	Section	Township	Range
Pts E2SE	08	040N	005E
Pts. SWNE, Pts. S2NW, Pts. SW, Pts. N2SE, Pts. SWSE	09	040N	005E

Sale Name:

**Nelson Cranberry Cedar**

Estimated Auction: Summer 2024  
 Location: 12 miles North of Orofino, Idaho  
 Drainages: Cranberry Creek  
 Class I Streams: Yes  
 Class II Streams: Yes  
 Silvicultural Prescription: Single Tree Select  
 Harvest System: Ground - Based, Helicopter

APPROXIMATE  
 ACREAGE: 287 acres      VOLUME: 1,600 MBF  
 2,325 Poles

Timber Sale Legal Description

Subsection	Section	Township	Range
Pts SW, Pts NWSE	03	038N	002E
Pts SESE	04	038N	002E
Pts E2NE	09	038N	002E
Pts N2NW, Pts SWNW	10	038N	002E
Pts SWNE, Pts SENW, Pts NESW, Pts N2SE, N2SWSE, SESE	13	038N	002E

**IDAHO DEPARTMENT OF LANDS FISCAL YEAR 2025 TIMBER SALE PLAN**

July 1, 2024 - June 30, 2025

**Clearwater  
Supervisory Area**

Sale Name:

**Point Cedar OSR**

Estimated Auction: Summer 2024  
 Location: 16.5 Miles east from Orofino  
 Drainages: Winter Creek  
 Class I Streams: No  
 Class II Streams: Yes  
 Silvicultural Prescription: Overstory Removal  
 Harvest System: Prescriptive Yarding, Tractor Skidding

APPROXIMATE  
 ACREAGE: 677 acres      VOLUME: 3,145 MBF  
 0 Poles

Timber Sale Legal Description

Subsection	Section	Township	Range
Pts NWSW, Pts S2SW, PtsS2SE	11	036N	004E
Pts N2NE, Pts NENW, Pts S2SW, Pts W2SE	12	036N	004E
Pts W2NE, Pts SENE, Pts NW, Pts NESW, Pts NWSE	13	036N	004E
Pts N2, Pts SW, Pts NWSE	14	036N	004E

Sale Name:

**Rainy Slopes II OSR**

Estimated Auction: Winter 2025  
 Location: 12 miles ENE from Orofino  
 Drainages: Rainy Creek and Cedar Creek  
 Class I Streams: No  
 Class II Streams: Yes  
 Silvicultural Prescription: Clearcut, Overstory Removal  
 Harvest System: Prescriptive Yarding, Tractor Skidding

APPROXIMATE  
 ACREAGE: 297 acres      VOLUME: 1,275 MBF

Timber Sale Legal Description

Subsection	Section	Township	Range
Pts SWNE, Pts NENW, Pts S2NW, Pts N2SW, Pts SWSW, Pts NWSE	16	37N	4E
Pts. NESE, Pts. SENE	17	37N	4E
Pts. N2SE, Pts. NESW	19	37N	4E
Pts. S2NW, Pts. N2SW	20	37N	4E

**IDAHO DEPARTMENT OF LANDS FISCAL YEAR 2025 TIMBER SALE PLAN**

July 1, 2024 - June 30, 2025

**Clearwater  
Supervisory Area**

Sale Name:

**Whiskey Pieces**

Estimated Auction: Fall 2024  
 Location: 12 mi NE from Orofino  
 Drainages: Whiskey Cr.  
 Class I Streams: Yes  
 Class II Streams: Yes  
 Silvicultural Prescription: Overstory Removal, Seedtree  
 Harvest System: Cable Yarding, Tractor Skidding

APPROXIMATE  
 ACREAGE: 205 acres      VOLUME: 3,370 MBF

Timber Sale Legal Description

Subsection	Section	Township	Range
Pts. Lot 3, Pts. Lot 4 Pts. S2NW	5	37N	4E
Pts. Lot 1, Pts. S2NE	6	37N	4E
Pts. S2SW, Pts. SWSE	32	38N	4E

Sale Name:

**White Doe Cedar**

Estimated Auction: Fall 2024  
 Location: 14 mi NE from Orofino  
 Drainages: White Creek/Doe Creek  
 Class I Streams: No  
 Class II Streams: Yes  
 Silvicultural Prescription: Overstory Removal  
 Harvest System: Cable Yarding, Tractor Skidding

APPROXIMATE  
 ACREAGE: 240 acres      VOLUME: 1,050 MBF  
 0 Poles

Timber Sale Legal Description

Subsection	Section	Township	Range
Pts SE, Pts NESW, Pts S2SW	25	038N	003E
Pts N2NE, Pts NW	36	038N	003E

**Supervisory Area Totals: Clearwater**

Supervisory Area Acres: 4,762 acres  
 Supervisory Area Total Sawlog: 55,000 MBF  
 Supervisory Area Total Cedar Poles: 4,325 Cedar Poles

**IDAHO DEPARTMENT OF LANDS FISCAL YEAR 2025 TIMBER SALE PLAN**

July 1, 2024 - June 30, 2025

**Ponderosa  
Supervisory Area**

Sale Name:

**Burnt Rose**

Estimated Auction: Summer 2024  
 Location: 4 miles southeast of Elk River, ID  
 Drainages: Deep Creek, Burnt Creek  
 Class I Streams: Yes  
 Class II Streams: Yes  
 Silvicultural Prescription: Clearcut, Overstory Removal, ROW  
 Harvest System: Cable Yarding, Ground - Based, Prescriptive Yarding

APPROXIMATE  
 ACREAGE: 206 acres      VOLUME: 4,005 MBF

Timber Sale Legal Description

Subsection	Section	Township	Range
Pt E2SW; Pt W2SE	12	39N	02E
Pt S2NE; Pt S2NW; Pt N2SW; Pt N2SE	13	39N	02E

Sale Name:

**Holy Cole Cedar**

Estimated Auction: Fall 2024  
 Location: 12 miles northeast of Southwick, ID  
 Drainages: Cole Creek  
 Class I Streams: No  
 Class II Streams: Yes  
 Silvicultural Prescription: Clearcut, ROW  
 Harvest System: Cable Yarding, Ground - Based

APPROXIMATE  
 ACREAGE: 215 acres      VOLUME: 7,515 MBF  
 4,575 Poles

Timber Sale Legal Description

Subsection	Section	Township	Range
Gov Lot 4; Pt SWNW; Pt W2SW	5	38N	02E
Gov Lot 1; Pt SENE; Pt NESE	6	38N	02E
Pt SWNE; Pt NWSE	8	38N	02E
Pt SESW	32	39N	02E

Sale Name:

**Mashed Potato Cedar**

Estimated Auction: Winter 2025  
 Location: 3 miles northeast of Deary, ID  
 Drainages: Barn Creek, Corral Creek  
 Class I Streams: Yes  
 Class II Streams: Yes  
 Silvicultural Prescription: Clearcut, Overstory Removal, ROW  
 Harvest System: Cable Yarding, Ground - Based, Ground - Based (Tethered)

APPROXIMATE  
 ACREAGE: 254 acres      VOLUME: 7,915 MBF  
 1,850 Poles

Timber Sale Legal Description

Subsection	Section	Township	Range
Pt NWNE, Pt S2NE, Pt N2NW, Pt N2SE	10	40N	02W
Pt Govt Lots 1-2, Pt NENE, Pt SWNW, Pt NESW	11	40N	02W
Pt W2NE, Pt NW, Pt NESW, Pt N2SE	12	40N	02W



**IDAHO DEPARTMENT OF LANDS FISCAL YEAR 2025 TIMBER SALE PLAN**

July 1, 2024 - June 30, 2025

**Ponderosa  
Supervisory Area**

Sale Name:

**Moose Stew**

Estimated Auction: Spring 2025  
 Location: 2 miles west of Bovill, ID  
 Drainages: Moose Creek  
 Class I Streams: No  
 Class II Streams: Yes  
 Silvicultural Prescription: Clearcut, ROW  
 Harvest System: Shovel Logging

APPROXIMATE  
 ACREAGE: 145 acres      VOLUME: 4,715 MBF

Timber Sale Legal Description

Subsection	Section	Township	Range
Pt NENW, Pt S2NW, Pt SW, Pt E2SE	27	41N	01W
Pt NENW	34	41N	01W

Sale Name:

**Purdue High Cedar**

Estimated Auction: Spring 2025  
 Location: 2 miles north of Bovill, ID  
 Drainages: Purdue Creek  
 Class I Streams: Yes  
 Class II Streams: Yes  
 Silvicultural Prescription: Clearcut, ROW  
 Harvest System: Ground - Based, Prescriptive Yarding

APPROXIMATE  
 ACREAGE: 241 acres      VOLUME: 7,770 MBF  
 2,560 Poles

Timber Sale Legal Description

Subsection	Section	Township	Range
Pt Gov Lot 2-4, Pt SENW, Pt E2SW	19	41N	01E
Pt SW, Pt W2SE	20	41N	01E
Pt N2NE, Pt SWNE, Pt NW, Pt N2SW, Pt SESW, Pt NWSE	29	41N	01E
Pt SENE, Pt NESE	30	41N	01E

**IDAHO DEPARTMENT OF LANDS FISCAL YEAR 2025 TIMBER SALE PLAN**

July 1, 2024 - June 30, 2025

**Ponderosa  
Supervisory Area**

Sale Name:

**Trumbull**

Estimated Auction: Summer 2024

Location: 1 mile north of Elk River, ID

Drainages: Lindley Creek, West Fork Lindley Creek, East Fork Potlatch River

Class I Streams: Yes

Class II Streams: Yes

Silvicultural Prescription: Clearcut, ROW, Shelterwood

Harvest System: Cable Yarding (Extraordinary), Shovel Logging, Tractor Skidding

APPROXIMATE

ACREAGE:  
183 acres

VOLUME:  
8,445 MBF

Timber Sale Legal Description

Subsection	Section	Township	Range
Pt SWSE	7	40N	01E
Pt E2SW, Pt SE	22	40N	02E
Pt W2SW	23	40N	02E
Pt NENW	27	40N	02E

**Supervisory Area Total: Ponderosa**

Supervisory Area Acres: 1,244 acres

Supervisory Area Total Sawlog: 40,365 MBF

Supervisory Area Total Cedar Poles: 8,985 Cedar Poles

**IDAHO DEPARTMENT OF LANDS FISCAL YEAR 2025 TIMBER SALE PLAN**

July 1, 2024 - June 30, 2025

**Maggie Creek  
Supervisory Area**

Sale Name:

**Cool Hand Lew**

Estimated Auction: Winter 2025  
 Location: 4 miles NE of Weippe  
 Drainages: Burcham Creek  
 Class I Streams: Yes  
 Class II Streams: Yes  
 Silvicultural Prescription: Clearcut, Shelterwood  
 Harvest System: Ground - Based

APPROXIMATE  
 ACREAGE: 300 acres      VOLUME: 8,810 MBF

Timber Sale Legal Description

Subsection	Section	Township	Range
Pts. Govt. Lot 2	4	35N	5E
Pts. NENE	32	36N	5E
Pts. NE, Pts. N2NW, Pts. NESW, Pts. SE	33	36N	5E

Sale Name:

**Fangorn Forest Cedar**

Estimated Auction: Winter 2025  
 Location: 8 Miles SE of Weippe  
 Drainages: Pete & Charlie Creek  
 Class I Streams: No  
 Class II Streams: Yes  
 Silvicultural Prescription: Clearcut, Shelterwood  
 Harvest System: Ground - Based

APPROXIMATE  
 ACREAGE: 180 acres      VOLUME: 4,945 MBF  
 500 Poles

Timber Sale Legal Description

Subsection	Section	Township	Range
Pts SENW, Pts. SWNE, Pts NWSE, Pts NESW, Pts NWSE, Pts NESE, SESW, Pts SWSE	10	T 34 N	R 05 E
Pts NWNW, Pts NENW, Pts NWNE, Pts SWNW, Pts SENW	15	T 34 N	R 05 E

**IDAHO DEPARTMENT OF LANDS FISCAL YEAR 2025 TIMBER SALE PLAN**

July 1, 2024 - June 30, 2025

**Maggie Creek  
Supervisory Area**

Sale Name:

**Gotham Ridge Cedar**

Estimated Auction: Summer 2024  
 Location: East of Weippe  
 Drainages: Bat Creek  
 Class I Streams: Yes  
 Class II Streams: Unk  
 Silvicultural Prescription: Clearcut, Overstory Removal  
 Harvest System: Cable Yarding, Tractor Skidding

APPROXIMATE  
 ACREAGE: 386 acres      VOLUME: 6,185 MBF  
 0 Poles

Timber Sale Legal Description

Subsection	Section	Township	Range
Pts, SW2	27	35	5E
Pts, N2, SWNE, SENW, N2SW, SESW, NWSE, SE2	28	35	5E
Pts, NE2	33	35	5E
Pts, NW2, SENW	34	35	5E

Sale Name:

**Gulch Island Cedar**

Estimated Auction: Summer 2024  
 Location: 2 miles NE of Weippe  
 Drainages: Kamiah Gulch  
 Class I Streams: No  
 Class II Streams: Yes  
 Silvicultural Prescription: Shelterwood  
 Harvest System: Ground - Based

APPROXIMATE  
 ACREAGE: 102 acres      VOLUME: 1,465 MBF  
 0 Poles

Timber Sale Legal Description

Subsection	Section	Township	Range
SESE	1	35N	4E
NENE	12	35N	4E
Pts, L6, L7, SW2	6	35N	5E
Pts, L1, NENW	7	35N	5E

Sale Name:

**Mirkwood**

Estimated Auction: Spring 2025  
 Location: 5 Miles Southeast of Weippe, Idaho  
 Drainages: Fords Creek  
 Class I Streams: No  
 Class II Streams: Yes  
 Silvicultural Prescription: Clearcut, Shelterwood  
 Harvest System: Ground - Based

APPROXIMATE  
 ACREAGE: 205 acres      VOLUME: 4,800 MBF

Timber Sale Legal Description

Subsection	Section	Township	Range
Pts. N 1/2	5	T34N	R05E
Pts SESW	32	T35N	R05E

**IDAHO DEPARTMENT OF LANDS FISCAL YEAR 2025 TIMBER SALE PLAN**

July 1, 2024 - June 30, 2025

**Maggie Creek  
Supervisory Area**

Sale Name:

**North Loop**

Estimated Auction: Spring 2025  
 Location: 9 Miles NE Kooskia  
 Drainages: Maggie Creek  
 Class I Streams: No  
 Class II Streams: Yes  
 Silvicultural Prescription: Clearcut, Overstory Removal  
 Harvest System: Ground - Based

APPROXIMATE  
 ACREAGE: 352 acres      VOLUME: 3,475 MBF

Timber Sale Legal Description

Subsection	Section	Township	Range
Pts W2NW, Pts NWSW	10	33N	05E
Pts S2SE	11	33N	05E
Pts NE, Pts E2NW, Pts SW, Pts NWSE	14	33N	05E
Pts S2NE, Pts SESW, Pts SE	15	33N	05E
Pts NWNE, Pts NENW	22	33N	05E
Pts NWNW	23	33N	05E
Pts E2NE, Pts N2SE	9	33N	05E

Sale Name:

**Section 36 OSR**

Estimated Auction: Fall 2024  
 Location: 6 Miles Northeast of Kamiah  
 Drainages: Maggie Creek  
 Class I Streams: No  
 Class II Streams: Yes  
 Silvicultural Prescription: Overstory Removal  
 Harvest System: Ground - Based

APPROXIMATE  
 ACREAGE: 206 acres      VOLUME: 415 MBF

Timber Sale Legal Description

Subsection	Section	Township	Range
Pts E2, Pts. NESW	36	34N	04E

**Supervisory Area Totals: Maggie Creek**

Supervisory Area Acres: 1,731 acres  
 Supervisory Area Total Sawlog: 30,095 MBF  
 Supervisory Area Total Cedar Poles: 500 Cedar Poles

**IDAHO DEPARTMENT OF LANDS FISCAL YEAR 2025 TIMBER SALE PLAN**

July 1, 2024 - June 30, 2025

**Payette Lakes  
Supervisory Area**

Sale Name:

**Deep South Ton**

Estimated Auction: Winter 2025  
 Location: 8 Miles Northeast of Cascade, ID  
 Drainages: Deep Creek  
 Class I Streams: No  
 Class II Streams: Yes  
 Silvicultural Prescription: Clearcut, Seedtree  
 Harvest System: Ground - Based

APPROXIMATE  
 ACREAGE: 147 acres      VOLUME: 1,515 MBF

Timber Sale Legal Description

Subsection	Section	Township	Range
Pts. L1, Pts. L2, Pts. S2NE, Pts. SE	1	14N	04E
Pts. NENE	12	14N	04E
Pts. SWSE	36	15N	04E

Sale Name:

**Dog Shorts Ton**

Estimated Auction: Summer 2024  
 Location: 5 Miles Southeast of Riggins, ID  
 Drainages: Salmon River  
 Class I Streams: No  
 Class II Streams: Yes  
 Silvicultural Prescription: Overstory Removal  
 Harvest System: Cable Yarding

APPROXIMATE  
 ACREAGE: 432 acres      VOLUME: 3,200 MBF

Timber Sale Legal Description

Subsection	Section	Township	Range
Pts. NW, Pts. E2SW, Pts. SE	25	24N	01E
Pts. NE, Pts. NENW, Pts. NESE	36	24N	01E
Pts. L4	30	24N	02E
Pts. L1, L2, L3; Pts. E2NW	31	24N	02E

**IDAHO DEPARTMENT OF LANDS FISCAL YEAR 2025 TIMBER SALE PLAN**

July 1, 2024 - June 30, 2025

**Payette Lakes  
Supervisory Area**

Sale Name:

**Great Scott Ton**

Estimated Auction: Fall 2024  
 Location: 5 Miles Northeast of Cascade, ID  
 Drainages: Big Creek  
 Class I Streams: No  
 Class II Streams: Yes  
 Silvicultural Prescription: ROW, Seedtree  
 Harvest System: Ground - Based

APPROXIMATE  
 ACREAGE: 573 acres      VOLUME: 4,440 MBF

Timber Sale Legal Description

Subsection	Section	Township	Range
Pts. S2SW	11	14N	04E
Pts. W2, Pts. W2SE, Pts. SESE	14	14N	04E
Pts. SENE, Pts. SESE	15	14N	04E
Pts. E2NE	22	14N	04E
Pts. NE, Pts. W2, Pts. NWSE	23	14N	04E

Sale Name:

**Lakey Ton**

Estimated Auction: Winter 2025  
 Location: 9 Miles Northwest of Council, ID  
 Drainages: Lakey Creek  
 Class I Streams: No  
 Class II Streams: Yes  
 Silvicultural Prescription: Overstory Removal, ROW  
 Harvest System: Ground - Based, Prescriptive Yarding

APPROXIMATE  
 ACREAGE: 392 acres      VOLUME: 1,990 MBF

Timber Sale Legal Description

Subsection	Section	Township	Range
Pts. SESW, Pts. S2SE	20	17N	02W
Pts. S2NE, Pts. W2NW, Pts. SENW, Pts. N2SW, Pts. W2SE	28	17N	02W
Pts. E2, Pts. E2W2	29	17N	02W

**IDAHO DEPARTMENT OF LANDS FISCAL YEAR 2025 TIMBER SALE PLAN**

July 1, 2024 - June 30, 2025

**Payette Lakes Supervisory Area**

Sale Name:

**North Skern Ton**

Estimated Auction: Spring 2025  
 Location: 6 Miles West of New Meadows, ID  
 Drainages: Weiser  
 Class I Streams: No  
 Class II Streams: Yes  
 Silvicultural Prescription: Overstory Removal, Seedtree  
 Harvest System: Ground - Based

APPROXIMATE  
 ACREAGE: 279 acres      VOLUME: 3,515 MBF

Timber Sale Legal Description

Subsection	Section	Township	Range
SWSW	13	19N	01W
Pts. NE, Pts. E2NW, Pts. NESE	23	19N	01W
Pts. NW	24	19N	01W

Sale Name:

**Paddy Pond Ton**

Estimated Auction: Spring 2025  
 Location: 6 Miles Northeast of Donnelly, ID  
 Drainages: Paddy Creek  
 Class I Streams: No  
 Class II Streams: Yes  
 Silvicultural Prescription: Clearcut, ROW  
 Harvest System: Ground - Based, Prescriptive Yarding

APPROXIMATE  
 ACREAGE: 219 acres      VOLUME: 2,345 MBF

Timber Sale Legal Description

Subsection	Section	Township	Range
Pts. W2SW, Pts. SESW	28	17N	04E
Pts. SWNE, Pts. E2SW, Pts. W2SE	33	17N	04E
Pts. SW	34	17N	04E



**IDAHO DEPARTMENT OF LANDS FISCAL YEAR 2025 TIMBER SALE PLAN**

July 1, 2024 - June 30, 2025

**Payette Lakes  
Supervisory Area**

Sale Name:

**Round Ferry Ton**

Estimated Auction: Summer 2024  
 Location: 2 Miles Northeast of Smiths Ferry, ID  
 Drainages: N. Fork Payette River, Round Valley Creek  
 Class I Streams: No  
 Class II Streams: Yes  
 Silvicultural Prescription: Overstory Removal, ROW, Seedtree  
 Harvest System: Ground - Based

APPROXIMATE  
 ACREAGE: 453 acres      VOLUME: 4,420 MBF

Timber Sale Legal Description

Subsection	Section	Township	Range
Pts. Gov. Lots 1-4, Pts. SWNE, Pts. S2NW, Pts. SW, Pts. W2SE	1	11N	03E
Pts. NENE	11	11N	03E
Pts. NWNW	12	11N	03E
Pts. E2SE	2	11N	03E

**Supervisory Area Totals: Payette Lakes**

Supervisory Area Acres: 2,495 acres  
 Supervisory Area Total Sawlog: 21,425 MBF

**IDAHO DEPARTMENT OF LANDS FISCAL YEAR 2025 TIMBER SALE PLAN**

July 1, 2024 - June 30, 2025

**Southwest  
Supervisory Area**

Sale Name:

**Bannock Pine**

Estimated Auction: Spring 2025  
 Location: 2 miles NW of Idaho City, ID  
 Drainages: Pine Creek  
 Class I Streams: No  
 Class II Streams: Yes  
 Silvicultural Prescription: Clearcut, ROW, Single Tree Select  
 Harvest System: Ground - Based

APPROXIMATE  
 ACREAGE: 945 acres      VOLUME: 7,100 MBF

Timber Sale Legal Description

Subsection	Section	Township	Range
Pts Gov Lots 2, 3, 4, 6, 7, 8	01	005N	005E
Pts Gov Lots 1, 3, 4, 5, 6, 7, Pts SWNE, Pts SENW	02	005N	005E
Pts NW, Pts N2SW, Pts SWSW	12	005N	005E
Pts S2NE, Pts NW, Pts N2SW, Pts N2SE, Pts SESE	13	005N	005E
Pts SWSE	35	006N	005E
Pts Gov Lots 1, 2, Pts N2NE, Pts SWNE, Pts SENW, Pts NWSE, Pts S2SE, SENE, SWNW,	36	006N	005E

Sale Name:

**Upper Deer**

Estimated Auction: Fall 2024  
 Location: 4 miles SE of Banks, ID  
 Drainages: Deer Creek  
 Class I Streams: No  
 Class II Streams: Yes  
 Silvicultural Prescription: Clearcut, ROW, Seedtree, Single Tree Select  
 Harvest System: Ground - Based

APPROXIMATE  
 ACREAGE: 1,111 acres      VOLUME: 8,900 MBF

Timber Sale Legal Description

Subsection	Section	Township	Range
Pts SWNE, Pts SW, W2SE	01	008N	003E
E2SE, Pts NE, Pts SENW, Pts NESW, Pts W2SE	11	008N	003E
Pts N2NW, Pts SWNW, Pts W2SW, W2NE, SENW, E2SW, W2SE	12	008N	003E
E2NW, Pts NWNE, Pts W2NW	13	008N	003E
E2NE, Pts W2NE	14	008N	003E

**Supervisory Area Totals: Southwest**

Supervisory Area Acres: 2,056 acres  
 Supervisory Area Total Sawlog: 16,000 MBF

**IDAHO DEPARTMENT OF LANDS FISCAL YEAR 2025 TIMBER SALE PLAN**

July 1, 2024 - June 30, 2025

**Eastern Idaho  
Supervisory Area**

Sale Name:

**Thompson Creek Ton**

Estimated Auction: Spring 2025  
 Location: 30 Miles N of Soda Springs  
 Drainages: Thompson Creek  
 Class I Streams: Unk  
 Class II Streams: Unk  
 Silvicultural Prescription: Shelterwood  
 Harvest System: Ground - Based

APPROXIMATE  
 ACREAGE: 1,335 acres      VOLUME: 8,000 MBF

Timber Sale Legal Description

Subsection	Section	Township	Range
Pts N2NE, Pts SWNE, Pts NWNW, Pts S2NW, Pts SW, Pts S2SE, SENE, N2SE	20	006S	040E
Pts SWNE, Pts N2NW, Pts SENW, Pts N2SE, Pts SESE, SWNW, SW, SWSE	21	006S	040E
Pts SWSW	22	006S	040E
Pts NW, Pts E2SW, Pts W2SE, W2SW	27	006S	040E
NWNE, S2NE, E2NW, NESW, N2SE, Pts NENE, Pts W2NW, Pts NWSW, Pts S2SW, Pts S2SE	28	006S	040E
Pts N2NW	34	006S	040E

**Supervisory Area Totals: Eastern Idaho**

Supervisory Area Acres: 1,335 acres  
 Supervisory Area Total Sawlog: 8,000 MBF

**Statewide Totals**

Grand Total Acres: 25,378 acres  
 Grand Total Sawlog: 334,362 MBF  
 Grand Total Cedar Poles: 22,965 Cedar Poles