

Dustin T. Miller, Director

February 13, 2024

Idaho Department of Lands



IC Title 58, Chapter 1

Land Ownership

(Idaho Admission Act of 1889)

PUBLIC SCHOOLS (K-12) – 84.81%

Charitable Institutions – 3.11%

School of Science (U of I) – 3.04%

Normal School – 2.46%

University (U of I) – 2.21%

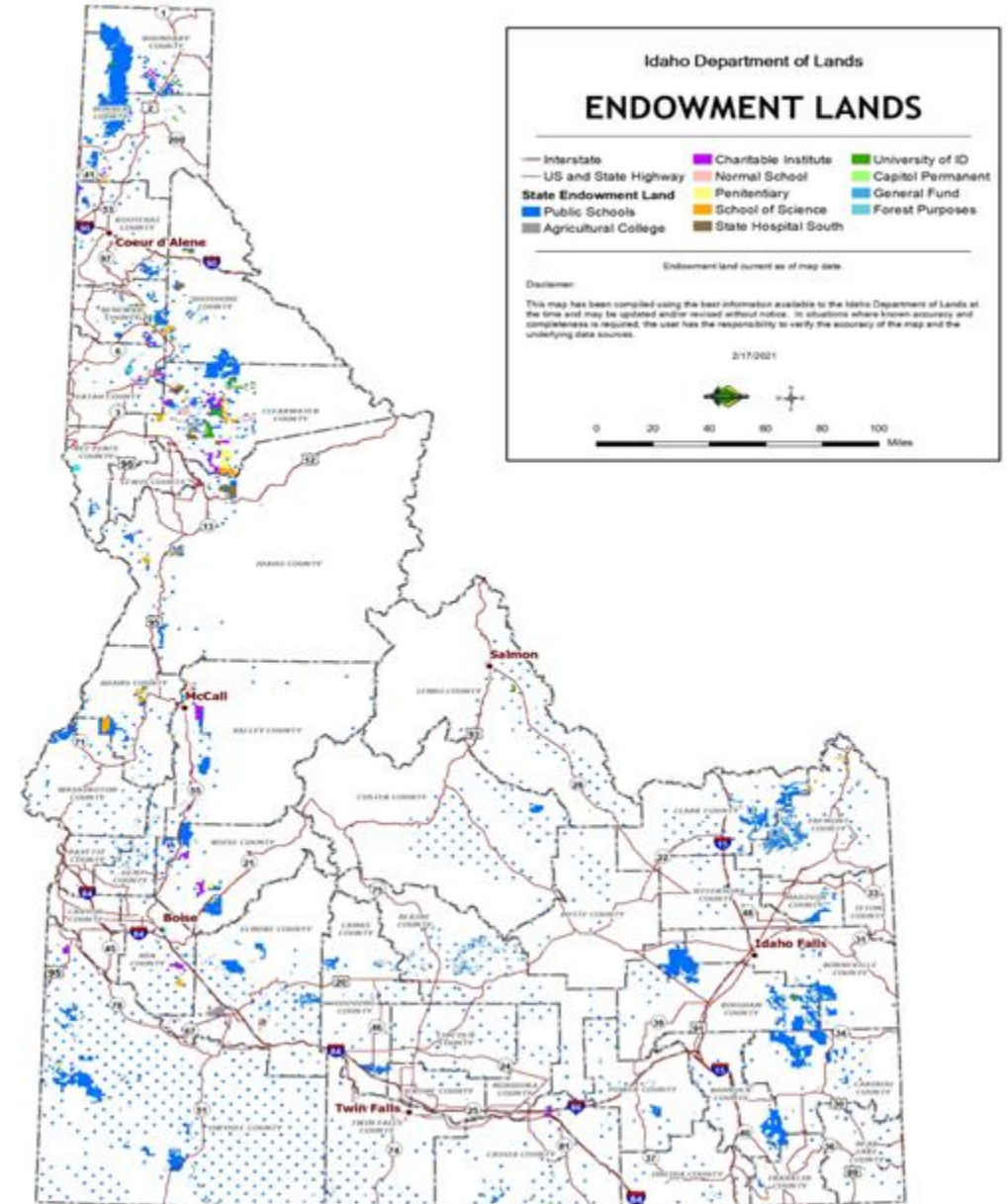
State Hospital South – 1.45%

Ag College – 1.35%

Penitentiary – 1.17%

Capitol Building – 0.05%

General Fund – 0.05%



Endowment Beneficiaries

Public School Endowment Fund

- K-12 Education

Agricultural College Fund

- University of Idaho

Charitable Institutions Fund

- Idaho State University
- State Juvenile Corrections Center
- State Hospital North
- Idaho State Veterans Homes
- Idaho School for the Deaf and Blind

Penitentiary Fund

- Idaho Department of Correction

School of Science Fund

- University of Idaho

State Hospital South Fund

- Psychiatric Inpatient Care

University of Idaho Fund

- Idaho's Land Grant University

Normal School Fund

- Idaho State University Department of Education
- Lewis-Clark State College

Capitol Permanent Fund

- Capitol building (major maintenance)

Idaho Admission Act

State Board of Land Commissioners

Idaho Const. art IX, §7 and §8

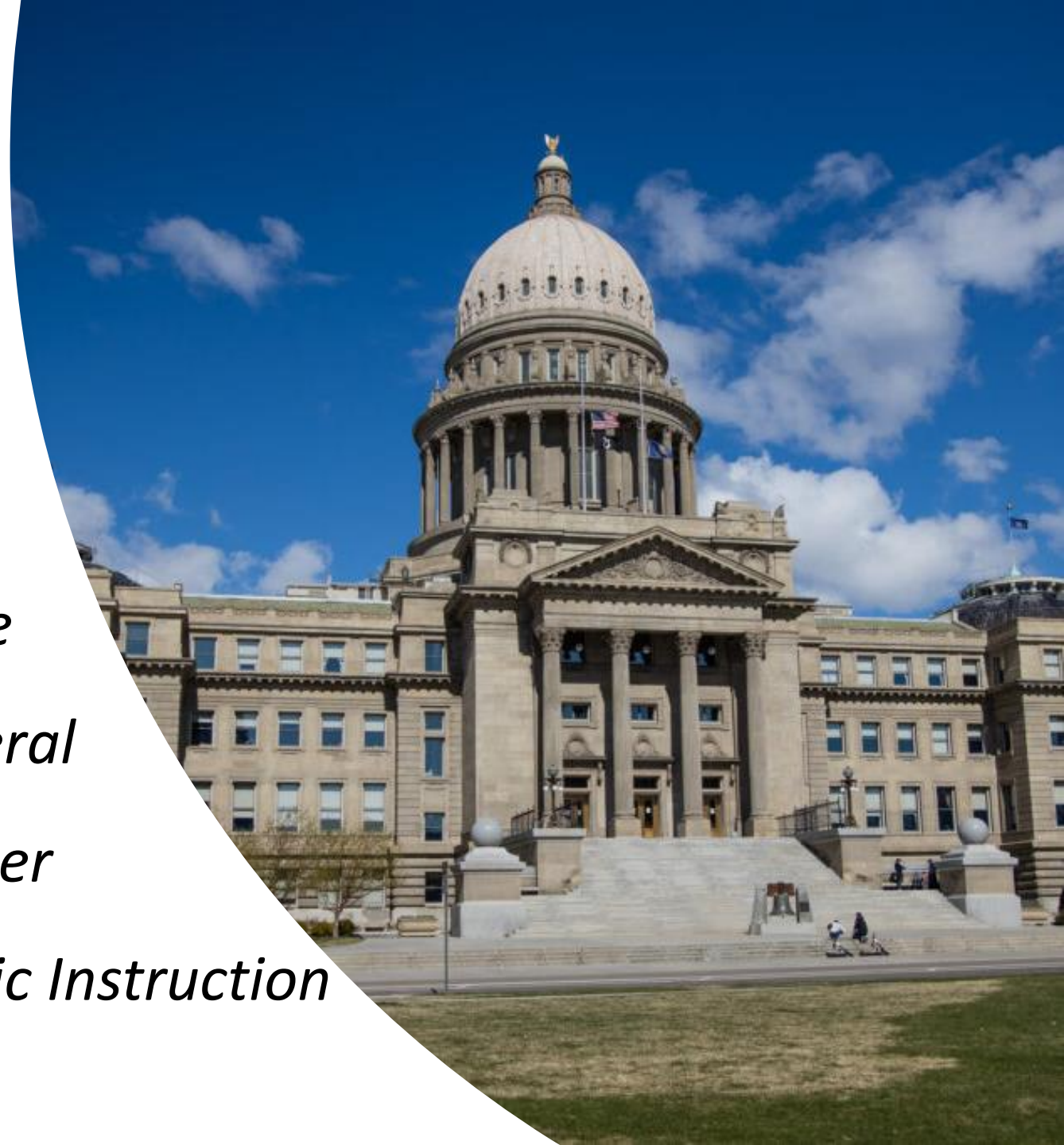
Brad Little, Governor

Phil McGrane, Secretary of State

Raúl R. Labrador, Attorney General

Brandon D Woolf, State Controller

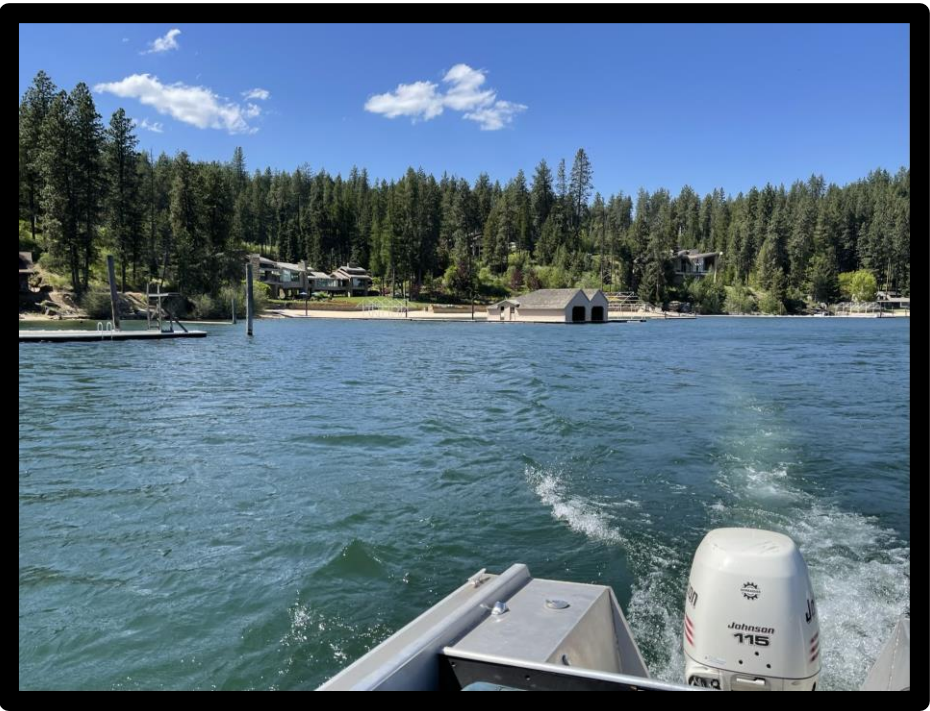
Debbie Critchfield, Sup't of Public Instruction



Idaho Constitution: Article IX § 7 and 8

Article IX section 7 of the Idaho Constitution established that “the State Board of Land Commissioners... shall have the direction, control, and disposition of the public lands of the state, under such regulations as may be prescribed by law.”

Article IX section 8: “It shall be the duty of the State Board of Land Commissioners to provide for the location, protection, or rental of all the lands heretofore, or which may hereafter be granted to or acquired by the state by or from the general government, under such regulations as may be prescribed by law, and in such a manner as will secure the maximum long term financial return to the institution to which is was granted.”



The Mission

To professionally and prudently manage Idaho's endowment assets to maximize long-term financial returns to public schools and other trust beneficiaries and to provide professional assistance to the citizens of Idaho to use, protect and sustain their natural resources.

