

# STATE BOARD OF LAND COMMISSIONERS

September 19, 2023

Department Report

## Subject

Fire Season Update

## Background

As of September 14, Emergency Fire Suppression expenditures are estimated to be \$16,860,500. The Suppression Account will recover an estimated \$2,300,000 of reimbursable costs, for a net obligation of \$14,560,500. The total obligation includes the 2023 contracted aircraft costs and prepositioned contract engines to assist with resource scarcity. These engines were assigned across the state to boost initial attack resources.

## Discussion

On August 4, the Parkway Fire was detected in Post Falls. The fire burned approximately 80 acres and is 100 percent controlled. The Type 3 team has returned the fire to the district.

On August 19, the Old Ahsahka Fire was detected 4.5 miles northwest of Orofino. The fire burned 149 acres and is 100 percent controlled. The Type 3 team has returned the fire to the district.

On August 29, the Hospital Fire was detected in Orofino. The fire burned 53 acres and is 100 percent controlled. The fire was managed by local resources.

### Fire Season Comparison to Date

Number and Size of Fires (Year to Date)				
Year	Human	Lightning	Total	Acres
2020	173	49	222	4,853
2021	227	154	381	141,883
2022	111	133	244	3,887
2023*	195	76	271	2,577
20 Yr. Average (2002-2022)			271	24,567

\*2023 fires are calculated using the protection boundaries of the new Idaho Master Agreement which has increased the area in which IDL is the protecting agency. Therefore, there is a known inconsistency between 2023 numbers and 20-year averages.

August experienced above average rainfall especially in southern Idaho. The long-term weather forecast indicates a warmer and drier fall. The National Significant Wildland Fire Potential Outlook shows normal fire danger for Idaho in September and October.

All restrictions have been lifted.

## Significant Fires Outside of IDL Protection

### Ridge Creek Fire

Agency/Management: Idaho Panhandle National Forests (USFS)

General Location: 3.5 miles east of Hayden Lake, ID

Acres burned: 4,474 acres, 80 percent contained

<b>Total Acres Burned by Ownership</b>	
9/13/2023	
<b>Surface Owner</b>	<b>Acres</b>
Bureau of Land Management	12,177
Other Federal	372
Private	7,936
State Endowment	1,396
Tribal	29
U.S. Forest Service	62,377
<b>Total Acres</b>	<b>84,287</b>

Only fires with perimeters in the Fire Enterprise Geospatial Portal have been included in the analysis.

<b>Fire Deficiency Warrant Spending - 2023 Fire Season through Sept. 13</b>		
<b>Category</b>	<b>Estimated Costs</b>	<b>Notes</b>
Aviation Resources	\$2,750,000	4 SEATS, 2 Fire Bosses, 2 Type 2 Helicopters
Prepositioned Engines	\$885,500	10 Contract engines statewide to boost IA, between 8/1/2023 – 9/15/2023
IDL Non-Team Fires	\$3,800,000	IDL/Assn fires including pre-positioning
IDL Team Fires	\$6,550,000	IDL Team Fire, 3 Type 3
Other Suppression Non-reimbursable	\$575,000	Coeur d'Alene Cache, Dispatch and emergency equipment expenses
Other Suppression Reimbursable	\$2,300,000	Reimbursable (IDL and Fire Department resources supporting non-IDL fires)
<b>Total Estimate YTD</b>	<b>\$16,860,500</b>	Does not include Cost Share Fires which will be reported in October

## Attachments

1. Map–Significant Fires Throughout Idaho
2. Map–Current Fire Restrictions

# 2023 Wildland Fires in Idaho

9/8/2023

## Fire Perimeter Categories

- Current Month
- Last Month
- Two Months Ago
- Three Months and Older

## Surface Management

- Idaho Endowment Lands
- Other State
- Private
- U.S. Forest Service
- Bureau of Land Management
- Tribal Lands
- Other Federal



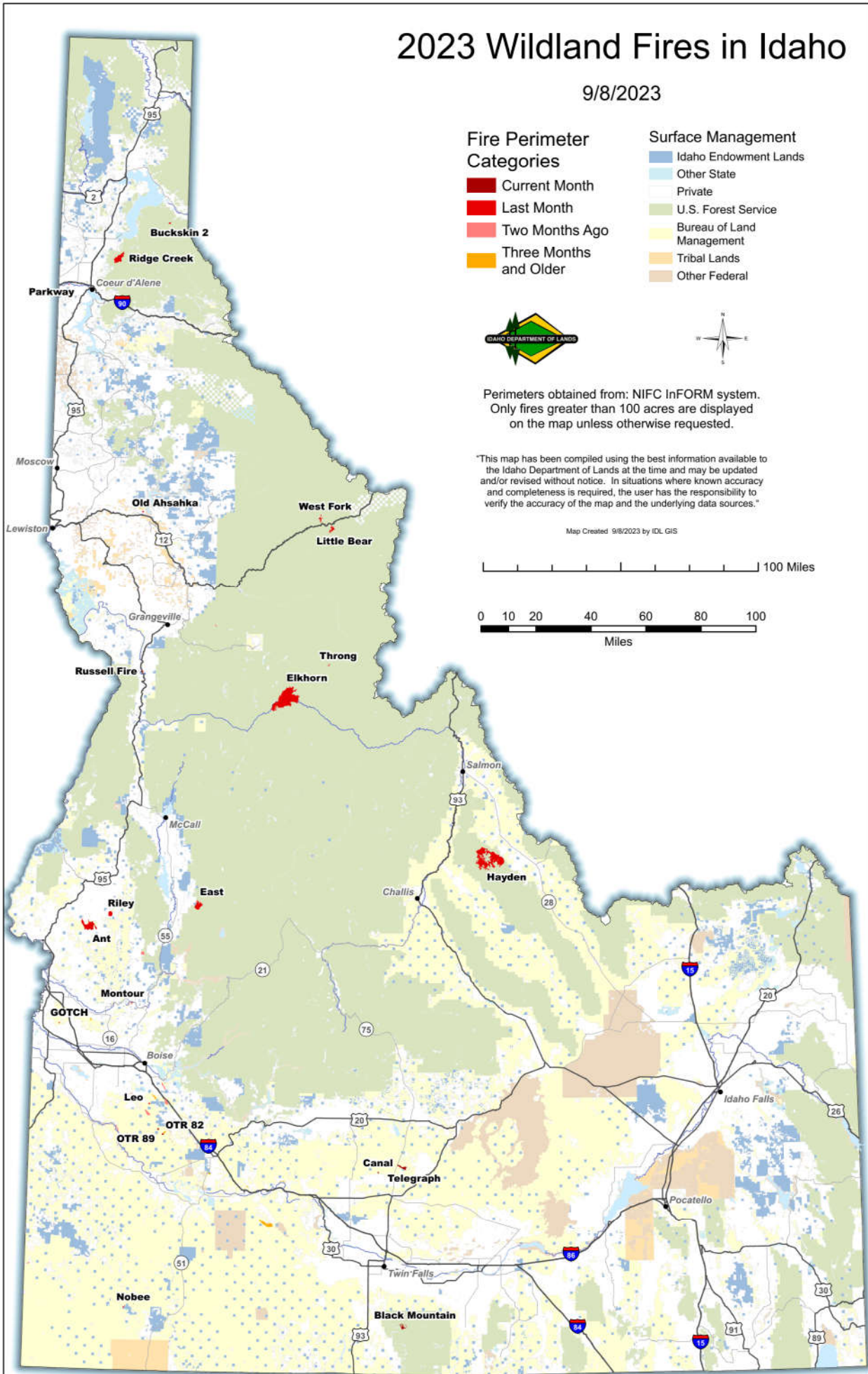
Perimeters obtained from: NIFC InFORM system.  
Only fires greater than 100 acres are displayed on the map unless otherwise requested.

"This map has been compiled using the best information available to the Idaho Department of Lands at the time and may be updated and/or revised without notice. In situations where known accuracy and completeness is required, the user has the responsibility to verify the accuracy of the map and the underlying data sources."

Map Created 9/8/2023 by IDL GIS

0 10 20 40 60 80 100 Miles

0 10 20 40 60 80 100 Miles



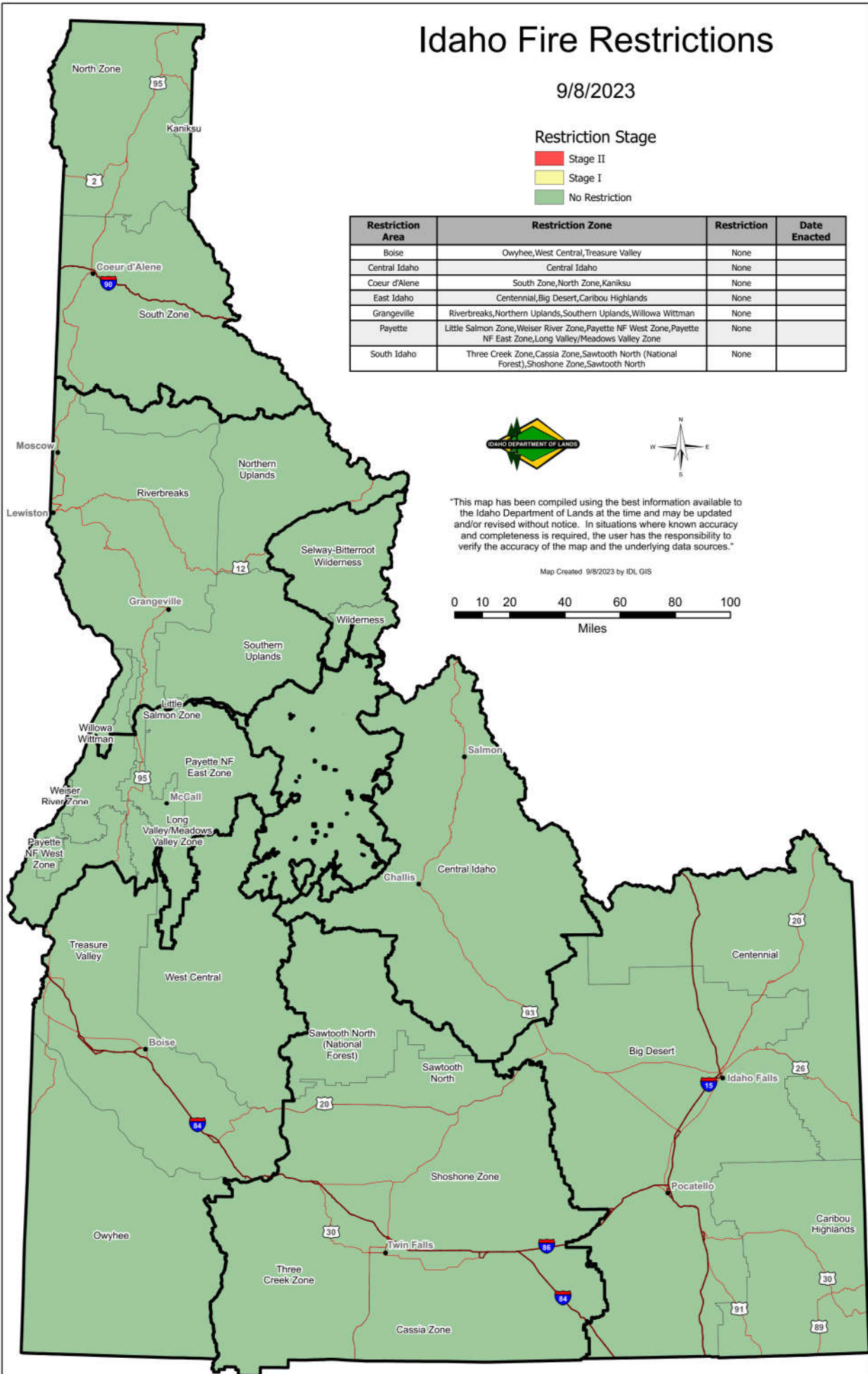
# Idaho Fire Restrictions

9/8/2023

## Restriction Stage

- Stage II
- Stage I
- No Restriction

Restriction Area	Restriction Zone	Restriction	Date Enacted
Boise	Owyhee, West Central, Treasure Valley	None	
Central Idaho	Central Idaho	None	
Coeur d'Alene	South Zone, North Zone, Kaniksu	None	
East Idaho	Centennial, Big Desert, Caribou Highlands	None	
Grangeville	Riverbreaks, Northern Uplands, Southern Uplands, Willowa Wittman	None	
Payette	Little Salmon Zone, Weiser River Zone, Payette NF West Zone, Payette NF East Zone, Long Valley/Meadows Valley Zone	None	
South Idaho	Three Creek Zone, Cassia Zone, Sawtooth North (National Forest), Shoshone Zone, Sawtooth North	None	



"This map has been compiled using the best information available to the Idaho Department of Lands at the time and may be updated and/or revised without notice. In situations where known accuracy and completeness is required, the user has the responsibility to verify the accuracy of the map and the underlying data sources."

Map Created 9/8/2023 by IDL GIS

