

STATE BOARD OF LAND COMMISSIONERS

August 15, 2023
Department Report

Subject

Fire Season Update

Background

As of August 8, Emergency Fire Suppression expenditures are estimated to be \$11,771,500. The Suppression Account will recover an estimated \$557,000 of reimbursable costs, for a net obligation of \$11,214,500. The total obligation includes the 2023 contracted aircraft costs and prepositioned contract engines to assist with resource scarcity. These engines will be assigned across the state to boost initial attack resources.

Discussion

On July 18, the Goldrun Fire was detected 3 miles NE of Ola. The fire burned 800 acres and is in monitor status. The fire was managed by an interagency Type 3 team.

On July 21, the Tyson Fire was detected 5 miles west of Fernwood. The fire burned 155 acres and is 100 percent contained. The fire was managed by an IDL ad hoc Type 3 team and is now back to the district.

On July 27, the Greer Fire was detected near Orofino. The fire burned 100 acres and is controlled.

On July 30, the Russell Fire was detected south of Whitebird. The fire burned 141 acres and is out.

On August 4, the Parkway Fire was detected in Post Falls. The fire burned approximately 80 acres and is 100 percent contained. The Type 3 team has returned the fire to the district.

Fire Season Comparison to Date

Number and Size of Fires (Year to Date)				
Year	Human	Lightning	Total	Acres
2020	77	20	97	330
2021	173	109	282	115,970
2022	75	27	102	421
2023*	152	46	198	1,969
20 Yr. Average (2002-2022)			166	18,434

*2023 fires are calculated using the protection boundaries of the new Idaho Master Agreement which has increased the area in which IDL is the protecting agency. Therefore, there is a known inconsistency between 2023 numbers and 20-year averages.

July put Idaho on a rapid drying trend with above average temperatures and below normal precipitation. The long-term weather forecast indicates a warmer than normal fire season with near normal precipitation through most of the state but drier than average in the panhandle. The National Significant Wildland Fire Potential Outlook shows most of north and southwest Idaho having elevated fire risk through September. Due to need, IDL started several contract engines earlier than the anticipated August 1 date.

Stage 1 fire restrictions started Friday, July 28, in Central Idaho. Stage 2 fire restrictions began on Wednesday, August 9 for the Coeur d'Alene Dispatch Zone.

Significant Fires Outside of IDL Protection

Hayden Fire

Agency/Management: Salmon-Challis National Forest (USFS)
 General Location: 18 miles west of Leadore, ID
 Acres burned: 24,489 acres, 77 percent contained

Consalus Fire

Agency/Management: Idaho Panhandle National Forests (USFS)
 General Location: 10 miles west of Coolin, ID
 Acres burned: 475 acres, 70 percent contained

Elk Horn Fire

Agency/Management: Payette National Forest (USFS)
 General Location: NW of McCall, ID
 Acres burned: 24,039 acres, 12 percent contained

Ridge Creek Fire

Agency/Management: Idaho Panhandle National Forests (USFS)
 General Location: 3.5 miles east of Hayden Lake, ID
 Acres burned: 1,200 acres, 0 percent contained

Total Acres Burned by Ownership	
8/9/2023	
Surface Owner	Acres
Bureau of Land Management	7,704
Other Federal	171
Private	2,492
State Endowment	400
Tribal	28
U.S. Forest Service	51,532
Total Acres	62,327

Only fires with perimeters in the Fire Enterprise Geospatial Portal have been included in the analysis.

Fire Deficiency Warrant Spending - 2023 Fire Season YTD		
Category	Estimated Costs	Notes
Aviation Resources	\$2,750,000	4 SEATS, 2 Fire Bosses, 2 Type 2 Helicopters
Prepositioned Engines	\$885,500	10 Contract engines statewide to boost IA, between 8/1/2023 – 9/15/2023
IDL Non-Team Fires	\$454,000	IDL/Assn fires including pre-positioning
IDL Team Fires	\$6,550,000	IDL Team Fire, 2 Type 3
Other Suppression Non-reimbursable	\$575,000	Coeur d'Alene Cache, Dispatch and emergency equipment expenses
Other Suppression Reimbursable	\$557,000	Reimbursable (IDL and Fire Department resources supporting non-IDL fires)
Total Estimate YTD	\$11,771,500	Does not include Cost Share Fires which will be reported in October

Attachments

1. Map–Significant Fires Throughout Idaho
2. Map–Current Fire Restrictions

2023 Wildland Fires in Idaho

8/9/2023

Fire Perimeter Categories

- Current Month
- Last Month
- Two Months Ago
- Three Months and Older

Surface Management

- Idaho Endowment Lands
- Other State
- Private
- U.S. Forest Service
- Bureau of Land Management
- Tribal Lands
- Other Federal



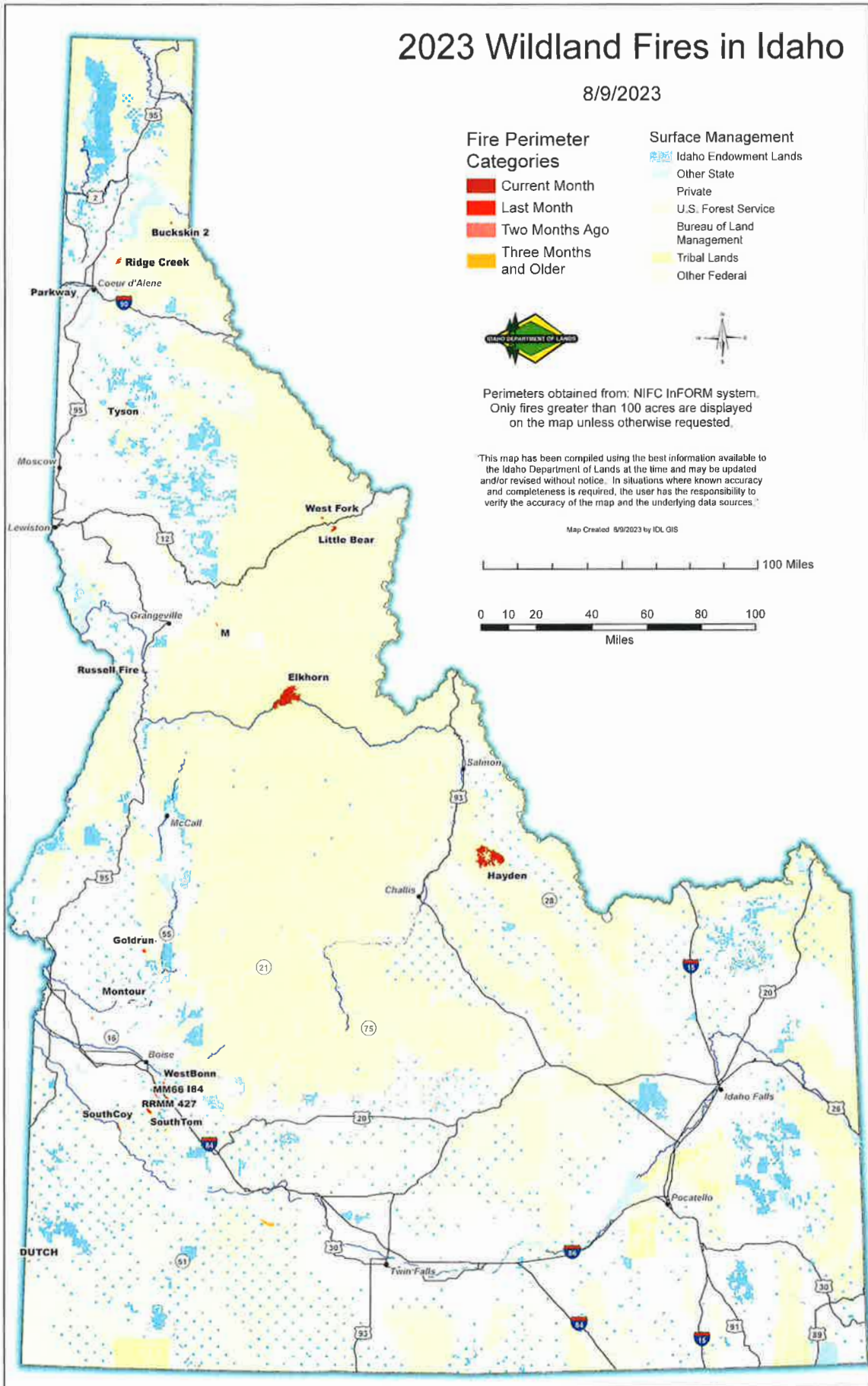
Perimeters obtained from: NIFC InFORM system.
Only fires greater than 100 acres are displayed on the map unless otherwise requested.

"This map has been compiled using the best information available to the Idaho Department of Lands at the time and may be updated and/or revised without notice. In situations where known accuracy and completeness is required, the user has the responsibility to verify the accuracy of the map and the underlying data sources."

Map Created 8/9/2023 by IDL GIS

0 10 20 40 60 80 100 Miles

0 10 20 40 60 80 100 Miles



X:\Projects\FireManagement\WeeklyFireUpdates\2023\AutomateWeeklyFireMap\AutomateWeeklyFireMap.aprx

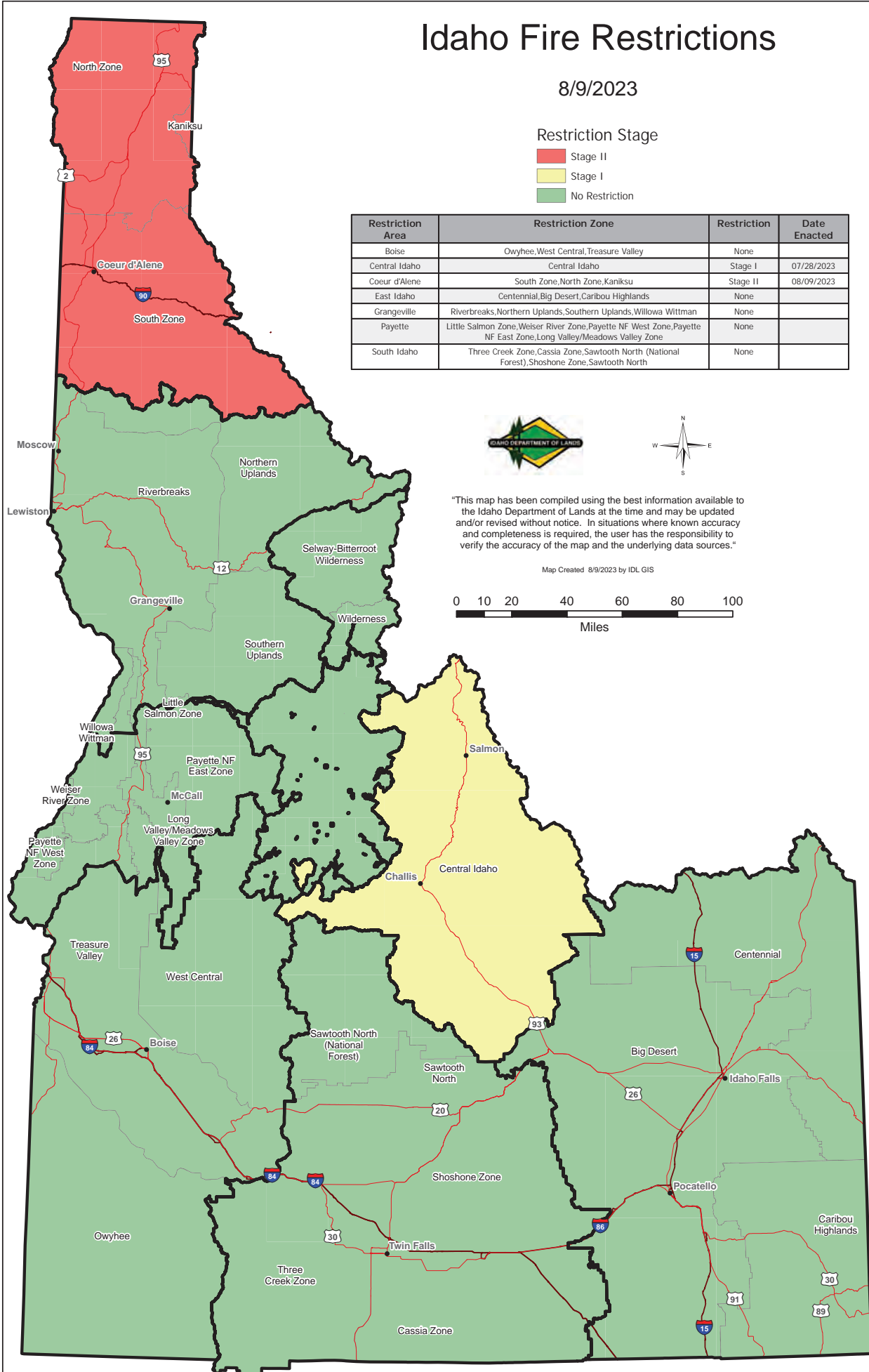
Idaho Fire Restrictions

8/9/2023

Restriction Stage

- Stage II
- Stage I
- No Restriction

Restriction Area	Restriction Zone	Restriction	Date Enacted
Boise	Owyhee, West Central, Treasure Valley	None	
Central Idaho	Central Idaho	Stage I	07/28/2023
Coeur d'Alene	South Zone, North Zone, Kaniksu	Stage II	08/09/2023
East Idaho	Centennial, Big Desert, Caribou Highlands	None	
Grangeville	Riverbreaks, Northern Uplands, Southern Uplands, Willowa Wittman	None	
Payette	Little Salmon Zone, Weiser River Zone, Payette NF West Zone, Payette NF East Zone, Long Valley/Meadows Valley Zone	None	
South Idaho	Three Creek Zone, Cassia Zone, Sawtooth North (National Forest), Shoshone Zone, Sawtooth North	None	



"This map has been compiled using the best information available to the Idaho Department of Lands at the time and may be updated and/or revised without notice. In situations where known accuracy and completeness is required, the user has the responsibility to verify the accuracy of the map and the underlying data sources."

Map Created 8/9/2023 by IDL GIS

