

# IDAHO RANGELAND FIRE PROTECTION ASSOCIATIONS 2023

Since 2012, nearly 700 volunteer wildland firefighters have been trained by agency fire managers. These volunteers provide an important resource not only for their own land and assets, but also assist wildland fire managers protecting public lands.

The ten RFPAs combined protect 1.9 million acres of private rangeland that was previously unprotected, as well as providing secondary protection on 7.2 million acres of federal and state land.

## 2022 FIRE SEASON REVIEW

The 2022 fire season was busier for most RFPAs than 2021, with twice as many fires reported than the previous year.

## 2023 FIRE SEASON PREPAREDNESS

Over 300 RFA members attended in-person Fireline Refresher Training and 40 new members attended Basic Wildland Fire classes.

Mountain Home RFA expanded their boundaries to the north, adding 143,168 acres to their protection including almost 71,000 acres of National Forest. The Boise National Forest will be entering into a cooperative fire agreement with Mountain Home RFA.

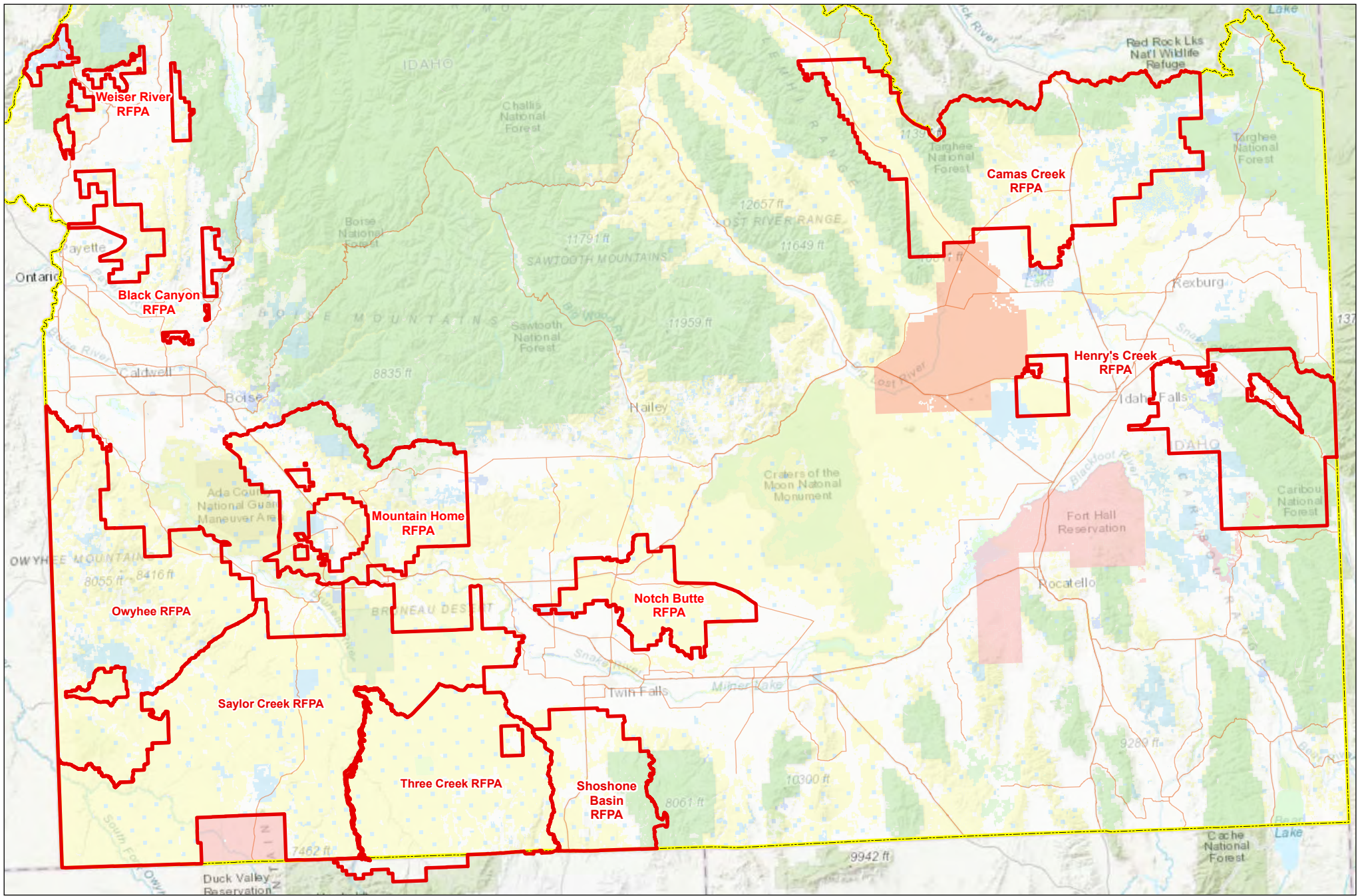
### Idaho RFPAs at a Glance

RFA	Established	Members <sup>1</sup>	Acres	Private	Federal <sup>2</sup>	State <sup>3</sup>	Fires 2022
Black Canyon	2013	22	185,384	108,555	61,111	15,719	2
Camas Creek	2016	29	1,494,608	363,005	1,019,277	112,327	3
Henry's Creek	2017	20	914,696	286,775	571,374	56,547	6
Mountain Home	2012	21	817,495	299,063	427,305	91,127	15
Notch Butte	2016	17	341,170	74,535	247,745	18,890	4
Owyhee	2013	35	1,370,873	254,175	972,268	144,430	5
Saylor Creek	2013	47	2,222,204	131,128	1,964,913	126,162	0
Shoshone Basin	2015	19	488,054	174,940	302,144	10,969	12
Three Creek	2013	58	1,120,203	114,599	951,243	54,362	12
Weiser River	2021	33	135,212	60,246	38,252	27,208	5
<b>TOTALS</b>		<b>301</b>	<b>9,089,900</b>	<b>1,867,021</b>	<b>6,555,632</b>	<b>657,741</b>	<b>64</b>

<sup>1</sup> Received Red Card for the 2023 fire season as of 6/5/2023. The Red Card identifies that annual training is current.

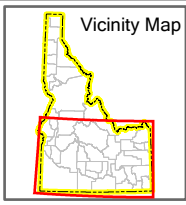
<sup>2</sup> Federal includes Military, NPS, BOR, BIA, DOE, BLM and USFS ownership.

<sup>3</sup> State includes Endowment, State F&G, State Parks and State other.



**Legend**

- Highways
- Existing RFPA
- Bureau of Land Management
- DOE-INL
- Tribal
- Private
- State Endowment
- Other State Land
- US Forest Service
- Other Federal Ownership
- Idaho Boundary



**Rangeland Fire Protection Associations**

5/24/2023

0 10 20 40 60 Miles



**Map Notes and Data Sources**  
 Ownership current as of map date

**Disclaimer:**  
 This map has been compiled using the best information available to the Idaho Department of Lands at the time and may be updated and/or revised without notice. In situations where known accuracy and completeness is required, the user has the responsibility to verify the accuracy of the map and the underlying data sources.