

STATE BOARD OF LAND COMMISSIONERS

April 18, 2023
Regular Agenda

Subject

Department of Lands Fiscal Year 2024 (FY24) Timber Sales Plan

Questions Presented

Shall the Board approve the FY24 Timber Sales Plan?

Discussion

The proposed FY24 Timber Sales Plan, letter of transmittal, and public comment letters are attached (Attachments 1, 2, and 3). The Timber Sales Plan outlines volume targets and harvest proposals.

The proposed FY24 Timber Sales Plan of 328 MMBF continues implementation of the Land Board approved 2019 Forest Asset Management Plan (FAMP).

The volume in the FY24 Timber Sales Plan is determined primarily by a 200-year sustained harvest forecast developed in 2018 and 2019 utilizing Stand Based Inventory data, Woodstock optimization models, and the Continuous Forest Inventory (CFI) data configured Forest Vegetation Simulator (FVS) growth model. The Department recommends that the annual sale level for FY24 be established as displayed in the table below:

Supervisory Area	Annual Sale Volume FY24 Recommended
Priest Lake	28 MMBF
Pend Oreille Lake	35 MMBF
Mica	18 MMBF
St. Joe	80 MMBF
Ponderosa	40 MMBF
Clearwater	55 MMBF
Maggie Creek	30 MMBF
Payette Lakes	21 MMBF
Southwest Idaho	16 MMBF
Eastern Idaho	5 MMBF
Total	328 MMBF

Because of unforeseen natural events like wildfires, wind throw, insect infestations, and disease, volumes for individual supervisory areas may vary from year to year.

As part of the FY24 Timber Sales Plan, the Department will offer a minimum of 20,000 cedar poles for sale. These poles will be offered as part of the Cedar Sales program.

Additional cedar product and pulp volumes may be available for removal at the option of the sale purchaser or in accordance with Land Board policy.

The draft proposed FY24 Timber Sales Plan was posted for public review on the Department's public timber sale website on January 18, 2023, in accordance with the Land Board's public involvement policy. The Department received four written public comments to the Plan.

Recommendation

Direct the Department to proceed with implementation of the FY24 Timber Sales Plan.

Board Action

Attachments

1. Proposed FY24 Timber Sales Plan
2. Transmittal Letter
3. Public Comment Letters

FISCAL YEAR 2024 PROPOSED TIMBER SALES PLAN



IDAHO DEPARTMENT OF LANDS FY24 TIMBER SALE PLAN

July 1, 2023 – June 30, 2024

TABLE OF CONTENTS

Types of Sales 2

Supervisory Area Offices 3-4

Administrative Rules and Timber Sale Financing & Purchasing 5

 Priest Lake 7-11

 Pend Oreille Lake 12-16

 Mica 17-18

 St. Joe 19-24

 Clearwater 25-28

 Ponderosa 29-32

 Maggie Creek 33-35

 Payette Lakes 36-37

 Southwestern Idaho 38-39

 Eastern Idaho 40

Draft

IDAHO DEPARTMENT OF LANDS FY24 TIMBER SALE PLAN

July 1, 2023 – June 30, 2024

[Types of Sales](#)

Timber Sales Timber sales contain an estimated volume of at least 1,000 MBF and exceed the net appraised stumpage value for salvage sales established by the state board of land commissioners. Timber sales are designed to produce maximum stumpage returns to the endowment funds consistent with prudent long-term management practices.

Timber sales are advertised for four weeks in a newspaper in the county where the sale is located, and are sold at public auction.

Direct Sales Direct Sale net appraised stumpage value does not exceed the maximum value established by the State Board of Land Commissioners. This type of sale is to be used to harvest isolated or by-passed parcels of timber of insufficient value and volume to justify a salvage sale. The direct sale is not used where two or more potential purchasers may be interested in bidding on the forest products offered for sale.

The direct sale of forest product stumpage is made without advertisement as authorized by the Director.

IDAHO DEPARTMENT OF LANDS FY24 TIMBER SALE PLAN

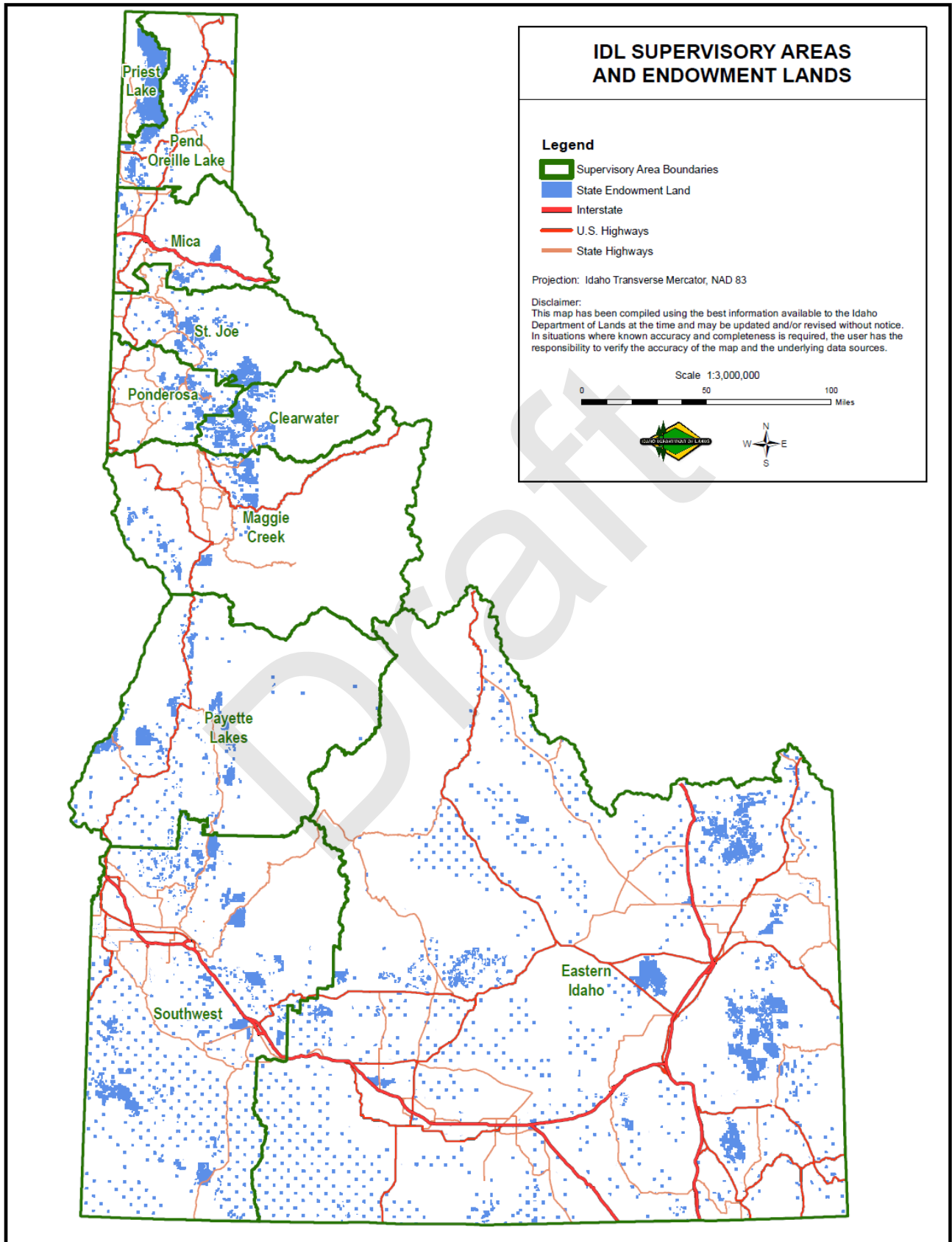
July 1, 2023 – June 30, 2024

[Supervisory Area Offices](#)

SUPERVISORY AREA	AREA SUPERVISOR	PHONE
Priest Lake 4053 Cavanaugh Bay Road Coolin, ID 83821	Dan Brown	(208) 443-2516
Pend Oreille Lake 2550 Highway 2 West Sandpoint, ID 83864	Erik Sjoquist	(208) 263-5104
Mica 3706 Industrial Avenue S Coeur d'Alene, ID 83815	Andrew Smyth	(208) 769-1577
St. Joe 1806 Main Avenue St. Maries, ID 83861	Tony Brede	(208) 245-4551
Ponderosa 3130 Highway 3 Deary, ID 83823	Chris Tretter	(208) 877-1121
Clearwater 10230 Highway 12 Orofino, ID 83544	Jay Sila	(208) 476-4587
Maggie Creek 913 Third Street Kamiah ID 83536	Dave Schwartz	(208) 935-2141
Payette Lakes 555 Deinhard Lane McCall, ID 83638	Scott Corkill	(208) 634-7125
Southwest/South Central 8355 W. State Street Boise, ID 83703	Dean Johnson	(208) 334-3488
Eastern Idaho 3563 Ririe Highway Idaho Falls, ID 83401	Pat Brown	(208) 525-7167

IDAHO DEPARTMENT OF LANDS FY24 TIMBER SALE PLAN

July 1, 2023 – June 30, 2024



IDAHO DEPARTMENT OF LANDS FY24 TIMBER SALE PLAN

July 1, 2023 – June 30, 2024

Administrative Rules and Purchaser Sale Requirements

Links to detailed information on the internet are provided below.

Administrative Rules of the Department of Lands

[20.02.14 – Selling Forest Products on State-Owned Endowment Lands](#)

For information regarding timber sale procedures, bidding procedures, bonding requirements and insurance requirements, click on the link below.

[Purchaser Sale Requirements](#)

Draft

Idaho Department of Lands Fiscal Year 2024 Proposed Timber Sale Plan

This Fiscal Year 2024 Proposed Timber Sale Plan will be presented to the Idaho Board of Land Commissioners at the April 2023 Land Board meeting for approval.

All timber sales listed on the 2024 Proposed Timber Sale Plan have been available for public review on the Notice of Proposed Future Sales on the IDL timber sale website since May 2021.

Comments regarding this proposed plan will be accepted until March 31, 2023. Send comments, preferably via email, to:

Spencer Hanson
Idaho Department of Lands
Timber Sale Program Manager
Email address: shanson@idl.idaho.gov
3284 W. Industrial Loop
Coeur d'Alene, ID 83815



Draft

IDAHO DEPARTMENT OF LANDS FISCAL YEAR 2024 TIMBER SALE PLAN

July 1, 2023 - June 30, 2024

**Priest Lake
Supervisory Area**

Sale Name:

4 Corner Flat

Estimated Auction: Spring 2024
 Location: 3 Miles S. of Coolin
 Drainages: Priest River
 Class I Streams: No
 Class II Streams: No
 Silvicultural Prescription: Seedtree
 Harvest System: Ground Based

APPROXIMATE
 ACREAGE: 766 acres VOLUME: 2,200 MBF

Timber Sale Legal Description

Subsection	Section	Township	Range
Pts. N2SW, Pts W2SE, S2SW	27	059N	004W
Pts. N2SW, Pts. N2SE, S2SW, S2SE	28	059N	004W
Pts. SE	29	059N	004W
Pts. NENE	32	059N	004W
N2NE, SENE, NENW, NESE, Pts. SWNE, Pts. NWNW, Pts. SENW, Pts. NWSE, Pts. SESE	33	059N	004W
Pts. NWNE, Pts. E2NW, Pts. NWSW, W2NW	34	059N	004W

Sale Name:

Big Cool

Estimated Auction: Winter 2024
 Location: 1.5 Miles SW of Coolin
 Drainages: Priest River
 Class I Streams: No
 Class II Streams: Yes
 Silvicultural Prescription: Seedtree
 Harvest System: Ground Based and Cable Yarding

APPROXIMATE
 ACREAGE: 315 acres VOLUME: 2,200 MBF

Timber Sale Legal Description

Subsection	Section	Township	Range
Pts. SWSW	15	059N	004W
Pts. N2SW, Pts. SWSW, Pts. S2SE, SESW	16	059N	004W
Pts. SESE	17	059N	004W
Pts. NENE	20	059N	004W
NENW, Pts. N2NE, Pts. SENE, Pts. NWNW, Pts. SENW	21	059N	004W

IDAHO DEPARTMENT OF LANDS FISCAL YEAR 2024 TIMBER SALE PLAN

July 1, 2023 - June 30, 2024

**Priest Lake
Supervisory Area**

Sale Name:

Chicopee Cedar

Estimated Auction: Summer 2023
 Location: 8 Miles SE of Coolin
 Drainages: Middle Fork
 Class I Streams: Yes
 Class II Streams: Yes
 Silvicultural Prescription: Clearcut, Seedtree
 Harvest System: Ground Based and Cable Yarding

APPROXIMATE
 ACREAGE: 292 acres
 VOLUME: 3,400 MBF
 1,000 Poles

Timber Sale Legal Description

Subsection	Section	Township	Range
Pts. S2NW, Pts. SW, Pts. W2SE	03	058N	003W
Pts. N2NE, Pts. SWNE, Pts. N2NW, Pts. SENW, Pts. NESW, Pts. N2SE, SENE	10	058N	003W
Pts. NW, Pts. N2SW, Pts. SESW, Pts. W2SE	11	058N	003W

Sale Name:

Little Goblin

Estimated Auction: Spring 2024
 Location: 10 Miles NE of Coolin
 Drainages: Indian Creek
 Class I Streams: Yes
 Class II Streams: Yes
 Silvicultural Prescription: Clearcut, Seedtree
 Harvest System: Ground Based and Cable Yarding

APPROXIMATE
 ACREAGE: 180 acres
 VOLUME: 3,500 MBF

Timber Sale Legal Description

Subsection	Section	Township	Range
Pts. SESE	07	061N	003W
Pts. S2SW, Pts. SWSE	08	061N	003W
N2NW, SWNW, NWSW, Pts. W2NE, Pts. SENW, Pts. NESW, Pts. S2SW	17	061N	003W
Pts. Gov Lots 2, 3, 4, Pts. Gov Lots 3, 4, Pts. N2NE, Pts. E2NW, Pts. E2SW, Pts. SE,	18	061N	003W
S2NE, Pts. Gov Lots 2, 3, 4, Pts. Gov Lots 3, 4, Pts. N2NE, Pts. E2NW, Pts. E2SW,	18	061N	003W
Pts. SE, S2NE Pts. E2SE	13	061N	004W

IDAHO DEPARTMENT OF LANDS FISCAL YEAR 2024 TIMBER SALE PLAN

July 1, 2023 - June 30, 2024

**Priest Lake
Supervisory Area**

Sale Name:

NOSR DP

Estimated Auction: Winter 2024
 Location: 5 Miles SE of Coolin
 Drainages: North Fork East River
 Class I Streams: No
 Class II Streams: Yes
 Silvicultural Prescription: Overstory Removal
 Harvest System: Ground Based and Cable Yarding

APPROXIMATE
 ACREAGE: 298 acres VOLUME: 2,000 MBF

Timber Sale Legal Description

Subsection	Section	Township	Range
Pts. Gov Lots 2, Pts. SWNE, Pts. E2SW, Pts. NWSE, Pts. S2SE	02	058N	004W
Pts. Gov Lots 1, 2, 3, Pts. NE, Pts. SENW, Pts. NESW, Pts. SE	19	059N	003W
Pts. SWNW	20	059N	003W
Pts. E2NE, Pts. NESE	24	059N	004W

Sale Name:

Peakabou Pulp

Estimated Auction: Spring 2024
 Location: 23 Miles NE of Coolin
 Drainages: Caribou Creek
 Class I Streams: Yes
 Class II Streams: Yes
 Silvicultural Prescription: Clearcut
 Harvest System: Ground Based and Cable Yarding

APPROXIMATE
 ACREAGE: 656 acres VOLUME: 5,000 MBF
 8,000 Pulp

Timber Sale Legal Description

Subsection	Section	Township	Range
NESW, NWSE, Pts. S2NE, Pts. S2NW, Pts. NWSW, Pts. S2SW, Pts. NESE, Pts. S2SE	17	063N	003W
Pts. NE, Pts. SENW, Pts. NESW, Pts. N2SE, Pts. SESE	18	063N	003W
Pts. W2NE, Pts. N2NW, Pts. SENW, Pts. NESW, Pts. SE	20	063N	003W
Pts. N2NE	29	063N	003W
Pts. NESW, Pts. S2SW, Pts. SWSE	13	063N	004W
Pts. E2NE	23	063N	004W
Pts. N2NW, Pts. SWNW, Pts. E2SW, Pts. W2SE	24	063N	004W
Pts. W2NE, Pts. NW	25	063N	004W
Pts. E2NE, Pts. S2SW	26	063N	004W
Pts. N2NW	35	063N	004W

IDAHO DEPARTMENT OF LANDS FISCAL YEAR 2024 TIMBER SALE PLAN

July 1, 2023 - June 30, 2024

**Priest Lake
Supervisory Area**

Sale Name:

Sergent Fenton

Estimated Auction: Summer 2023
 Location: 4 Miles NE of Coolin
 Drainages: Fenton Creek
 Class I Streams: Yes
 Class II Streams: Yes
 Silvicultural Prescription: Seedtree
 Harvest System: Ground Based and Cable Yarding

APPROXIMATE
 ACREAGE: 254 acres VOLUME: 3,500 MBF

Timber Sale Legal Description

Subsection	Section	Township	Range
Pts. Gov Lots 4	01	059N	004W
Pts. Gov Lots 1, 2, 5, 6	02	059N	004W
Pts. Gov Lots 1, 3, Pts. W2NE, Pts. E2SW, Pts. W2SE	26	060N	004W
Pts. NE, Pts. NENW, Pts. SESW, Pts. SE	35	060N	004W
Pts. SWNE, Pts. S2NW, Pts. N2SW, Pts. SWSW	36	060N	004W

Sale Name:

Uleda Creek Cedar

Estimated Auction: Summer 2023
 Location: 8 Miles SE of Coolin
 Drainages: Middle Fork East River
 Class I Streams: Yes
 Class II Streams: Yes
 Silvicultural Prescription: Clearcut, Seedtree
 Harvest System: Ground Based and Cable Yarding

APPROXIMATE
 ACREAGE: 178 acres VOLUME: 2,700 MBF
 1,000 Poles

Timber Sale Legal Description

Subsection	Section	Township	Range
Pts. E2SW, Pts. W2SE	15	058N	003W
Pts. NE, Pts. NENW, Pts. NESE	22	058N	003W
Pts. W2NW, Pts. N2SW	23	058N	003W

IDAHO DEPARTMENT OF LANDS FISCAL YEAR 2024 TIMBER SALE PLAN

July 1, 2023 - June 30, 2024

**Priest Lake
Supervisory Area**

Sale Name:

Two Bear Over

Estimated Auction: Summer 2023
 Location: 13 Miles N. of Coolin
 Drainages: Bear Creek
 Class I Streams: Yes
 Class II Streams: Yes
 Silvicultural Prescription: Clearcut, Overstory Removal
 Harvest System: Ground Based and Cable Yarding

APPROXIMATE
 ACREAGE: 916 acres VOLUME: 3,500 MBF

Subsection	Timber Sale Legal Description	Section	Township	Range
	Pts. Gov Lots 2, 3, 4, Pts. SWNE, Pts. S2NW, Pts. SW, Pts. SE	02	061N	004W
	Pts. Gov Lots 1, 2, 6, Pts. SENE, Pts. SE	03	061N	004W
	Pts. Gov Lots 1, Pts. N2NE, Pts. SENE, Pts. NENW, Pts. S2NW, Pts. N2SW, Pts. SWSW	10	061N	004W
	Pts. NWNE, Pts. N2NW, Pts. SWNW	11	061N	004W
	Pts. Gov Lots 3, Pts. E2SW, Pts. SE	19	062N	003W
	Pts. Gov Lots 1, 2, Pts. E2NW	14	062N	004W
	Pts. Gov Lots 2	15	062N	004W
	Pts. Gov Lots 1, 2, 3, 4, Pts. W2SE	22	062N	004W
	Pts. W2NE, Pts. SENW, Pts. NESW, Pts. SWSW, Pts. W2SE, SESW	24	062N	004W
	Pts. NWNE, Pts. NW, Pts. N2SW	25	062N	004W
	Pts. SENE	26	062N	004W
	Pts. Gov Lots 2	34	062N	004W
	Pts. SWSE	35	062N	004W

Supervisory Area Totals: Priest Lake

Supervisory Area Acres: 3,855 acres
 Supervisory Area Total Sawlog: 28,000 MBF
 Supervisory Area Total Cedar Poles: 2,000 Cedar Poles
 Supervisory Area Total Pulp: 8,000 MBF

IDAHO DEPARTMENT OF LANDS FISCAL YEAR 2024 TIMBER SALE PLAN

July 1, 2023 - June 30, 2024

**Pend Oreille Lake
Supervisory Area**

Sale Name:

Careywood Chop Cedar

Estimated Auction: Fall 2023
 Location: 3 miles east of Careywood
 Drainages: Careywood Creek
 Class I Streams: Yes
 Class II Streams: Yes
 Silvicultural Prescription: Clearcut, Overstory Removal, Seedtree
 Harvest System: Ground based

	APPROXIMATE	
ACREAGE:		VOLUME:
249 acres		5,395 MBF 430 Poles

Timber Sale Legal Description

Subsection	Section	Township	Range
Pts. W2SE, Pts. SESE	09	T54N	R02W
Pts. N2, Pts. SW, Pts. N2SE	16	T54N	R02W
NWSW, Pts. NE, Pts. NW, Pts. NESW, Pts. S2SW, Pts. N2SE	16	T54N	R02W

Sale Name:

East Elmira Cedar

Estimated Auction: Summer 2023
 Location: 2 miles east of Elmira
 Drainages: Bloom Lake
 Class I Streams: No
 Class II Streams: Yes
 Silvicultural Prescription: Clearcut, Overstory Removal
 Harvest System: Ground based and prescriptive

	APPROXIMATE	
ACREAGE:		VOLUME:
172 acres		3,310 MBF 220 Poles

Timber Sale Legal Description

Subsection	Section	Township	Range
Pts. Gov Lots 3, 4, Pts. SENW, Pts. NESW, Pts. S2SW	01	T59N	R01W
Pts. NW, Pts. N2SW	12	T59N	R01W

IDAHO DEPARTMENT OF LANDS FISCAL YEAR 2024 TIMBER SALE PLAN

July 1, 2023 - June 30, 2024

**Pend Oreille Lake
Supervisory Area**

Sale Name:

Lower Curtis Cedar

Estimated Auction: Winter 2024
 Location: 6 miles south of Priest River, ID
 Drainages: Curtis Creek
 Class I Streams: Yes
 Class II Streams: Yes
 Silvicultural Prescription: Clearcut, Overstory Removal
 Harvest System: Ground based and prescriptive

	APPROXIMATE	
ACREAGE:		VOLUME:
220 acres		6,367 MBF 350 Poles

Timber Sale Legal Description

Subsection	Section	Township	Range
Pts. Gov Lots 4, Pts. SWNE, Pts. SENW, Pts. SW, Pts. W2SE	24	T55N	R05W
Pts. Gov Lots 1, 2, 3, 4, Pts. NWNE, Pts. N2NW, Pts. SWNW, Pts. SESW, Pts. W2SE	25	T55N	R05W

Sale Name:

More Otts Cedar

Estimated Auction: Summer 2023
 Location: 6 miles southwest of Sandpoint, ID
 Drainages: Otts Basin
 Class I Streams: No
 Class II Streams: Yes
 Silvicultural Prescription: Clearcut, Overstory Removal
 Harvest System: Ground based and prescriptive

	APPROXIMATE	
ACREAGE:		VOLUME:
649 acres		6,650 MBF 200 Poles

Timber Sale Legal Description

Subsection	Section	Township	Range
Gov Lot 2, Pts. Gov Lots 3, 4, Pts. SESW, Pts. E2SE, SENW, NESW, W2SE	07	T56N	R02W
Gov Lot 4, Pts. Gov Lots 1, 2, 3, NENW, Pts. SENW, Pts. E2SW	18	T56N	R02W
Pts. Gov Lots 1, 2, 3	19	T56N	R02W
Pts. S2SE	12	T56N	R03W
Pts. N2NE, Pts. SENE	13	T56N	R03W

IDAHO DEPARTMENT OF LANDS FISCAL YEAR 2024 TIMBER SALE PLAN

July 1, 2023 - June 30, 2024

Pend Oreille Lake Supervisory Area

Sale Name:

Ridge Runner

Estimated Auction: Spring 2024
 Location: 5 miles northeast of Naples, ID
 Drainages: Highland Creek
 Class I Streams: No
 Class II Streams: Yes
 Silvicultural Prescription: Clearcut, Seedtree
 Harvest System: Ground based and prescriptive

APPROXIMATE
 ACREAGE: 86 acres VOLUME: 1,785 MBF

Timber Sale Legal Description

Subsection	Section	Township	Range
Pts. S2	20	T61N	R01W

Sale Name:

River View

Estimated Auction: Summer 2023
 Location: 1 mile southeast Priest River
 Drainages: Pend Orielle River
 Class I Streams: No
 Class II Streams: No
 Silvicultural Prescription: Clearcut
 Harvest System: Ground based

APPROXIMATE
 ACREAGE: 110 acres VOLUME: 1,840 MBF

Timber Sale Legal Description

Subsection	Section	Township	Range
Pts. Gov Lots 2, 3, Pts. SENW, Pts. SESW	05	T55N	R04W
Pts. N2NW, Pts. SWNW	08	T55N	R04W

Sale Name:

Rocky Pine Cedar

Estimated Auction: Winter 2024
 Location: 6.5 miles northeast of Priest River, ID
 Drainages: Pine Creek
 Class I Streams: No
 Class II Streams: Yes
 Silvicultural Prescription: Clearcut, Overstory Removal, Seedtree
 Harvest System: Gound based and cable

APPROXIMATE
 ACREAGE: 171 acres VOLUME: 2,400 MBF
 400 Poles

Timber Sale Legal Description

Subsection	Section	Township	Range
Pts. SESW	21	T57N	R04W
Pts. W2NW, Pts. S2SW	27	T57N	R04W
Pts. NE, Pts. NW, Pts. E2SE	28	T57N	R04W
Pts. NWNW	34	T57N	R04W

IDAHO DEPARTMENT OF LANDS FISCAL YEAR 2024 TIMBER SALE PLAN

July 1, 2023 - June 30, 2024

**Pend Oreille Lake
Supervisory Area**

Sale Name:

Steep Ranger

Estimated Auction: Fall 2023
 Location: 8 miles north of Priest River, ID
 Drainages: Ranger Creek
 Class I Streams: Yes
 Class II Streams: Yes
 Silvicultural Prescription: Clearcut, Seedtree
 Harvest System: Ground based and cable

APPROXIMATE
 ACREAGE: 125 acres VOLUME: 2,400 MBF

Timber Sale Legal Description

Subsection	Section	Township	Range
Pts. SESW, Pts. SE	09	T57N	R04W
Pts. SWNE, Pts. NESW, Pts. S2SW, Pts. W2SE	10	T57N	R04W
Pts. N2NW	15	T57N	R04W

Sale Name:

Sundance Kid

Estimated Auction: Fall 2023
 Location: 5 miles west of Naples, ID
 Drainages: Highland Creek
 Class I Streams: Yes
 Class II Streams: Yes
 Silvicultural Prescription: Clearcut, Overstory Removal, Seedtree
 Harvest System: Ground Based

APPROXIMATE
 ACREAGE: 262 acres VOLUME: 4,855 MBF

Timber Sale Legal Description

Subsection	Section	Township	Range
Pts. Gov Lots 4	05	T60N	R01W
Pts. N2NE, Pts. SWNE, Pts. E2SW, Pts. SE, SENE	30	T61N	R01W
Pts. NE, Pts. NWNW, Pts. S2NW, Pts. SW	32	T61N	R01W

IDAHO DEPARTMENT OF LANDS FISCAL YEAR 2024 TIMBER SALE PLAN

July 1, 2023 - June 30, 2024

**Pend Oreille Lake
Supervisory Area**

Sale Name:

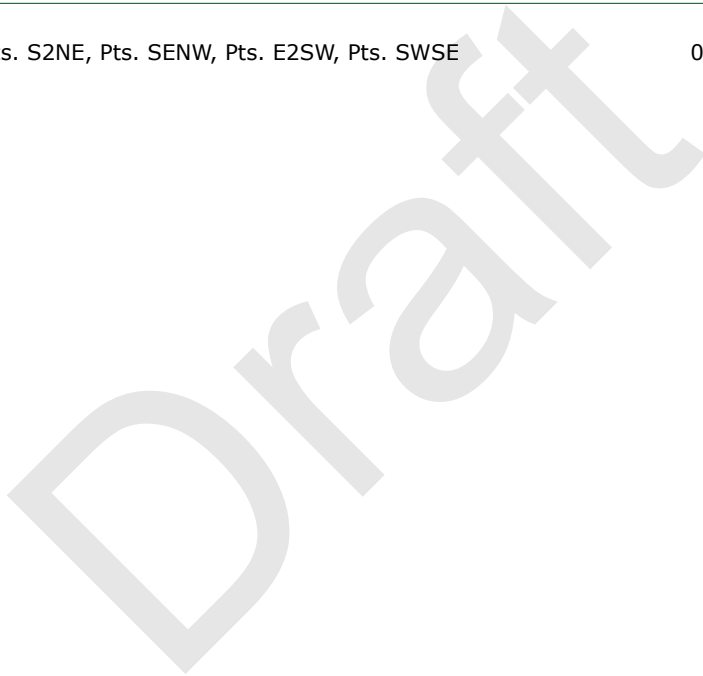
The Last Sand Cedar

Estimated Auction: Spring 2024
 Location: 4 miles east of Elmira, ID
 Drainages: Sand Lake
 Class I Streams: No
 Class II Streams: Yes
 Silvicultural Prescription: Clearcut, Overstory Removal
 Harvest System: Ground based and prescriptive

	APPROXIMATE	
ACREAGE:		VOLUME:
160 acres		1,560 MBF 100 Poles

Timber Sale Legal Description

Subsection	Section	Township	Range
Pts. Gov Lots 1, 2, 3, N2SE, Pts. S2NE, Pts. SENW, Pts. E2SW, Pts. SWSE	06	T59N	R01E



Supervisory Area Totals: Pend Oreille Lake

Supervisory Area Acres: 2,204 acres
 Supervisory Area Total Sawlog: 36,565 MBF
 Supervisory Area Total Cedar Poles: 1,700 Cedar Poles

IDAHO DEPARTMENT OF LANDS FISCAL YEAR 2024 TIMBER SALE PLAN

July 1, 2023 - June 30, 2024

**Mica
Supervisory Area**

Sale Name:

Bear Basin

Estimated Auction: Fall 2023
 Location: 3 Miles NE Pinehurst
 Drainages: Bear Creek
 Class I Streams: Yes
 Class II Streams: Yes
 Silvicultural Prescription: Clearcut
 Harvest System: Tractor and Cable

APPROXIMATE
 ACREAGE: 479 acres VOLUME: 6,000 MBF

Timber Sale Legal Description

Subsection	Section	Township	Range
Pts. S2SW, Pts. SE	22	049N	002E
Pts. S2NW, Pts. N2SW, Pts. SWSW	23	049N	002E
NWNW	26	049N	002E
N2NE, NENW, S2NW, Pts. NWNW	27	049N	002E

Sale Name:

Stateline Cable

Estimated Auction: Spring 2024
 Location: 5 Miles S Stateline
 Drainages: Cable Creek
 Class I Streams: Yes
 Class II Streams: Yes
 Silvicultural Prescription: Clearcut, Seedtree
 Harvest System: Tractor and Cable

APPROXIMATE
 ACREAGE: 295 acres VOLUME: 3,000 MBF

Timber Sale Legal Description

Subsection	Section	Township	Range
Govt. Lots 1&2, NENE, Pts. W2NE, Pts. SENE, Pts. E2NW, Pts. N2SE, Pts. SWSE, SESE	36	050N	006W

Sale Name:

Twin Chilco OSR

Estimated Auction: Spring 2024
 Location: 1 Mile E Chilco
 Drainages: Sage Creek, Twin Lakes
 Class I Streams: No
 Class II Streams: Yes
 Silvicultural Prescription: Overstory Removal
 Harvest System: Tractor

APPROXIMATE
 ACREAGE: 375 acres VOLUME: 3,000 MBF

Timber Sale Legal Description

Subsection	Section	Township	Range
Govt. Lots 1-3, N2NE, NENW, Pts. S2NE, Pts. SENW, Pts. NESW, Pts. NWSE	16	052N	003W
NW	36	053N	005W

IDAHO DEPARTMENT OF LANDS FISCAL YEAR 2024 TIMBER SALE PLAN

July 1, 2023 - June 30, 2024

**Mica
Supervisory Area**

Sale Name:

West Latour

Estimated Auction: Spring 2024
 Location: 5.5 Miles S Rose Lake
 Drainages: Latour Creek
 Class I Streams: Yes
 Class II Streams: Yes
 Silvicultural Prescription: Clearcut, Overstory Removal
 Harvest System: Tractor and Cable

APPROXIMATE
 ACREAGE: 574 acres VOLUME: 6,000 MBF

Timber Sale Legal Description

Subsection	Section	Township	Range
Govt. Lots 2, 5, 6, 8, 12, 13, Pts. Govt. Lots 1, 3, 4, 7, 9, 11, 14, Pts. SWNE, Pts. S2NW, Pts.	03	047N	001W
Pts. Govt. Lots 1, 5-13, Pts. SENE, Pts. SWSE, Pts. SESW, Pts. NWSW	04	047N	001W
Pts. SENW, Pts. SESW, Pts. SWSE	27	048N	001W
Pts. Govt. Lot 1	33	048N	001W
Pts. Govt Lot 1, Pts. NENW	34	048N	001W
Pts. Govt. Lots 1&3	16	47N	01W
Pts. Govt. Lot 8	9	47N	01W

Supervisory Area Totals: Mica

Supervisory Area Acres: 1,722 acres
 Supervisory Area Total Sawlog: 18,000 MBF

IDAHO DEPARTMENT OF LANDS FISCAL YEAR 2024 TIMBER SALE PLAN

July 1, 2023 - June 30, 2024

**St. Joe
Supervisory Area**

Sale Name:

Finns Elk

Estimated Auction: Spring 2024
 Location: 6 mile NE of Santa, Id
 Drainages: Pokey, Davis, and Garveson creeks
 Class I Streams: Yes
 Class II Streams: Yes
 Silvicultural Prescription: Clearcut, Seedtree, Shelterwood
 Harvest System: Ground Based, Cable

APPROXIMATE
 ACREAGE: 323 acres VOLUME: 9,040 MBF

Timber Sale Legal Description

Subsection	Section	Township	Range
Pts. SENW, NESW, S2SW, W2SE, SWNE	2	44 N	1 W
Pts. NE, E2NW, NESW, N2SE, SESE	20	45 N	1 E
Pts. NW	32	45 N	1 E

Sale Name:

First Place Cedar

Estimated Auction: Spring 2024
 Location: 5 miles W of Fernwood
 Drainages: Tyson Creek, Little Carpenter Creek, Carpenter Creek
 Class I Streams: Yes
 Class II Streams: Yes
 Silvicultural Prescription: Clearcut
 Harvest System: Ground Based, Cable

APPROXIMATE
 ACREAGE: 216 acres VOLUME: 6,715 MBF
 730 Poles

Timber Sale Legal Description

Subsection	Section	Township	Range
Pts. SW, Pts. N2SE, Pts. SWSE	15	43N	01W
Pts. N2NW	22	43N	01W
Pts. S2SW	24	43N	01W
Pts. N2NW, Pts. SWNW	25	43N	01W
Pts. E2NE, Pts. N2SW, Pts. SWSW	5	43N	01W

IDAHO DEPARTMENT OF LANDS FISCAL YEAR 2024 TIMBER SALE PLAN

July 1, 2023 - June 30, 2024

**St. Joe
Supervisory Area**

Sale Name:

Huckleberry Grouse

Estimated Auction: Winter 2024
 Location: 4.9 mi. SE Calder, ID
 Drainages: Mica, Marble
 Class I Streams: No
 Class II Streams: Yes
 Silvicultural Prescription: Clearcut, Seedtree
 Harvest System: Ground Based, Cable

APPROXIMATE
 ACREAGE: 310 acres VOLUME: 7,790 MBF

Timber Sale Legal Description

Subsection	Section	Township	Range
Pts. Govt. Lots 3-5, Pts. SWNE, Pts. SENW	6	44N	03E
Pts. Govt. Lots 1-4, Pts. W2NE, Pts. N2NW, Pts. SWSE	36	45N	02E

Sale Name:

Keel Over OSR

Estimated Auction: Fall 2023
 Location: 4 Miles South of Clarkia, ID
 Drainages: West Fork Saint Maries River
 Class I Streams: Yes
 Class II Streams: Yes
 Silvicultural Prescription: Clearcut, Overstory Removal, Seedtree
 Harvest System: Ground Based, Cable

APPROXIMATE
 ACREAGE: 258 acres VOLUME: 6,595 MBF

Timber Sale Legal Description

Subsection	Section	Township	Range
Pts. SESE	23	42N	01E
Pts. SWSW	24	42N	01E
Pts. W2NW, Pts. NWSW	25	42N	01E
Pts. NENE, Pts. S2NE, Pts. SE	26	42N	01E
Pts. N2NE	35	42N	01E

IDAHO DEPARTMENT OF LANDS FISCAL YEAR 2024 TIMBER SALE PLAN

July 1, 2023 - June 30, 2024

**St. Joe
Supervisory Area**

Sale Name:

Lively Alderaan

Estimated Auction: Spring 2024
 Location: 5 Miles SW of Emida ID.
 Drainages: Willow Creek
 Class I Streams: No
 Class II Streams: Yes
 Silvicultural Prescription: Clearcut, Shelterwood
 Harvest System: Ground Based, Cable

APPROXIMATE
 ACREAGE: 157 acres VOLUME: 3,612 MBF

Timber Sale Legal Description

Subsection	Section	Township	Range
Pts. NWNE, Pts. S2NE, Pts. NENW, Pts. S2NW, Pts. N2SW, Pts. N2SE	14	T43N	R03W
Pts. N2NESE, Pts. SENESE	15	T43N	R03W

Sale Name:

Mid Olson

Estimated Auction: Winter 2024
 Location: 5 Miles NE of Fernwood, ID
 Drainages: Olson Creek
 Class I Streams: Yes
 Class II Streams: Yes
 Silvicultural Prescription: Clearcut, Overstory Removal, Shelterwood
 Harvest System: Ground Based, Cable

APPROXIMATE
 ACREAGE: 414 acres VOLUME: 7,249 MBF

Timber Sale Legal Description

Subsection	Section	Township	Range
Pts. SW, Pts. SWSE	25	44N	01E
Pts.	26	44N	01E
Pts.	35	44N	01E
Pts. NWNE, Pts. N2NE, Pts. SWNW	36	44N	01E

IDAHO DEPARTMENT OF LANDS FISCAL YEAR 2024 TIMBER SALE PLAN

July 1, 2023 - June 30, 2024

**St. Joe
Supervisory Area**

Sale Name:

Retired Sawing Cedar

Estimated Auction: Fall 2023
 Location: Floodwood
 Drainages: Cedar Creek-Floodwood Creek
 Class I Streams: Yes
 Class II Streams: Yes
 Silvicultural Prescription: Clearcut
 Harvest System: Ground Based, Cable

APPROXIMATE
 ACREAGE: 171 acres VOLUME: 8,150 MBF
 2,660 Poles

Timber Sale Legal Description

Subsection	Section	Township	Range
Pts. NWNE, Pts. NENW	10	41N	4E
Pts. S2NW, Pts. NESW, Pts. W2SW	3	41N	5E
Pts. SENE, Pts. SE	4	41N	5E

Sale Name:

Smith Sandwich

Estimated Auction: Fall 2023
 Location: 20.5 Miles SE of Clarkia
 Drainages: North Fork Clearwater
 Class I Streams: No
 Class II Streams: Yes
 Silvicultural Prescription: Clearcut, Seedtree
 Harvest System: Ground Based, Cable

APPROXIMATE
 ACREAGE: 225 acres VOLUME: 7,814 MBF

Timber Sale Legal Description

Subsection	Section	Township	Range
Pts. SW	36	41N	04E
Pts. SW	11	41N	05E
Pts. NWNW, Pts. SW	13	41N	05E
Pts. E2NE	23	41N	05E
Pts. NE, Pts. W2NW	24	41N	05E
Pts. NWNE, Pts. N2NW	25	41N	05E
Pts. N2NE	26	41n	05e
Pts. N2NE, Pts. E2NW	28	41N	05E
Pts. S2NW, Pts. N2SW	31	41N	05E
Pts. SW	4	41N	05E
Pts. SENE, Pts. N2SW	20	41N	5E
Pts. SWNE, Pts. S2NW, Pts. NWSW, Pts. S2SE	21	41N	5E

IDAHO DEPARTMENT OF LANDS FISCAL YEAR 2024 TIMBER SALE PLAN

July 1, 2023 - June 30, 2024

**St. Joe
Supervisory Area**

Sale Name:

Stanton Something Cedar

Estimated Auction: Fall 2023

Location: 33 Road Miles E of Clarkia ID

Drainages: Stanton Creek, Dworshak Reservoir

Class I Streams: Yes

Class II Streams: Yes

Silvicultural Prescription: Clearcut, Overstory Removal, Shelterwood

Harvest System: Ground Based, Cable, Shovel

APPROXIMATE

ACREAGE:
520 acres

VOLUME:
10,730 MBF
175 Poles

Timber Sale Legal Description

Subsection	Section	Township	Range
Pts. SESW, Pts. SWSE	1	41N	04E
Pts. S2NE, Pts. S2	11	41N	04E
Pts. NE, Pts. NENW, Pts. W2SW, Pts. SESW, Pts. N2SE	12	41N	04E
Pts. NENW	13	41N	04E
Pts. NENE, Pts. NENW	14	41N	04E
Pts. SW	26	41N	04E
Pts. NESE, Pts. S2SE	27	41N	04E
Pts. NESE	33	41N	04E
Pts. Govt. Lots 3-4, Pts. NE, Pts. NWSW, Pts. N2SE	34	41N	04E
Pts. NWNW, Pts. SWNW	35	41N	04E

IDAHO DEPARTMENT OF LANDS FISCAL YEAR 2024 TIMBER SALE PLAN

July 1, 2023 - June 30, 2024

**St. Joe
Supervisory Area**

Sale Name:

Syringa Spots

Estimated Auction: Summer 2023
 Location: 6 Miles S. of St. Maries
 Drainages: Syringa Cr.
 Class I Streams: No
 Class II Streams: Yes
 Silvicultural Prescription: Clearcut, Shelterwood
 Harvest System: Ground Based, Cable

APPROXIMATE
 ACREAGE: 366 acres VOLUME: 12,200 MBF

Subsection	Timber Sale Legal Description	Section	Township	Range
Pts. Govt. Lots 1-4, Pts. E2NW		18	45N	01W
Pts. SESE		12	45N	02W
Pts. E2NE, Pts. W2, Pts. SE		13	45N	02W

Draft

Supervisory Area Totals: St. Joe

Additional Small Volume Sales: 105 MBF
 Supervisory Area Acres: 2,960 acres
 Supervisory Area Total Sawlog: 80,000 MBF
 Supervisory Area Total Cedar Poles: 3,565 Cedar Poles

IDAHO DEPARTMENT OF LANDS FISCAL YEAR 2024 TIMBER SALE PLAN

July 1, 2023 - June 30, 2024

**Clearwater
Supervisory Area**

Sale Name:

13 Mile II

Estimated Auction: Fall 2023
 Location: 10 Miles Northeast of Orofino, ID
 Drainages: Whiskey Cr.
 Class I Streams: Yes
 Class II Streams: Yes
 Silvicultural Prescription: Clearcut, Overstory Removal
 Harvest System: Ground based, Cable Yarding

APPROXIMATE
 ACREAGE: 220 acres VOLUME: 5,400 MBF

Timber Sale Legal Description

Subsection	Section	Township	Range
Pts. NWNW	15	37N	3E
Pts. NE, Pts. SW, Pts. N2SE, Pts. SESE	16	37N	3E
Pts. N2SE, Pts. SESE	17	37N	3E
Pts. N2NE, Pts. SENE	21	37N	3E
Pts. N2NW, Pts. SWNW	22	37N	3E

Sale Name:

Benton East Salvage

Estimated Auction: Spring 2024
 Location: Benton Butte
 Drainages: Benton Creek
 Class I Streams: No
 Class II Streams: No
 Silvicultural Prescription: Clearcut
 Harvest System: Salvage. Ground based, cable yarding, prescriptive.

APPROXIMATE
 ACREAGE: 250 acres VOLUME: 7,800 MBF

Timber Sale Legal Description

Subsection	Section	Township	Range
Pts. S2N2, Pts. N2SW, Pts. SE	35	41N	05E

IDAHO DEPARTMENT OF LANDS FISCAL YEAR 2024 TIMBER SALE PLAN

July 1, 2023 - June 30, 2024

**Clearwater
Supervisory Area**

Sale Name:

Canyon Divide

Estimated Auction: Summer 2023
 Location: 9 mi NE from Orofino
 Drainages: Canyon Creek
 Class I Streams: No
 Class II Streams: Yes
 Silvicultural Prescription: Clearcut, Seedtree
 Harvest System: Ground Based

APPROXIMATE
 ACREAGE: 238 acres VOLUME: 5,501 MBF

Timber Sale Legal Description

Subsection	Section	Township	Range
Pts. SESE	07	037N	003E
Pts. S2	08	037N	003E
Pts. S2NW, Pts. N2SW	09	037N	003E

Sale Name:

Cougar Track

Estimated Auction: Fall 2023
 Location: 7 miles NW of Headquarters, ID
 Drainages: Cougar Creek
 Class I Streams: Yes
 Class II Streams: Yes
 Silvicultural Prescription: Seedtree
 Harvest System: prescriptive

APPROXIMATE
 ACREAGE: 210 acres VOLUME: 6,060 MBF

Timber Sale Legal Description

Subsection	Section	Township	Range
Pts. S2N2, Pts. SW, Pts. N2SE	16	39N	05E
Pts. SENE, Pts. NESE, Pts. S2SE	17	39N	05E

Sale Name:

Lakefront Yard

Estimated Auction: Winter 2024
 Location: 9 mi northwest of Headquarters, ID
 Drainages: Dworshak Reservoir - North Fork Clearwater River
 Class I Streams: No
 Class II Streams: Yes
 Silvicultural Prescription: Clearcut
 Harvest System: Ground based, cable yarding.

APPROXIMATE
 ACREAGE: 106 acres VOLUME: 4,680 MBF

Timber Sale Legal Description

Subsection	Section	Township	Range
Pts. E2NE, Pts. NESW, Pts. SE	32	39N	4E
Pts. NWNW	33	39N	4E

IDAHO DEPARTMENT OF LANDS FISCAL YEAR 2024 TIMBER SALE PLAN

July 1, 2023 - June 30, 2024

**Clearwater
Supervisory Area**

Sale Name:

Lower Slocum

Estimated Auction: Summer 2023
 Location: 12 mi NE from Orofino
 Drainages: Whiskey Creek
 Class I Streams: No
 Class II Streams: Yes
 Silvicultural Prescription: Clearcut, ROW, Seedtree
 Harvest System: Ground based and cable yarding

APPROXIMATE
 ACREAGE: 163 acres VOLUME: 4,896 MBF

Timber Sale Legal Description

Subsection	Section	Township	Range
Pts. SESE	02	037N	003E
Pts. S2SE	03	037N	003E
Pts. NE	10	037N	003E
Pts. NENE, Pts. S2NE, Pts. SENW	11	037N	003E

Sale Name:

Snake Farm

Estimated Auction: Winter 2024
 Location: 6 miles west of Headquarters, ID
 Drainages: Snake Creek
 Class I Streams: No
 Class II Streams: Yes
 Silvicultural Prescription: Clearcut, Overstory Removal, Seedtree
 Harvest System: Ground Based, Cable yarding

APPROXIMATE
 ACREAGE: 413 acres VOLUME: 8,962 MBF

Timber Sale Legal Description

Subsection	Section	Township	Range
Pts. NE, Pts. N2SWNW, Pts. SENW	24	038N	004E
Pts. Govt. Lots 1-2 & 4, Pts. SESW	19	038N	005E
Pts. SWNW, Pts. W2SW, Pts. SESW	29	038N	005E
Pts. Govt. Lots 1, Pts. W2NE, Pts. SENE, Pts. E2NW, Pts. N2SE, Pts. SESE	30	038N	005E
Pts. E2NE	31	038N	005E
Pts. W2NW	32	038N	005E

IDAHO DEPARTMENT OF LANDS FISCAL YEAR 2024 TIMBER SALE PLAN

July 1, 2023 - June 30, 2024

**Clearwater
Supervisory Area**

Sale Name:

Upper Reeds Creek

Estimated Auction: Spring 2024
 Location: 1 mile S of Headquarters, ID
 Drainages: Reeds Creek
 Class I Streams: No
 Class II Streams: Yes
 Silvicultural Prescription: Clearcut
 Harvest System: Prescriptive

APPROXIMATE
 ACREAGE: 206 acres VOLUME: 7,005 MBF

Timber Sale Legal Description

Subsection	Section	Township	Range
Pts. E2NE, Pts. SWNE, Pts. SE	36	38N	5E
Pts. Govt. Lots 3 & 4, Pts. E2SW	30	38N	6E
Pts. Govt. Lots 1 & 2, Pts. NENW	31	38N	6E

Sale Name:

West Y Cedar

Estimated Auction: Summer 2023
 Location: 12 miles North of Orofino, Idaho
 Drainages: Dworshak Reservoir
 Class I Streams: No
 Class II Streams: Yes
 Silvicultural Prescription: Clearcut, Seedtree
 Harvest System: Ground based

APPROXIMATE
 ACREAGE: 170 acres VOLUME: 4,722 MBF
 1,000 Poles

Timber Sale Legal Description

Subsection	Section	Township	Range
Pts. S2NE, Pts. E2SW, Pts. SE	10	38N	02E
Pts. SWNW, Pts. W2SW	11	38N	02E

Supervisory Area Totals: Clearwater

Supervisory Area Acres: 1,976 acres
 Supervisory Area Total Sawlog: 55,026 MBF
 Supervisory Area Total Cedar Poles: 1,000 Cedar Poles

IDAHO DEPARTMENT OF LANDS FISCAL YEAR 2024 TIMBER SALE PLAN

July 1, 2023 - June 30, 2024

**Ponderosa
Supervisory Area**

Sale Name:

A Cedar

Estimated Auction: Fall 2023
 Location: 11 miles northeast of Southwick, ID
 Drainages: Long Meadow Creek
 Class I Streams: No
 Class II Streams: Yes
 Silvicultural Prescription: Overstory Removal
 Harvest System: Cable and ground-based harvest systems

APPROXIMATE
 ACREAGE: 158 acres VOLUME: 1,430 MBF
 2,840 Poles

Timber Sale Legal Description

Subsection	Section	Township	Range
Pts. SENE; Pts. E2SW; Pts. SE	25	39N	01E
Pts. Govt. Lots 2-4	30	39N	02E

Sale Name:

Benedict Cedar

Estimated Auction: Summer 2023
 Location: 12 miles northeast of Elk River, ID
 Drainages: Isabella Creek, Stony Creek, Breakfast Creek
 Class I Streams: Yes
 Class II Streams: Yes
 Silvicultural Prescription: Single Tree Select
 Harvest System: Helicopter

APPROXIMATE
 ACREAGE: 609 acres VOLUME: 10,500 MBF
 12,360 Poles

Timber Sale Legal Description

Subsection	Section	Township	Range
Pts. Govt. Lot 4, Pts. SESW, Pts. S2SE	07	41N	04E
Pts. E2SW, Pts. W2SE, Pts. SESE	08	41N	04E
Pts. SWSW	09	41N	04E
Pts. W2W2	16	41N	04E
Pts. N2, Pts. E2SW, Pts. SE	17	41N	04E
Pts. Govt. Lot 1, Pts. N2NE, Pts. NENW	18	41N	04E
Pts. N2, Pts. N2SW, Pts. SESW, Pts. N2SE	20	41N	04E
Pts. SWNW, Pts. NWSW	21	41N	04E

IDAHO DEPARTMENT OF LANDS FISCAL YEAR 2024 TIMBER SALE PLAN

July 1, 2023 - June 30, 2024

**Ponderosa
Supervisory Area**

Sale Name:

Bovill Scatter

Estimated Auction: Summer 2023
 Location: 3 miles south of Bovill, Id
 Drainages: Ruby Creek
 Class I Streams: No
 Class II Streams: Yes
 Silvicultural Prescription: Clearcut, Overstory Removal
 Harvest System: Cable and Ground-Based

APPROXIMATE
 ACREAGE: 440 acres VOLUME: 6,575 MBF

Timber Sale Legal Description

Subsection	Section	Township	Range
Pts. S2NE, Pts. N2SE	7	40N	01 E
Pts. N2NW	16	40N	01E
Pts. NE, Pts. SENW, Pts. NESW, Pts. NWSE	17	40N	01E
Pts. NWNE, Pts. S2NE, Pts. NW, Pts. N2SW, Pts. SESW, Pts. SE	8	40N	01E
Pts. S2SW	9	40N	01E

Sale Name:

JR Vassar

Estimated Auction: Fall 2023
 Location: 2 miles west of Bovill, ID
 Drainages: Hog Meadow Creek
 Class I Streams: No
 Class II Streams: Yes
 Silvicultural Prescription: Clearcut, Overstory Removal
 Harvest System: Ground-based Harvest Systems

APPROXIMATE
 ACREAGE: 179 acres VOLUME: 3,660 MBF

Timber Sale Legal Description

Subsection	Section	Township	Range
Pts. Govt. Lots 6&7, Pts. E2SW	34	41N	01W
Pts. SWNE, Pts. W2NW, Pts. SENW, Pts. N2SW, Pts. SWSW, Pts. NWSE	35	41N	01W

IDAHO DEPARTMENT OF LANDS FISCAL YEAR 2024 TIMBER SALE PLAN

July 1, 2023 - June 30, 2024

**Ponderosa
Supervisory Area**

Sale Name:

Silver Spur

Estimated Auction: Fall 2023
 Location: 11 miles northeast of Southwick, ID
 Drainages: Long Meadow Creek, Elk Creek
 Class I Streams: No
 Class II Streams: Yes
 Silvicultural Prescription: Clearcut, Overstory Removal
 Harvest System: Cable and ground-based harvest systems

APPROXIMATE
 ACREAGE: 368 acres VOLUME: 7,205 MBF

Subsection	Timber Sale Legal Description	Section	Township	Range
Pts. SWNE, Pts. S2NW, Pts. SW, Pts. NWSE		23	39N	01E
Pts. SESE		24	39N	01E
Pts. NENE, SWNE, Pts. SENW, Pts. NESW, Pts. NWSE		25	39N	01E
Pts. Gov Lot 4		19	39N	02E
Pts. Gov Lot 1		30	39N	02E
Pts. Gov Lots 3-4, Pts. NE, Pts. E2NW, Pts. E2SW, Pts. N2SE, Pts. SWSE		31	39N	02E
Pts. SWNW, Pts. NWSW		32	39N	02E

Sale Name:

Swamp Witch

Estimated Auction: Spring 2024
 Location: 7 miles southeast of Elk River, ID
 Drainages: Pick and Pan Ck, Swamp Ck
 Class I Streams: No
 Class II Streams: Yes
 Silvicultural Prescription: Clearcut, Overstory Removal
 Harvest System: Cable and Ground-based

APPROXIMATE
 ACREAGE: 138 acres VOLUME: 5,560 MBF

Subsection	Timber Sale Legal Description	Section	Township	Range
Pts. SESE		21	39N	03E
Pts. S2SW, Pts. SWSE		22	39N	03E
Pts. N2NW, Pts. SWNW, Pts. NWSW		27	39N	03E
Pts. NENE		28	39N	03E

IDAHO DEPARTMENT OF LANDS FISCAL YEAR 2024 TIMBER SALE PLAN

July 1, 2023 - June 30, 2024

**Ponderosa
Supervisory Area**

Sale Name:

Y Schwartz Cedar

Estimated Auction: Winter 2024

Location: 4 miles northwest of Deary, ID

Drainages: Schwartz Creek

Class I Streams: Yes

Class II Streams: Yes

Silvicultural Prescription: Clearcut

Harvest System: Cable and ground-based harvest systems

APPROXIMATE

ACREAGE:
128 acres

VOLUME:
4,905 MBF
1,230 Poles

Subsection	Timber Sale Legal Description	Section	Township	Range
Pts. NW, Pts. NWSW		27	041N	02W
Pts. NENE, Pts. S2NE, Pts. SWNW, Pts. NWSW, Pts. N2SE		28	041N	02W
Pts. S2NE, Pts. N2SE, Pts. SESE		29	041N	02W
Pts. E2NE		32	041N	02W
Pts. W2NW		33	041N	02W

Supervisory Area Totals: Ponderosa

Additional Small Volume Sales: 165 MBF
 Supervisory Area Acres: 2,020 acres
 Supervisory Area Total Sawlog: 40,000 MBF
 Supervisory Area Total Cedar Poles: 16,430 Cedar Poles

IDAHO DEPARTMENT OF LANDS FISCAL YEAR 2024 TIMBER SALE PLAN

July 1, 2023 - June 30, 2024

**Maggie Creek
Supervisory Area**

Sale Name:

Brown Back Mountain

Estimated Auction: Fall 2023
 Location: 7 Miles SE of Weippe, Idaho
 Drainages: Blonde Creek, Trout Creek, Pete & Charlie Creek
 Class I Streams: Yes
 Class II Streams: Yes
 Silvicultural Prescription: Shelterwood
 Harvest System: Ground Based & Cable Yarding

APPROXIMATE
 ACREAGE: 445 acres VOLUME: 8,000 MBF

Timber Sale Legal Description

Subsection	Section	Township	Range
Pts. Govt. Lots 3, 4, Pts. SWNE, Pts. SENW, Pts. NESW, Pts. S2SW, SWNW, NWSW	02	34N	05E
Govt. Lot 1, Pts. Gov Lot 2, Pts. SENE, Pts. E2SE	03	34N	05E
Pts. N2NE	10	34N	05E
Pts. NWNW	11	34N	05E
NESE, Pts. SESW, Pts. NWSE, Pts. S2SE	34	35N	05E
Pts. NWSW	35	35N	05E

Sale Name:

Cottonwood Heights

Estimated Auction: Winter 2024
 Location: 5 Miles S of Weippe, Idaho
 Drainages: Lolo Creek
 Class I Streams: No
 Class II Streams: No
 Silvicultural Prescription: Seedtree, Single Tree Select
 Harvest System: Ground Based

APPROXIMATE
 ACREAGE: 175 acres VOLUME: 1,230 MBF

Timber Sale Legal Description

Subsection	Section	Township	Range
Pts. S2NE, Pts. S2	11	34N	04E

Sale Name:

Found In Space

Estimated Auction: Summer 2023
 Location: 4 Miles NE of Weippe, Idaho
 Drainages: Grassshopper Creek
 Class I Streams: No
 Class II Streams: Yes
 Silvicultural Prescription: Shelterwood
 Harvest System: Ground Based

APPROXIMATE
 ACREAGE: 230 acres VOLUME: 5,415 MBF

Timber Sale Legal Description

Subsection	Section	Township	Range
Pts.	31, 32	36N	05E

IDAHO DEPARTMENT OF LANDS FISCAL YEAR 2024 TIMBER SALE PLAN

July 1, 2023 - June 30, 2024

**Maggie Creek
Supervisory Area**

Sale Name:

Lovin Lacey Cedar

Estimated Auction: Winter 2024
 Location: 7 Miles SE of Weippe, Idaho
 Drainages: Miles Creek
 Class I Streams: No
 Class II Streams: Yes
 Silvicultural Prescription: Shelterwood
 Harvest System: Ground Based

APPROXIMATE
 ACREAGE: 322 acres VOLUME: 5,000 MBF

Timber Sale Legal Description

Subsection	Section	Township	Range
Pts.	9	34N	04E
Pts. SENE, Pts. NESE	8	34N	05E

Sale Name:

Model T Coulee

Estimated Auction: Winter 2024
 Location: 2 Miles NW of Weippe, Idaho
 Drainages: Jim Ford Creek
 Class I Streams: Yes
 Class II Streams: Yes
 Silvicultural Prescription: Clearcut, Overstory Removal, Seedtree, Shelterwood
 Harvest System: Ground Based & Cable Yarding

APPROXIMATE
 ACREAGE: 720 acres VOLUME: 5,430 MBF

Timber Sale Legal Description

Subsection	Section	Township	Range
Pts.	3, 4, 5, 6,	35N	04E

Sale Name:

School Section OSR Cedar

Estimated Auction: Summer 2023
 Location: 6 Miles E of Kamiah, Idaho
 Drainages: Maggie Creek, Tom Taha Creek
 Class I Streams: No
 Class II Streams: Yes
 Silvicultural Prescription: Clearcut, Overstory Removal
 Harvest System: Ground Based

APPROXIMATE
 ACREAGE: 287 acres VOLUME: 3,425 MBF

Timber Sale Legal Description

Subsection	Section	Township	Range
	36	34N	04E

IDAHO DEPARTMENT OF LANDS FISCAL YEAR 2024 TIMBER SALE PLAN

July 1, 2023 - June 30, 2024

**Maggie Creek
Supervisory Area**

Sale Name:

Sill Creek Entirety

Estimated Auction: Spring 2024

Location: 2 Miles SE of Clearwater, Idaho

Drainages: Sill Creek

Class I Streams: No

Class II Streams: Yes

Silvicultural Prescription: Shelterwood

Harvest System: Ground Based & Cable Yarding

APPROXIMATE

ACREAGE:
201 acres

VOLUME:
3,015 MBF

Timber Sale Legal Description

Subsection	Section	Township	Range
Pts. SWNE, Pts. NW, Pts. E2SW, Pts. W2SE, Pts. SESE	29	31N	05E

Draft

Supervisory Area Totals: Maggie Creek

Supervisory Area Acres: 2,380 acres
Supervisory Area Total Sawlog: 31,515 MBF

IDAHO DEPARTMENT OF LANDS FISCAL YEAR 2024 TIMBER SALE PLAN

July 1, 2023 - June 30, 2024

**Payette Lakes
Supervisory Area**

Sale Name:

Dry Sky Ton

Estimated Auction: Summer 2023
 Location: 10 miles NW of Council, ID
 Drainages: Olive, Dry, and Fir Creek
 Class I Streams: No
 Class II Streams: Yes
 Silvicultural Prescription: Clearcut, Overstory Removal, Seedtree, Shelterwood, Single Tree Select
 Harvest System: Ground based and cable

APPROXIMATE
 ACREAGE: 606 acres
 VOLUME: 6,482 MBF
 36,688 Tons

Timber Sale Legal Description

Subsection	Section	Township	Range
Pts. NWNW, Pts. SWSW	16	17N	2W
Pts. NENW, Pts. Govt. Lots 1&2, Pts. SENW, Pts. NESW, Pts. Govt. Lot 3	18	17N	2W
Pts. Govt. Lot 1, Pts. W2NE, Pts. SENE	20	17N	2W
Pts. SESW, Pts. SWSE, Pts. Govt. Lot 10	6	17N	2W
Pts. Govt. Lot 1, Pts. W2NE, Pts. NENW, Pts. Govt. Lots 2&3, Pts. SENW, Pts. NESW	7	17N	2W
Pts. Govt. Lots 4&5, Pts. SESW, Pts. E2SE	7	17N	2W
Pts. W2SW	8	17N	2W
Pts. NENE	13	17N	3W
Pts. Govt. Lots 1,3,4, Pts. W2NE, Pts. W2, Pts. W2SE,	17	7N	2W

Sale Name:

JP North Ton

Estimated Auction: Summer 2023
 Location: 6 miles NW of New Meadows, ID
 Drainages: Weiser River
 Class I Streams: No
 Class II Streams: Yes
 Silvicultural Prescription: Overstory Removal, Seedtree
 Harvest System: Ground based

APPROXIMATE
 ACREAGE: 323 acres
 VOLUME: 1,840 MBF
 10,414 Tons

Timber Sale Legal Description

Subsection	Section	Township	Range
Pts. W2NE, Pts. W2, Pts. NWSE	36	20N	1E

IDAHO DEPARTMENT OF LANDS FISCAL YEAR 2024 TIMBER SALE PLAN

July 1, 2023 - June 30, 2024

**Payette Lakes
Supervisory Area**

Sale Name:

Meadow Handle Ton

Estimated Auction: Fall 2023
 Location: 7.6 Miles SE McCall
 Drainages: Jug Creek
 Class I Streams: No
 Class II Streams: Yes
 Silvicultural Prescription: Clearcut, Seedtree
 Harvest System: Skyline, Tractor

APPROXIMATE
 ACREAGE: 559 acres VOLUME: 7,805 MBF
 44,177 Tons

Timber Sale Legal Description

Subsection	Section	Township	Range
Pts. NWNE, Pts. NW, Pts. N2SW, Pts. SESW, Pts. W2SE	16	17N	4E
Pts. NENE	17	17N	4E
Pts. S2NE, Pts. SENW, Pts. NESW, Pts. S2SW, Pts. E2SE	4	17N	4E
S2SE	5	17N	4E
Pts. E2	8	17N	4E
Pts.	9	17N	4E

Sale Name:

Warm Mosquito Ton

Estimated Auction: Spring 2024
 Location: 8 miles W of New Meadows, ID
 Drainages: Weiser
 Class I Streams: No
 Class II Streams: Yes
 Silvicultural Prescription: Shelterwood
 Harvest System: Ground based

APPROXIMATE
 ACREAGE: 515 acres VOLUME: 4,695 MBF
 26,573 Tons

Timber Sale Legal Description

Subsection	Section	Township	Range
Pts. SWNE, Pts. Govt. Lots 3&4, Pts. S2NW, Pts. SW, Pts. N2SE, Pts. SWSE	2	18N	1W
Pts. S2NE, Pts. N2SE	16	19N	01W
Pts. NE, Pts. S2NW, Pts. N2SW, Pts. SESW, Pts. SE	15	19N	1W

Supervisory Area Totals: Payette Lakes

Additional Small Volume Sales: 178 MBF
 Supervisory Area Acres: 2,003 acres
 Supervisory Area Total Sawlog: 21,000 MBF
 Supervisory Area Total Sawlog (Ton): 117,852 Tons

IDAHO DEPARTMENT OF LANDS FISCAL YEAR 2024 TIMBER SALE PLAN

July 1, 2023 - June 30, 2024

**Southwest
Supervisory Area**

Sale Name:

Murray Scriver

Estimated Auction: Summer 2023
 Location: 5 miles SE of Smiths Ferry, ID
 Drainages: South Fork Murray Creek
 Class I Streams: No
 Class II Streams: Yes
 Silvicultural Prescription: Clearcut
 Harvest System: Tractor/Jammer

	APPROXIMATE	
ACREAGE:		VOLUME:
306 acres		4,345 MBF

Timber Sale Legal Description

Subsection	Section	Township	Range
Pts.	1, 2, 11, 12	10N	03E
Pts.	36	11N	03E

Sale Name:

Upper Shrits

Estimated Auction: Spring 2024
 Location: 5 miles NW of Banks, ID
 Drainages: Shirts Creek
 Class I Streams: No
 Class II Streams: Yes
 Silvicultural Prescription: Clearcut, Single Tree Select
 Harvest System: Tractor/Jammer

	APPROXIMATE	
ACREAGE:		VOLUME:
779 acres		7,070 MBF

Timber Sale Legal Description

Subsection	Section	Township	Range
Pts.	2, 3, 4, 9,	09N	02E

IDAHO DEPARTMENT OF LANDS FISCAL YEAR 2024 TIMBER SALE PLAN

July 1, 2023 - June 30, 2024

**Southwest
Supervisory Area**

Sale Name:

Wild Howell

Estimated Auction: Summer 2023
 Location: 5 miles NW of Crouch, ID
 Drainages: Howell Creek
 Class I Streams: No
 Class II Streams: Yes
 Silvicultural Prescription: Clearcut
 Harvest System: Tractor/Jammer

APPROXIMATE
 ACREAGE: 427 acres VOLUME: 4,590 MBF

Subsection	Timber Sale Legal Description	Section	Township	Range
Pts.		1, 2, 3, 4	09N	03E
Pts.		28, 33, 34,	10N	03E

Draft

Supervisory Area Totals: Southwest

Supervisory Area Acres: 1,512 acres
 Supervisory Area Total Sawlog: 16,005 MBF

IDAHO DEPARTMENT OF LANDS FISCAL YEAR 2024 TIMBER SALE PLAN

July 1, 2023 - June 30, 2024

**Eastern Idaho
Supervisory Area**

Sale Name:

Frenchys Hollow Ton

Estimated Auction: Spring 2024
 Location: 20 miles east of Downey, ID
 Drainages: Walker Gulch
 Class I Streams: Yes
 Class II Streams: Yes
 Silvicultural Prescription: Overstory Removal
 Harvest System: Ground Based

	APPROXIMATE	
ACREAGE:		VOLUME:
700 acres		5,000 MBF
		32,500 Tons

Subsection	Timber Sale Legal Description	Section	Township	Range
Pts. SESE		35	10S	38E
Pts.		36	10S	38E
Pts. E2		11	11S	38E
Pts.		13	11S	38E
Pts. NENE		14	11S	38E
Pts.		2	11S	38E
Pts.		17	11S	39E
Pts. S2N2, Pts. S2		18	11S	39E
Pts.		19	11S	39E
Pts.		20	11S	39E
Pts.		29	11S	39E

Supervisory Area Totals: Eastern Idaho

Supervisory Area Acres: 700 acres
 Supervisory Area Total Sawlog: 5,000 MBF
 Supervisory Area Total Sawlog (Ton): 32,500 Tons

Statewide Totals

Grand Total Acres: 21,332 acres
 Grand Total Sawlog: 331,111 MBF
 Grand Total Sawlog (Ton): 150,352 Tons
 Grand Total Cedar Poles: 24,695 Cedar Poles

**TRUST LAND MANAGEMENT DIVISION
TIMBER MANAGEMENT BUREAU**
3284 W. Industrial Loop
Coeur d'Alene, ID 83815
Phone (208) 769-1525
Fax (208) 769-1524



DUSTIN T. MILLER, DIRECTOR
EQUAL OPPORTUNITY EMPLOYER

STATE BOARD OF LAND COMMISSIONERS

*Brad Little, Governor
Phil McGrane, Secretary of State
Raúl Labrador, Attorney General
Brandon D Woolf, State Controller
Debbie Critchfield, Sup't of Public Instruction*

January 18, 2023

Idaho Forest Products Industry:

The Idaho Department of Lands' fiscal year (FY) 2024 [proposed timber sale plan](#) has been posted on the department's timber sale website. The plan will be presented to the Idaho State Board of Land Commissioners for their approval at the April 18th meeting.

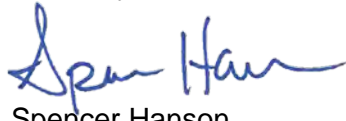
If you would like to comment or express your opinion regarding the fiscal year 2024 sale plan, please send, preferably via email, a signed copy of your comments to:

Spencer Hanson
shanson@idl.idaho.gov

You may address your comments to Dustin T. Miller, IDL Director, or to Spencer Hanson, Timber Sale Program Manager. If you prefer to send comments to the Director, please copy me so that all written comments are included in the package submitted to the Land Board. All comments will be forwarded to the Director and included in the FY 2024 timber sale plan package submitted to the Land Board.

Public comments to the IDL Timber Sale Plan are not always positive so supportive comments are always appreciated.

Sincerely,



Spencer Hanson
Program Manager – Timber Sales
Idaho Department of Lands
3284 West Industrial Loop
Coeur d'Alene, ID 83815
(208) 666-8609



ASSOCIATED LOGGING CONTRACTORS, INC.

P. O. Box 671 | Coeur d'Alene, Idaho 83816
Phone 208-667-6473 | alc@idahologgers.com
www.idahologgers.com

March 31, 2023

To: Jeremy Shawver
Lands Section Manager – Timber Sales and Contract Admin
Idaho Department of Lands
3284 West Industrial Loop
Coeur d'Alene, ID 83815

Jeremy,

Please accept this letter of support for the Idaho Department of Lands Proposed Fiscal Year 2024 Timber Sales Plan.

The Associated Logging Contractors of Idaho is a non-profit trade organization whose 518 member businesses are professional timber harvesters and trucking companies located across the state. Our members live and work in Idaho's forested communities and are neighbors to the lands managed by Idaho Dept. of Lands (IDL). We support IDL's sustainable harvesting of the state's timber lands which meets the mandate to provide returns to the various beneficiaries of those endowment lands.

We appreciate working with staff at IDL and with the Land Board members and their staff and look forward to doing our part to achieve the goals withing the proposed 2024 Timber Sales Plan.

Thank you for this opportunity to comment.

Sincerely,

Shawn Keough
Executive Director



Spencer Hanson
Timber Sale Program Manager
Idaho Department of Lands
3284 West Industrial Loop
Coeur d'Alene, ID 83815

March 3, 2023

Dear Mr. Hanson,

Alta Forest Products would like to express our support of the Idaho Department of Lands Proposed FY 2024 Timber Sale Plan. It is encouraging to see the consistent execution of forest management and advertisement of forest products that the IDL provides. The FY 2024 Proposed Plan supports the mission of the IDL and generates valuable return to the Endowment.

Alta Forest Products appreciates the IDL's mission and the quality work performed by its dedicated staff. We are committed to supporting the IDL timber sale program into the future and we appreciate all opportunities to share feedback and suggestions.

We are excited about the progress made with the Delivered Products timber sale program and look forward to participating in this program in the near future. We are confident these sales will maximize competition and eventual return to the endowment. Lastly, we appreciate all efforts made to bundle sale packages which are appealing to multiple bidders, especially considering species composition and size.

The IDL timber sale program provides a critical timber supply to our local forest industry. We see the importance of this sustainable fiber supply to our own operations and are grateful for future opportunities to work together. Thank you for the opportunity to provide comments on the Proposed FY 2024 Timber Sale Plan. We wish you and all IDL staff a successful year.

Sincerely,

A handwritten signature in blue ink, appearing to read "Luke Machtolf".

Luke Machtolf, CF
Procurement Forester

A handwritten signature in blue ink, appearing to read "Eric Oien".

Eric Oien
Director of Procurement



STIMSON LUMBER COMPANY

7600 Mineral Drive, Ste. 400

Coeur d'Alene, ID 83815

(208) 765-1414

(208) 772-5636

Dustin T. Miller
Director
Idaho Department of Lands
PO Box 83720
Boise, ID 83702

February 7, 2023

Dear Director Miller:

Stimson is a privately held forest products company that operates mills and owns lands in Oregon, Washington, Montana, and Idaho. The availability of timber through the Idaho Department of Lands (IDL) Timber Sale program is very important to us and we appreciate the opportunity to comment on the Fiscal Year 2024 proposed State Timber Sale Plan.

Stimson supports the active management of Idaho's Endowment Timber lands. The monies received from active timber management on these lands are crucial to the beneficiaries of the Endowment Trust Lands. Stimson fully supports the FY 2024 proposed State Timber Sale Plan. The continued management of the State's Endowment lands provides a much needed supply of raw material for the three saw mills that Stimson owns and operates in the state of Idaho.

Once again, I would like to thank you for the opportunity to comment on the Fiscal Year 2024 State Timber Sale Plan.

Sincerely,

A handwritten signature in blue ink, appearing to read 'David Brummer', is written over a light blue horizontal line.

David Brummer
Regional Procurement and Marketing Manager
Stimson Lumber Company



P.O. Box 108 MOYIE SPRINGS, ID 83845 IDFG.COM 208.267.3166

April 11, 2023

Spencer Hanson
Timber Sale Program Manager
Idaho Dept. of Lands
3284 W. Industrial Loop
Coeur d' Alene, ID.
83815

Re: Idaho Dept. of Lands Fiscal Year 2024 Timber Sale Program

Dear Spencer,

On behalf of Idaho Forest Group, I offer the following comments to the proposed FY '24 IDL timber sale program:

IFG Timber and Idaho Forest Group are currently the largest holder of Idaho Dept. of Lands timber sale contracts. We continue to count on the success of the IDL timber sale program to fulfill a large portion of our agency timber portfolio. The Idaho Dept. of Lands manages their timber lands in such an efficient and cost effective manner that positive revenues are generated to fund Idaho's school endowment. Also, forest health, growth and yield are paramount in the silvicultural objectives on these lands. We view our relationship as one of mutual respect: for the job of forestry that IDL foresters perform as well as for the moneys we bid and the services we and our contractors provide.

In looking at the 4 Northern Supervisory areas: Priest Lake, Pend Oreille, Mica and St. Joe, it continues to be gratifying to see that the sale volume and targets set are increasing in both pace and scale. The target for the F.Y. '24 program for these supervisory areas appears to be approx. 2.50 MMBF higher when compared to the F.Y. '23 plan. On the Southern portion of the IDL wood-basket: Clearwater, Ponderosa, Maggie Creek and Payette Lakes supervisory areas, the situation is the same with FY'24 targets being modestly higher than FY '23 target levels. Spencer, this is and continues to be an outstanding performance of forest land management. It is why we support and applaud the agency for it's efforts towards healthier and more resilient forests in Idaho. Your entire forestry and support staff should be very proud. We wish the U.S. Forest Service with it's significantly larger land base would look to your methodologies for getting projects implemented. That is why we continue to be so supportive of the Good Neighbor program.

Both Idaho Forest Group with our facilities as well as our timber harvesting and hauling contractors depend on predictable harvest levels to maintain viability AND to make economic investments for the future. As a top lumber producer in Idaho, our employees and their families depend on your timber for our continued success and their continued employment. In the future as in the past, you have our assurance that should you need any assistance with your efforts to continue your success, we will be there for you.

As you are aware, our road building, logging and forest management contractors are all affiliated with the "Pro Logger" program and are LEAP certified. We continue to strive for professionalism in our forest management and hauling activities. We rely on these professionals to execute IDL contracts in a timely, orderly and professional manner. We feel that our relationship with the IDL continues to be paramount in our mutual success which can be measured by a high level of generated revenues, efficient completion of projects and continuous and predictable harvest levels.

Thank you very much for the opportunity to comment on the FY '24 IDL proposed timber sale program.

Sincerely,

A handwritten signature in black ink, appearing to read "Timothy P. Dougherty", written over a white background.

Timothy P. Dougherty - Agency Resource Manager