



NOTICE OF EXTENDED CLOSED FIRE SEASON

**IDAHO DEPARTMENT OF LANDS
Coeur d'Alene, Idaho
October 18, 2022**

Continuing dry conditions without appreciable predicted precipitation, higher than average daytime temperatures, and limited firefighting staff has prompted fire managers to request an extension of the period required under Idaho Code requiring burn permits for burning activities on lands within the Southern Idaho Timber Protection Association (SITPA) fire protective district.

NOW THEREFORE, under the authority vested in me under Section 38-115, Idaho Code, and the Rules Pertaining to Forest Fire Protection, and in consultation with the fire wardens of the forest protective districts, I do hereby extend the period of closed fire season for the Southern Idaho Timber Protection Association (SITPA) fire protective district.

Idaho law (38-115) requires any person living outside city limits anywhere in Idaho who plans to burn anything – including crop residue burning and excluding recreational campfires – during closed fire season to obtain a fire safety burn permit.

Fire safety burn permits can be obtained online at <http://www.burnpermits.idaho.gov> or in person at IDL offices statewide. The fire safety burn permit is free of charge and good for 10 days after it is issued. Permits issued through the self-service web site are available seven days a week, issued immediately, and valid immediately.

Residents are also encouraged to contact their local city or rural fire department before burning as some incorporated cities and towns may require their own burn permit. IDL will not issue fire safety burn permits within districts where local burn bans are in effect. Additionally, residents should contact the Idaho Department of Environmental Quality (DEQ) or the Nez Perce Tribe or Coeur d'Alene Tribe for burn restriction information for air quality.

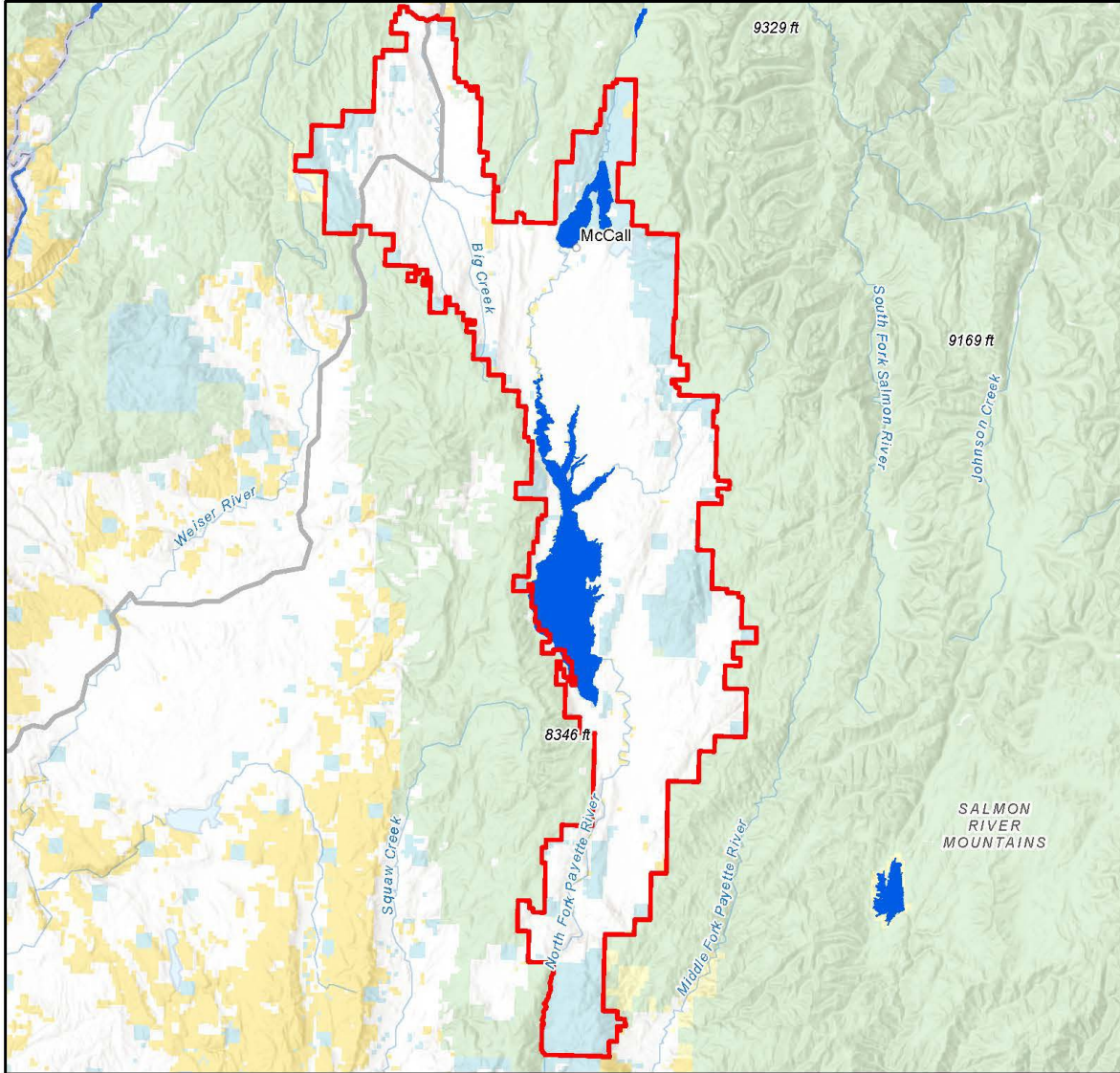
This extension of the closed fire season shall be in full force and in effect from 11:59 PM Tuesday, October 18, 2022, until 11:59 PM Sunday, October 30, or until this order is otherwise rescinded.


A handwritten signature in blue ink that reads "Craig Foss".

**Craig Foss, Idaho State Forester
Idaho Department of Lands**



Southern Idaho Timber Protective Association



 The surface management status should be used as a general guide only. Official lands records at the Bureau of Land Management (BLM) and other State and County offices should be checked for up-to-date information regarding any specific tract of lands.

Date Created:
10/18/2022

No warranty is made by the Idaho Department of Lands (IDL) as to the accuracy, reliability, or completeness of these datasets for individual use or aggregation with other datasets.

Spatial Reference
Name: WGS 1984 Web Mercator Auxiliary Sphere

0 2.5 5 10 15 Miles

