

STATE BOARD OF LAND COMMISSIONERS

September 20, 2022

Department Report

Subject

Fire Season Update

Background

As of September 13, Emergency Fire Suppression expenditures are estimated to be \$18,740,000. The Suppression Account will recover an estimated \$5,900,000 of reimbursable costs, for a net obligation of \$12,840,000. The total obligation includes the 2022 contracted aircraft costs and prepositioned contract engines to assist with resource scarcity. These engines are assigned across the state to boost initial attack resources.

Discussion

On September 8, the Prospect fire was detected 23 miles NNE of Moscow. It is approximately 286 acres in logging slash and heavy timber. The North Idaho Type 3 Incident Management Team 2 began managing the fire September 5. It is now 100 percent contained and being managed by the local district.

As shown by the table below, fire occurrence to date for 2022 is 90 percent of the 20-year average, while the acres burned is 16 percent of the 20-year average.

Fire Season Comparison to Date

Number of Fires				
Year	Human	Lightning	Total	Acres
2019	130	92	222	1263
2020	173	49	222	6020
2021	227	155	382	141,883
2022	112	134	246	3887
20 Yr. Average			272	24,599

Numbers in table are YTD for prior years and YTD for the current year.

August was much warmer and drier than average. Fire size and frequency has been increasing throughout IDL protection. Nationally resources are stretched thin and resource competition remains high. Idaho is currently in very high to extreme fire danger. Some rain is forecasted throughout the next week. Fires have been burning actively, although the shortening days, cooler nights, and smoke shading are assisting firefighting efforts.

Significant Fires Outside of IDL Protection

Kootenai River Complex

Agency/Management: Idaho Panhandle National Forest (USFS)

General Location: 7 miles NW of Bonners Ferry, ID

Acres burned: 20,742 acres, 79 percent completed

Ross Fork Fire

Agency/Management: Sawtooth National Forest (USFS)

General Location: 2 miles West of Smiley Creek, ID

Acres burned: 37,731 acres, 26 percent completed

Williams Creek Fire

Agency/Management: Nez Perce-Clearwater National Forests (USFS)

General Location: 5 miles West of Orogrande, ID

Acres burned: 15,773 acres, 31 percent completed

Four Corners Fire

Agency/Management: Payette National Forest (USFS)

General Location: 6 miles West of Cascade, ID

Acres burned: 13,725 acres, 96 percent contained

Moose Fire

Agency/Management: Salmon-Challis National Forest (USFS)

General Location: 17 miles North of Salmon, ID

Acres burned: 130,077 acres, 47 percent contained

Total Acres Burned by Ownership	
9/14/2022	
Surface Owner	Acres
Idaho Department of Lands	2414
Other State Lands	104
Private	20,541
Bureau of Land Management	30,124
Other Federal	6888
U.S. Forest Service	287,800
Total Acres	347,871

Only fires with perimeters in the Fire Enterprise Geospatial Portal and the IDL Lands Resource Manager system have been included in the analysis.

Fire Deficiency Warrant Spending - 2022 Fire Season YTD		
Category	Estimated Costs	Notes
Aviation Resources	\$3,000,000	4 SEATS, 2 Fire Bosses, 2 Type 2 Helicopters
Preposition Engines	\$385,000	5 Contract engines to boost IA statewide, 8/1/2022 – 9/15/2022
IDL Team Fires	\$4,400,000	Lions Roar (PLS), Quinn (CMS), Prospect (PDS)
IDL Non-Team Fires	\$2,325,000	IDL/Assn fires including pre-positioning
Other Suppression	\$2,730,000	Coeur d'Alene Cache, Dispatch
Other Suppression	\$5,900,000	Reimbursable (IDL and Fire Department resources supporting non-IDL fires)
Total Estimate YTD	\$18,740,000	

Attachments

1. Significant Fires Throughout Idaho
2. Current Fire Restrictions Map

2022 Wildland Fires in Idaho

9/15/2022

- | | |
|--|---|
| Month | Surface Management |
| ■ September | ■ Idaho Endowment Lands |
| ■ August | ■ Other State |
| ■ July | ■ Private |
| ■ June | ■ U.S. Forest Service |
| | ■ Bureau of Land Management |
| | ■ Tribal Lands |
| | ■ Other Federal |



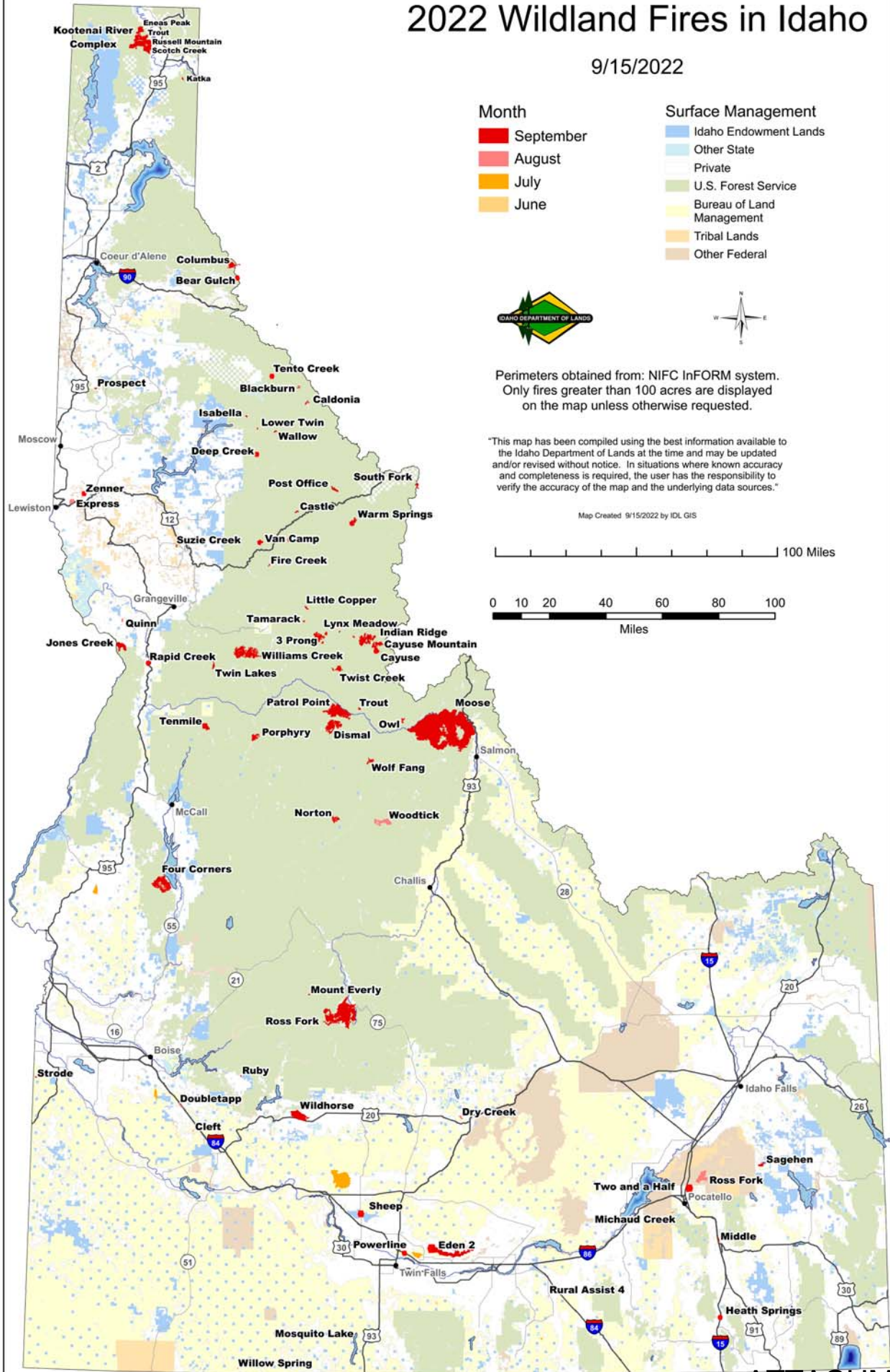
Perimeters obtained from: NIFC InFORM system.
Only fires greater than 100 acres are displayed on the map unless otherwise requested.

"This map has been compiled using the best information available to the Idaho Department of Lands at the time and may be updated and/or revised without notice. In situations where known accuracy and completeness is required, the user has the responsibility to verify the accuracy of the map and the underlying data sources."

Map Created 9/15/2022 by IDL GIS

0 10 20 40 60 80 100 Miles

0 10 20 40 60 80 100 Miles



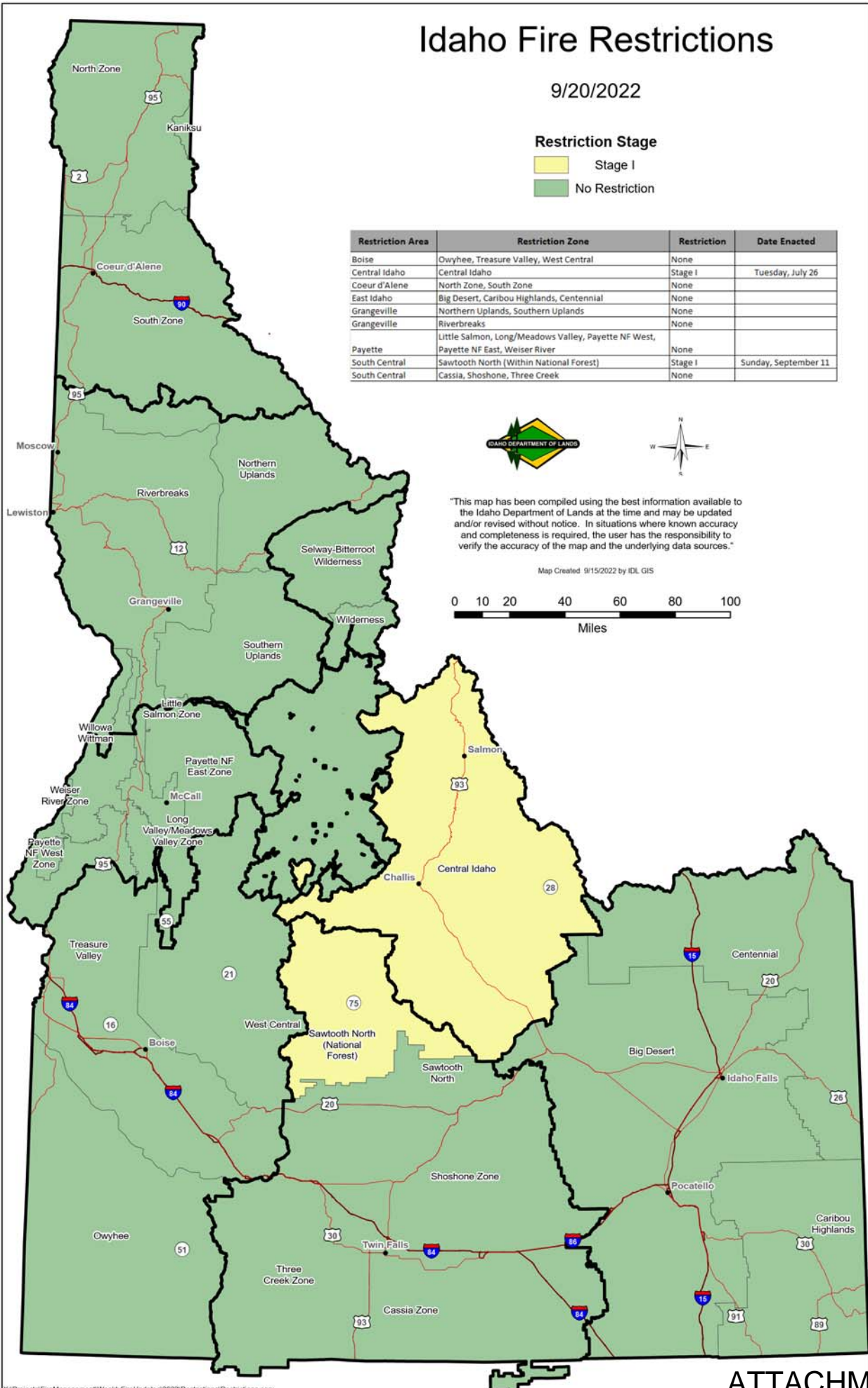
Idaho Fire Restrictions

9/20/2022

Restriction Stage

- Stage I
- No Restriction

Restriction Area	Restriction Zone	Restriction	Date Enacted
Boise	Owyhee, Treasure Valley, West Central	None	
Central Idaho	Central Idaho	Stage I	Tuesday, July 26
Coeur d'Alene	North Zone, South Zone	None	
East Idaho	Big Desert, Caribou Highlands, Centennial	None	
Grangeville	Northern Uplands, Southern Uplands	None	
Grangeville	Riverbreaks	None	
Payette	Little Salmon, Long/Meadows Valley, Payette NF West, Payette NF East, Weiser River	None	
South Central	Sawtooth North (Within National Forest)	Stage I	Sunday, September 11
South Central	Cassia, Shoshone, Three Creek	None	



"This map has been compiled using the best information available to the Idaho Department of Lands at the time and may be updated and/or revised without notice. In situations where known accuracy and completeness is required, the user has the responsibility to verify the accuracy of the map and the underlying data sources."

Map Created 9/15/2022 by IDL GIS

