

**STATE BOARD OF LAND COMMISSIONERS**

September 20, 2022

Trust Land Revenue

**Timber Sales**

During August 2022, the Department of Lands sold four timber sales at auction. One sale had competitive bidding. The net sale value represents 2% up bid over the appraised value. One endowment timber sale did not sell at auction. This was the third and final attempt for the salvage sale.

<b>TIMBER SALE AUCTIONS</b>								
Sale Name	Area	Sawlog MBF	Cedar Prod MBF	Pulp MBF	Appraised Net Value	Sale Net Value	Net \$/MBF	Purchaser
Goat Creek Salvage	SJ	5,760			\$ 192,333.00	\$ 192,333.00	\$33.39	Stimson Lumber Co
Middle Fork Cedar	PL	1,490			\$ 601,942.00	\$ 601,942.00	\$403.99	Stella-Jones Corporation
Deet Ton	PAY	990			\$ 225,114.44	\$ 272,576.40	\$275.33	Tamarack Mill LLC
Golden Yacht	POL	6,170			\$ 2,159,751.00	\$ 2,159,751.00	\$350.04	IFG Timber LLC
<b>Endowment</b>		<b>14,410</b>	<b>0</b>	<b>0</b>	<b>\$ 3,179,140.44</b>	<b>\$ 3,226,602.40</b>	<b>\$223.91</b>	

<b>PROPOSED TIMBER SALES FOR AUCTION</b>				
Sale Name	Volume MBF	Advertised Net Value	Area	Estimated Auction Date
<b>North Operations</b>				
Powder Brush	7,790	\$2,117,195.00	Ponderosa	9/8/2022
Last Teakean Cedar	9,050	\$3,655,072.00	Ponderosa	9/21/2022
Second Goat Cedar	12,725	\$3,406,908.00	St. Joe	9/22/2022
<b>TOTALS</b>	<b>29,565</b>	<b>\$9,179,175.00</b>		
<b>South Operations</b>				
Golden Glen	4,885	\$1,501,603.00	Maggie Creek	9/14/2022
Ove Dent OSR	3,225	\$1,142,902.50	Clearwater	9/29/2022
<b>TOTALS</b>	<b>8,110</b>	<b>\$2,644,505.50</b>		

<b>VOLUME UNDER CONTRACT as of August 31, 2022</b>				
	Public School	Pooled	Total	3 Year Avg.
Active Contracts			180	177
Total Residual MBF Equivalent	315,591	190,300	505,891	548,793
Estimated residual value	\$89,385,180	\$52,498,827	\$141,884,007	\$143,023,562
Residual Value (\$/MBF)	\$283.23	\$275.87	\$280.46	\$260.61

TIMBER HARVEST RECEIPTS										
August			FY to date			September Projected				
Stumpage		Interest		Harvest Receipts		Stumpage		Interest		
Public School	\$	5,719,348.32	\$	616,149.51	\$	10,969,704.66	\$	4,878,673.30	\$	590,675.56
Pooled	\$	3,702,159.26	\$	436,862.40	\$	6,164,628.46	\$	3,993,877.42	\$	400,303.96
General Fund	\$	192.74	\$	44.98	\$	239.00	\$	1.65	\$	0.00
<b>TOTALS</b>	\$	<b>9,421,700.32</b>	\$	<b>1,053,056.89</b>	\$	<b>17,134,572.12</b>	\$	<b>8,872,552.37</b>	\$	<b>990,979.52</b>

Status of FY 2022 Timber Sale Program						
	MBF Sawlog			Number Poles		
	Public School	Pooled	All Endowments	Public School	Pooled	All Endowments
Sold as of August 31, 2022	185,424	93,141	278,565	25,993	17,886	43,879
Currently Advertised	0	4,885	4,885	0	0	0
In Review	19,170	0	19,170	2,500	0	2,500
Did Not Sell*	4,430	0	4,430	0	0	0
<b>TOTALS</b>	<b>209,024</b>	<b>98,026</b>	<b>307,050</b>	<b>28,493</b>	<b>17,886</b>	<b>46,379</b>
FY-2022 Sales Plan			311,195			20,600
Percent to Date			99%			225%

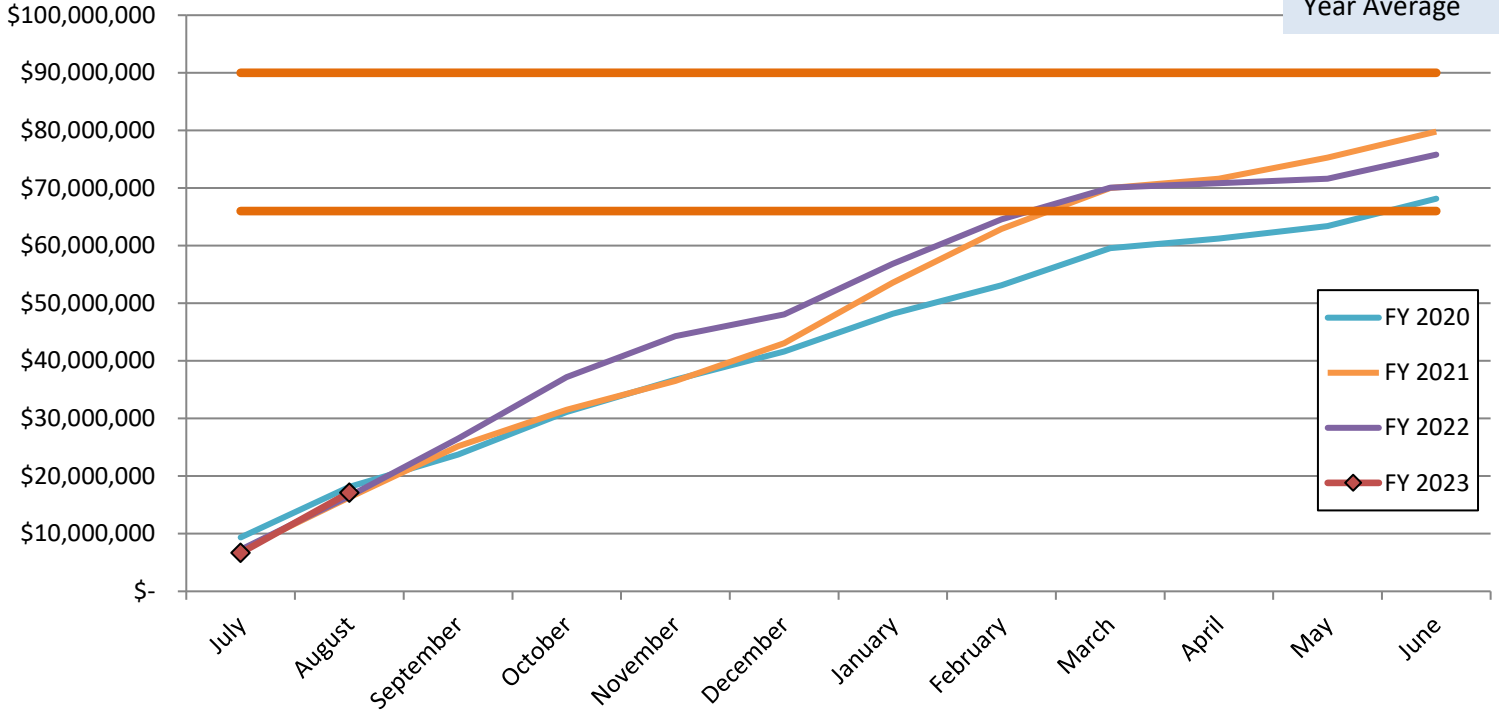
\* After three attempts at auction.

Status of FY 2023 Timber Sale Program						
	MBF Sawlog			Number Poles		
	Public School	Pooled	All Endowments	Public School	Pooled	All Endowments
Sold as of August 31, 2022	6,835	1,304	8,139	0	0	0
Currently Advertised	26,374	11,621	37,995	4,039	191	4,230
In Review	21,380	4,930	26,310	150	510	660
Did Not Sell*	0	0	0	0	0	0
<b>TOTALS</b>	<b>54,589</b>	<b>17,855</b>	<b>72,444</b>	<b>4,189</b>	<b>701</b>	<b>4,890</b>
FY-2023 Sales Plan			326,000			20,000
Percent to Date			22%			24%

\* After three attempts at auction.

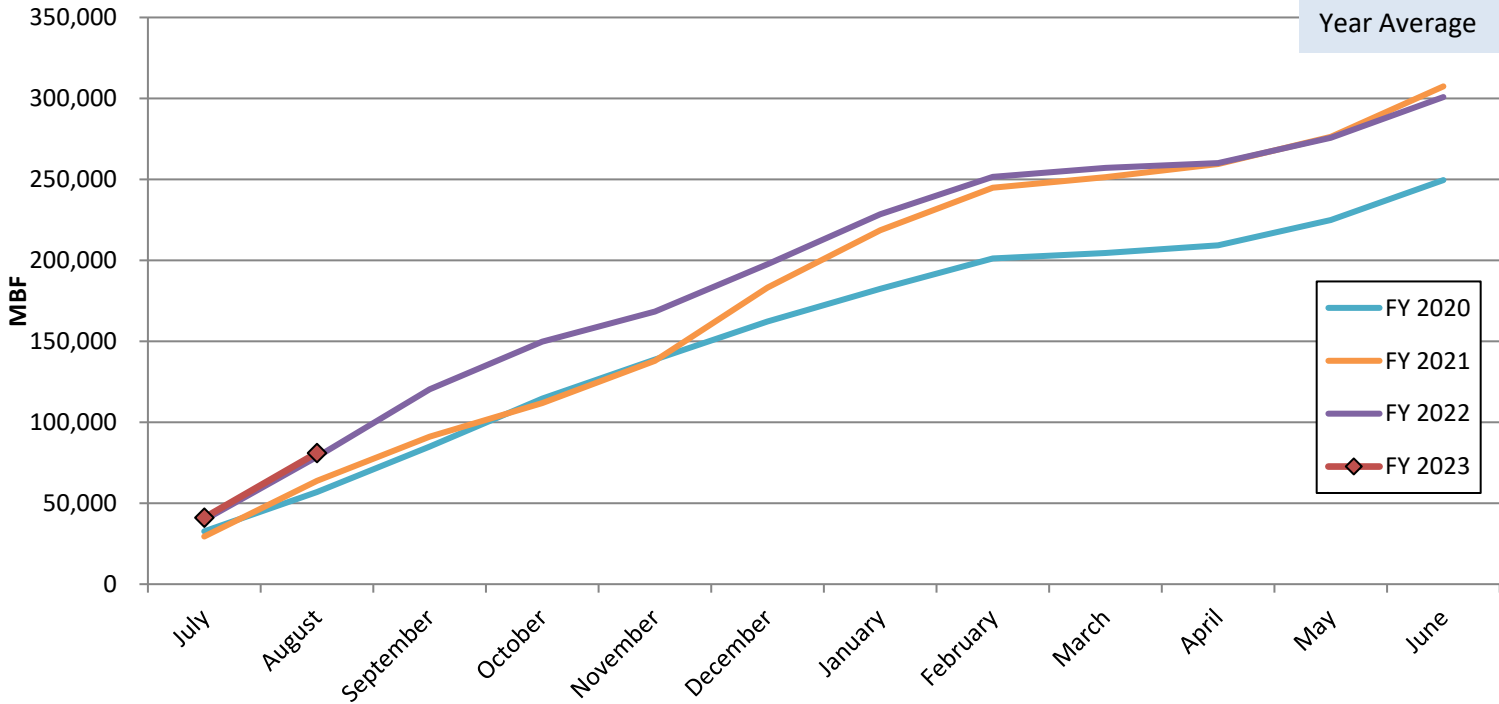
## Cumulative Harvest Receipts

Current FYTD is 101% of 3 Year Average



## Cumulative Harvest Volume

Current FYTD is 122% of 3 Year Average



## Monthly Lumber and Stumpage Price



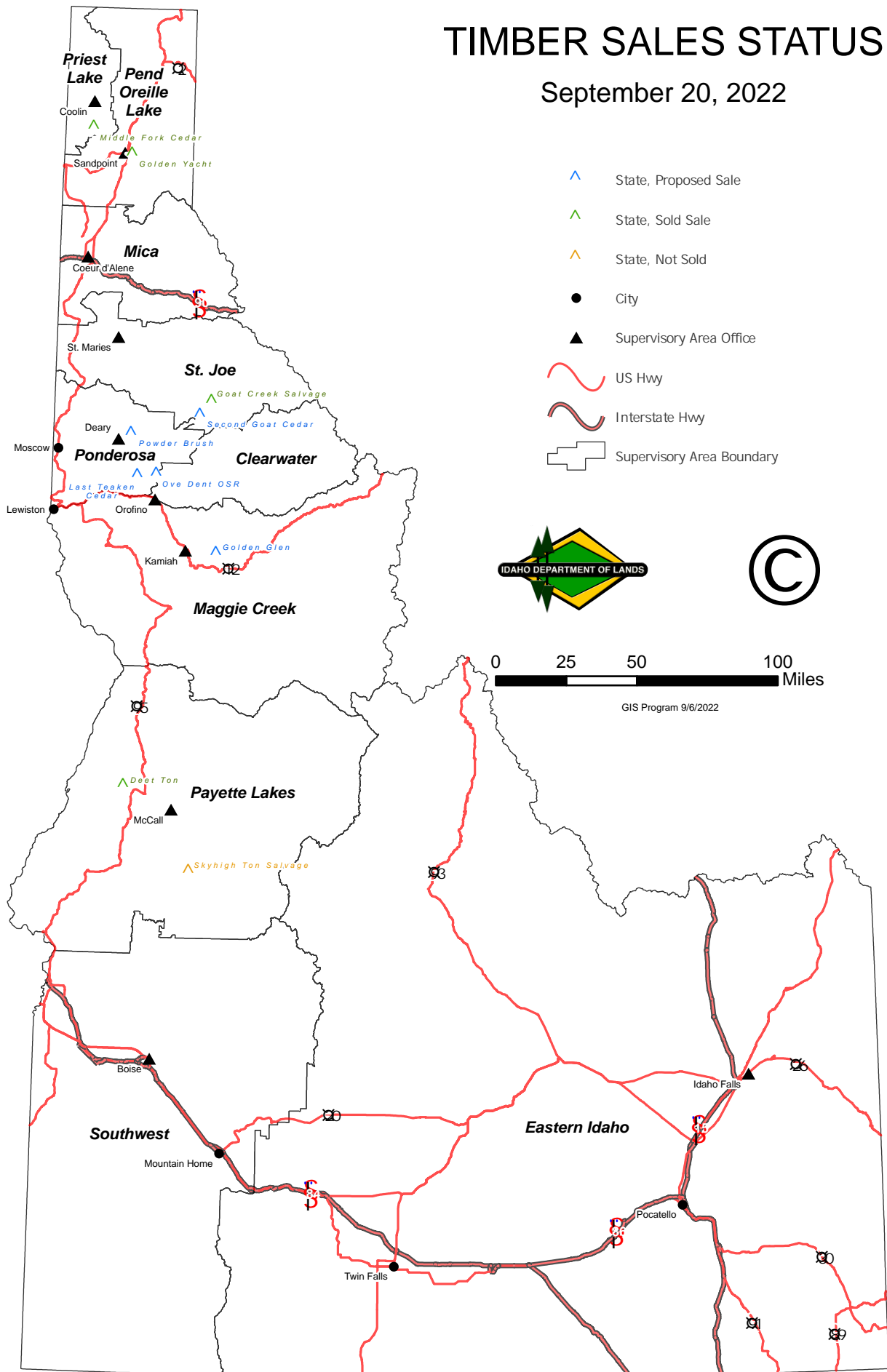
IDL Stumpage Price Line is a 6-month average of the net sale price.

August 2022 6-month average price is \$312.33.

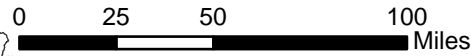
August 2021 6-month average price was \$270.14.

# TIMBER SALES STATUS

September 20, 2022



- ▲ State, Proposed Sale
- ▲ State, Sold Sale
- ▲ State, Not Sold
- City
- ▲ Supervisory Area Office
- US Hwy
- Interstate Hwy
- ⊞ Supervisory Area Boundary



GIS Program 9/6/2022