

STATE BOARD OF LAND COMMISSIONERS

August 16, 2022
Department Report

Subject

Fire Season Update

Background

As of August 9, Emergency Fire Suppression expenditures are estimated to be \$9,350,000. The Suppression Account will recover an estimated \$3,400,000 of reimbursable costs, for a net obligation of \$5,950,000. The total obligation includes the 2022 contracted aircraft costs and prepositioned contract engines to assist with resource scarcity. These engines are assigned across the state to boost initial attack resources.

Discussion

On August 8, the Lions Roar fire was detected 22 miles W of Bonners Ferry. It is approximately 40 acres, burning in logging slash and heavy timber. The North Idaho Type 3 Incident Management Team began managing the fire August 11. The fire is 0 percent contained.

As shown by the table below, fire occurrence to date for 2022 is 60 percent of the 20-year average, while the acres burned is less than 2 percent of the 20-year average.

Fire Season Comparison to Date

Number of Fires				
Year	Human	Lightning	Total	Acres
2019	98	50	148	1,210
2020	78	20	98	718
2021	174	111	285	115,970
2022	77	27	104	476
20 Yr. Average			172	20,673

Numbers in table are YTD for prior years and YTD for the current year.

July was much warmer and drier than average, and this pattern has continued into August. Fire size and frequency is increasing throughout IDL protection. An above average fire season is predicted for Idaho through the end of September. There are fire restrictions in areas of southern Idaho.

Significant Fires Outside of IDL Protection

Moose Fire

Agency/Management: United States Forest Service

General Location: 17 miles north of Salmon

Acres Burned: 74,470 acres, 21 percent contained

Total Acres Burned by Ownership	
8/10/2022	
Surface Owner	Acres
Idaho Department of Lands	1,063
Other State Lands	103
Private	7,800
Bureau of Land Management	25,982
Other Federal	59
U.S. Forest Service	79,081
Total Acres	114,088

Only fires with perimeters in the Fire Enterprise Geospatial Portal and the IDL Lands Resource Manager system have been included in the analysis.

Fire Deficiency Warrant Spending - 2022 Fire Season YTD		
Category	Estimated Costs	Notes
Aviation Resources	\$3,000,000.00	4 SEATS, 2 Fire Bosses, 2 Type 2 Helicopters
Preposition Engines	\$385,000.00	5 Contract engines statewide to boost IA, 8/1/2022 – 9/15/2022
IDL Non-Team Fires	\$1,015,000.00	IDL/Assn fires including pre-positioning
Other Suppression	\$1,550,000.00	Coeur d'Alene Cache, Dispatch
Other Suppression	\$3,400,000.00	Reimbursable (IDL and Fire Department resources supporting non-IDL fires)
Total Estimate YTD	\$9,350,000.00	

Attachments

1. Map–Significant Fires Throughout Idaho
2. Map–Current Fire Restrictions

2022 Wildland Fires in Idaho

8/8/2022

Month

- July
- June
- August

Surface Management

- Idaho Endowment Lands
- Other State
- Private
- U.S. Forest Service
- Bureau of Land Management
- Tribal Lands
- Other Federal



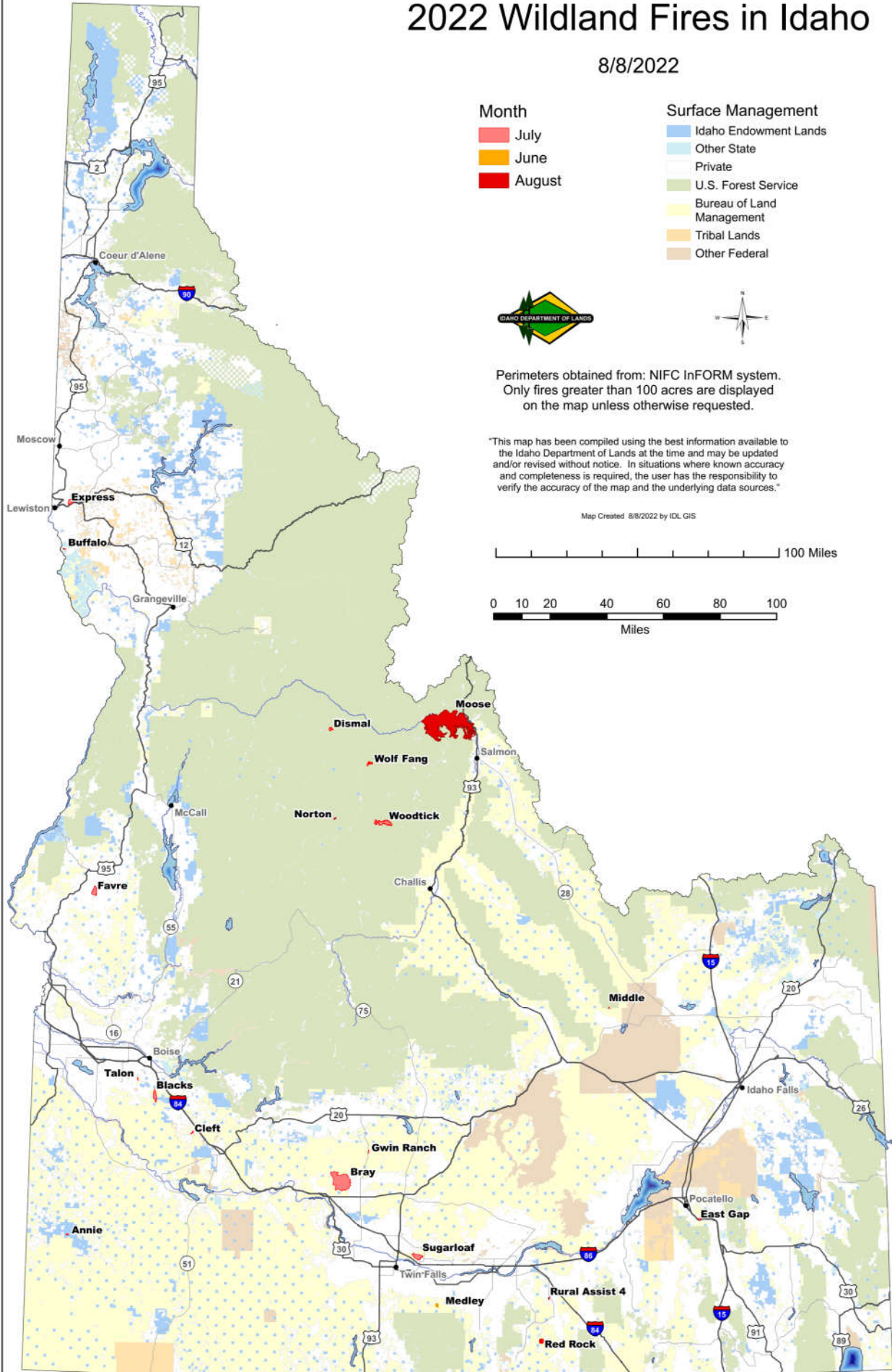
Perimeters obtained from: NIFC InFORM system.
Only fires greater than 100 acres are displayed on the map unless otherwise requested.

"This map has been compiled using the best information available to the Idaho Department of Lands at the time and may be updated and/or revised without notice. In situations where known accuracy and completeness is required, the user has the responsibility to verify the accuracy of the map and the underlying data sources."

Map Created 8/8/2022 by IDL GIS

0 10 20 40 60 80 100 Miles

0 10 20 40 60 80 100 Miles



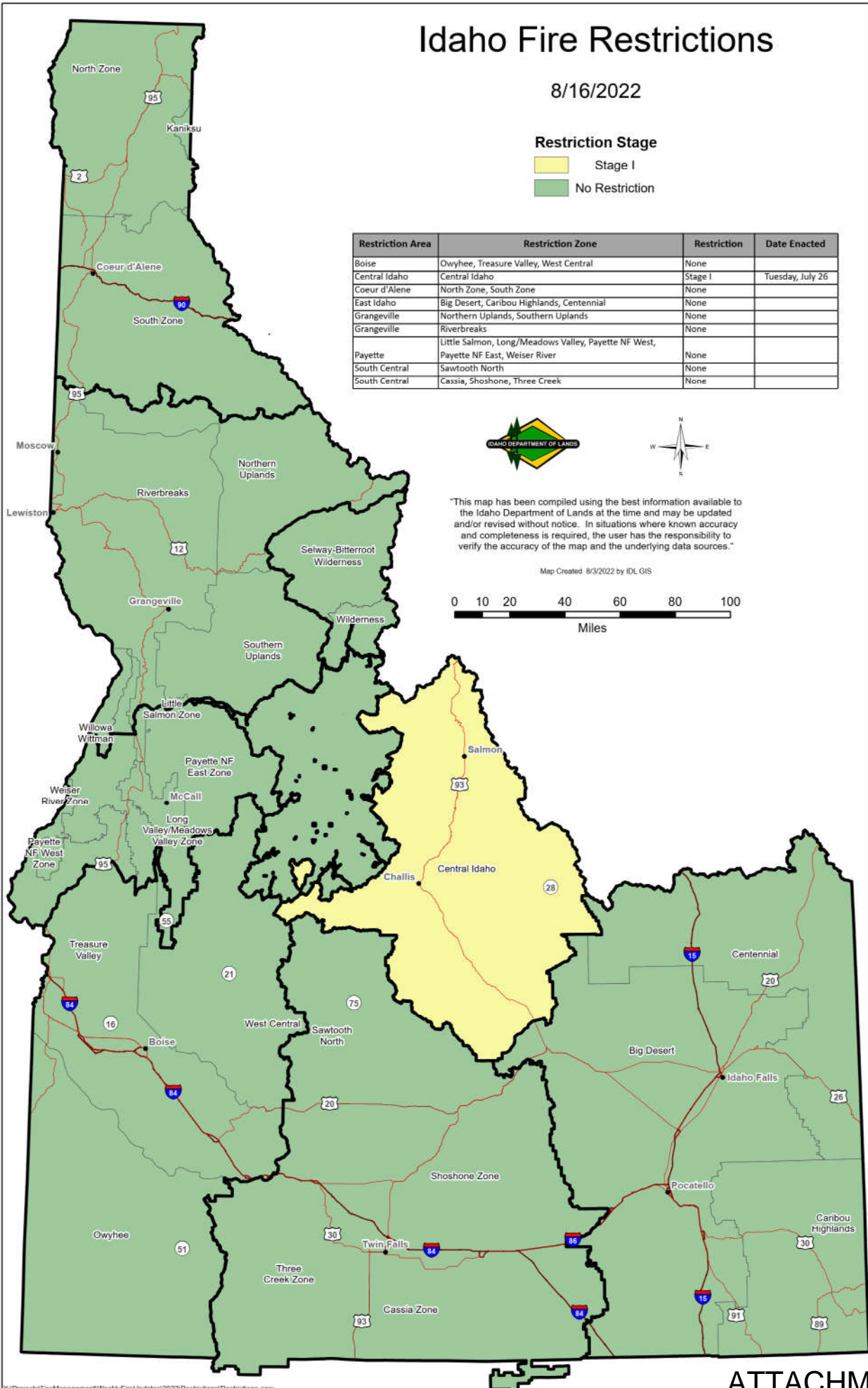
Idaho Fire Restrictions

8/16/2022

Restriction Stage

- Stage I
- No Restriction

Restriction Area	Restriction Zone	Restriction	Date Enacted
Boise	Owyhee, Treasure Valley, West Central	None	
Central Idaho	Central Idaho	Stage I	Tuesday, July 26
Coeur d'Alene	North Zone, South Zone	None	
East Idaho	Big Desert, Caribou Highlands, Centennial	None	
Grangeville	Northern Uplands, Southern Uplands	None	
Grangeville	Riverbreaks	None	
Payette	Little Salmon, Long/Meadows Valley, Payette NF West, Payette NF East, Weiser River	None	
South Central	Sawtooth North	None	
South Central	Cassia, Shoshone, Three Creek	None	



"This map has been compiled using the best information available to the Idaho Department of Lands at the time and may be updated and/or revised without notice. In situations where known accuracy and completeness is required, the user has the responsibility to verify the accuracy of the map and the underlying data sources."

Map Created: 8/3/2022 by IDL GIS

