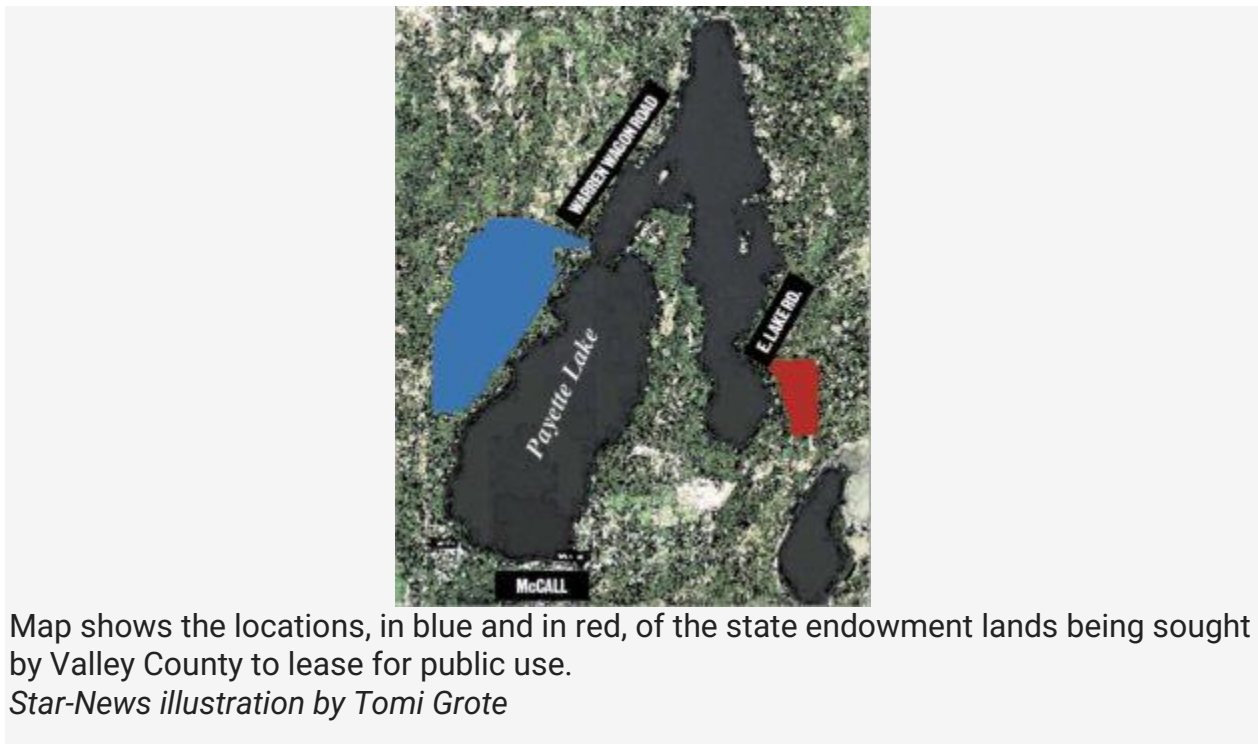


Star-News, 3-24-22

State endowment lands near McCall explained

When Idaho became a state, Congress gave it lands to be managed for the sole purpose of funding a specified list of beneficiaries, primarily public schools. This mandate was written into the Idaho Constitution. The lands will be managed “...in such manner as will secure the maximum long-term financial return to the institution to which (it is) granted.”



Map shows the locations, in blue and in red, of the state endowment lands being sought by Valley County to lease for public use.

Star-News illustration by Tomi Grote

Most of the money earned by these lands comes from logging, but the state also earns money through leases for grazing, farming, communication sites, renewable energy, recreation, mineral rights and residential/commercial real estate.

Endowment lands in the City of McCall and around Payette Lake in the McCall Impact Area amount to 5,357 acres, or about 3.5 times the size of Ponderosa State Park. There are a total of 183,411 acres of endowment land in the Payette Lakes Supervisory Area, which spans Adams, Boise, Gem, Idaho, Valley and Washington counties.

A plan adopted by the State Land Board last year could see nearly 400 acres near McCall developed within the next 20 years. The larger portion, including many of the lands fronting Payette Lake, do not have a timeline for development.

Publication Date: Thursday, March 24, 2022