


PAGE 1 OF 3

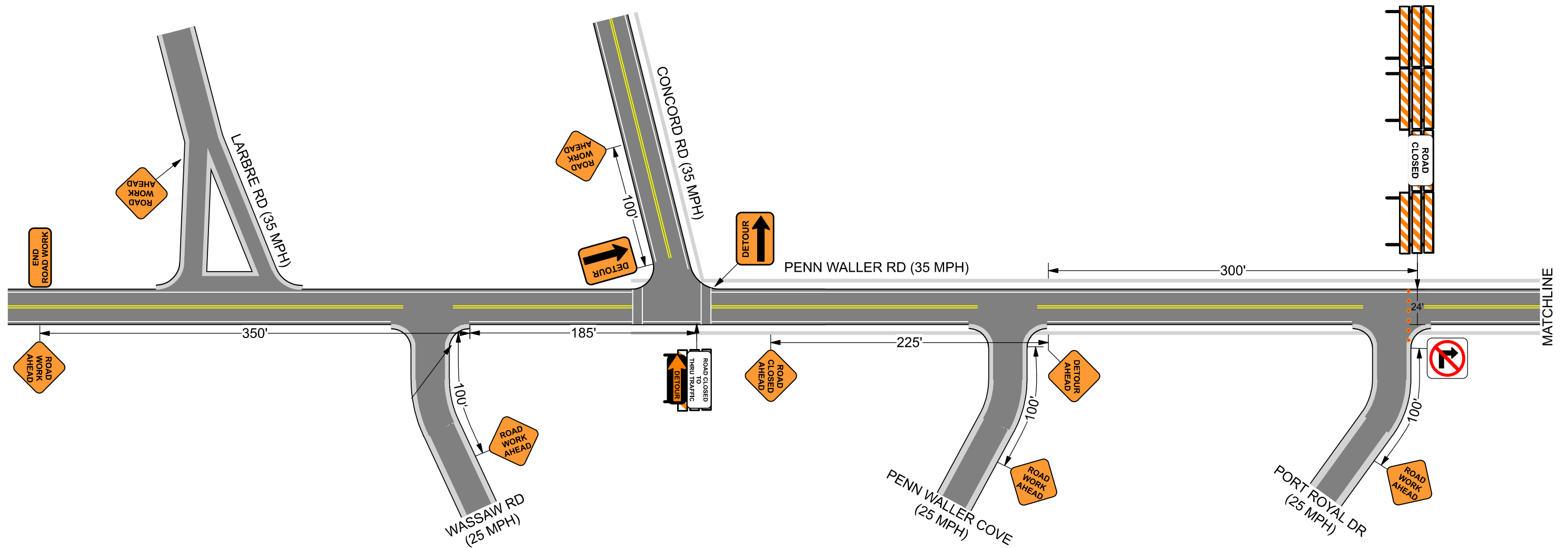
	<p>Date: 5/3/2024 Author: GRIFFIN GRADING & CONCRETE, LLC Project: Penn Waller Rd - Road Closure</p>
	<p>Comments: NOT TO SCALE</p>
	<p>All Plan Details According to Georgia MUTCD</p>
	<p>White Detour Signs Reference Same Signs OTHER PAGES</p>




	Date: 5/3/2024 Author: GRIFFIN GRADING & CONCRETE, LLC Project: Penn Waller Rd - Road Closure
	Comments: NOT TO SCALE
	All Plan Details According to Georgia MUTCD
	Cones for All Tapers and Tangents ●●●
	All Advance Warning Signs 36" Class Day and Night Use Installed Temporary Sign Stands

▲

Allow Access to Affected Driveways and Business Entrances Unless Otherwise Noted



	Date: 5/3/2024 Author: GRIFFIN GRADING & CONCRETE, LLC Project: Penn Waller Rd - Road Closure
	Comments: NOT TO SCALE
	All Plan Details According to Georgia MUTCD
	Cones for All Tapers and Tangents ●●●

All Advance Warning Signs 36" Class Day and Night Use Installed Temporary Sign Stands

Allow Access to Affected Driveways and Business Entrances Unless Otherwise Noted

