

Current Lake Okeechobee Floating Plant Treatments: May 2019

The photos and maps below illustrate treatment locations of Water Hyacinth and Water Lettuce within Lake Okeechobee. There is an increase in native vegetation growth due to low water levels. Floating plants can shade out, smother and displace new growth. Treatment is necessary to limit ecological damage to diverse native plant communities.





- 65 acres of Water Hyacinth
- 90 acres of Water Lettuce

Tin House Cove & Indian Prairie Marsh



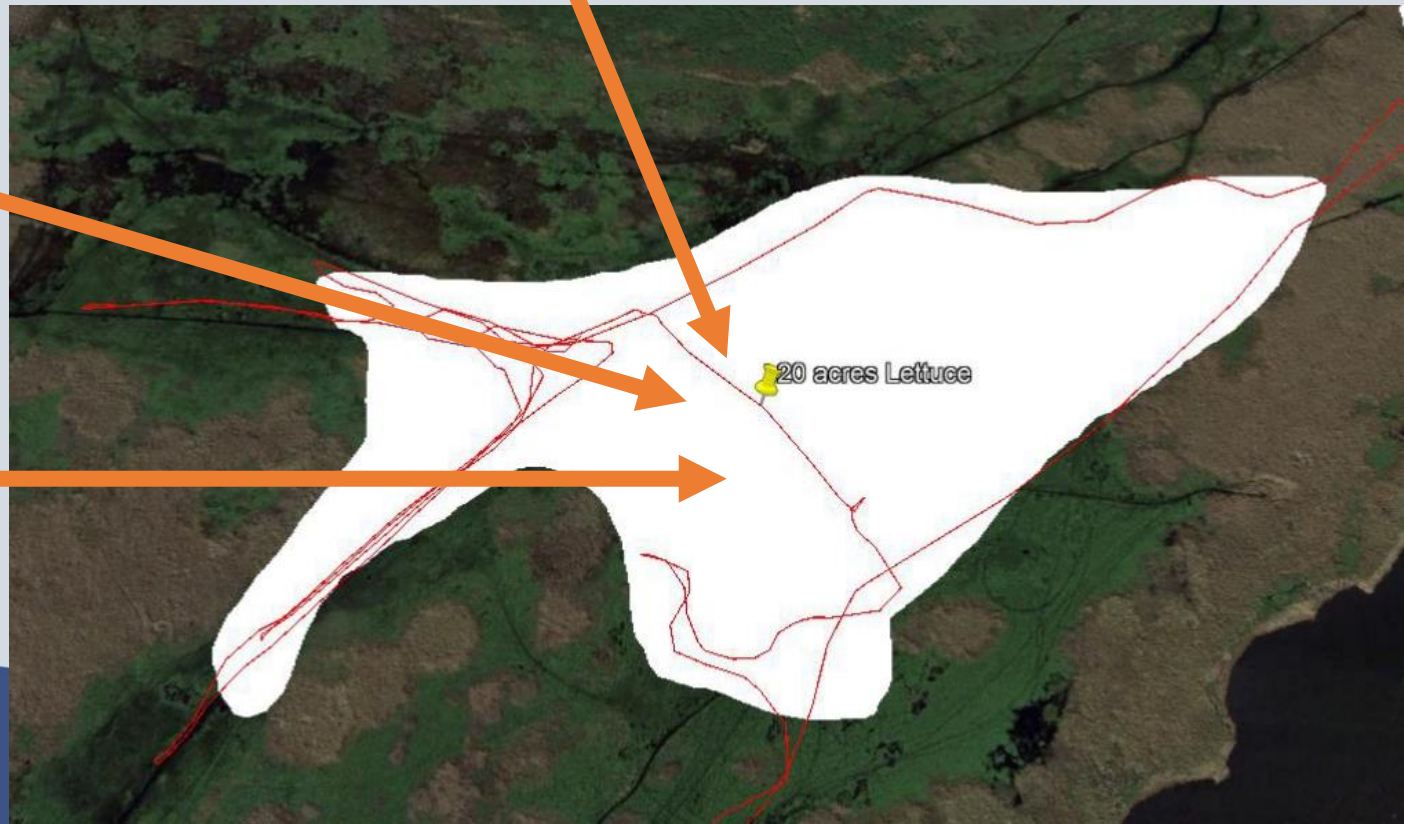
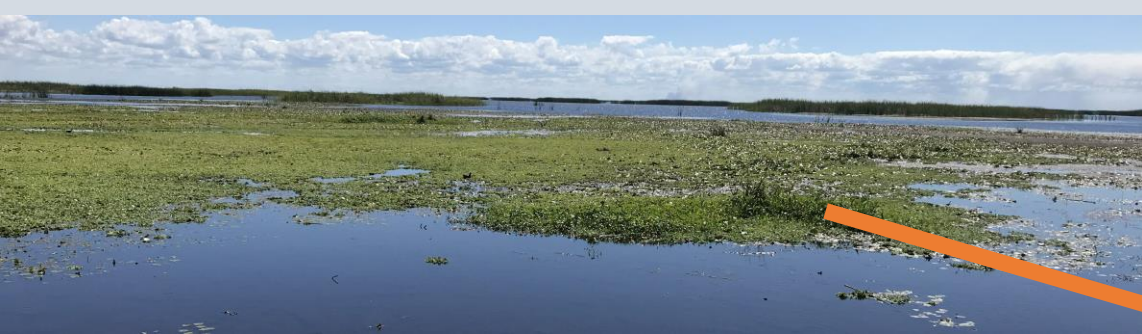


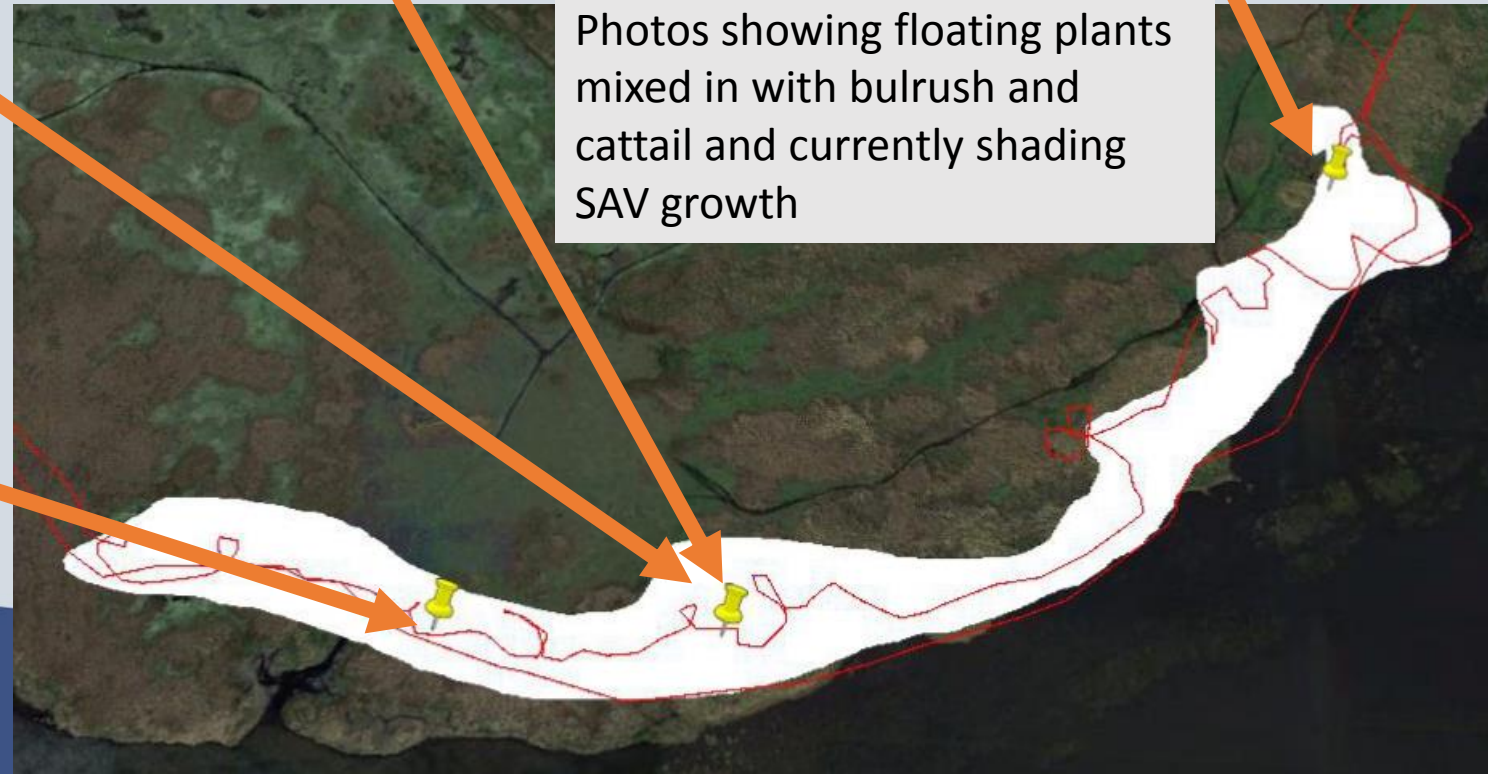
Top Left: Water Lettuce pushing out native Yellow Water Lillie and shading out Eel Grass.
Top Right: Eel Grass growing amongst lilies with water lettuce beginning to move in.











Photos showing floating plants mixed in with bulrush and cattail and currently shading SAV growth

Hyacinth in this region found in 3-10 foot bands scattered along the shoreline





Top Left: Mud having been uncovered and exposed has allowed native grasses to germinate. Bottom Right: Arrows indicate where Water Hyacinth mats cover recently exposed mud where native grasses will not be able to germinate.



Monkey Box





Top Right: Hyacinth choking out native Bulrush and shading out new growth. Bottom Left: Hyacinth forming mats and filling in around Bulrush. Bottom Right: Hyacinth and Lettuce forming mats, pushing into Cattail and Bulrush as well as shading both emergent and submerged vegetation during low water period. This time of year is most conducive to growth of these desirable natives which is being effected.





Top left: Shorelines in the area have 2-5 meter band of Hyacinth. Top Right: Mix of Hyacinth and Lettuce forming mat along the vegetation line not allowing native growth. Bottom Left: Due to falling water levels, treating the area may become increasingly difficult

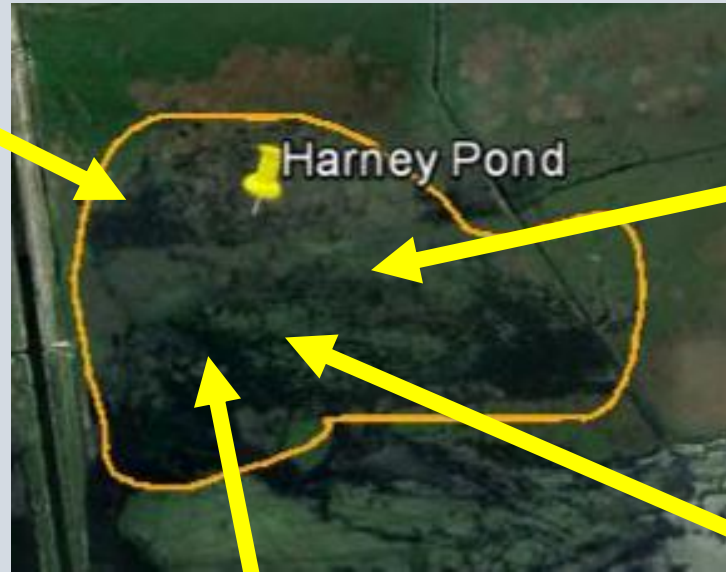


Harney Pond





Top left: Hyacinth mat forming around Cattail and other natives. Bottom photos: Hyacinth smothering native grasses





Eagle Bay and Kings Bar

Eagle Bay to Tin House Cove

4-22-19

Lake level- 11.5

Surveyors

Jessica Fair

Tyler Green

Brendon Hassion (FWC)

~300-350 Acres of Lettuce

~200 acres of Hyacinth

Survey area covered Eagle Bay Island, around Kings Bar to Tin House Cove.

Areas of concern are circled in polygons.

A major concern is that large hyacinth is pushing down and killing native bulrush throughout the survey area (pictures shown)

Large stretches of lettuce are also mixed with bulrush and covering native lilies and spatterdock (pictures shown).

With the rainy season approaching, water levels will rise and the potential for these invasive plants to impact navigation and flood control structures will increase. Native bulrush will likely be removed from sediment as hyacinth is driven to other areas which could negatively impact the ecosystem.

Water levels where plants are found remain less than 2ft in depth so mechanical harvesting is unlikely for this area.

As most of the invasive plants are within bulrush, penoxulam is a likely herbicide to use. However, studies show this takes at least 6 weeks to start showing signs of effectiveness. This being said, spraying should be of high consideration in this area so plants do not start to impede navigation during the wet season.

Google Earth

© 2018 Google





50 acres Lettuce within bulrush

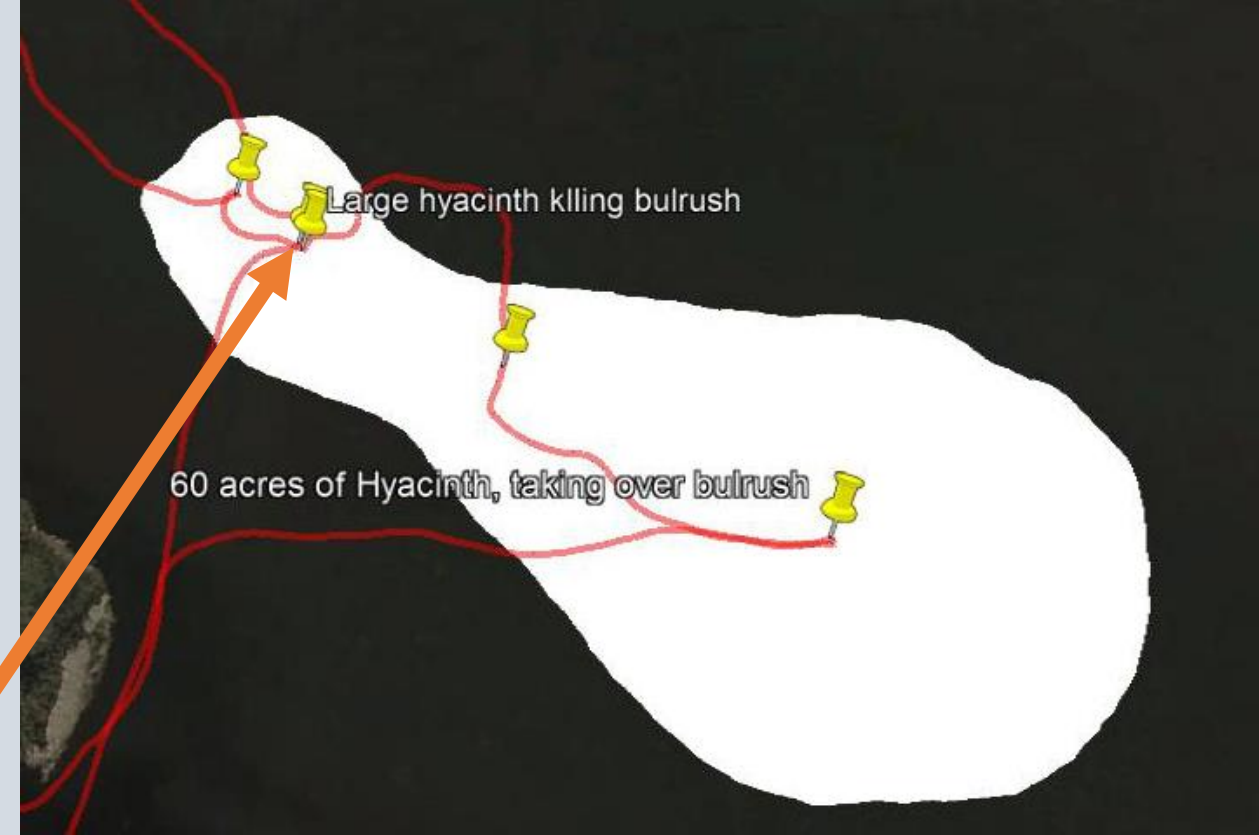


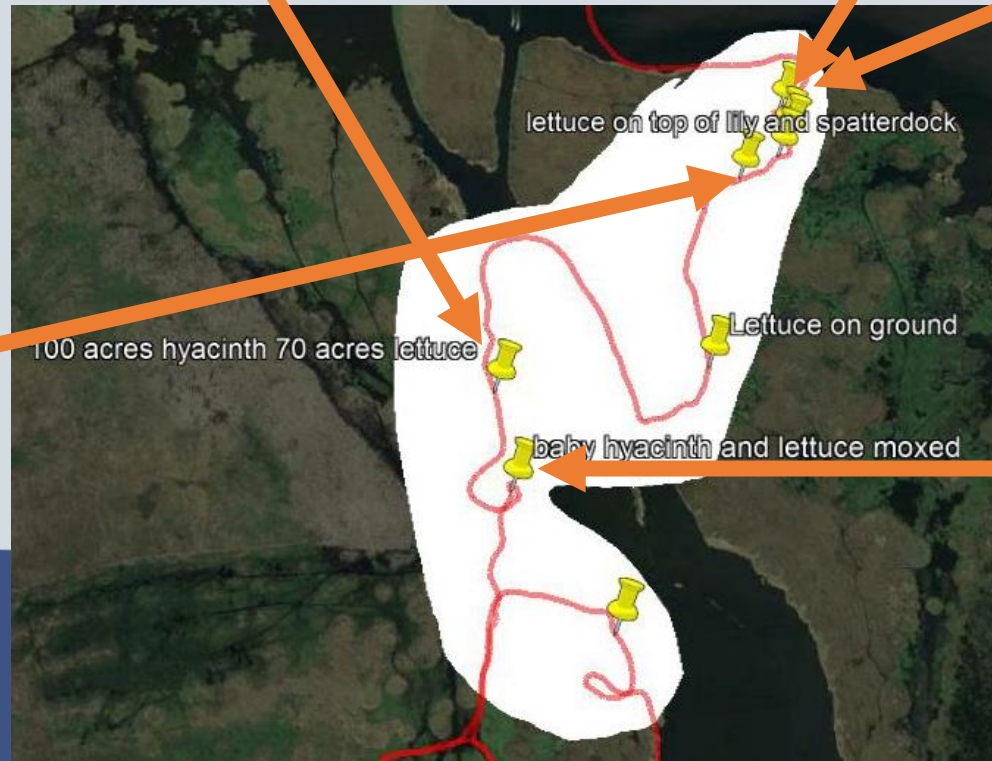


Top left: Hyacinth Pushing over bulrush. Top center: large mat of hyacinth. Bottom Right: 45 inch tall Hyacinth pulled from top left photo site



Photo point panorama photo showing the Water Hyacinth growth in the area which is severely impacting natives. Photo point will be used for post treatment assessments.









Pelican Bay

Area infested with Water
Hyacinth and Water Lettuce.

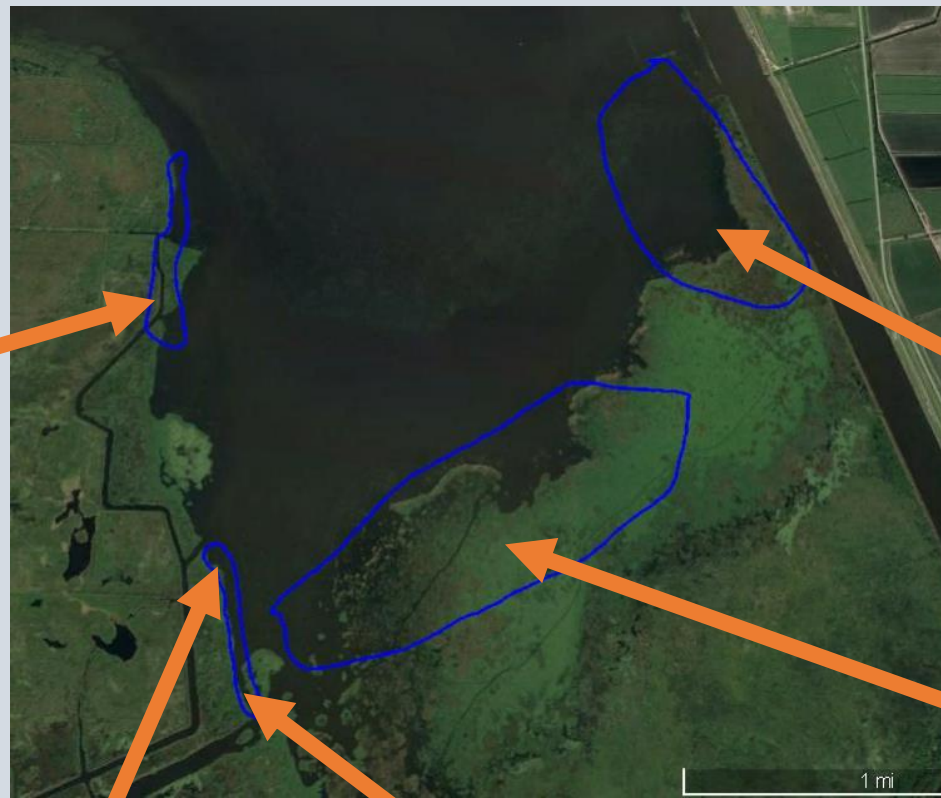
90 acres of Lettuce

200 acres of Hyacinth





Pelican Bay
Photos from 4-1-19 helicopter survey



Halifax Banks Treatment Plan

Area infested with Water
Hyacinth and Water Lettuce.

90 acres of Lettuce

120 acres of Hyacinth





Halifax Banks

Photos from 4-1-19 Helicopter survey



Water Hyacinth in Halifax Banks area

- Water Hyacinth is blooming in this area of the lake pushing out native lilies and Bladderwort and forming large mats.



Aerial Photo points: Left: 2/14/19 Middle: 4/1/19 Right: 4/17/19



Halifax Banks: Red polygon is potential mechanical harvesting site, 120+ acres of Hyacinth and 90+ acres of Lettuce.

