



Photo by Mac Stone



Snail Kite use of Lake Okeechobee

Tyler Beck

Snail Kite Conservation Coordinator

Florida Fish and Wildlife Conservation Commission



Primary Everglade Snail Kite Range





+



=





Nest Buffers

- 500 meter
 - Foraging Habitat
 - No habitat modification
- 150 meter (500 feet)
 - Nest Disturbance
 - No management activities



Lake Okeechobee
First Point

Snail Kite Nests

Legend



4/2013

Buckhead Ridge

23rd St
24th St
25th St
26th St
27th St
28th St
29th St
30th St
31st St
32nd St
33rd St
34th St
35th St
36th St
37th St
38th St
39th St
40th St
41st St
42nd St
43rd St
44th St
45th St
46th St
47th St
48th St
49th St
50th St
51st St
52nd St
53rd St
54th St
55th St
56th St
57th St
58th St
59th St
60th St
61st St
62nd St
63rd St
64th St
65th St
66th St
67th St
68th St
69th St
70th St
71st St
72nd St
73rd St
74th St
75th St
76th St
77th St
78th St
79th St
80th St
81st St
82nd St
83rd St
84th St
85th St
86th St
87th St
88th St
89th St
90th St
91st St
92nd St
93rd St
94th St
95th St
96th St
97th St
98th St
99th St
100th St

ARCI
 AVIAN
 RESEARCH and
 CONSERVATION
 INSTITUTE



© 2013 Google

Google earth

2988 ft

Imagery Date: 1/12/2011 lat: 27.1340578 lon: -80.8957319 elev: 17 ft sea alt: 12940 ft

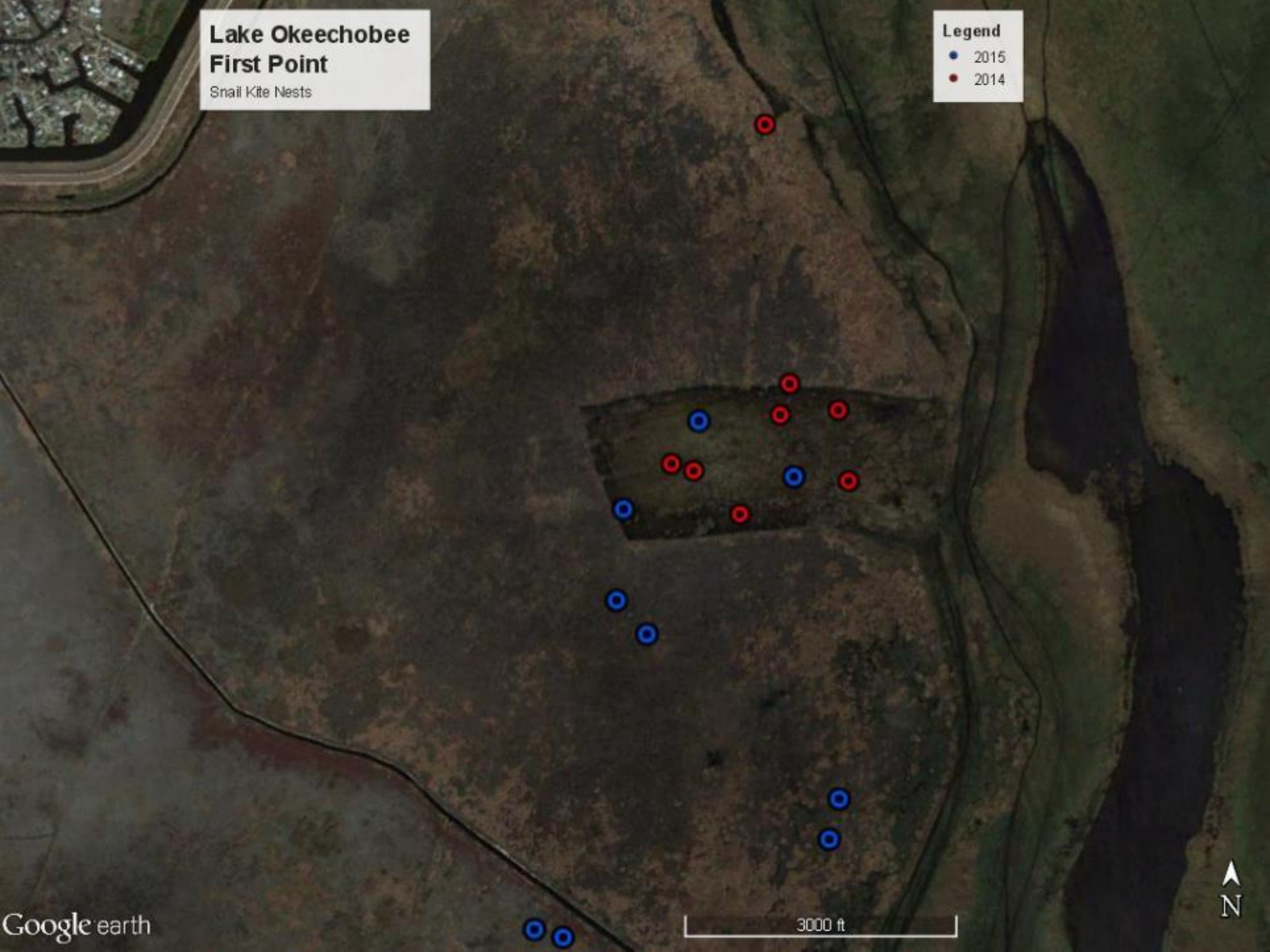


**Lake Okeechobee
First Point**

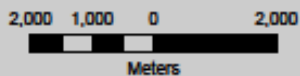
Snail Kite Nests

Legend

- 2015
- 2014



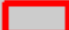
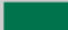


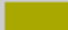
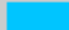








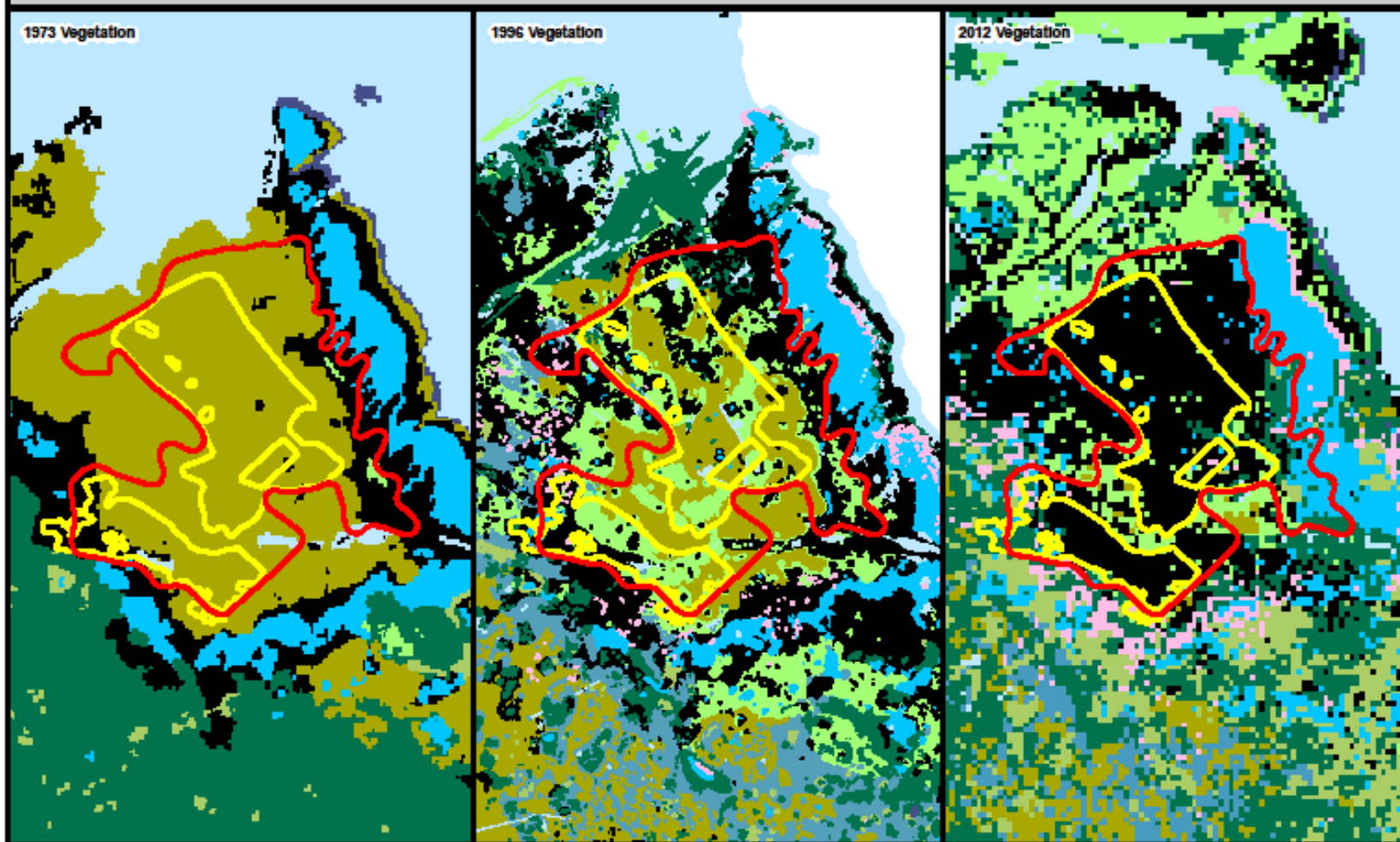


Historic Changes in Vegetation Community Distribution 2015 Management Measures Moonshine Bay, Lake Okeechobee



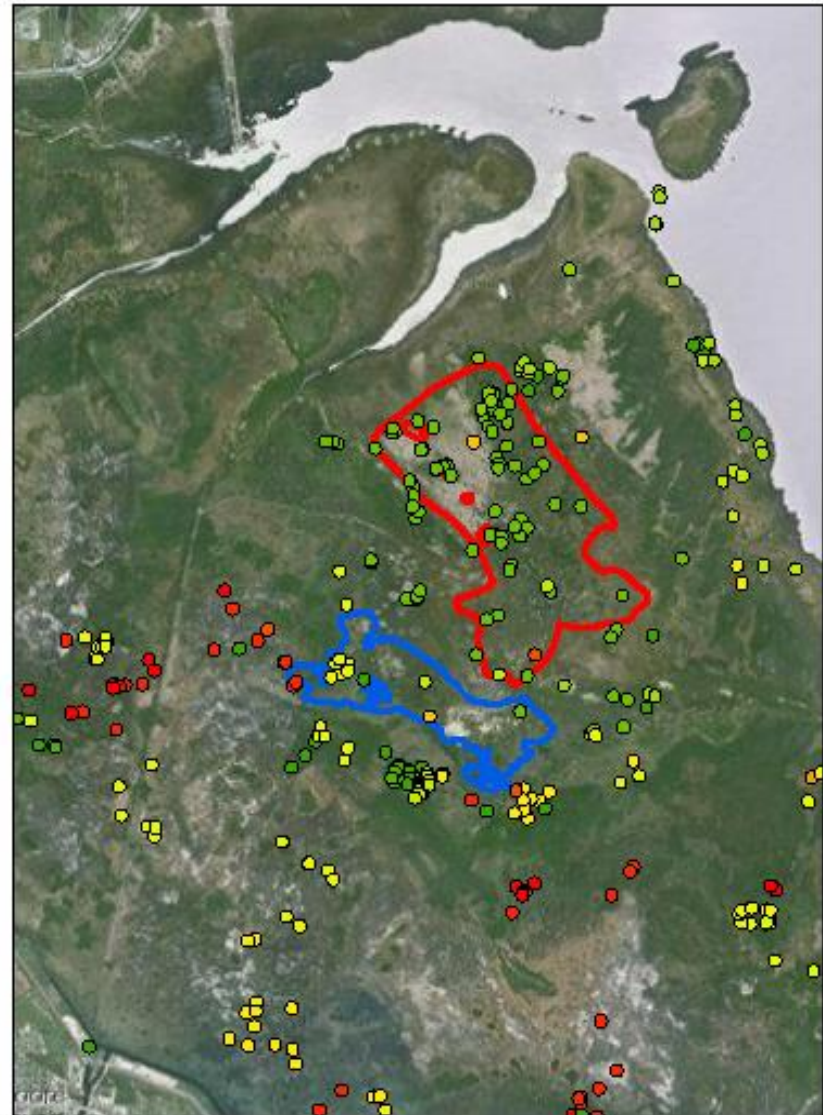
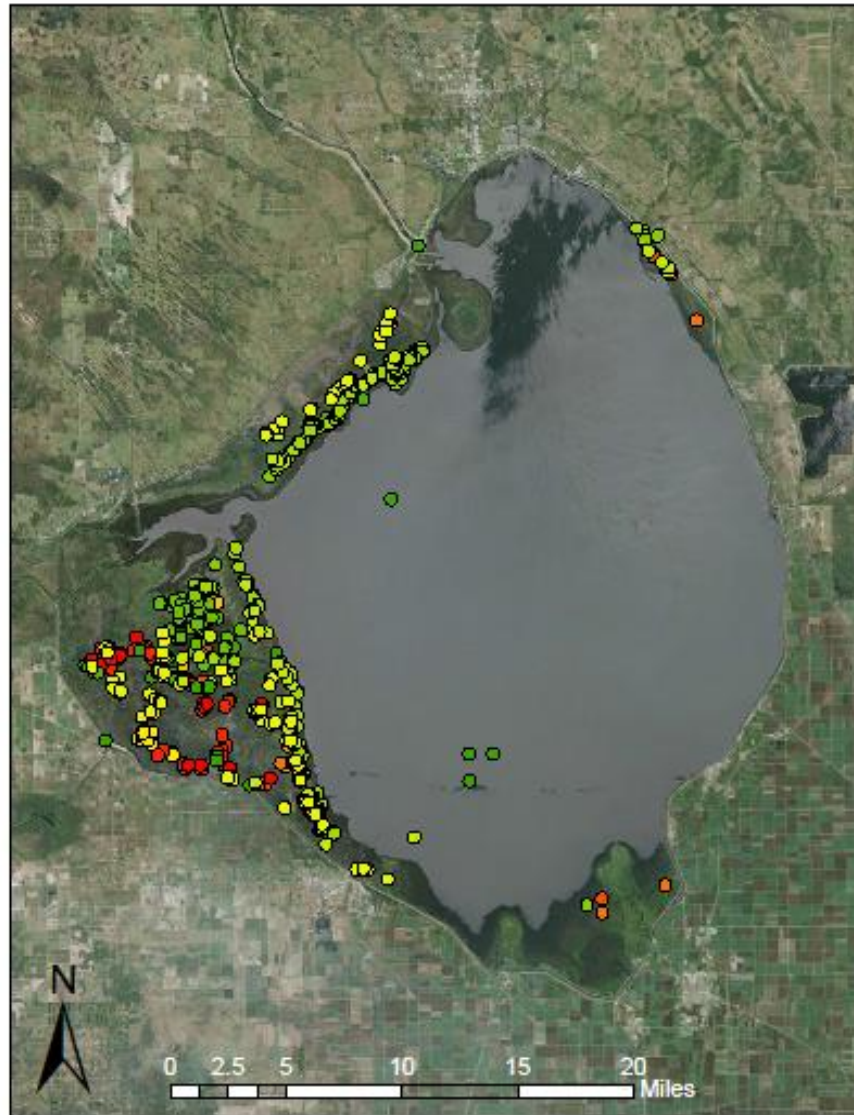
Vegetation Coverage: SPWMD
Prescribed Fire Data: FWC
Treated Cattail Data: FWC/SPWMD
Map Author: B.P. Bechelder
Date: 12 October 2018

- | | | | | | | | | | | | |
|---|---|---|---------|---|---------|---|------------|---|--------------|---|--------|
|  | November Prescribed Fire - 6,500 acres |  | Other |  | Cattail |  | Open Water |  | Spikerush |  | Willow |
|  | May Herbicide Treated Cattail - 3,200 acres |  | Bulrush |  | Lily |  | Phragmites |  | Torpedoglass |  | Woody |



Lake Okeechobee Snail Kite Nesting

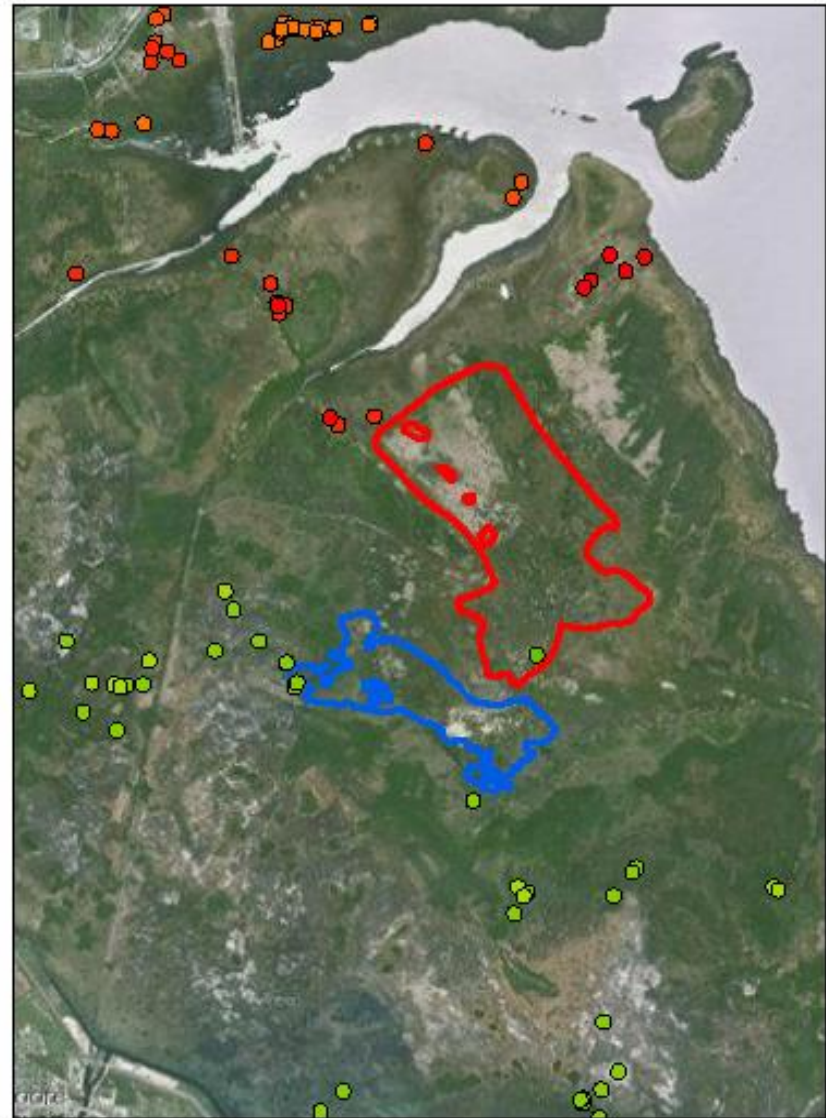
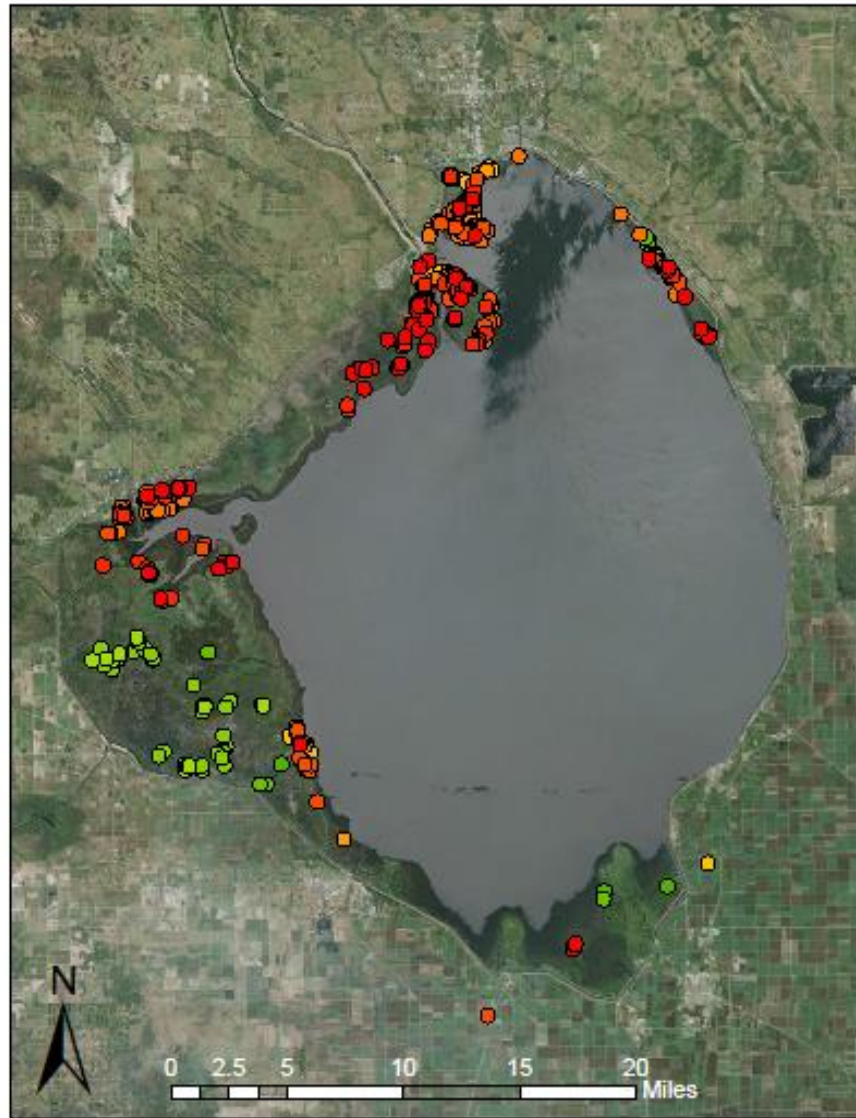
- 1987 ● 1989 ● 1991 ● 1993 ● 1997 ● 2003 ● 2005 FWC Treatment SFWMD Treatment
● 1988 ● 1990 ● 1992 ● 1996 ● 1998 ● 2004 ● 2006



Lake Okeechobee Snail Kite Nesting

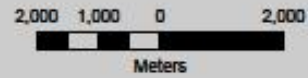
 FWC Treatment  SFWMD Treatment

- 2002 2004 2006 2008 2010 2012 2014
- 2003 2005 2007 2009 2011 2013 2015



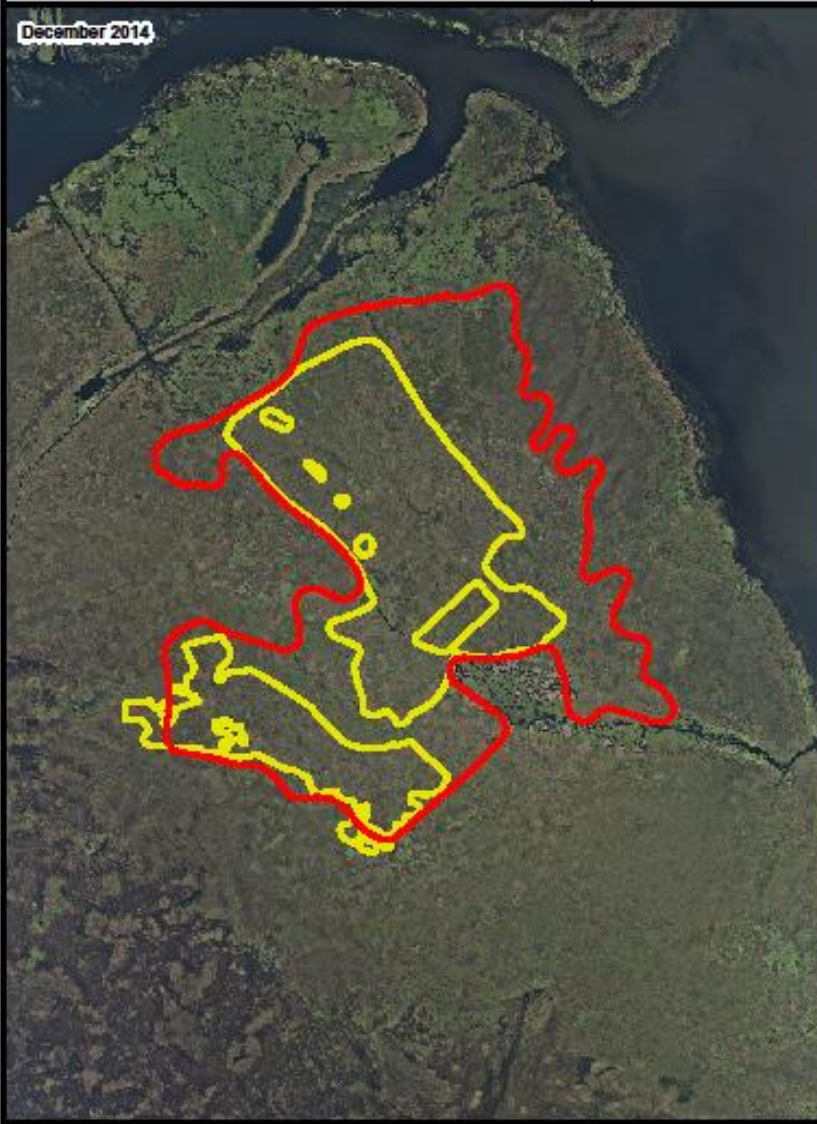
2015 Vegetation Management Activities Moonshine Bay, Lake Okeechobee

- November Prescribed Fire - 6,500 acres
- May Herbicide Treated Cattail - 3,200 acres

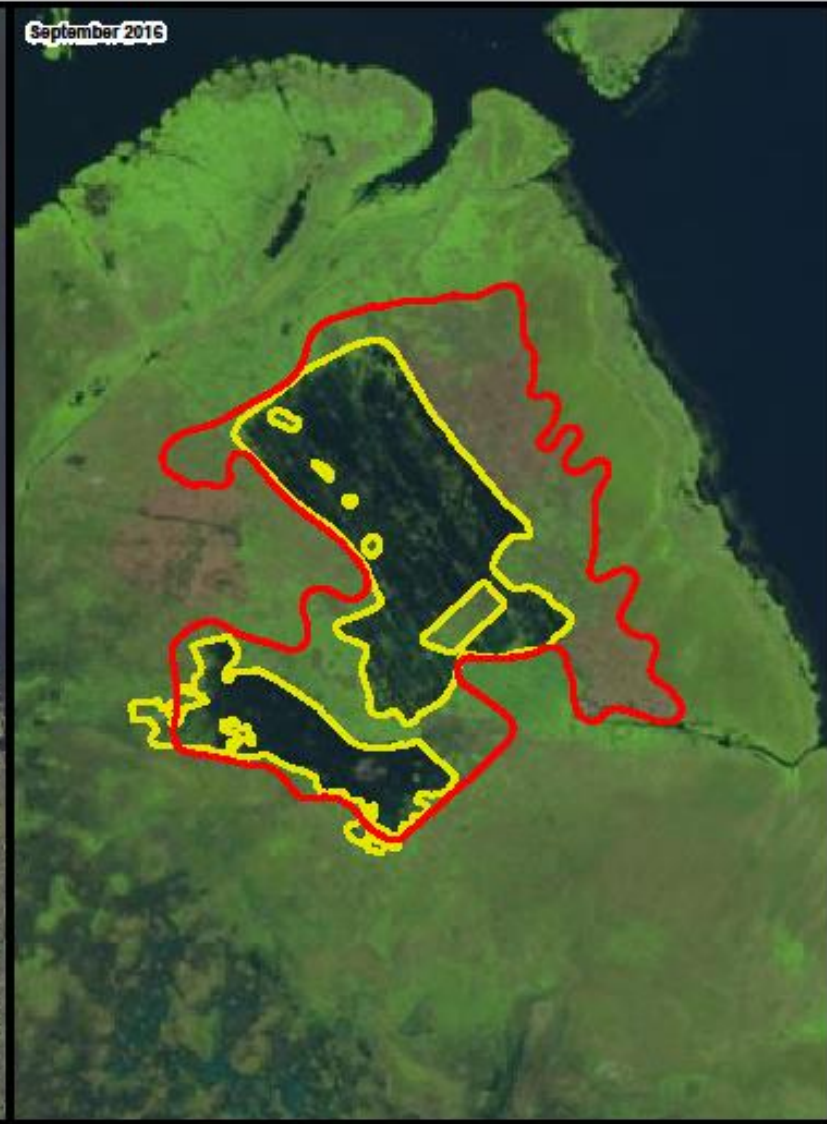


December 2014 Imagery: LABINS
September 2016 Imagery: USGS
Prescribed Fire Data: FWC
Treated Cattail Data: FWC/SPWMD
Map Author: B.P. Bachelder
Date: 12 October 2016

December 2014



September 2016



2016 Snail Kite Nesting

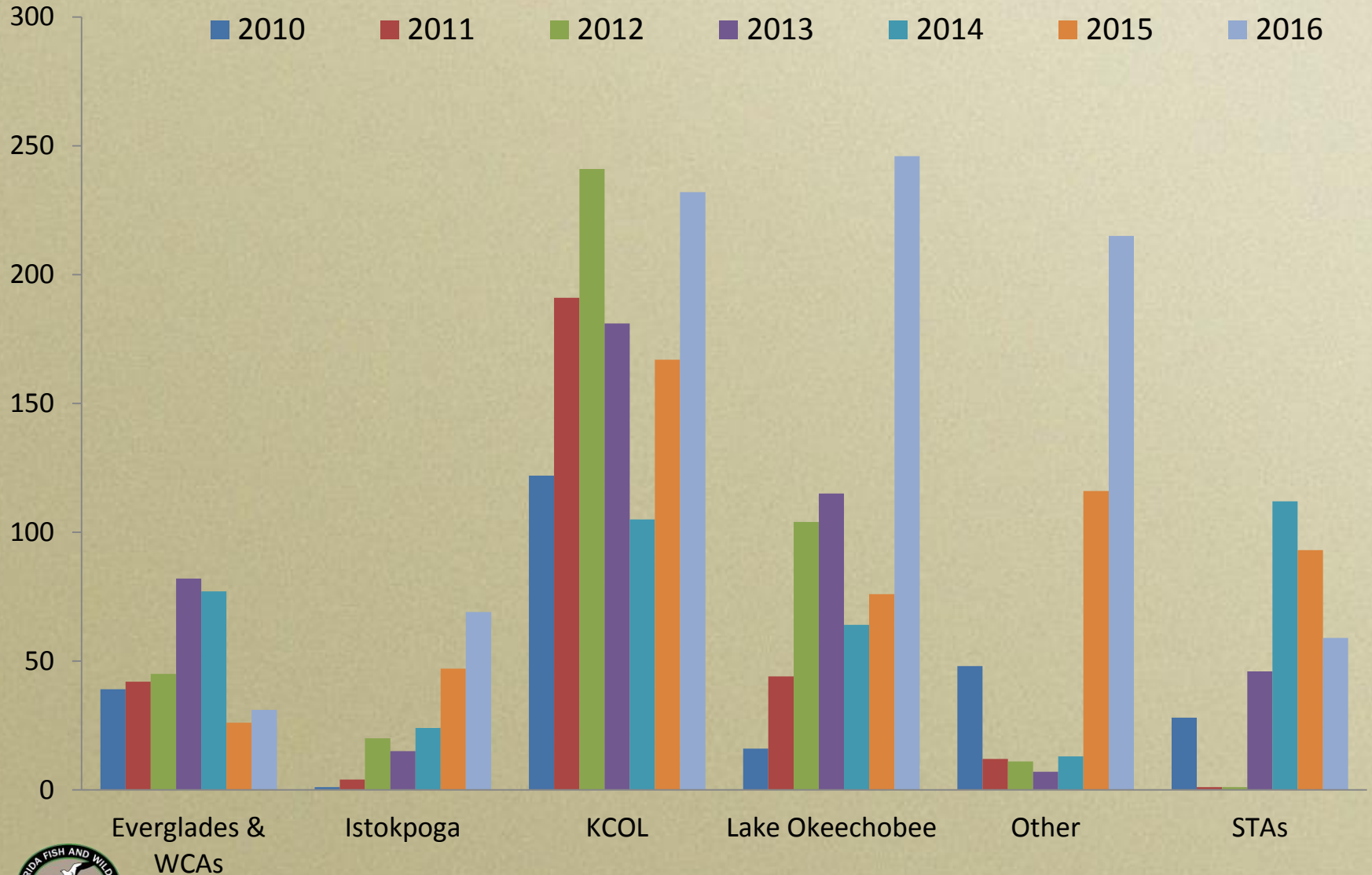
Moonshine Bay Area

Legend

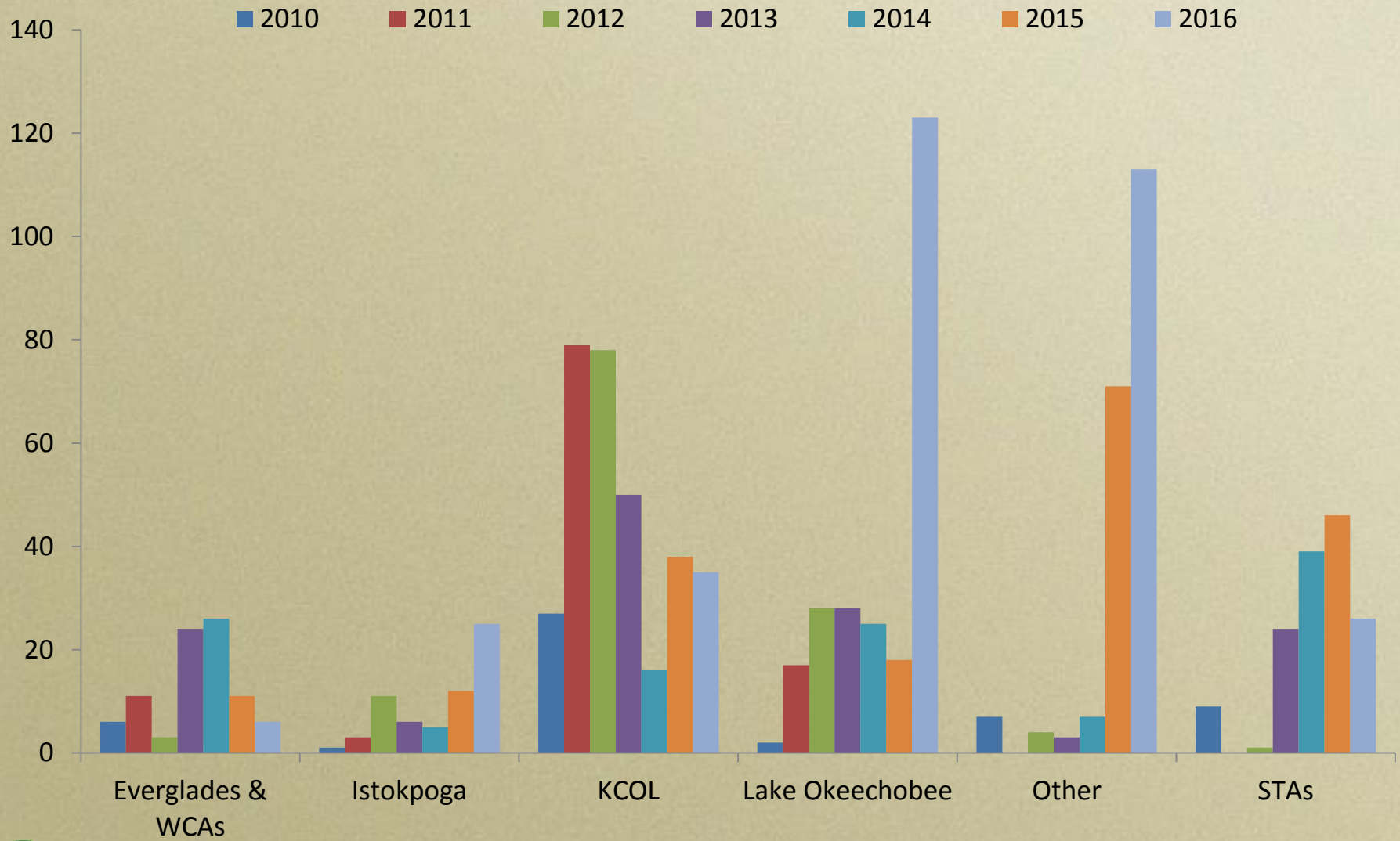
- Failed
- Successful

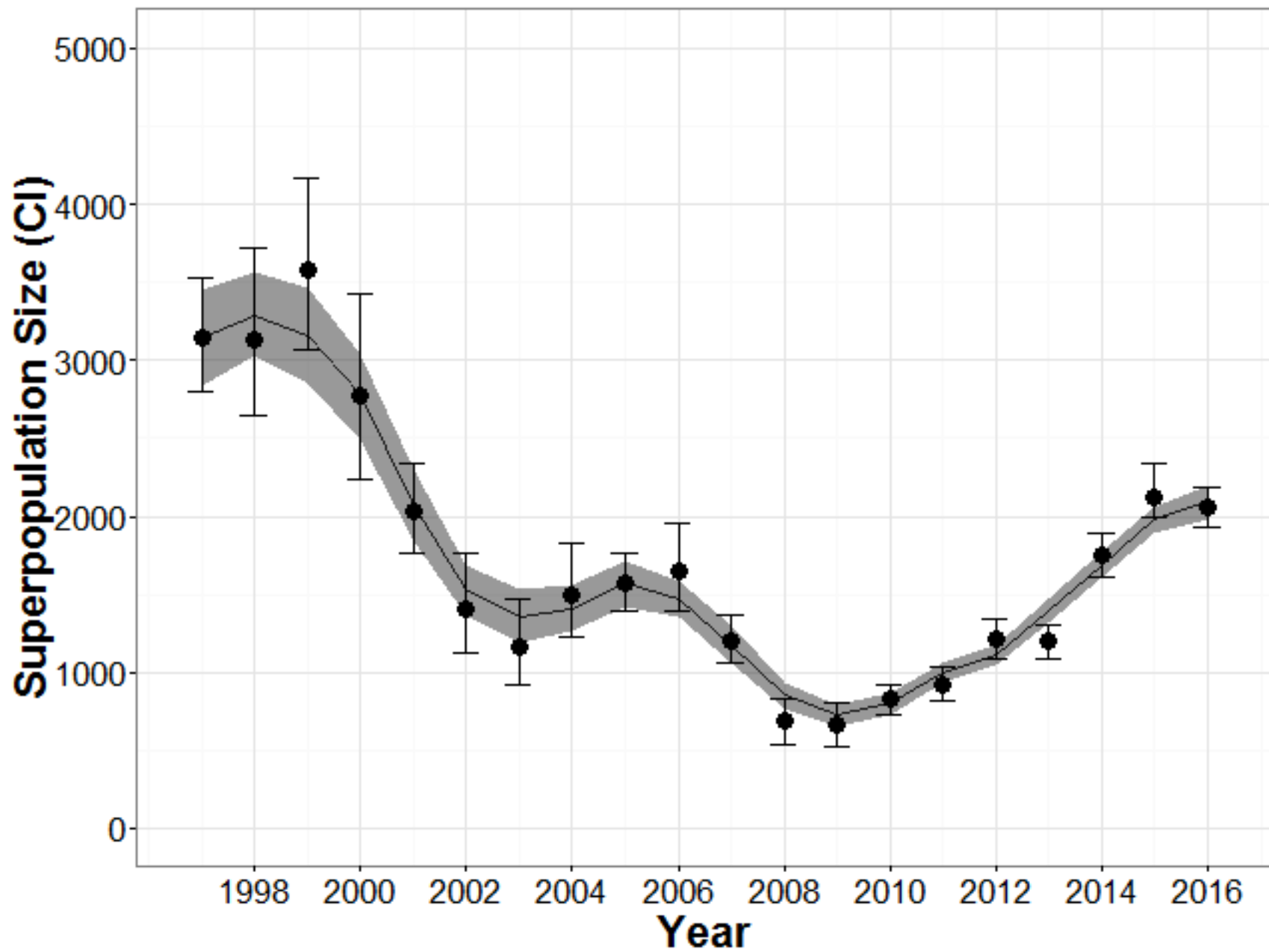


Total Snail Kite Nests Statewide



Successful Snail Kite Nests Statewide





Questions?

